

[modded]: V235_R3512_G_0A.30.6CR + ELF's, Motorola V235 custom firmware by Indepth6 & EXL

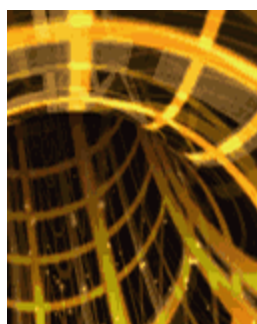
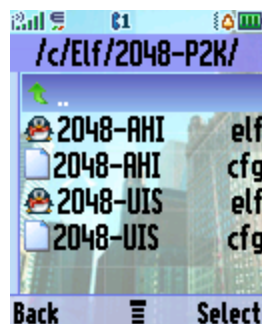
[Поделиться ▼](#)
[Опции ▼](#)
EXL

 Вчера, 18:46 **Закрепленное сообщение!**

 IP: *Скрыт* || Сообщение № #1|

 Rock The Microphone
 M M M M M M M M

 Группа: Администраторы
 Сообщений: 2 851
 Регистрация: 12.5.2007
 Из: г. Новосибирск
 Пользователь №: 134 652

 Рейтинг: 4593


The firmware is prepared for phones of the R3512 platform: the only representative of which is Motorola V235 with 128x160 cSTN display and 8 MiB RAM.


 S/W: **R3512_G_0A.30.6CR**
 Flex: **SE4668AXXK70AB**

Installation:

01. Charge the battery.
02. Enter Boot Loader mode by simultaneously pressing *****, **#**, **Red key** when the phone is turned off.
03. Install Motorola USB Driver v3.7.0: [32-bit](#) | [64-bit](#).
04. Connect the phone to the PC.
05. Flash the SBF firmware file using [RSD Lite 3.8](#), you can flash it from under a virtual machine, see for more details the topic: [Virtual machine images for Motorola, WinXP and Win2K phones for VirtualBox and VMware Player](#).

Changes:

01. CG1, CG7, CG18: RSA bypassed.
02. CG1: Changed Boot Screen.
03. CG1: All ELF patches have been added.
04. CG2, CG4: MotoMixer menu item was activated and renamed to ELF's.
05. CG2: FEM activated.
06. CG2: JAL activated.
07. CG2: ***#9999#**
08. CG2: Opcode Hand-Test-Command (Menu + 048263*) activated.
09. CG4: All relevant Eastern/Central European languages have been added.
10. CG2: Menu cursor in the center.
11. CG2: Added ELF's.
12. CG15: Timings in DRM/CG15 have been reduced.
13. CG2: Added various stock content.
14. CG1: Added the ability to remove SIM-Lock.

List of Patches:**Код**

```
1_Bootlogo_6CR.fpa
2_Elfpack_6CR.fpa
3_Elfpack_Register_6CR.fpa
4_Elfpack_Elf_Directory_6CR.fpa
5_Unlock_PDS_SIM-Lock_SEEMs_6CR.fpa
```

List of ELF's:**Код**

```
2048-P2K
BadApple
Benchmark
Dumper
ElfBox
FBrowser
FireEffect
MotoCMD
Neko
Overclock
Perlin
Screenshot
Spout
VibroHaptic
```

Yeti3D

Yeti3D-Old

A description of ELF's can be found in the [ELF's by EXL: Nostalgia of development for Motorola P2K](#).

Attention! Some ELF applications require a running and minimized any Java application.

Task List:

01. CG1: Increase volume in **gain_table.bin** and **param_table.bin** files, fix attributes.
02. CG4: Fix cyrillic bold font in the Web browser.
03. CG4: Fix ID3 tags in MP3 encoded Win-1251.
04. CG1: Redistribute System Heap, giving more RAM to ELF's.
05. CG1: Port ElfPack v2.0.

Thanks:

01. **Indepth6**: for work on CG4 (LangPack) and in-depth testing of firmware and ELF's on his V235.
02. [Andy51](#): for ElfPack v1.0 and PortKit!
03. [om2804](#): for MotoCMD!

Mirrors:

01. https://firmware.center/projects/EXL/V235_R...09-Mar-2024.zip