

Service Repair Documentation

Level 2.5 – SF65



Release	Date	Department	Notes to change
1.0		COM MD CC GRM T	New document

Introduction

This Service Repair Documentation is intended to carry out repairs on Siemens repair level 2.5. The described failures shall be repaired in Siemens authorized local workshops only.

All repairs have to be carried out in an ESD protected environment and with ESD protected equipment/tools. For all activities the international ESD regulations have to be considered.

Assembling/disassembling has to be done according to the latest SF65 Level 2 repair documentation. It has to be ensured that every repaired mobile Phone is checked according to the latest released General Test Instruction document (both documents are available in the Technical Support section of the C-market).

Check at least weekly C-market for updates and consider all SF65 related Customer Care Information

If you have any questions regarding the repair procedures or technical questions spare not hesitate to contact our technical support team in Kamp-Lintfort, Germany:

Tel.: +49 2842 95 4666
Fax: +49 2842 95 4302
e-mail: st-support@klf.siemens.de

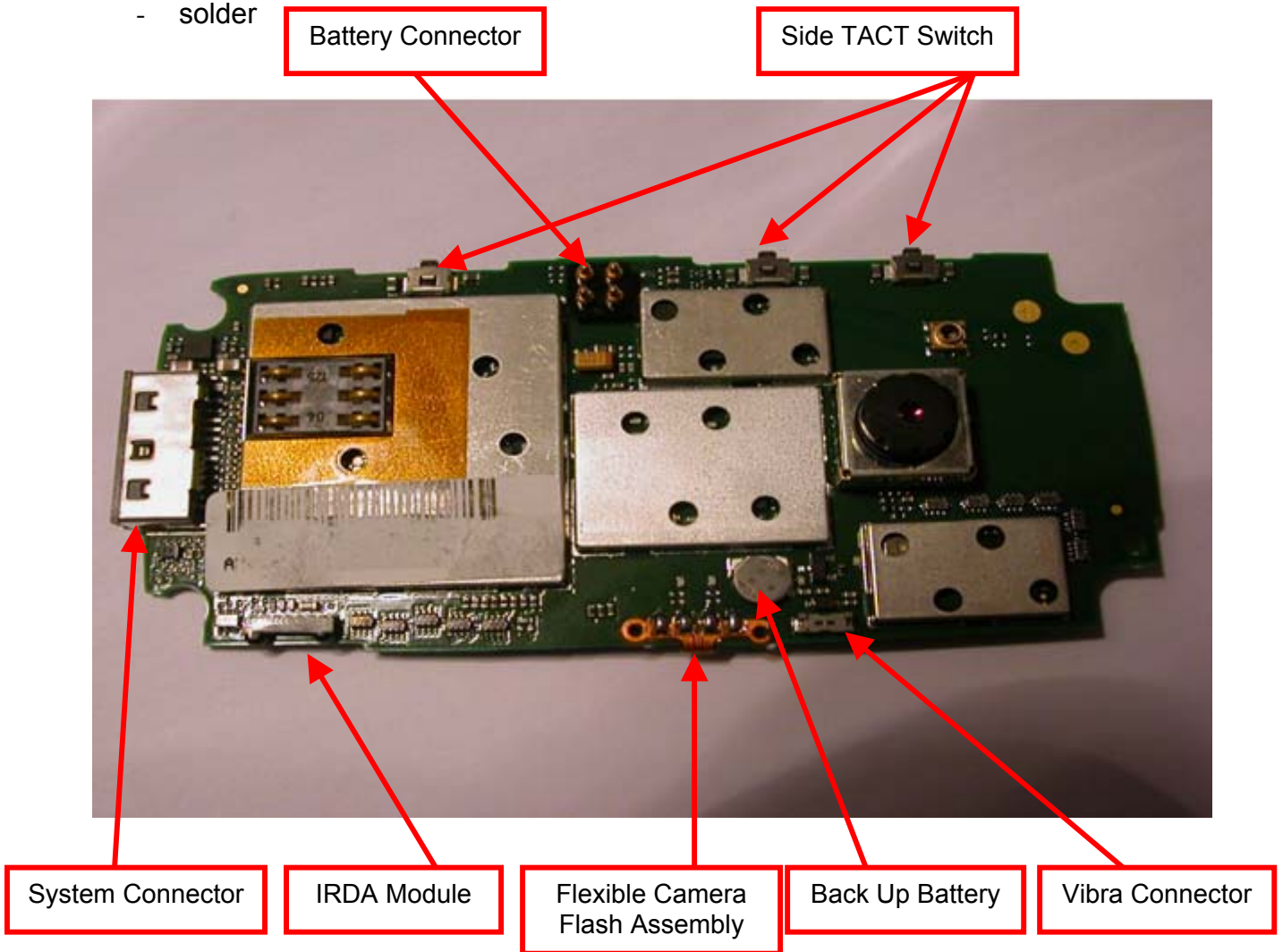
Table Of Content

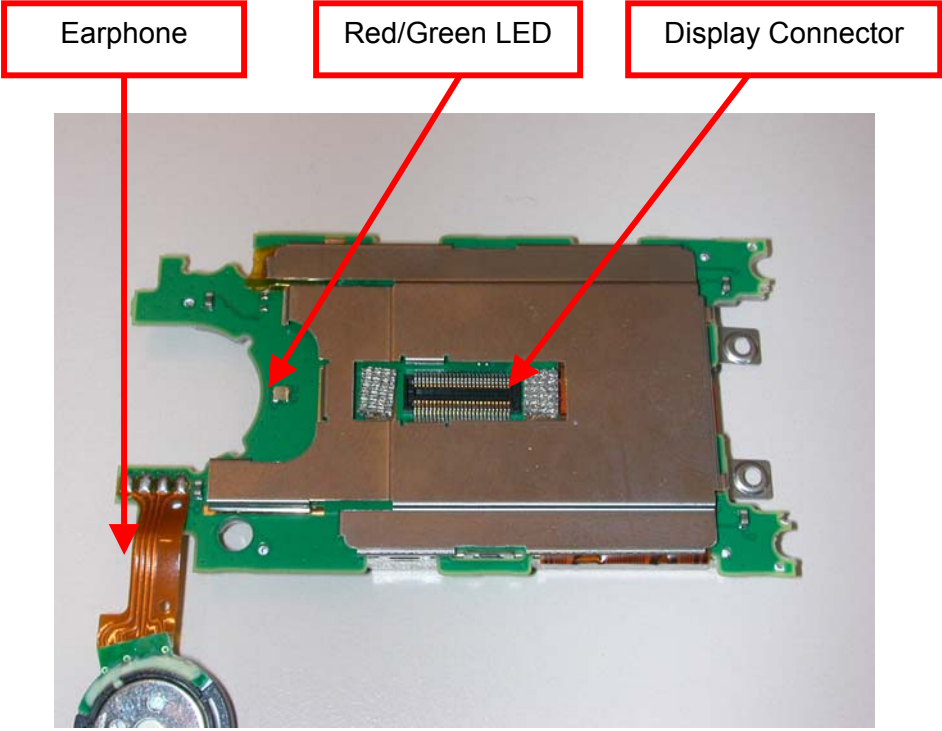
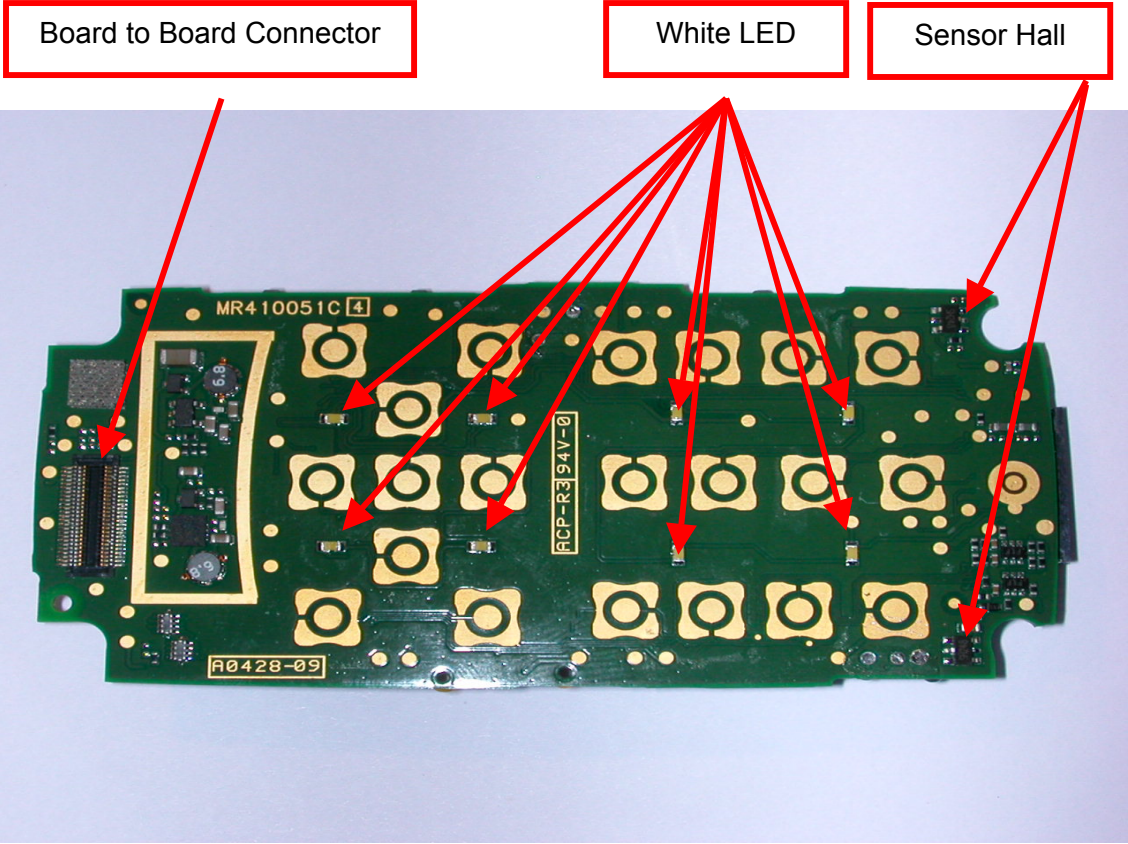
- 1. SF65 Board Layout4
- 2. System Connector6
- 3. Display Connector – Board to Board Connector7
- 4. Battery Connector8
- 5. White & Red/Green LED9
- 6. IRDA Communication Module 10
- 7. Back Up Battery 11
- 8. Side TACT Switch 12
- 9. Sensor Hall 13
- 10. Vibra Connector 14
- 11. Earphone 15
- 12. Flexible Camera Flash Assembly 16

1. SF65 Board Layout

Jigs, Tools and Working materials for all described repairs:

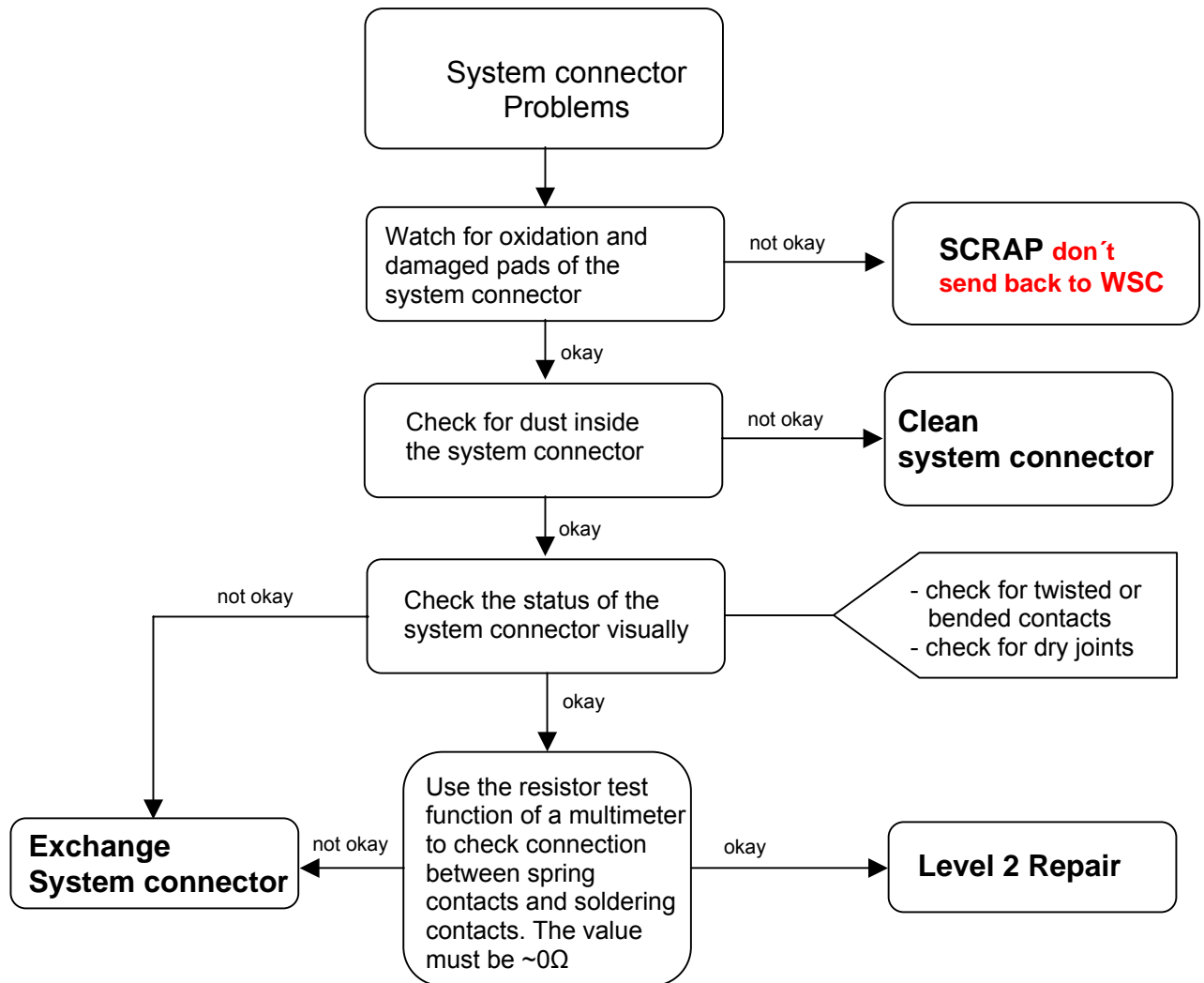
- hot air blower
- soldering gun
- tweezers
- flux
- solder





2. System Connector

Fault Symptoms	
Customer: Charging Problems Problems with external loudspeaker or microphone when using a car kit Problems with accessories connected at the system connector	GRT: No connection to GRT Tbd.



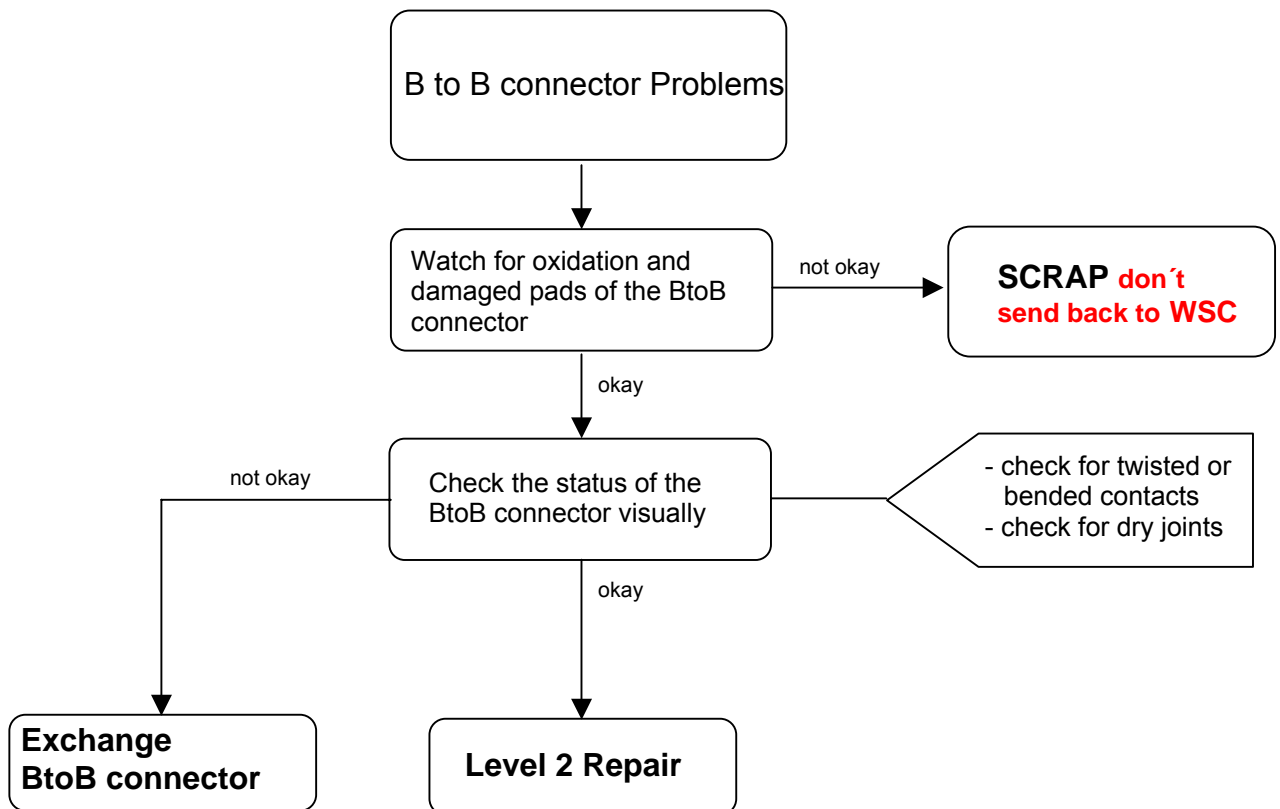
System Connector

Use soldering iron to remove defective component. Avoid excessive heat! Watch surrounding components! Resolder new component afterwards.

E-commerce order number: L50634-Z97-C64
Soldering temperature: 240 - 255°C
IRIS Diagnose Code: 46100 Interface/Charging Connector/Mechanical Damage
47300 Interface/Data Interface/Mechanical Damage
4B100 Interface/Headset Connector/Mechanical Damage

3. Display Connector – Board to Board Connector

Fault Symptoms	
Customer: Display problems, like missing lines or columns on the LCD or display contrast problems or illumination problems	GRT: Display problems



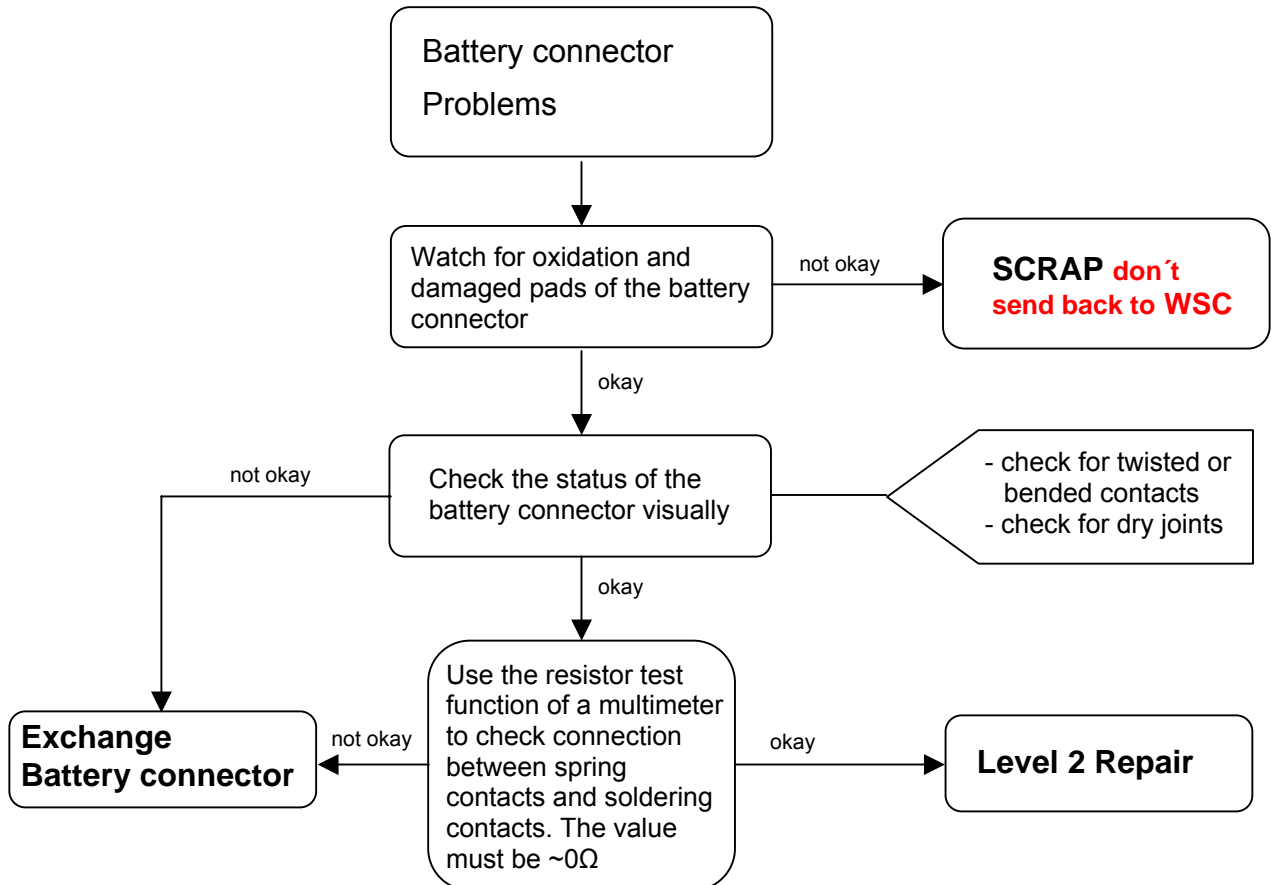
Display Connector - Board to Board Connector

Use soldering iron to remove defective component. Avoid excessive heat! Watch surrounding components! Resolder new component afterwards.

E-commerce order number: L50634-Z97-C58
 Soldering temperature: 240 - 255°C
 IRIS Diagnose Code: 2A100 Display/Performance
 2A100 Display/Background Illumination
 72110 Acoustics/Receiving/Earcap/No Function
 72170 Acoustics/Receiving/Earcap/Low Voice Level

4. Battery Connector

Fault Symptoms	
Customer: Mobile does not switch on	GRT: No connection to GRT



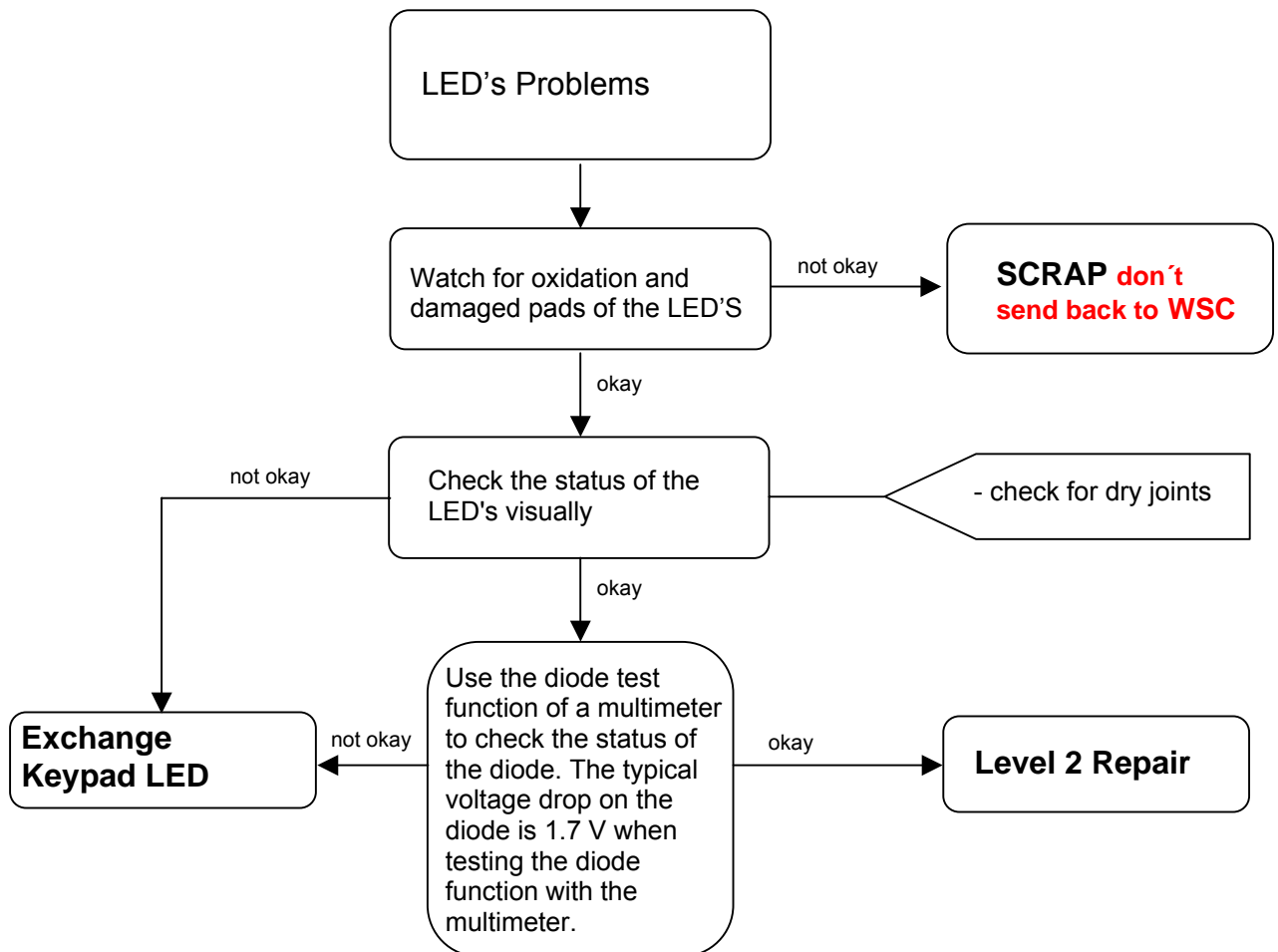
Connector BATTERY

Use soldering iron to remove defective component. Avoid excessive heat! Watch surrounding components! Resolder new component afterwards.

E-commerce order number: L50634-Z97-C59
Soldering temperature: 240 - 255°C
IRIS Diagnose Code: 13000 Battery/Mechanical Damage

5. White & Red/Green LED

Fault Symptoms	
Customer: Keypad illumination does not work	GRT: Tbd.



White LED

Use soldering iron to remove defective component. Avoid excessive heat! Watch surrounding components! Resolder new component afterwards. **Attention: Remove Metal Dome Sheet before!!!**

E-commerce order number: L50640-Z97-C64
Soldering temperature: 240 - 255°C
IRIS Diagnose Code: 36000 Keys/Illumination

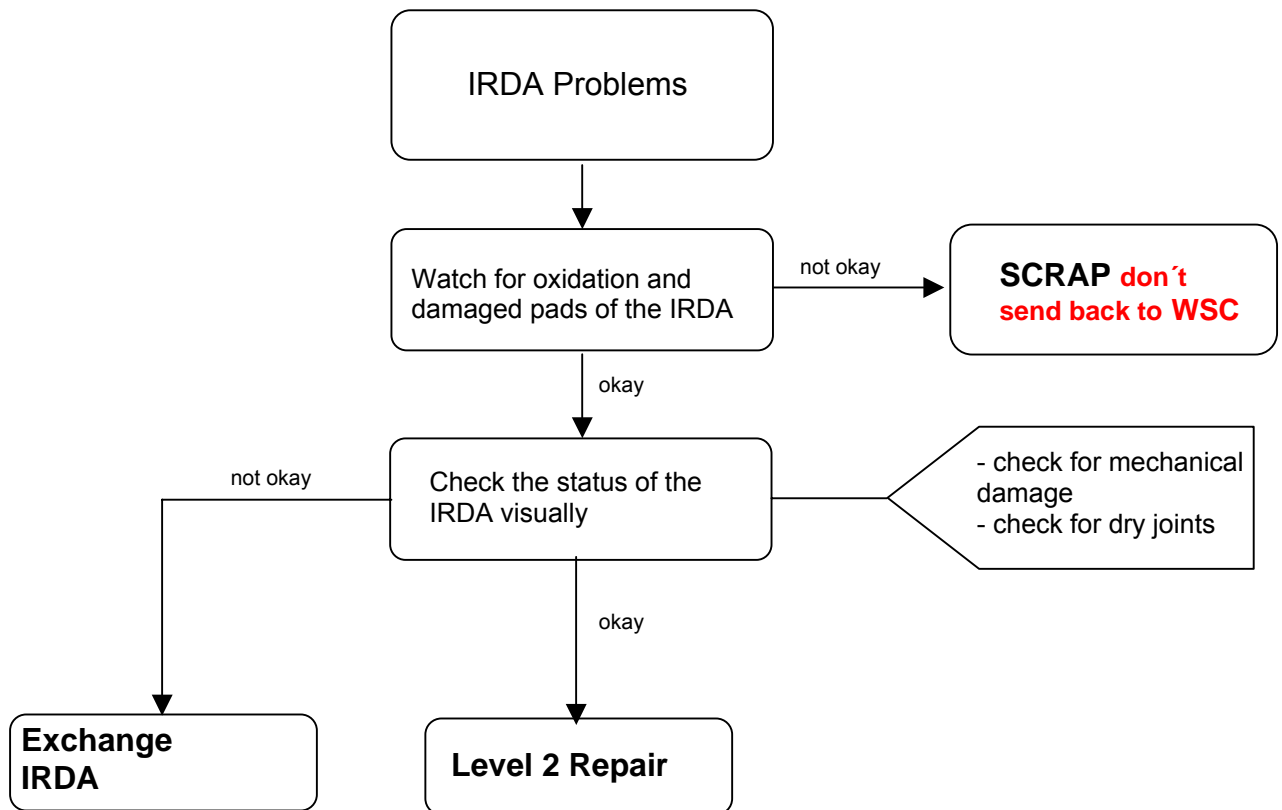
LED Red/Green

Use soldering iron to remove defective component. Avoid excessive heat! Watch surrounding components! Resolder new component afterwards.

E-commerce order number:
Soldering temperature: 240 - 255°C

6. IRDA Communication Module

Fault Symptoms	
Customer: No infrared connection possible	GRT: Tbd.



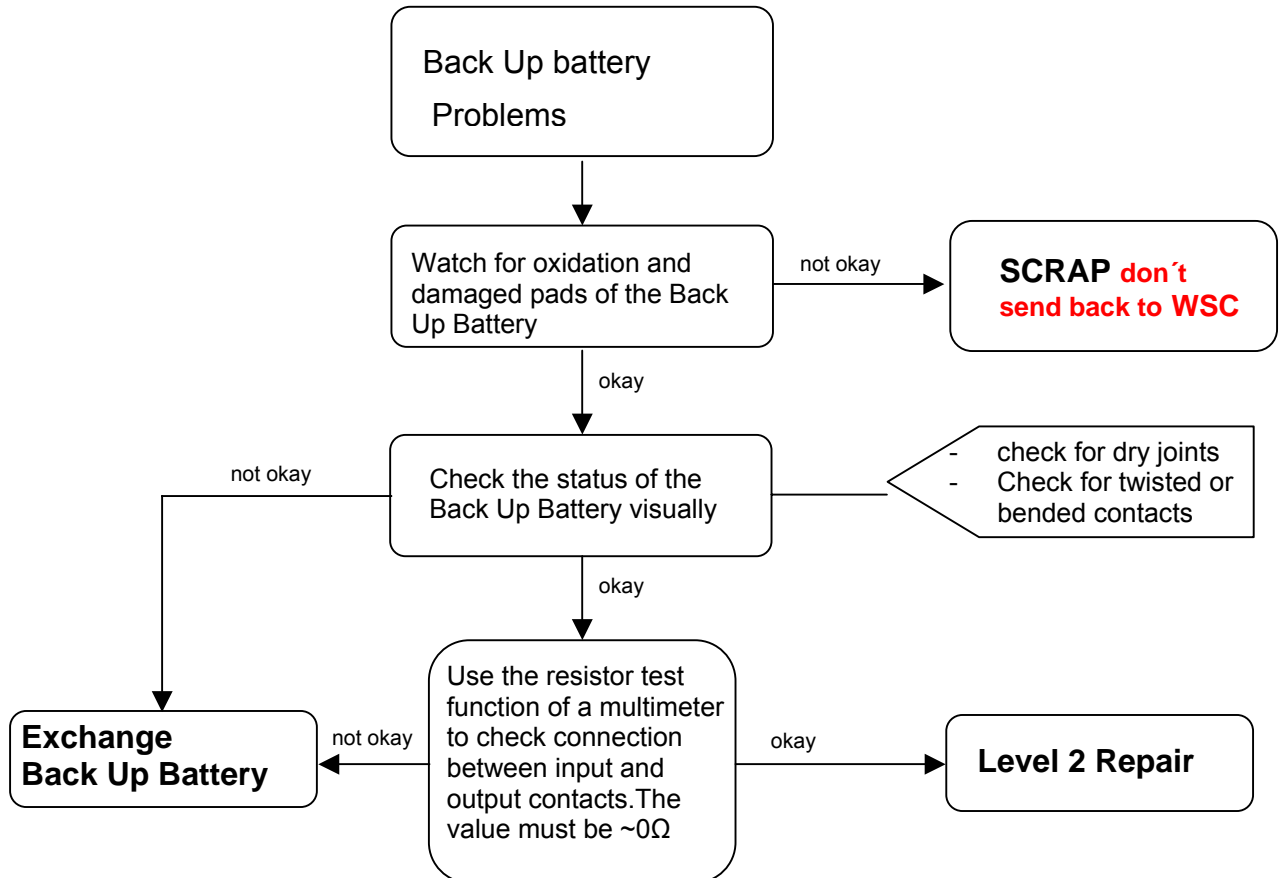
IRDA

Use soldering iron to remove defective component. Avoid excessive heat! Watch surrounding components! Resolder new component afterwards.

E-commerce order number: L50610-U6189-D670
 Soldering temperature: 240 - 255°C
 IRIS Diagnose Code: 41100 Interfaces / IRDA / No Function
 41300 Interfaces / IRDA / Mechanical Damage

7. Back Up Battery

Fault Symptoms	
Customer: Customer parameter (date and time) are not saved when battery is removed	GRT: Tbd.



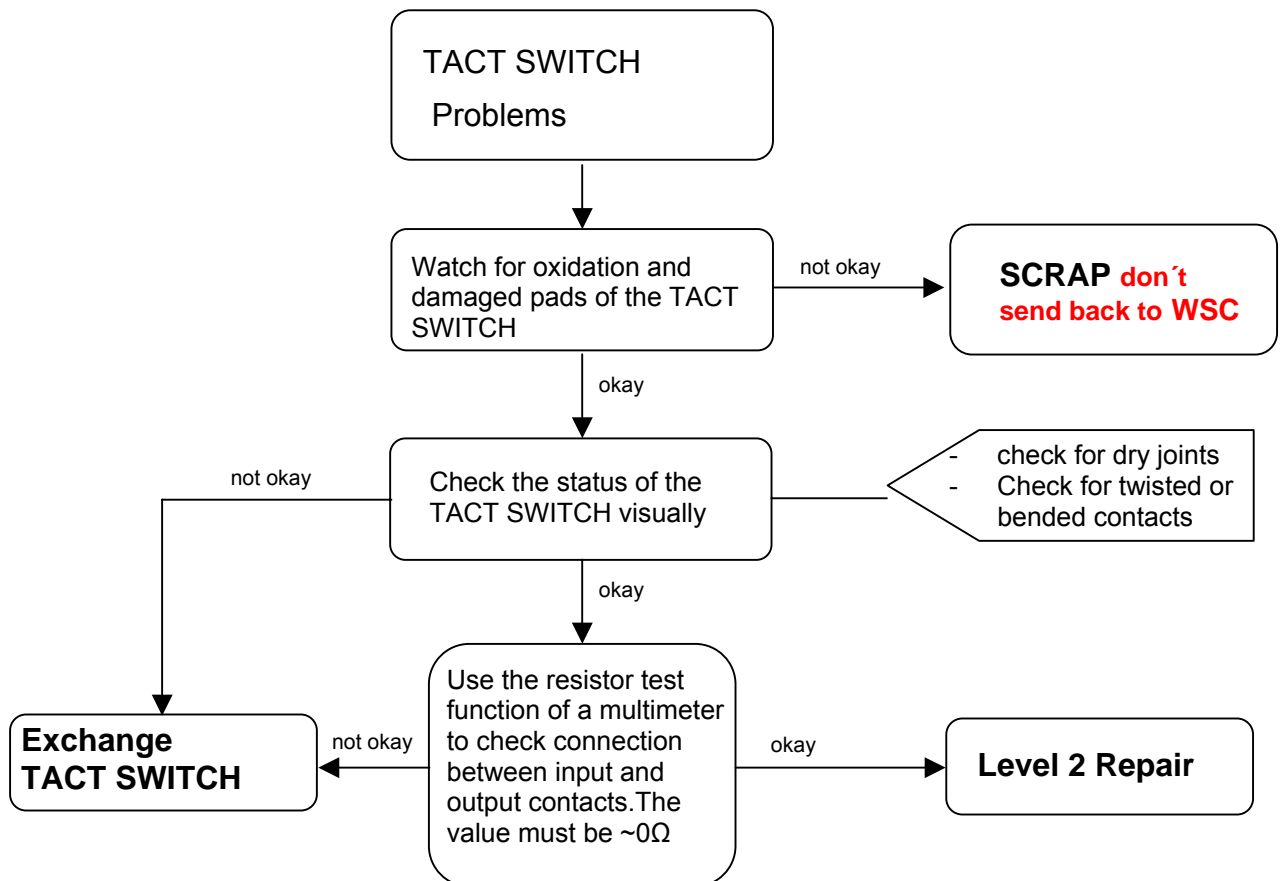
Back Up Battery

Use soldering iron to remove defective component. Avoid excessive heat! Watch surrounding components! Resolder new component afterwards.

E-commerce order number: L50628-F2705-Z1
 Soldering temperature: 240 - 255°C
 IRIS Diagnose Code: 16000 : Battery / Backup Battery Performance

8. Side TACT Switch

Fault Symptoms	
Customer: Can not take picture, volume/flash does not work	GRT: Tbd.



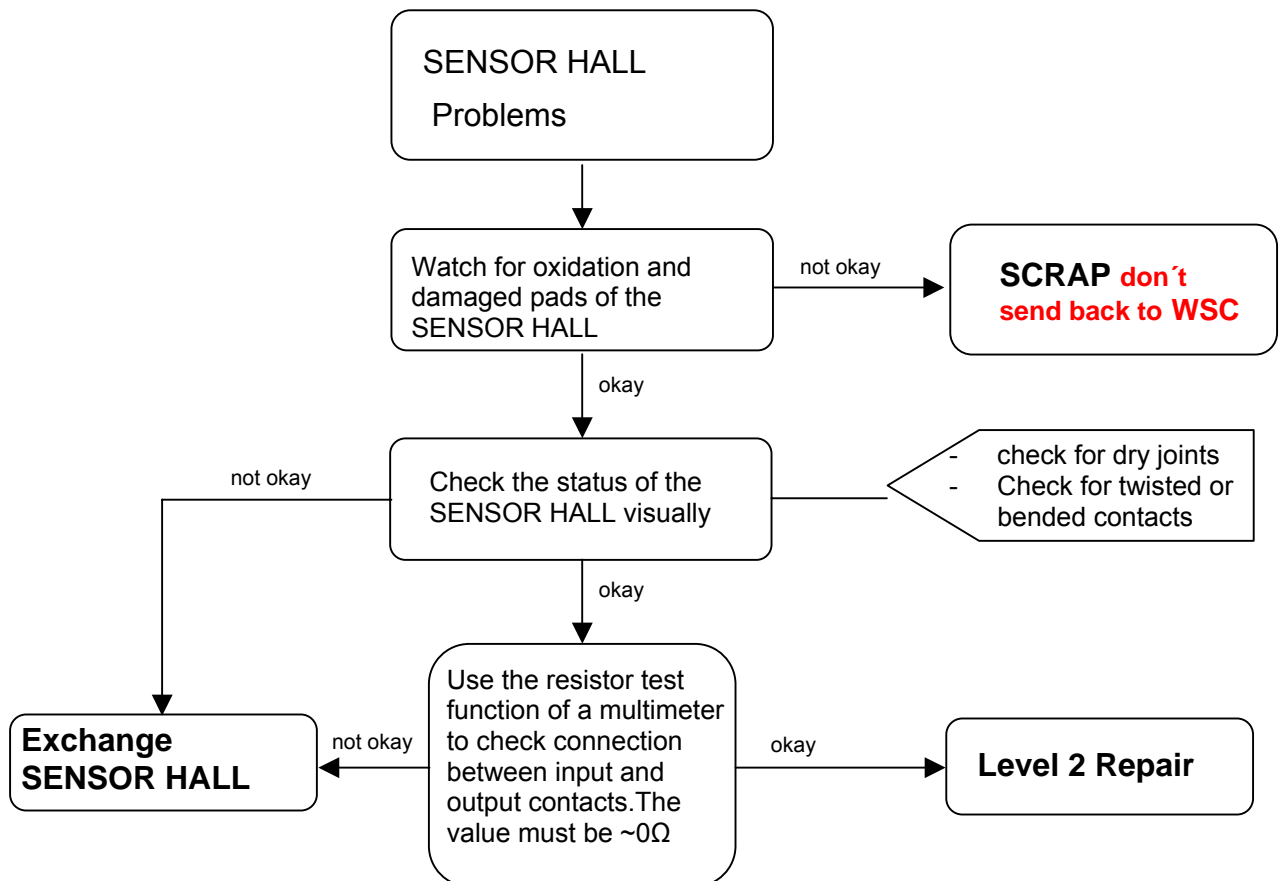
SIDE TACT SWITCH

Use soldering iron to remove defective component. Avoid excessive heat! Watch surrounding components! Resolder new component afterwards.

E-commerce order number: L50615-Z77-C257
Soldering temperature: 240 - 255°C
IRIS Diagnose Code: 34100 Keys / Side / No Function
34200 Keys / Side / Reduced Functionality
34300 Keys / Side / Mechanical Damage

9. Sensor Hall

Fault Symptoms	
Customer: Clamshell detection does not work (camera mode/LCD does not start)	GRT: Tbd.



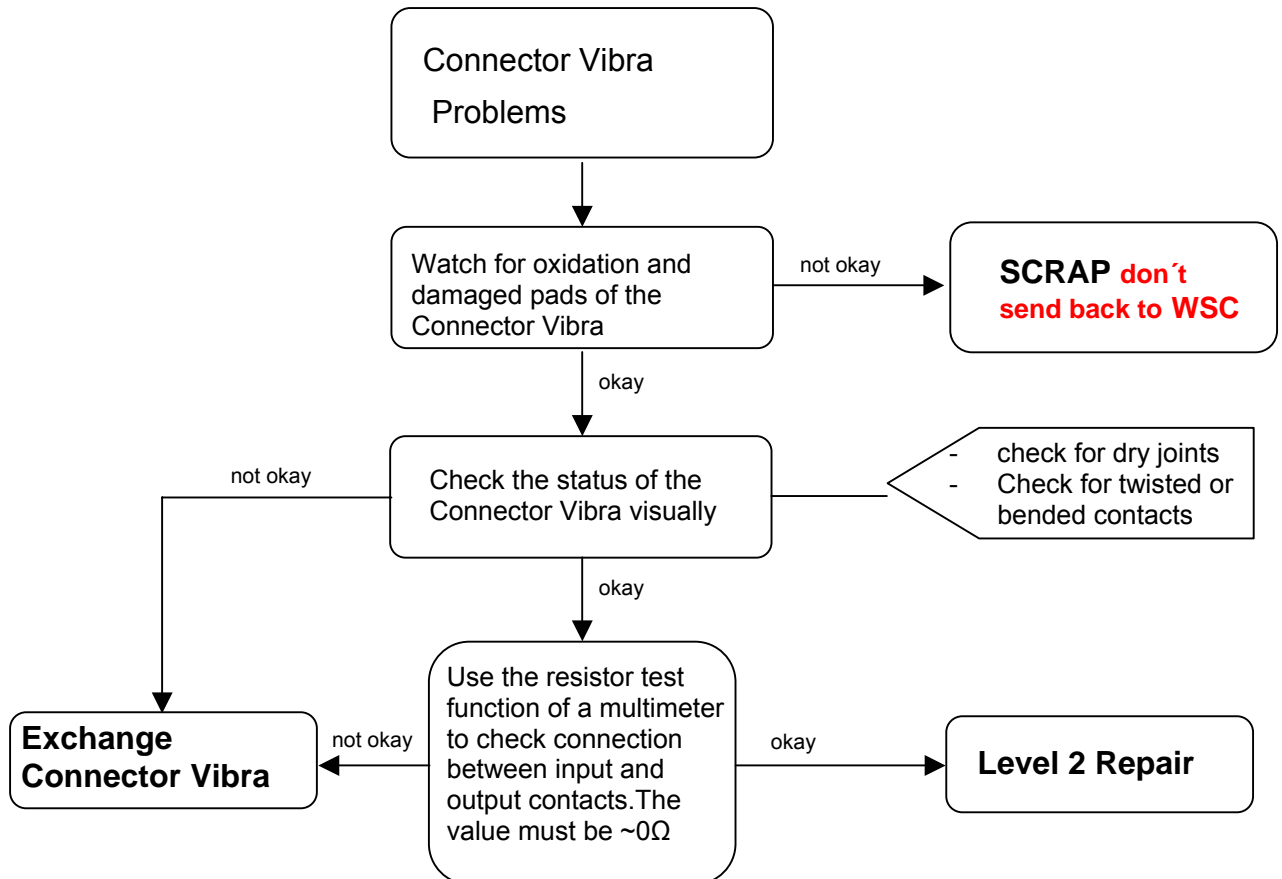
SENSOR HALL

Use soldering iron to remove defective component. Avoid excessive heat! Watch surrounding components! Resolder new component afterwards.

E-commerce order number: L50610-U6190-D670
 Soldering temperature: 240 - 255°C
 IRIS Diagnose Code: 00000 : Miscellaneous

10. Vibra Connector

Fault Symptoms	
Customer: Vibra does not work	GRT: Tbd.



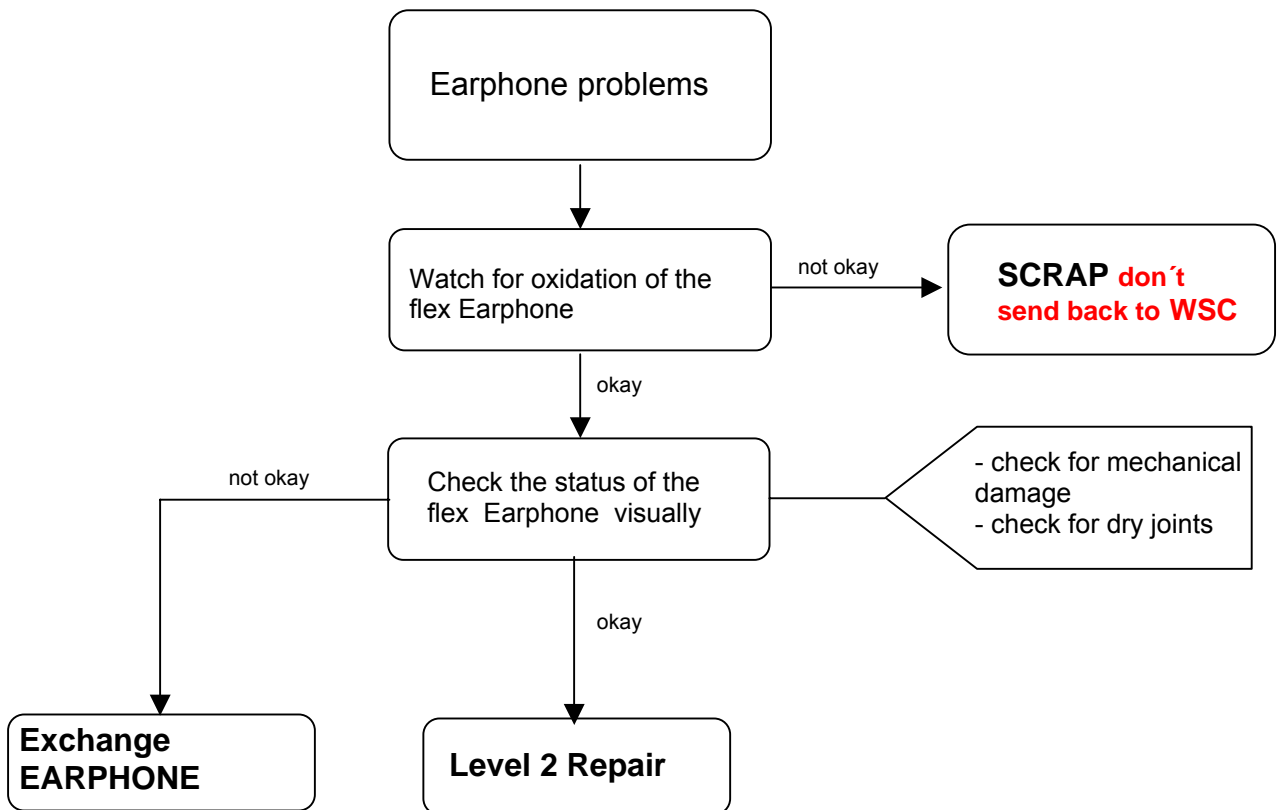
Connector Vibra

Use soldering iron to remove defective component. Avoid excessive heat! Watch surrounding components! Resolder new component afterwards.

E-commerce order number: L50634-Z97-C63
 Soldering temperature: 240 - 255°C
 IRIS Diagnose Code: 75100 : Acoustics / Vibra /No Function

11. Earphone

Fault Symptoms	
Customer: Audio problems	GRT: Tbd.



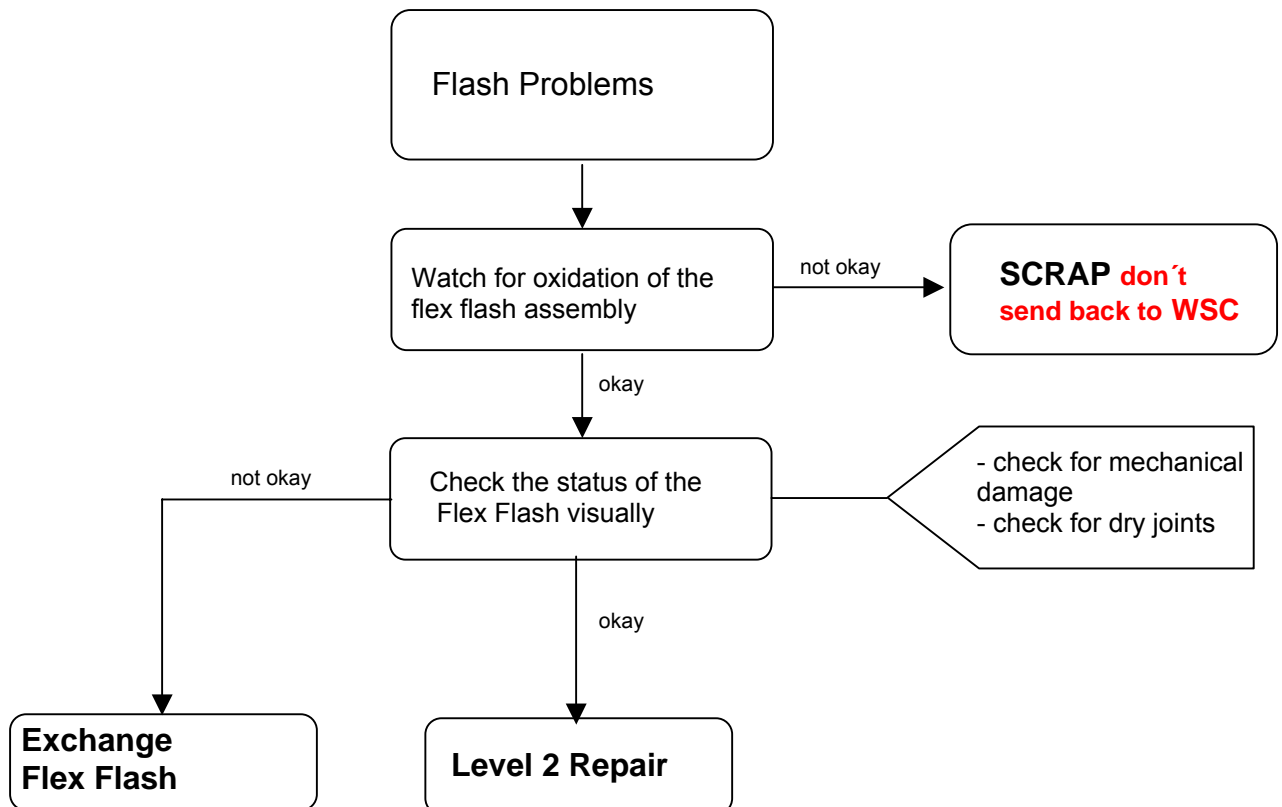
Earphone

Use soldering iron to remove defective component. Avoid excessive heat! Watch surrounding components! Resolder new component afterwards.

E-commerce order number: L50604-F3090-X923
Soldering temperature: 240 - 255°C
IRIS Diagnose Code: 72110 : Acoustics/Receiving/Earcap/No Function
72110 : Acoustics/Receiving/Earcap/Noise

12. Flexible Camera Flash Assembly

Fault Symptoms	
Customer: Flash is not working	GRT: Tbd.



Flex Flash Assembly

Use soldering iron to remove defective component. Avoid excessive heat! Watch surrounding components! Resolder new component afterwards.

E-commerce order number:

Soldering temperature: 240 - 255°C

IRIS Diagnose Code: 9B300 : Functionality /Integrated Camera / Flashlight defective