

Proprietary data, company confidential.
All rights reserved

Als Betriebsgeheimnis anvertraut
Alle Rechte vorbehalten

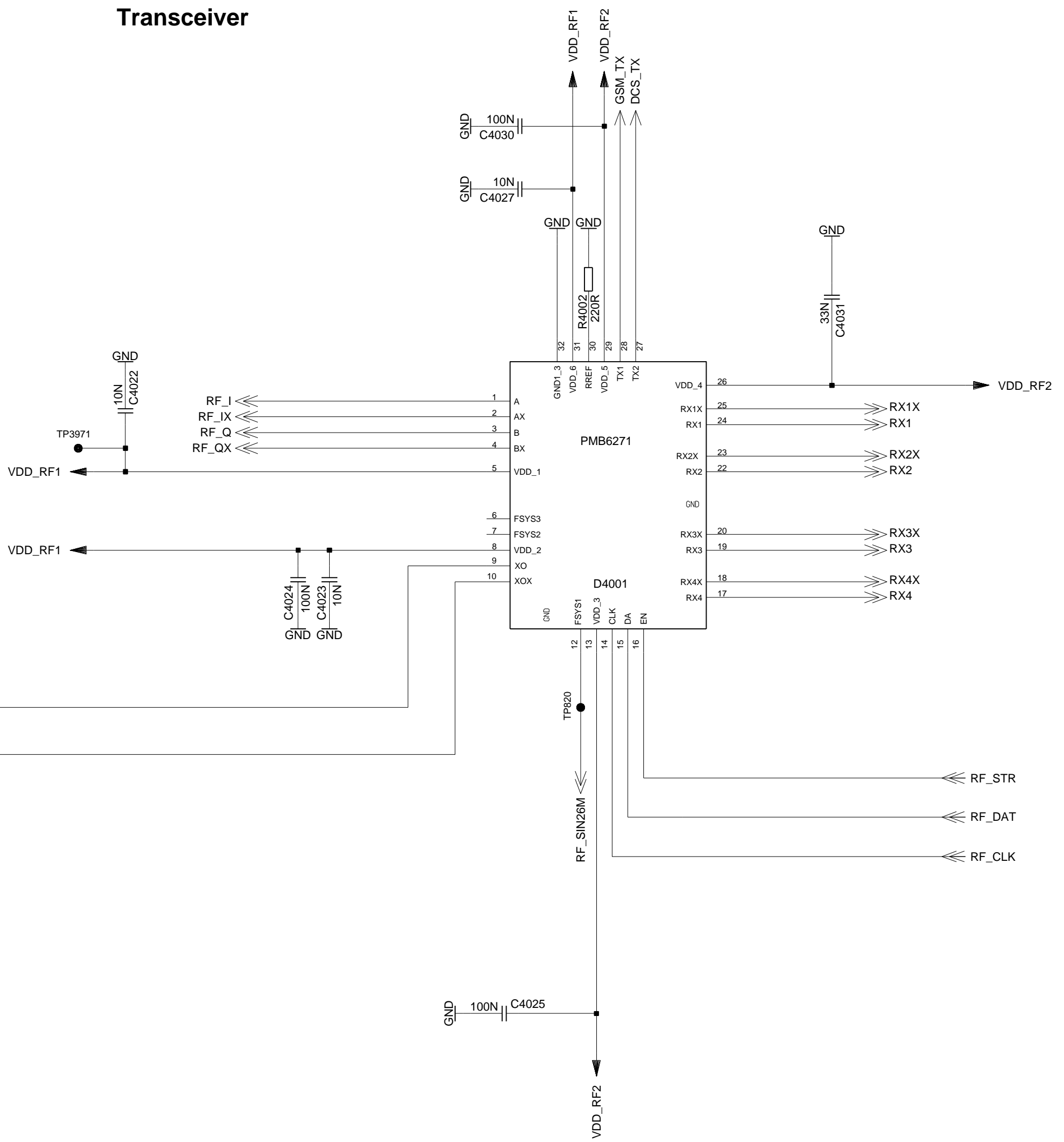
1	2	3	4	5
HIERARCHY			SHEET	PDF-SHEET
A5B00900202727-33603			index	sheet 1
			netlist1	sheet 2
			poslist1	sheet 3
			page1	----
			sheet1	sheet 4
			sheet2	sheet 5
			sheet3	sheet 6
			sheet4	sheet 7
			sheet5	sheet 8
			sheet6	sheet 9
			sheet7	sheet 10
			sheet8	sheet 11
			sheet9	sheet 12
			sheet10	sheet 13
			sheet11	sheet 14

				DATE	12.06.2005	Quail B2 Mainboard V1 Variant 1 TOP HIERARCHY LEVEL SCHEMATIC	1:1
				USER	DONG WEI		
				APPR'D			
				COM MD PD HW4 BJ			
				Siemens AG		241096	index
1	33604	12.06.2005	DW	(Created by BOM number: A5B00900202728-33604)			
VERS.	CHANGE NUMBER	DATE	NAME				

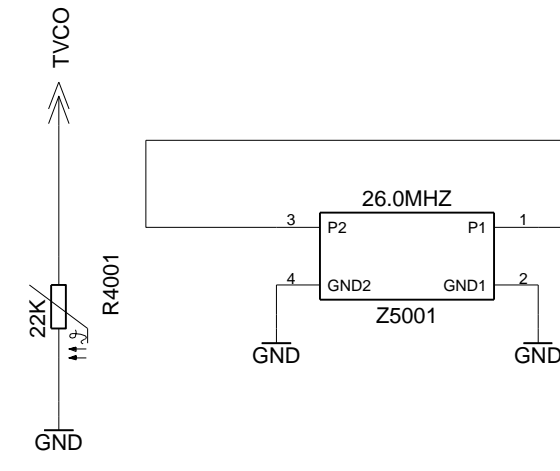
RF_SD2_RFmD-PA

4001-4099

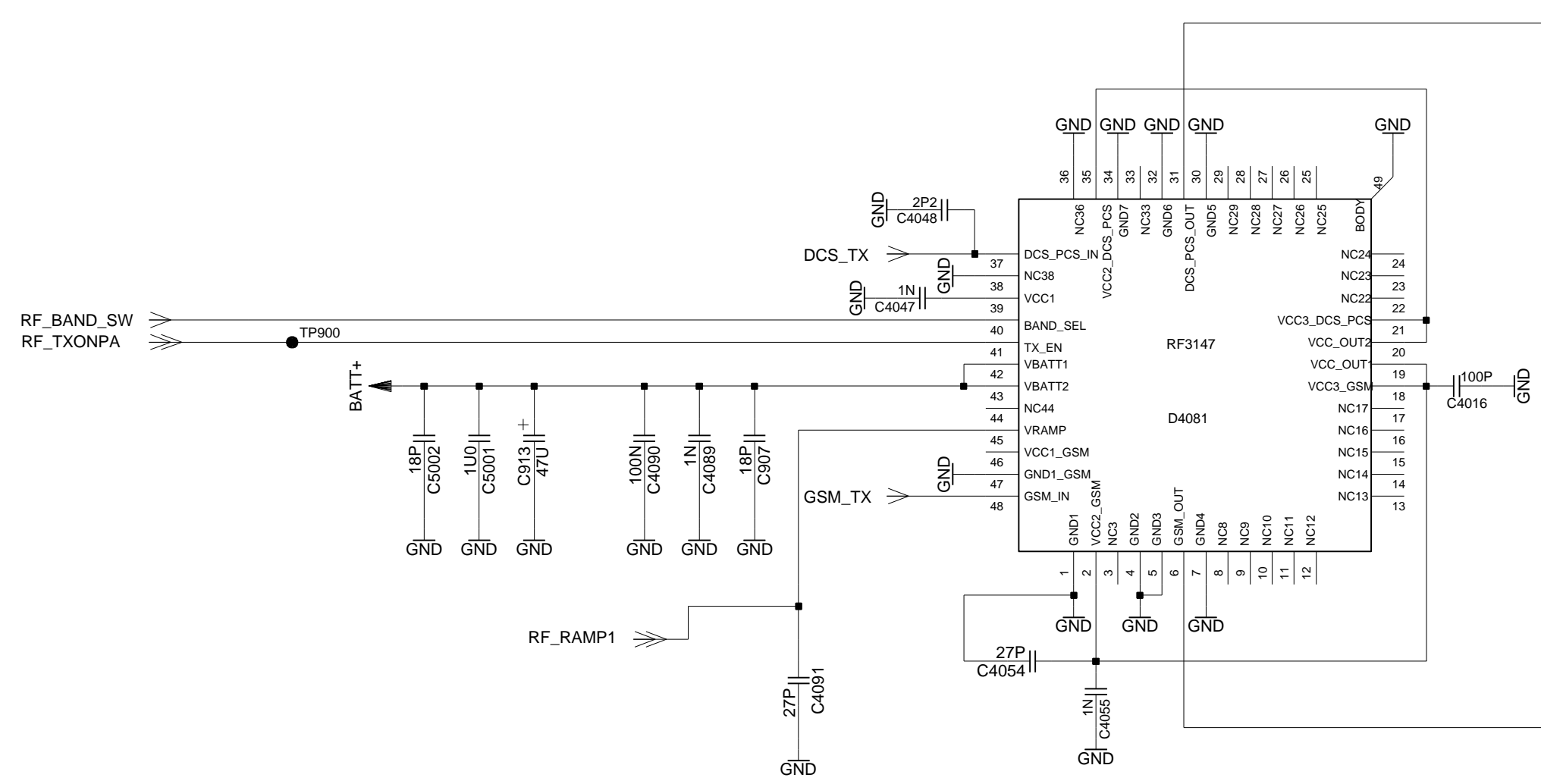
Transceiver



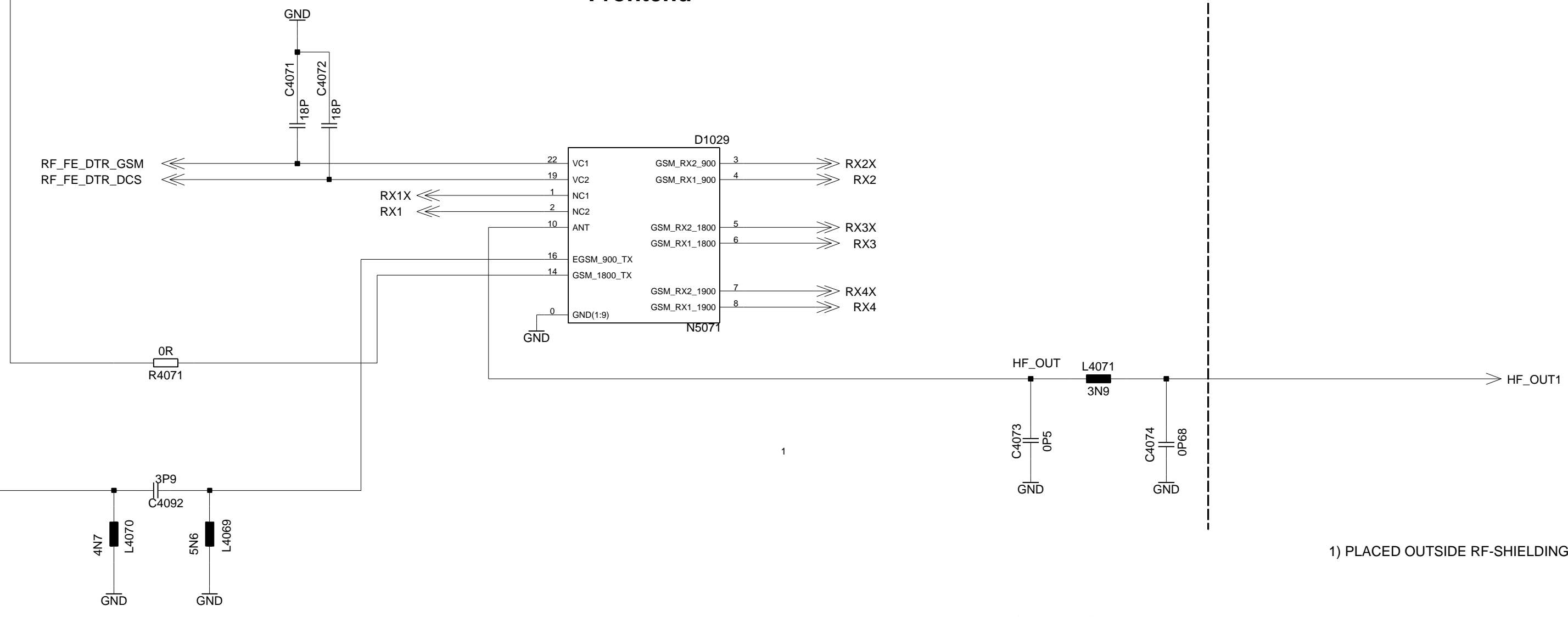
Oscillator



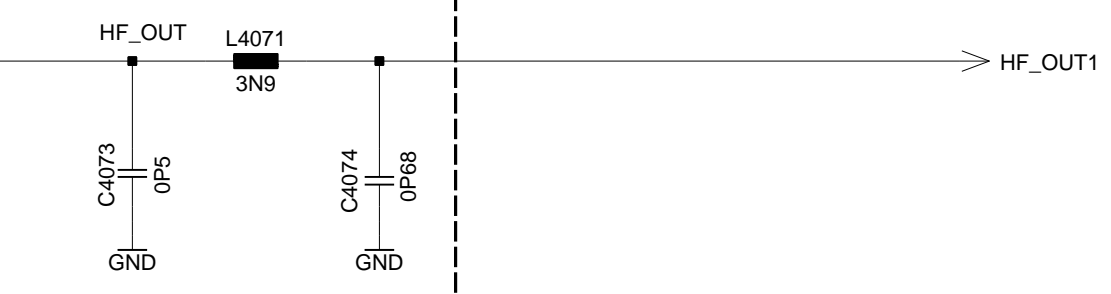
PA



Frontend



Antenna



1) PLACED OUTSIDE RF-SHIELDING NB = nicht bestueckt NG = keine Sachnummer

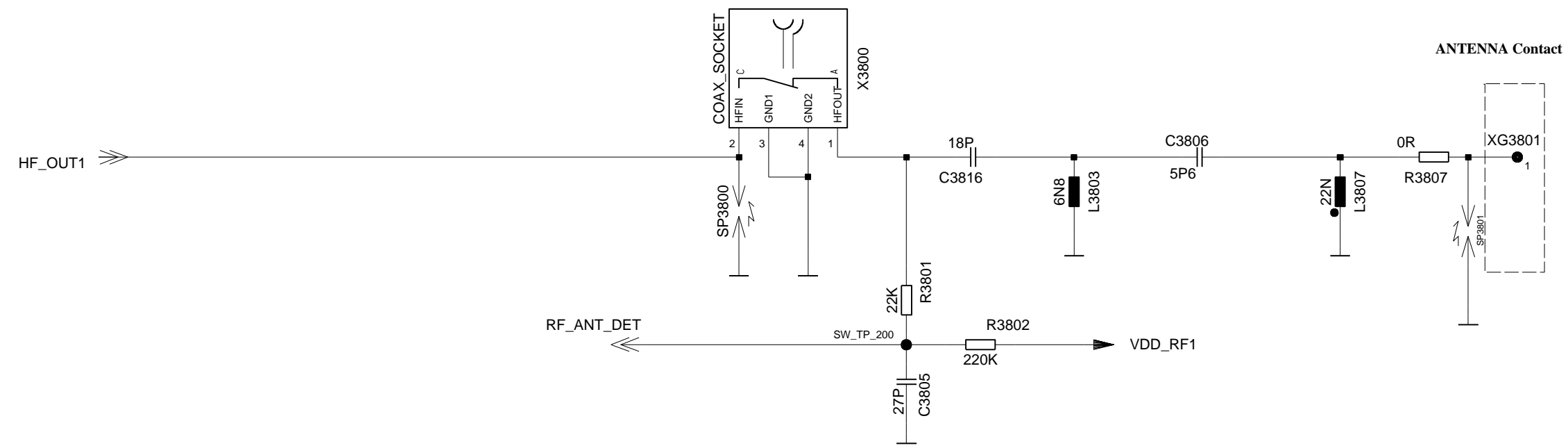
Sin nuestra expresa autorización, queda terminantemente prohibida la reproducción total o parcial de este documento, así como su uso indebido y/o su explotación o comunicación terceros. De los infractores se exigirá el correspondiente resarcimiento de daños y perjuicios. Se reserva todos los derechos para el caso de la concesión de patentes de invención o el registro de Modelos Industriales.

Without our express authorization, copying of this document, and giving to others and the use or communication of the contents thereof, are forbidden without express authority. Offenders are liable to the payment of damages. All rights are reserved in the event of the grant of a Patent or the registration of a Utility Model or Design.

Wiedergabe sowie Weiterverbreitung dieses Urtextes, Verwertung und Mitteilung ihres Inhalts nicht gestattet, soweit nicht ausdrücklich zugestanden. Zuwiderhandlungen verpflichten zu Schadenersatz. Alle Rechte für den Fall der Patentierung oder GM-Eintragung vorbehalten.

DATE	12.06.2005	Quail B2 Mainboard V1	
USER	DONG WEI	Variant 1	
APPRD		TOP HIERARCHY LEVEL	1:1
		SCHEMATIC	
		COM MD PD HW4 BJ	
		Siemens AG	241096
			sheet1
1	33604	12.06.2005	DW
VERS.	CHANGE NUMBER	DATE	NAME

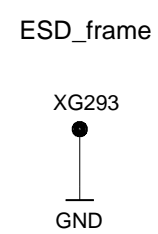
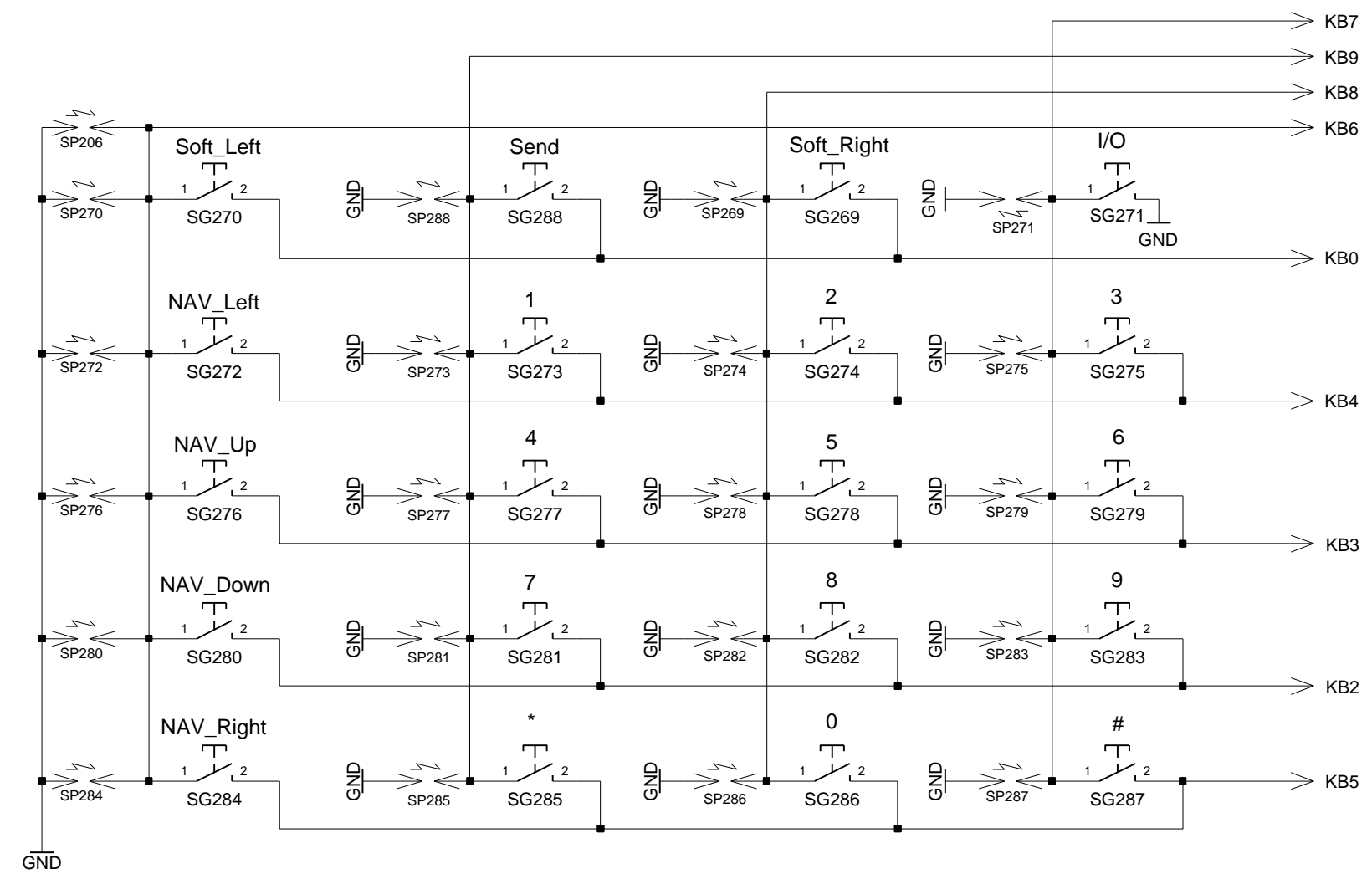
ANTENNA_CIRCUIT
3800-3849



TP3800 ● Test Point for Service Test

DATE	12.06.2005	Quail B2 Mainboard V1 Variant 1 TOP HIERARCHY LEVEL SCHEMATIC	1:1
USER	DONG WEI		
APPR'D			
COM MD PD HW4 BJ		Siemens AG	241096
VERS.	CHANGE NUMBER		
1	33604	12.06.2005	DW
(Created by BOM number: A5B00900202728-33604)			

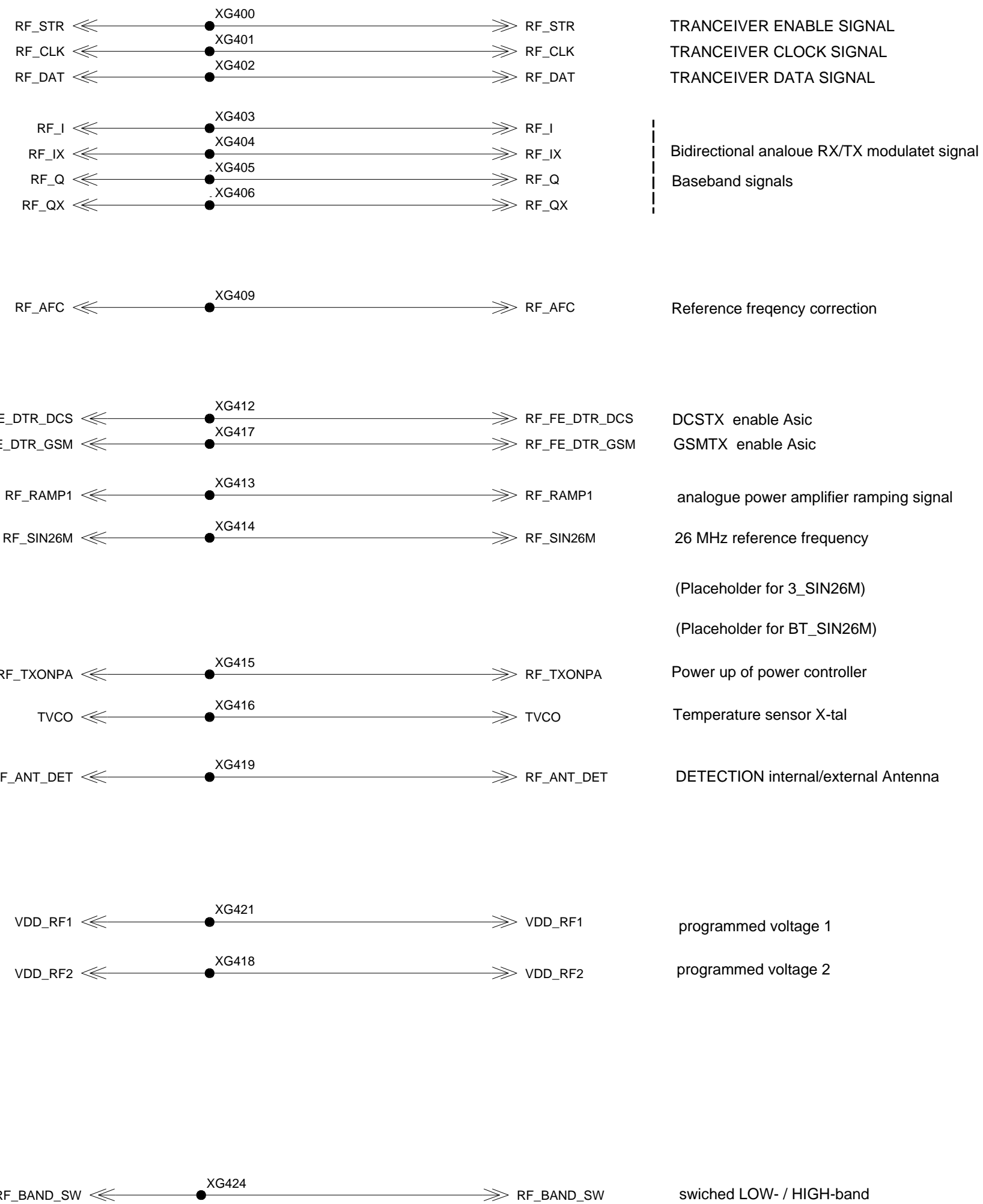
MMI MAINBOARD



			DATE	12.06.2005	Quail B2 Mainboard V1 Variant 1 TOP HIERARCHY LEVEL SCHEMATIC	1:1
			USER	DONG WEI		
			APPR'D			
			COM MD PD HW4 BJ			
			Siemens AG	241096	sheet3	
1	33604	12.06.2005	DW		(Created by BOM number: A5B00900202728-33604)	
VERS.	CHANGE NUMBER	DATE	NAME			

HIT_POINTS LOGIK/HF_PART_1_SD2

400-449

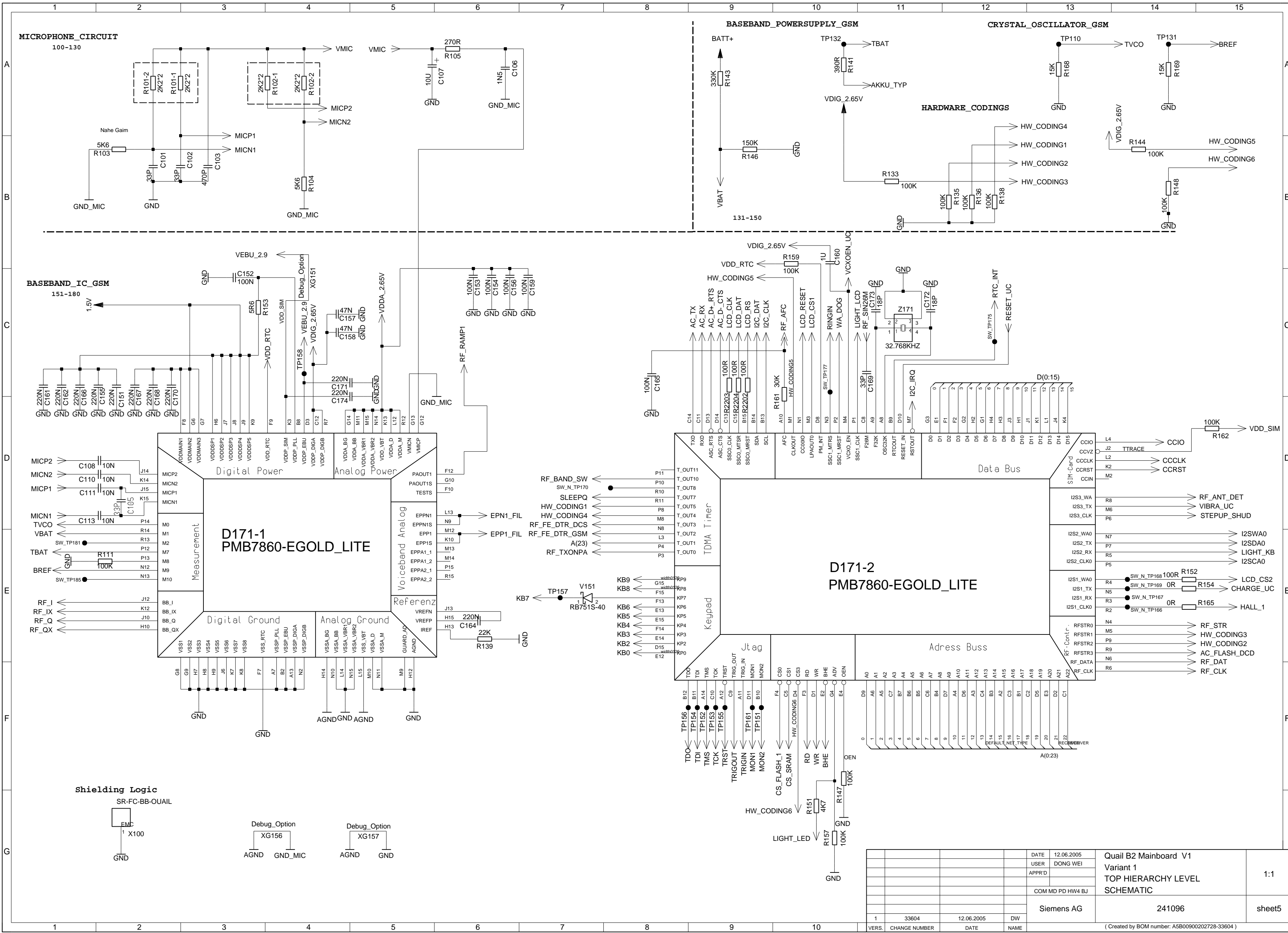


HF_OUT1 <<< XG2826

DATE	12.06.2005	Quail B2 Mainboard V1 Variant 1 TOP HIERARCHY LEVEL SCHEMATIC	1:1			
USER	DONG WEI					
APPR'D						
COM MD PD HW4 BJ		Siemens AG	241096			
VERS.	CHANGE NUMBER					
1	33604	DATE	12.06.2005	NAME	DW	sheet4

Proprietary data. Company confidential.
all rights reserved

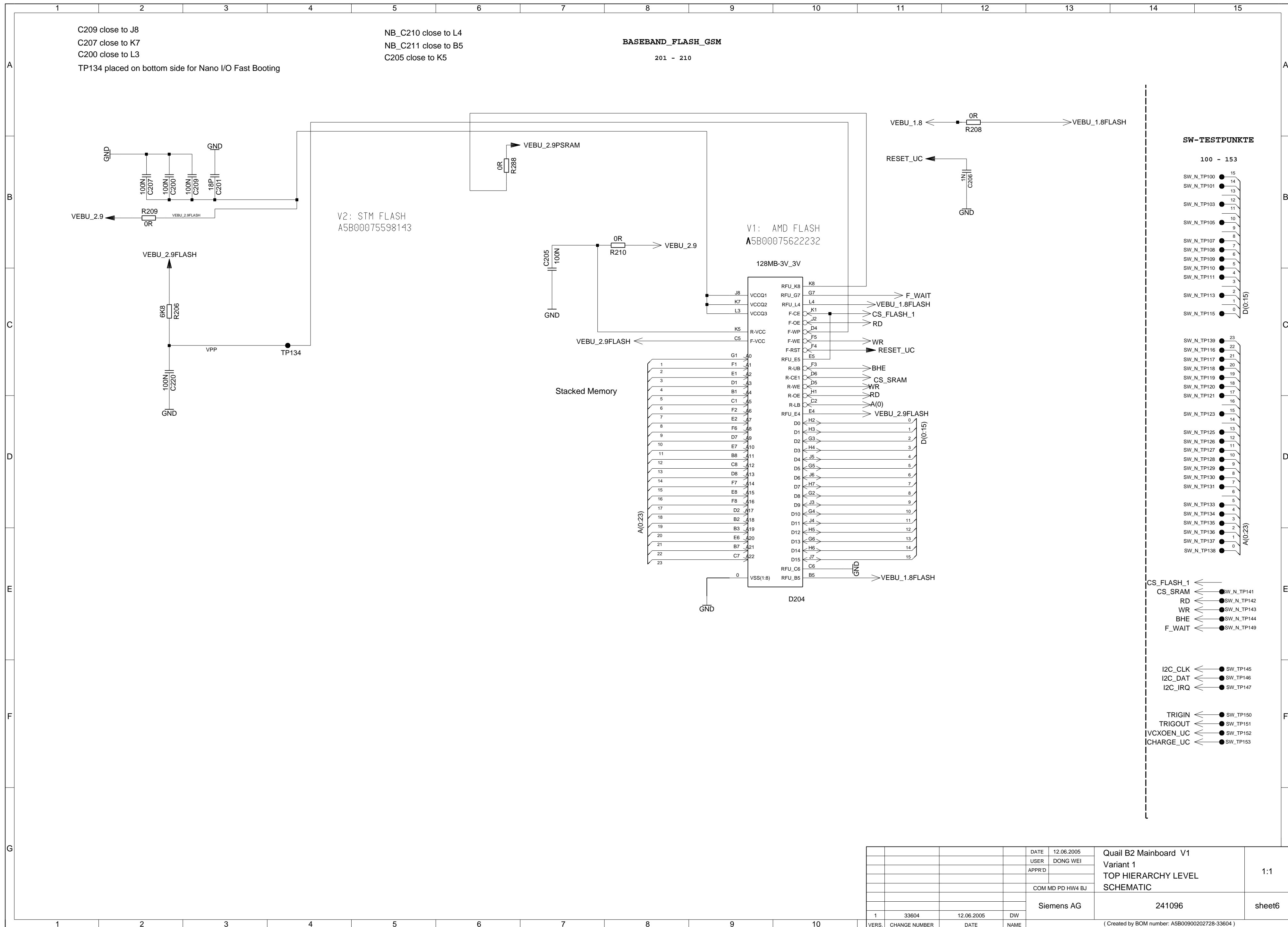
Als Betriebsgeheimnis anvertraut
alle Rechte vorbehalten



DATE	12.06.2005	Quail B2 Mainboard V1	
USER	DONG WEI	Variant 1	
APPRD		TOP HIERARCHY LEVEL	
		SCHEMATIC	1:1
COM MD PD HW4 BJ			
Siemens AG		241096	sheet5
1	33604	12.06.2005	DW
VERS.	CHANGE NUMBER	DATE	NAME
(Created by BOM number: A5800900202728-33604)			

Proprietary data, Company confidential.
all rights reserved

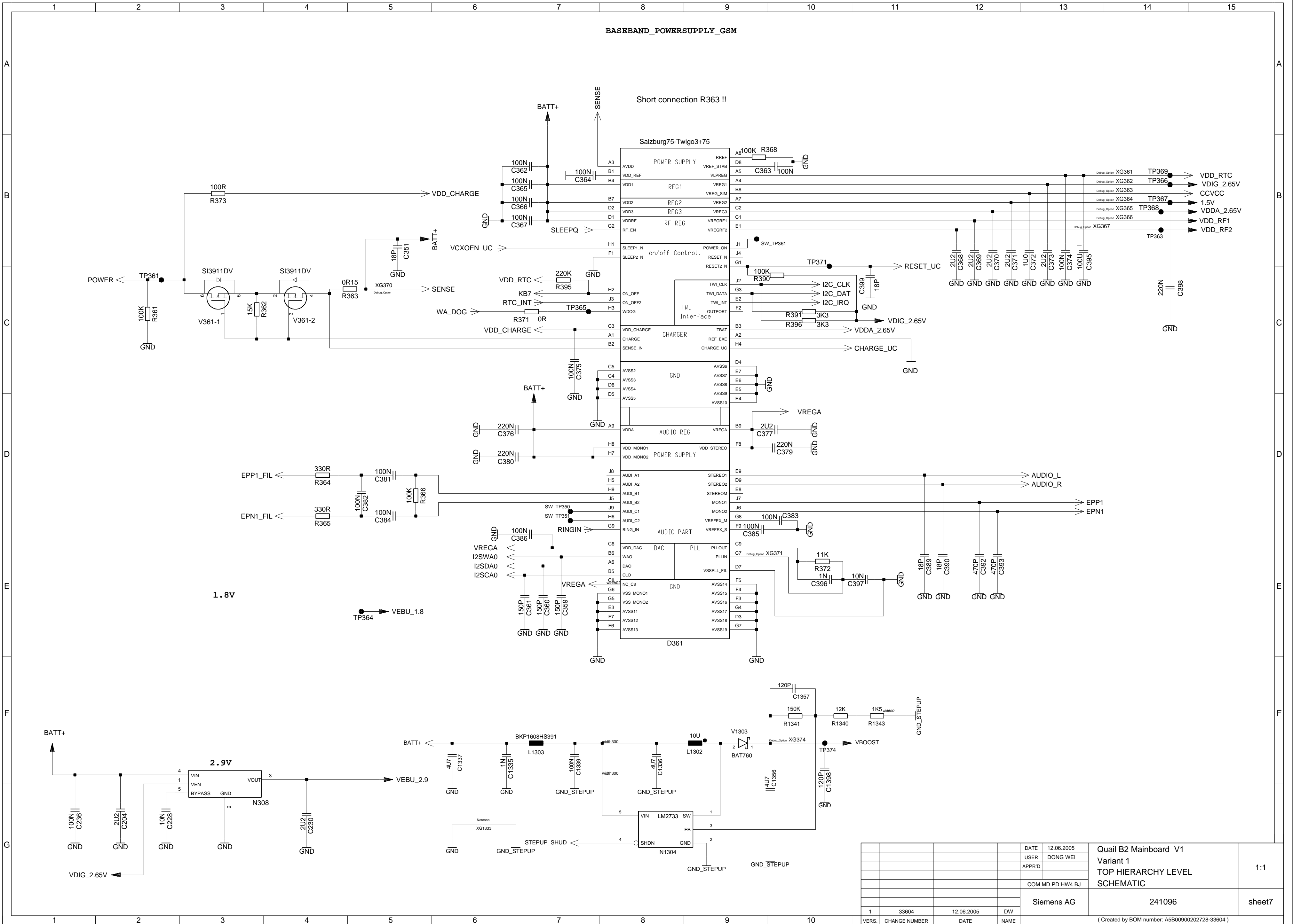
Als Betriebsgeheimnis anvertraut
alle Rechte vorbehalten



DATE	12.06.2005	Quail B2 Mainboard V1 Variant 1 TOP HIERARCHY LEVEL SCHEMATIC	1:1
USER	DONG WEI		
APPR'D			
COM MD PD HW4 BJ			
Siemens AG		241096	sheet6
1	33604	12.06.2005	DW
VERS.	CHANGE NUMBER	DATE	NAME

(Created by BOM number: A5B00900202728-33604)

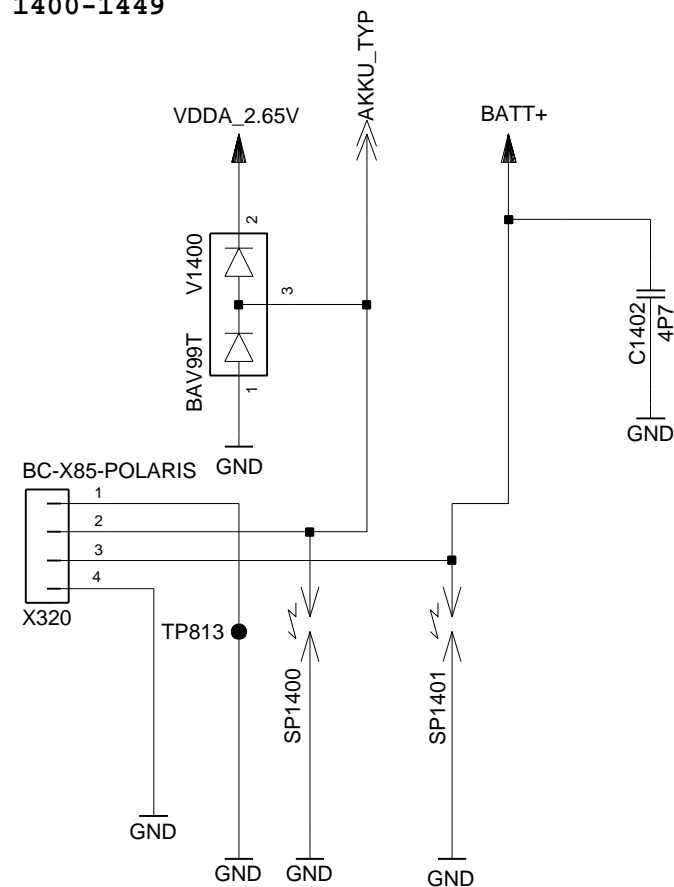
BASEBAND_POWERSUPPLY_GSM



DATE	12.06.2005	Quail B2 Mainboard V1	1:1
USER	DONG WEI	Variant 1	
APPRD		TOP HIERARCHY LEVEL	
COM MD PD HW4 BJ			sheet7
Siemens AG			
241096			
(Created by BOM number: A5B00900202728-33604)			

VERS.	CHANGE NUMBER	DATE	NAME
1	33604	12.06.2005	DW

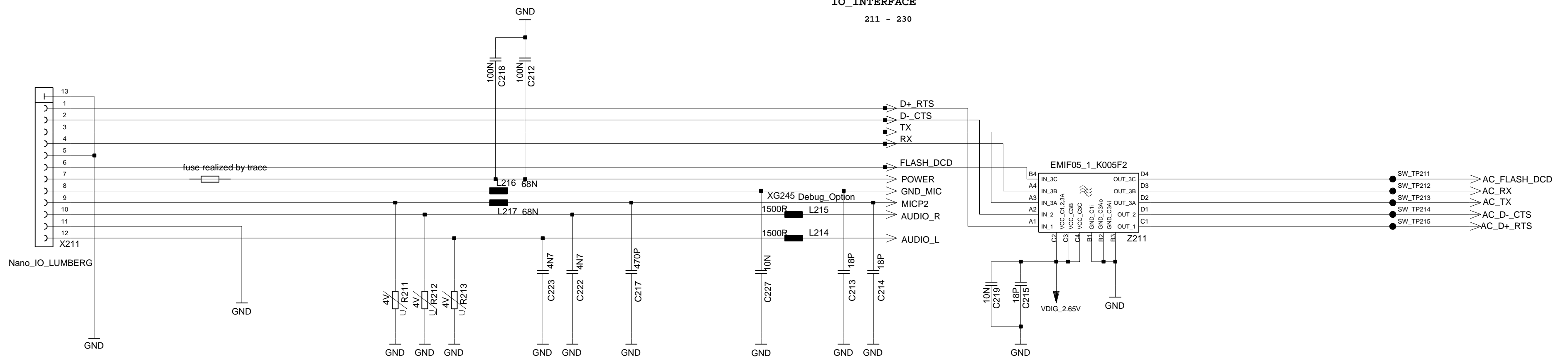
BATTERY CONNECTOR
1400-1449



Please pay attention to the Battery connector pin1 and pin3
Because connector be rotated 180 degree in Quail layout
So pin1 and pin3 be exchanged in Quail schematic

fuse: shorted footprint with trace between pads at layout

IO_INTERFACE
211 - 230

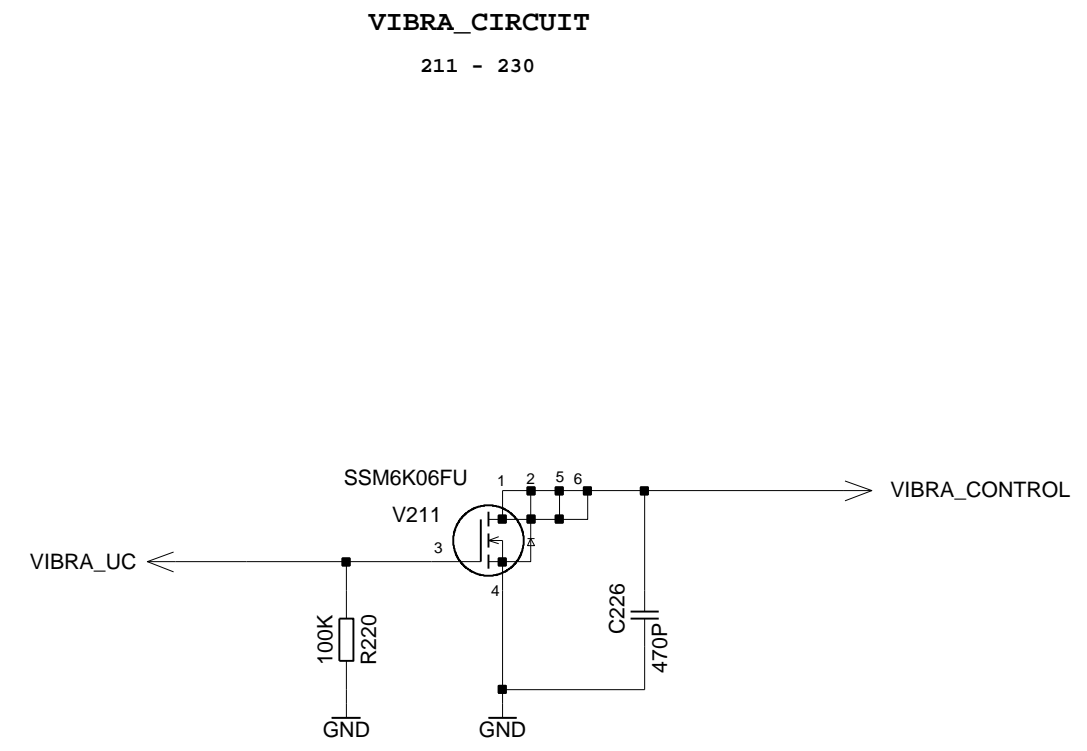
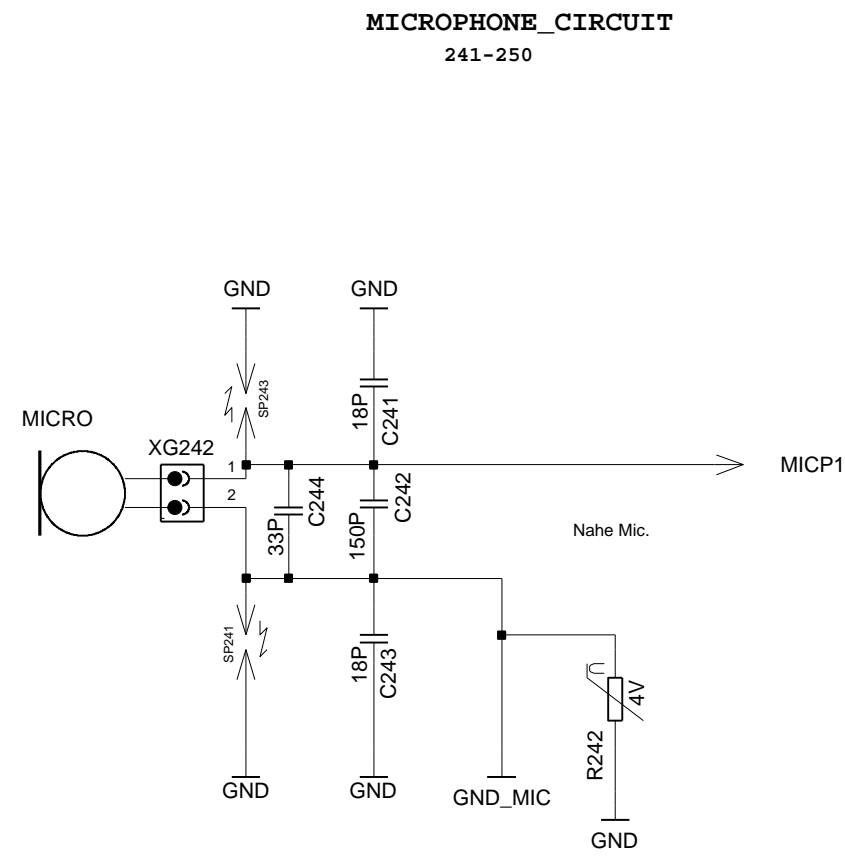


Test Points for Fast Booting during ramp-up
Must be visible after assembled with mechanical parts (lift-part and baselower)

- TP201 → RX
- TP202 → TX
- TP203 → POWER
- TP134 → VPP

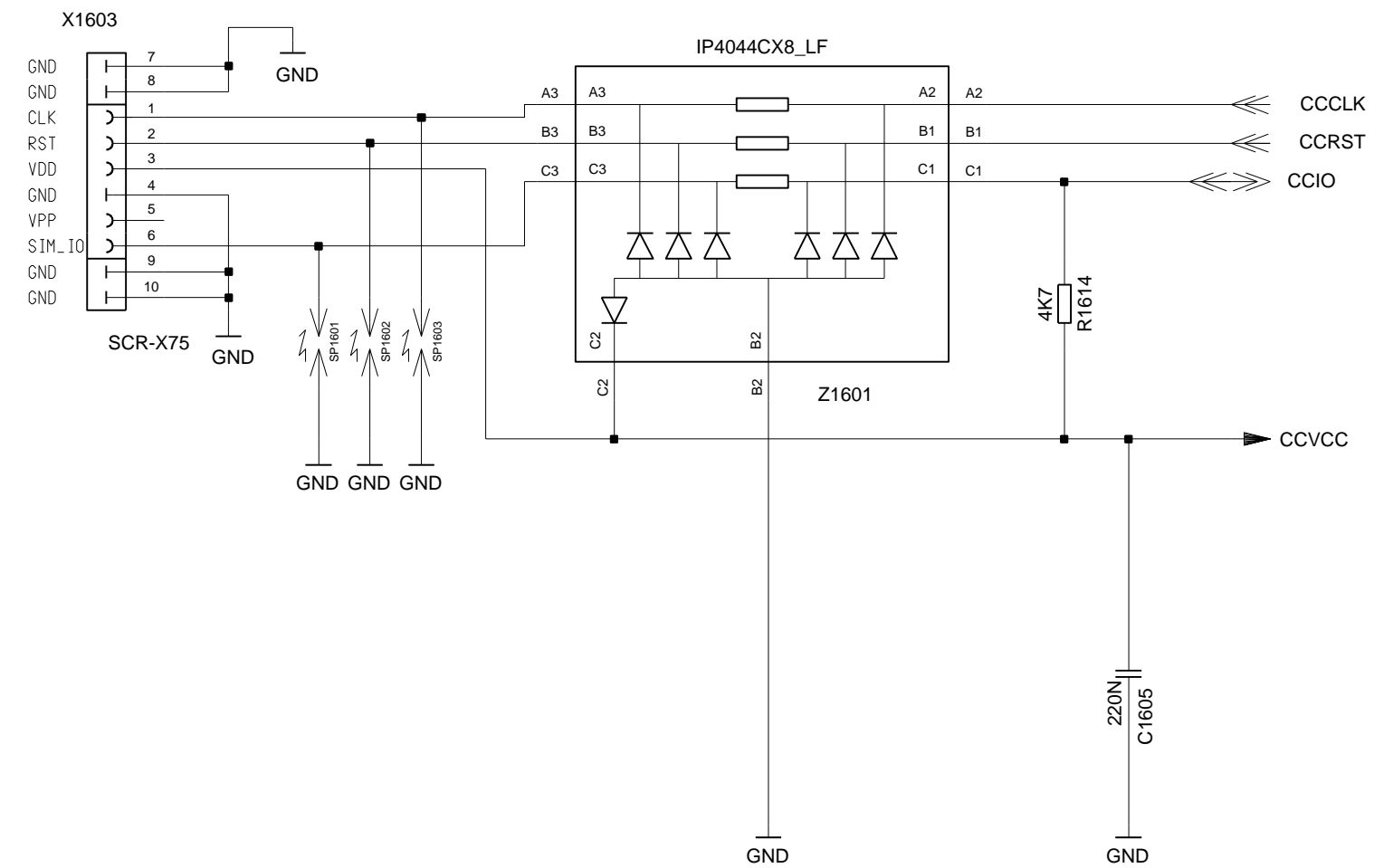
DATE	12.06.2005	Quail B2 Mainboard V1	
USER	DONG WEI	Variant 1	
APPR'D		TOP HIERARCHY LEVEL	1:1
		COM MD PD HW4 BJ	
		Siemens AG	241096
			sheet8
1	33604	12.06.2005	DW
VERS.	CHANGE NUMBER	DATE	NAME

(Created by BOM number: A5B00900202728-33604)

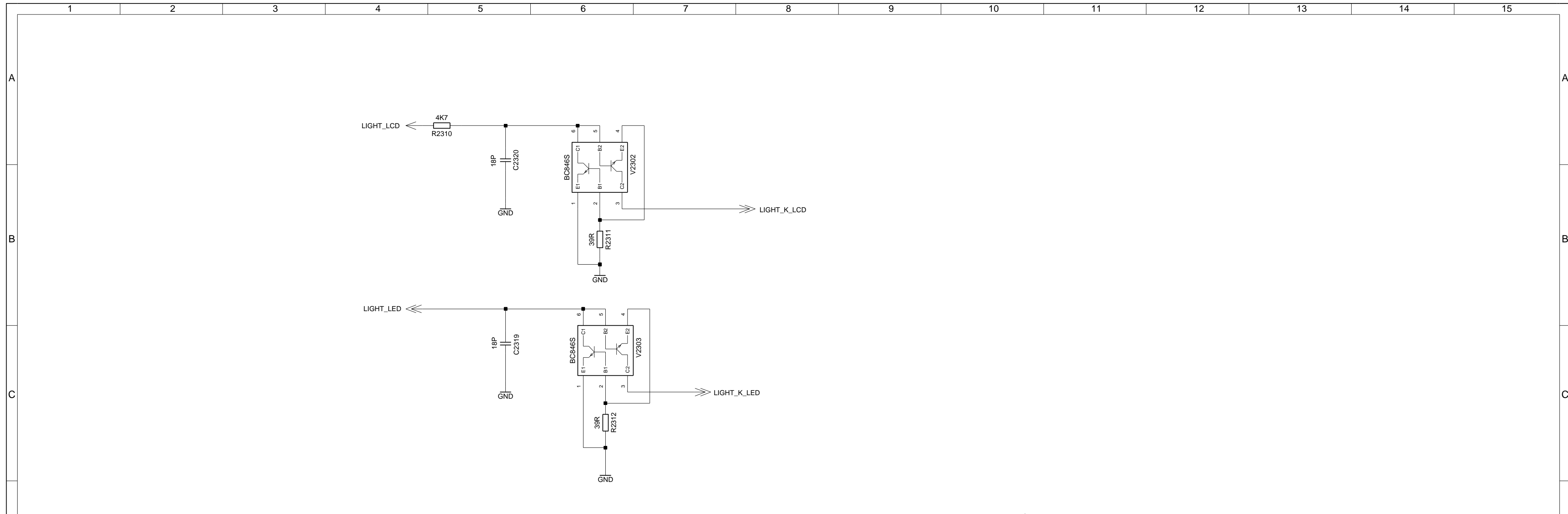


SIM_CONNECTOR

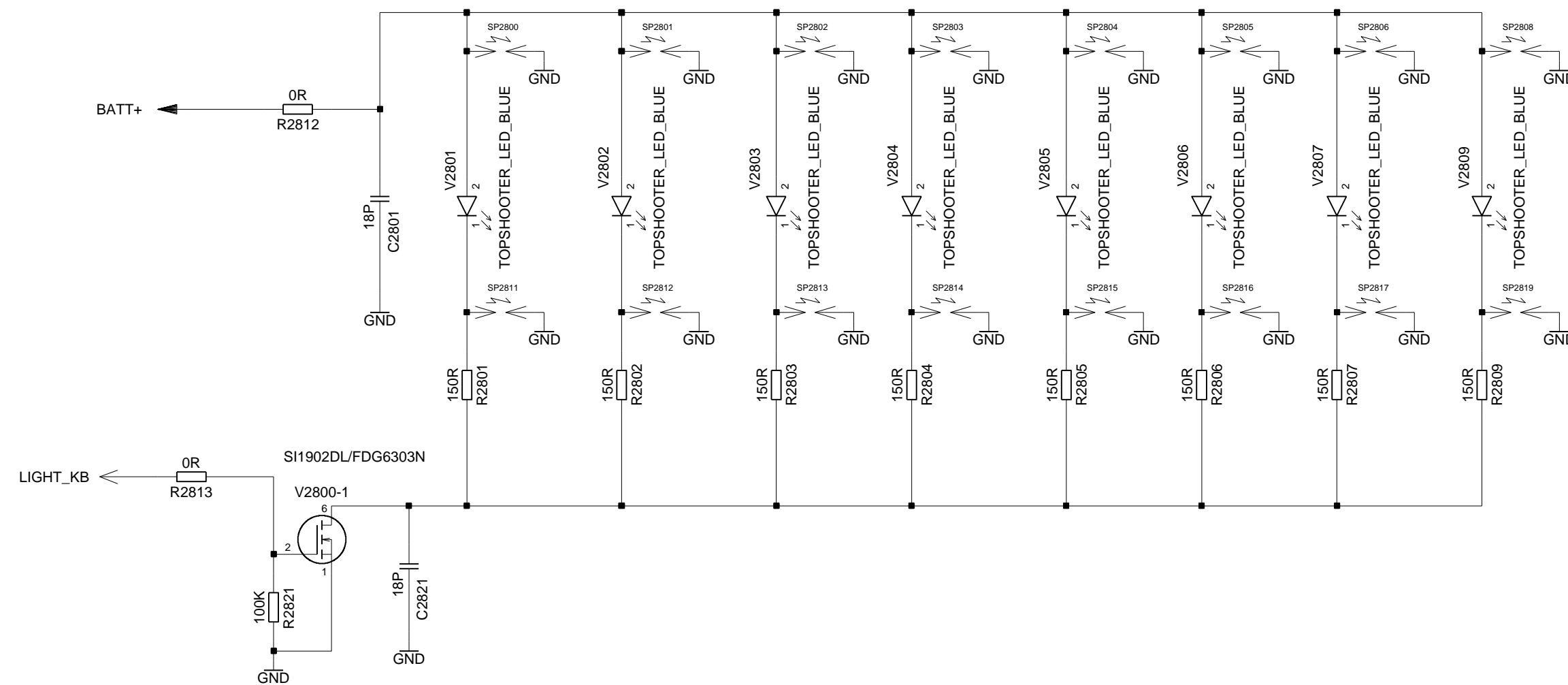
1600-1659



DATE	12.06.2005	Quail B2 Mainboard V1 Variant 1 TOP HIERARCHY LEVEL SCHEMATIC	1:1				
USER	DONG WEI						
APPR'D							
COM MD PD HW4 BJ		Siemens AG	241096				
VERS.	33604			DATE	12.06.2005	NAME	DW
(Created by BOM number: A5B00900202728-33604)							



KEYPAD_BACKLIGHT 2800-2899



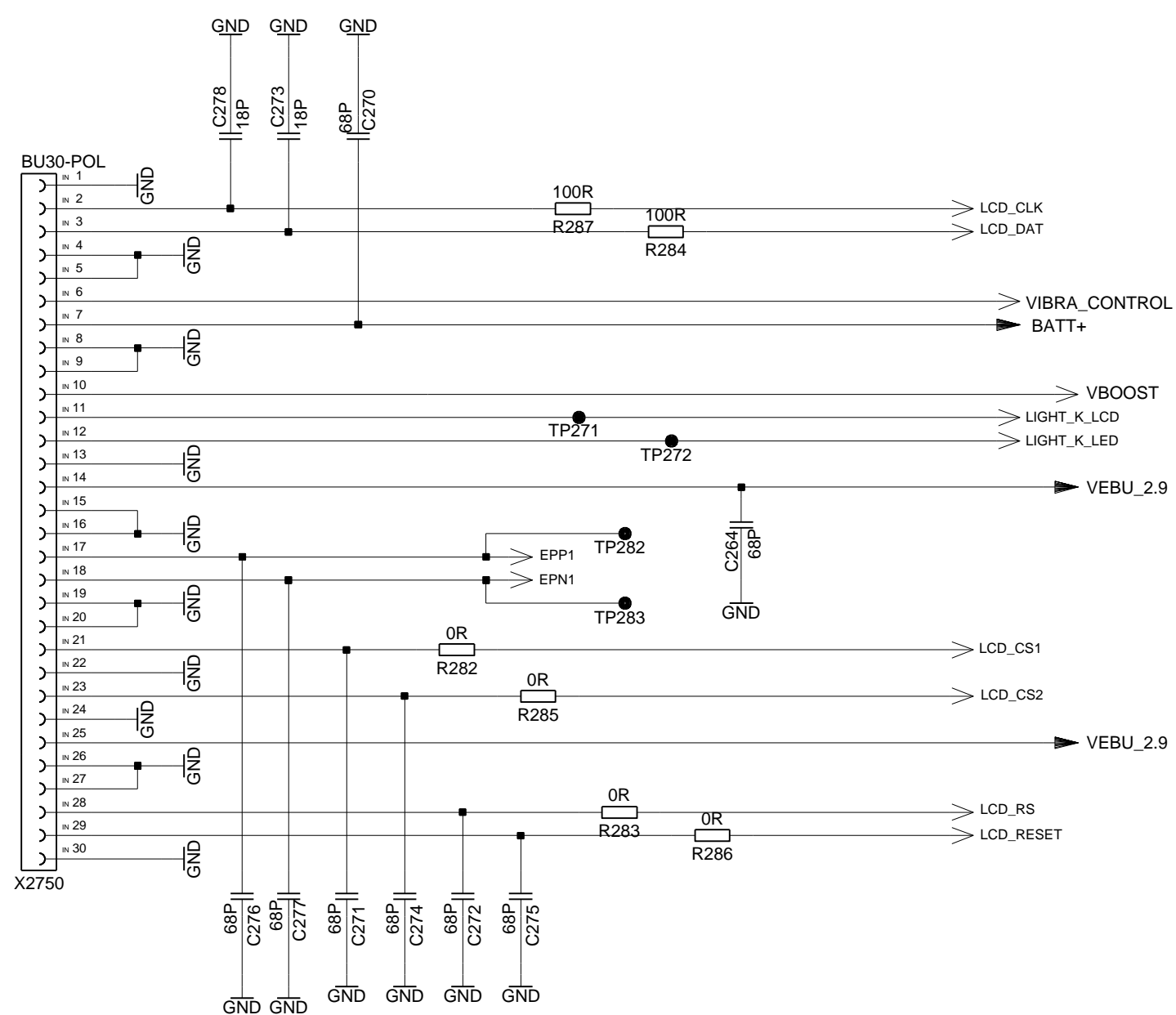
DATE	12.06.2005	Quail B2 Mainboard V1 Variant 1 TOP HIERARCHY LEVEL SCHEMATIC	1:1
USER	DONG WEI		
APPR'D			
COM MD PD HW4 BJ		Siemens AG	241096
VERS.	33604		
NAME	DW	sheet10	

(Created by BOM number: A5B00900202728-33604)

Proprietary data, Company confidential.
all rights reserved

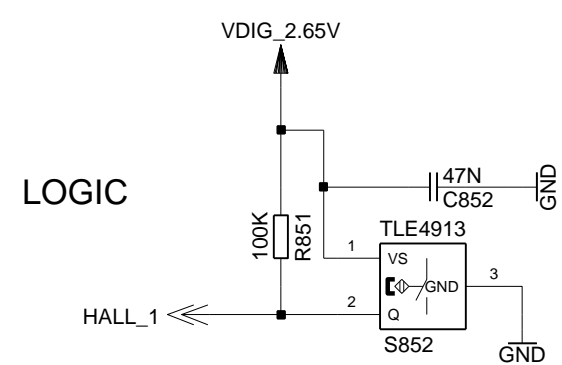
Als Betriebsgeheimnis anvertraut
alle Rechte vorbehalten

MMI CONNECTOR 270-280



TP270 ● Fiducial for B2B connector automatic assembly

MAGNETIC SWITCH

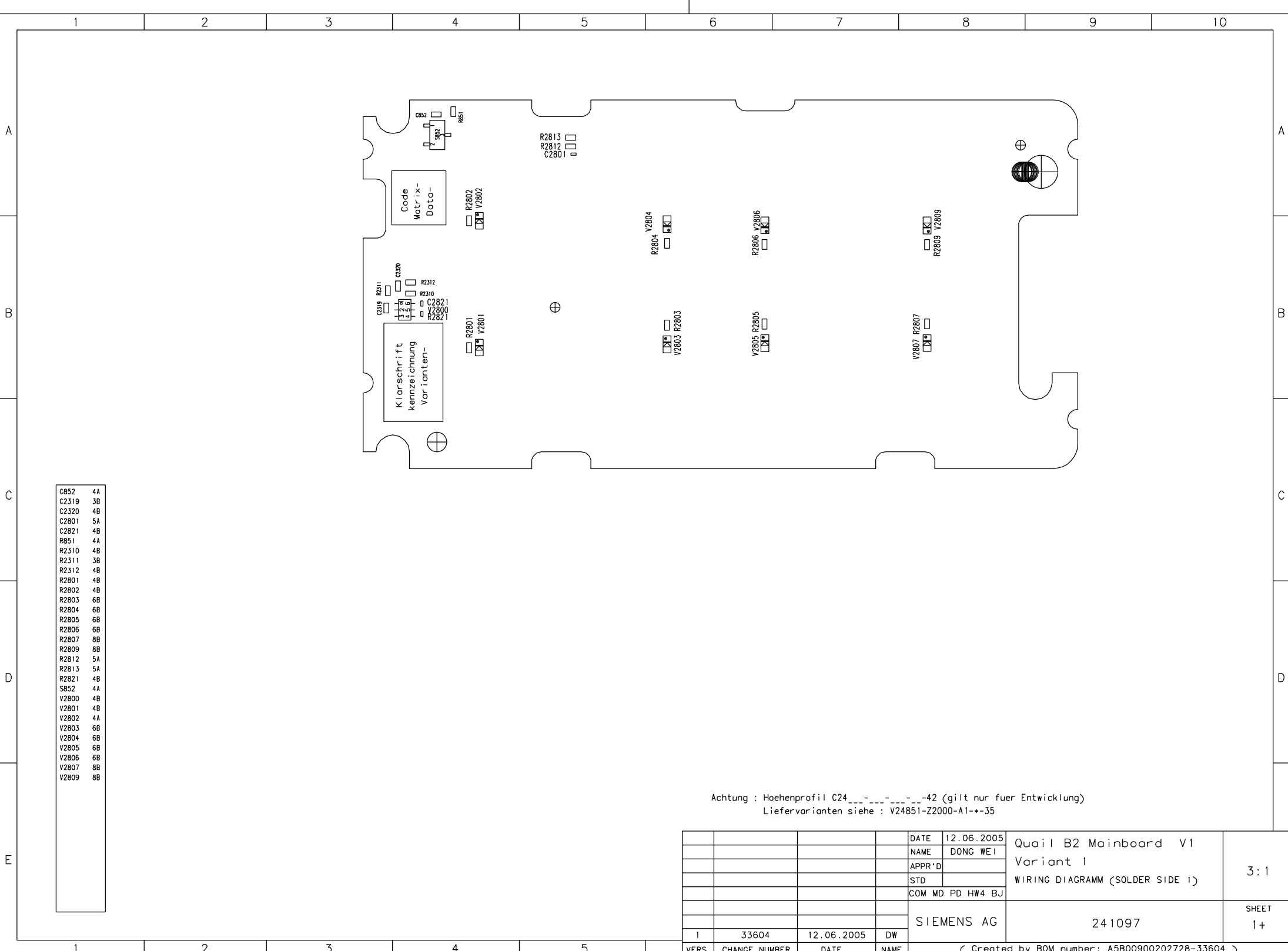


DATE	12.06.2005	Quail B2 Mainboard V1 Variant 1 TOP HIERARCHY LEVEL SCHEMATIC	1:1
USER	DONG WEI		
APPR'D			
COM MD PD HW4 BJ		Siemens AG	241096
VERS.	CHANGE NUMBER	DATE	NAME
1	33604	12.06.2005	DW

(Created by BOM number: A5B00900202728-33604)

PROPRIETARY DATA - COMPANY CONFIDENTIAL
ALL RIGHTS RESERVED

ALS BETRIEBSCHEIMNIS ANVERTRAUT
ALLE RECHTE VORBEHALTEN



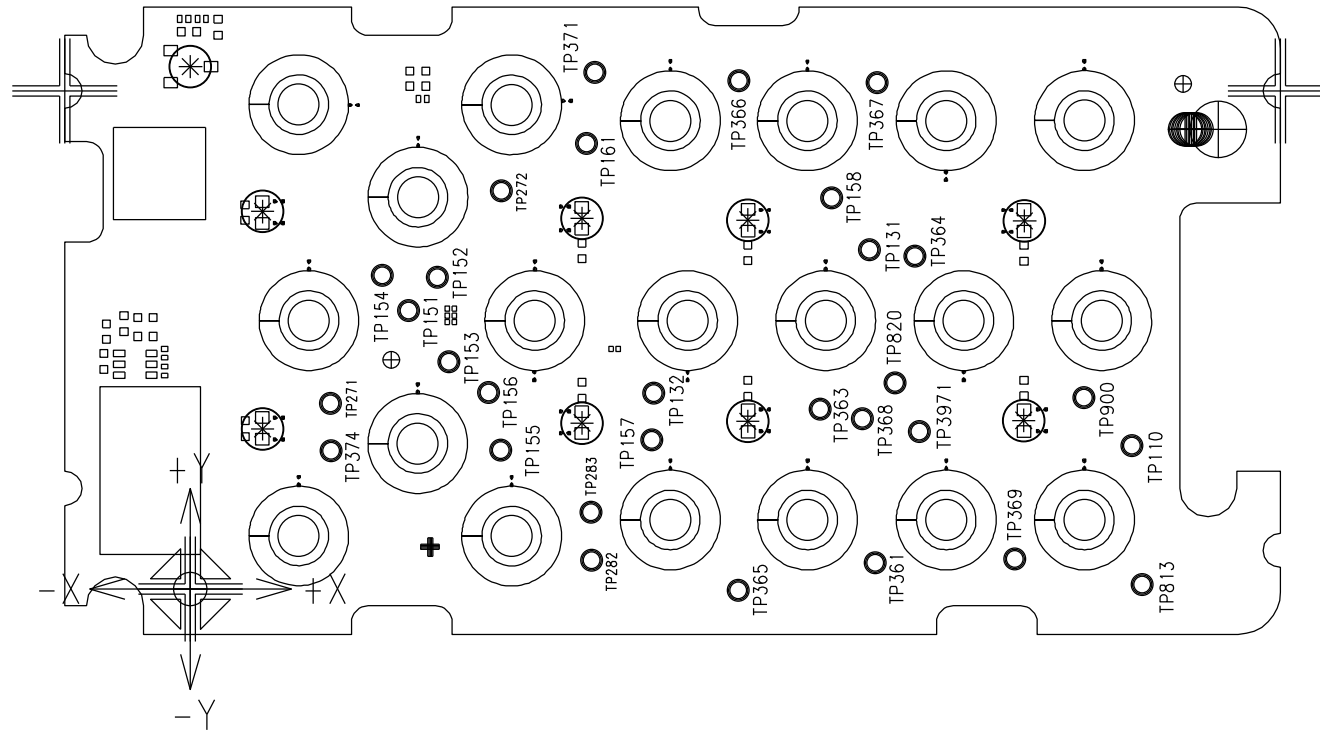
C852	4A
C2319	3B
C2320	4B
C2801	5A
C2821	4B
R851	4A
R2310	4B
R2311	3B
R2312	4B
R2801	4B
R2802	4B
R2803	6B
R2804	6B
R2805	6B
R2806	6B
R2807	8B
R2809	8B
R2812	5A
R2813	5A
R2821	4B
S852	4A
V2800	4B
V2801	4B
V2802	4A
V2803	6B
V2804	6B
V2805	6B
V2806	6B
V2807	8B
V2809	8B

Achtung : Hoehenprofil C24_--_--_--_42 (gilt nur fuer Entwicklung)
Liefervarianten siehe : V24851-Z2000-A1--35

DATE	12.06.2005	Quail B2 Mainboard V1 Variant 1 WIRING DIAGRAM (SOLDER SIDE 1)	3:1
NAME	DONG WEI		
APPR'D			
STD			
COM MD PD HW4 BJ			
SIEMENS AG		241097	SHEET 1+
1	33604	12.06.2005	DW
VERS.	CHANGE NUMBER	DATE	NAME
(Created by BOM number: A5B00900202728-33604)			

PROPRIETARY DATA - COMPANY CONFIDENTIAL
ALL RIGHTS RESERVED

ALS BETRIEBSCHEIMNIS ANVERTRAUT
ALLE RECHTE VORBEHALTEN

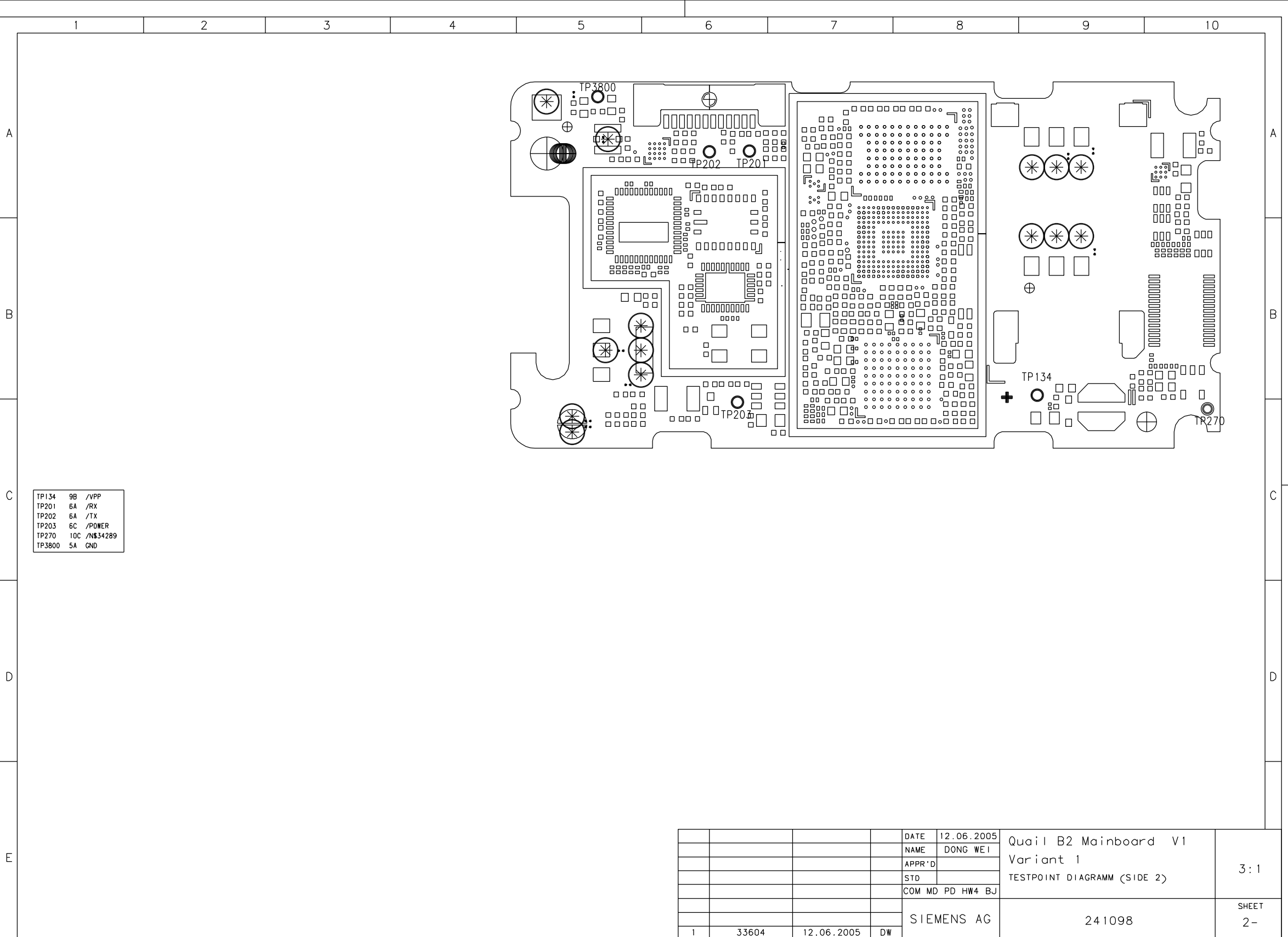


TP110	8B	/TVCO
TP131	7B	/BREF
TP132	6B	/TBAT
TP151	5B	/MON2
TP152	5B	/TMS
TP153	5B	/TCK
TP154	5B	/TD1
TP155	5B	/TRST
TP156	5B	/TDO
TP157	8B	/KB7
TP158	7A	VEBU_2.9
TP161	6A	/MON1
TP271	4B	/LIGHT_K_LCD
TP272	5A	/LIGHT_K_LED
TP282	6C	/EPP1
TP283	6B	/EPN1
TP361	7C	/POWER
TP363	7B	VDD_RF2
TP364	7B	VEBU_1.8
TP365	6C	/N5679
TP366	6A	VDD_2.65V
TP367	7A	1.5V
TP368	7B	VDDA_2.65V
TP369	8C	/VDD_RTC
TP371	6A	RESET_UC
TP374	4B	VBOOST
TP813	8C	GND
TP820	7B	/RF_S1N26M
TP900	8B	/RF_TXONPA
TP3971	7B	VDD_RF1

DATE	12.06.2005	Quail B2 Mainboard V1	3:1
NAME	DONG WEI	Variant 1	
APPR'D		TESTPOINT DIAGRAM (SIDE 1)	
STD			
COM MD PD HW4 BJ			
SIEMENS AG	241098		SHEET 1+
1	33604	12.06.2005	DW
VERS.	CHANGE NUMBER	DATE	NAME
(Created by BOM number: A5B00900202728-33604)			

PROPRIETARY DATA, COMPANY CONFIDENTIAL
ALL RIGHTS RESERVED

ALS BETRIEBSGEGEIMNIS ANVERTRAUT
ALLE RECHTE VORBEHALTEN



TP134	9B	/VPP
TP201	6A	/RX
TP202	6A	/TX
TP203	6C	/POWER
TP270	10C	/NS34289
TP3800	5A	GND

				DATE	12.06.2005	Quail B2 Mainboard V1 Variant 1 TESTPOINT DIAGRAM (SIDE 2)	3:1
				NAME	DONG WEI		
				APPR'D			
				STD			
				COM	MD PD HW4 BJ		
				SIEMENS AG		241098	SHEET 2-
1	33604	12.06.2005	DW				
VERS.	CHANGE NUMBER	DATE	NAME	(< Created by BOM number: A5B00900202728-33604 >)			