

Service Repair Documentation Level 2.5 – A62, A65, A70, A75



Release	Date	Department	Notes to change
1.0	13.09.2004	ICM MP CCQ GRM T	New document
1.1	13.12.2004	Com MD CC GRM T	Document modified
1.2	07.06.2005	Com MD CC GRM T	Lead Free added

Introduction

This Service Repair Documentation is intended to carry out repairs on Siemens repair level 2.5. The described failures shall be repaired in Siemens authorized local workshops only.

All repairs have to be carried out in an ESD protected environment and with ESD protected equipment/tools. For all activities the international ESD regulations have to be considered.

Assembling/disassembling has to be done according to the latest A62, A65, A70 & A75 Level 2 repair documentation. It has to be ensured that every repaired mobile Phone is checked according to the latest released General Test Instruction document (both documents are available in the Technical Support section of the C-market).

Check at least weekly C-market for updates and consider all A62, A65, A70 & A75 related Customer Care Information, and Repair Information who are relevant for A62, A65, A70 & A75.

A62 Partnumber on IMEI label:	S30880-S5890-#xxx
A65 Partnumber on IMEI label:	S30880-S5810-#xxx
A70 Partnumber on IMEI label:	S30880-S2770-#xxx
A75 Partnumber on IMEI label:	S30880-S2790-#xxx

, while # may be any letter (A-Z) and xxx may be any number from 100, 101, 102....

Scrap Handling: All Scrap information given in this manual are related to the SCRAP-Rules and instructions.

Attention: Consider the new "LEAD-FREE" soldering rules (A70 and A75 affected) (available in the communication market), avoid excessive heat.

If you have any questions regarding the repair procedures or technical questions spare not hesitate to contact our technical support team in Kamp-Lintfort, Germany:

Tel.: +49 2842 95 4666
Fax: +49 2842 95 4302
e-mail: st-support@klf.siemens.de

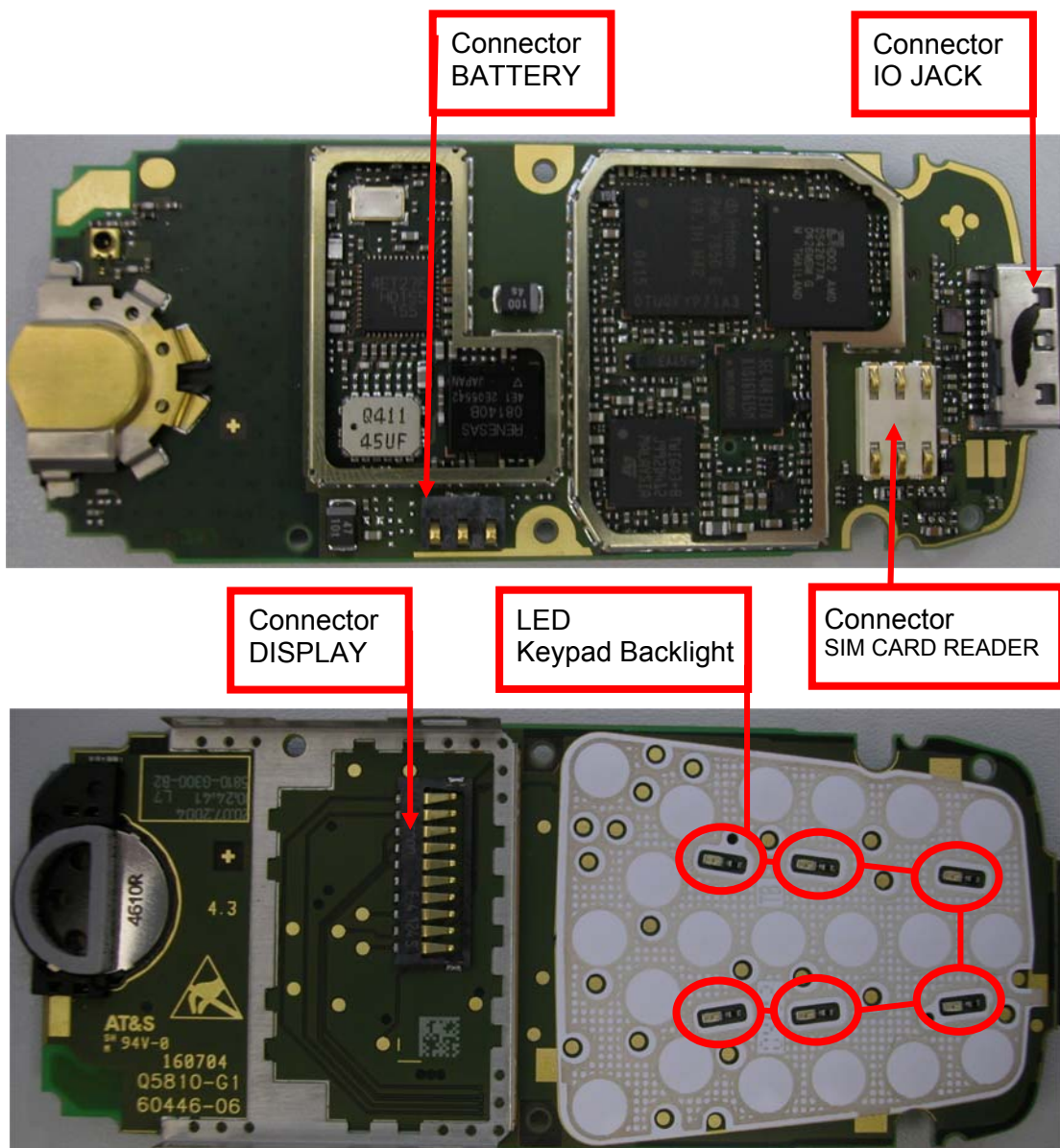
Table of Content

1	A62, A65, A70 & A75 board layout.....	4
2	Connector SIM Card Reader	5
3	Connector IO Jack.....	6
4	Connector Battery	7
5	Connector Display	8
6	LED_ KEYPAD_BACKLIGHT	9

1 A62, A65, A70 & A75 board layout

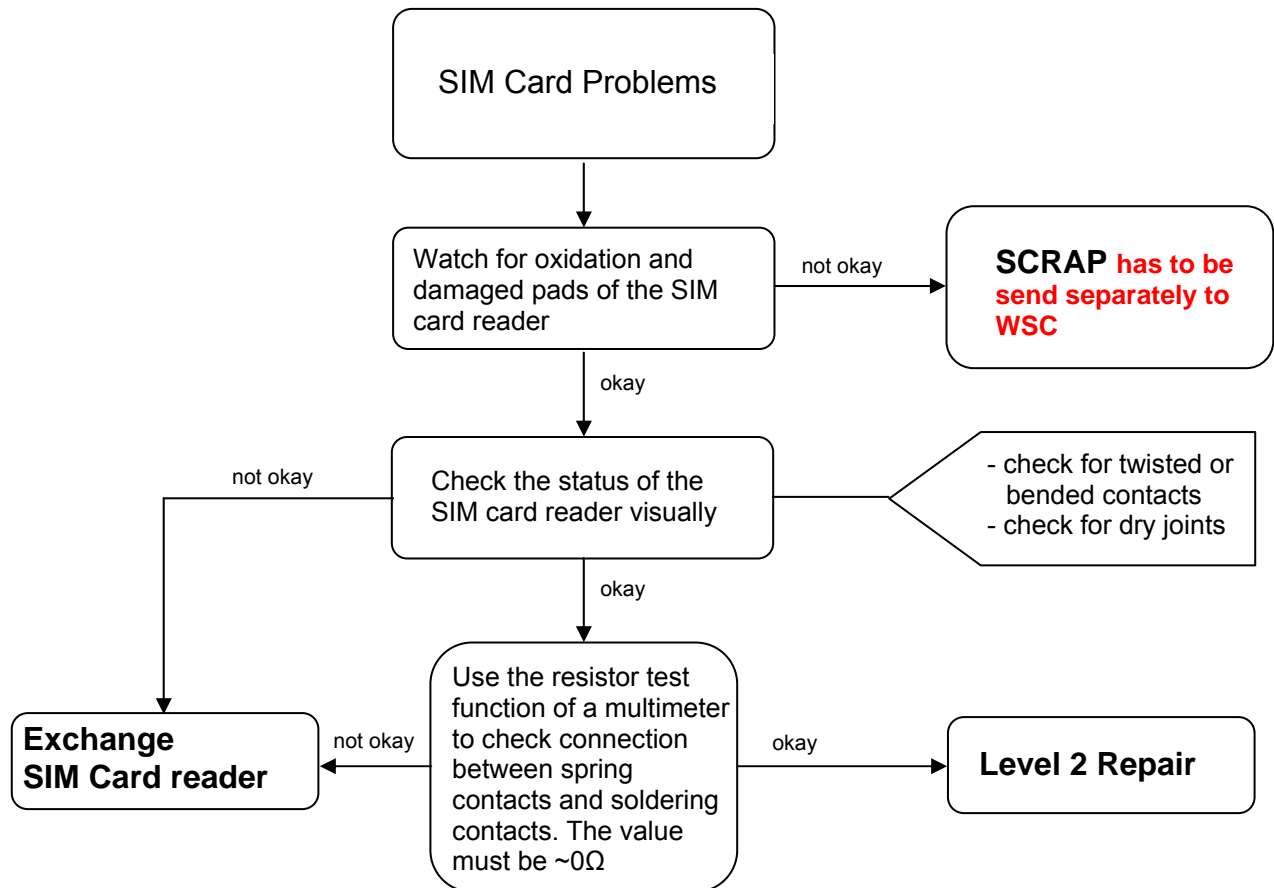
Jigs, Tools and Working materials for all described repairs:

- hot air blower
- soldering gun
- tweezers
- flux
- solder



2 Connector SIM Card Reader

Fault Symptoms	
Customer: Handset does not accept SIM card	GRT: SIM Card Problems



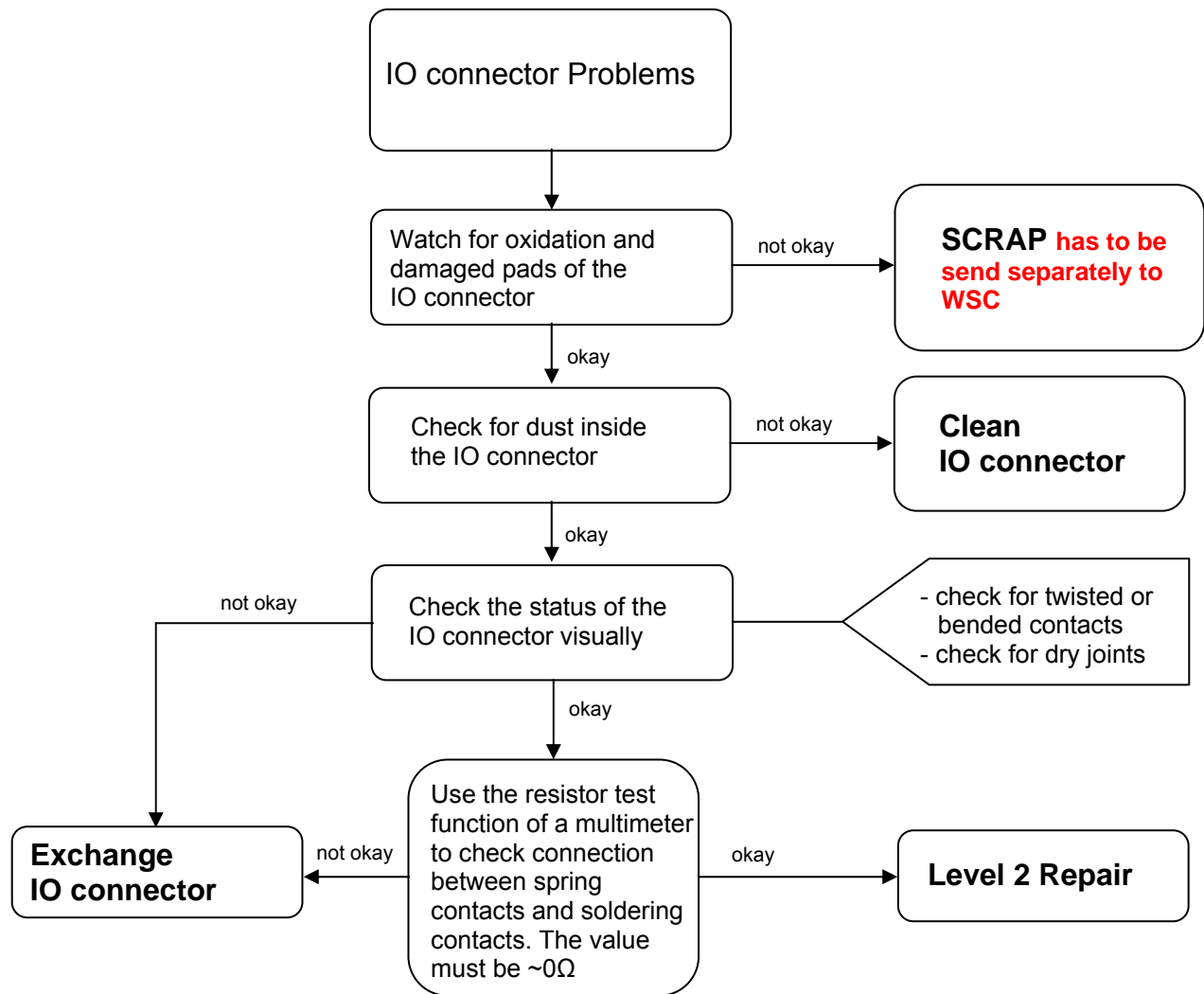
Connector SIM Card Reader

Use soldering iron to remove defective component. Avoid excessive heat! Watch surrounding components! Resolder new component afterwards.

E-commerce order number: L36334-Z97-C291
 E-commerce order name: CONNECTOR SIM CARD READER A55
 Soldering temperature: 240 - 255°C (For A70 and A75 ~ 360°C Tip temp.)
 IRIS Diagnose Code: 43300 Interface/SIM Cardreader/Mechanical Damage

3 Connector IO Jack

Fault Symptoms	
Customer: Charging Problems Problems with external loudspeaker or microphone when using a car kit Problems with accessories connected at the IO connector	GRT: No connection to GRT Tbd.



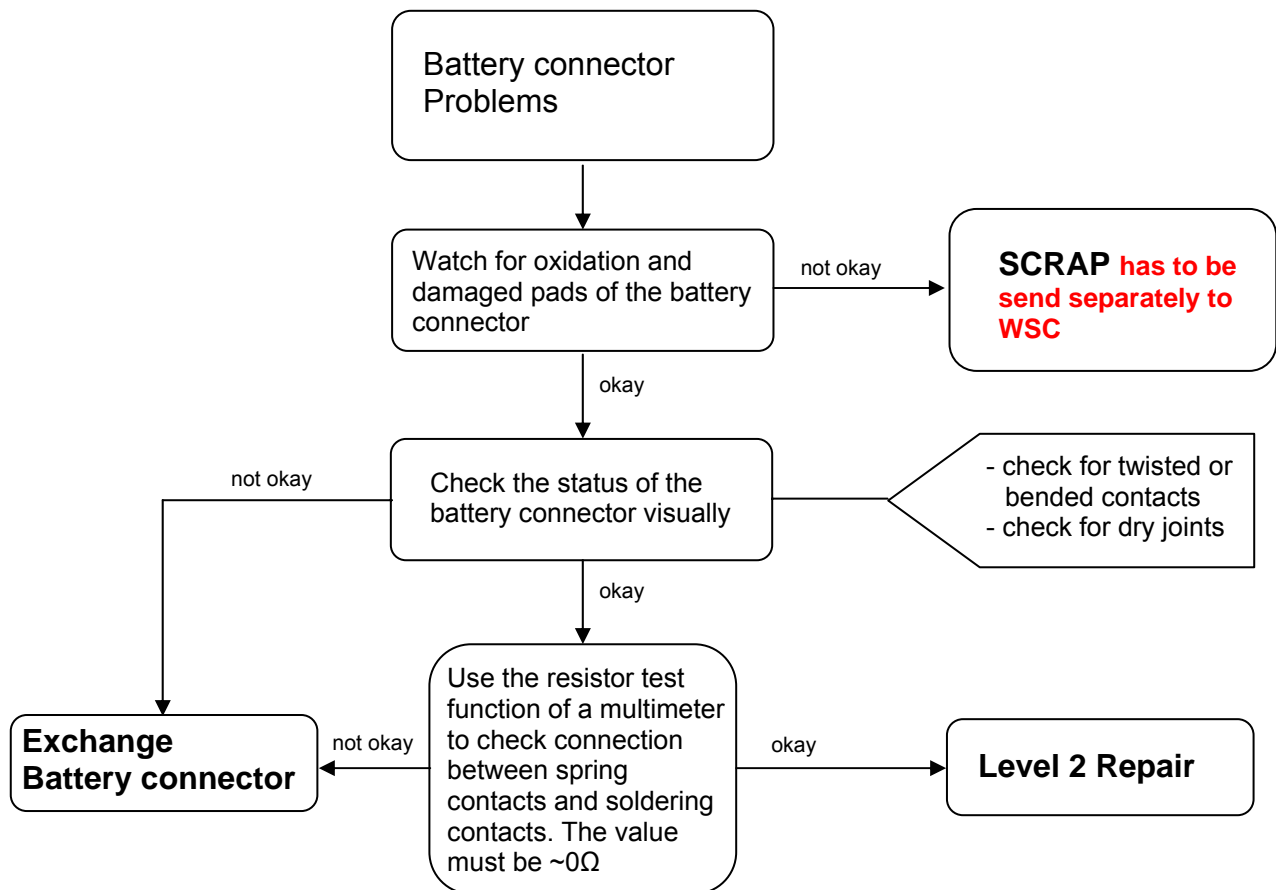
Connector IO Jack

Use soldering iron to remove defective component. Avoid excessive heat! Watch surrounding components! Resolder new component afterwards.

E-commerce order number: L36334-Z93-C303
 E-commerce order name: IO-JACK SLIM 12-POL
 Soldering temperature: 240 - 255°C (For A70 and A75 ~ 360°C Tip temp.)
 IRIS Diagnose Code: 46100 Interface/Charging Connector/Mechanical Damage
 47300 Interface/Data Interface/Mechanical Damage
 4B100 Interface/Headset Connector/Mechanical Damage

4 Connector Battery

Fault Symptoms	
Customer: Mobile does not switch on	GRT: No connection to GRT



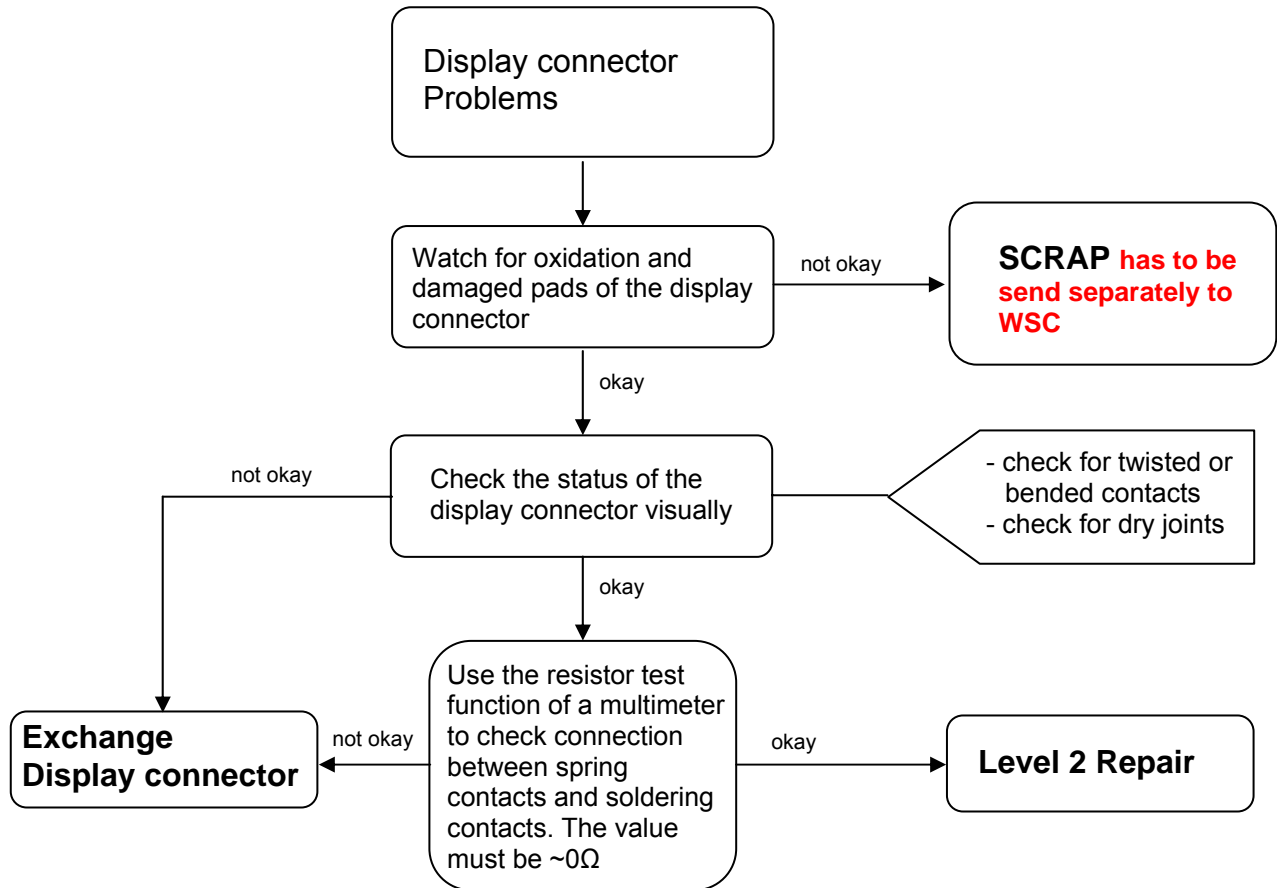
Connector BATTERY

Use hot air blower to remove defective component. Avoid excessive heat! Watch surrounding components!
 Resolder new component afterwards.

E-commerce order number: L36334-Z97-C213
 E-commerce order name: CONNECTOR BATTERY 3-POL
 Soldering temperature: 240 - 255°C (For A70 and A75 ~ 360°C Tip temp.)
 IRIS Diagnose Code: 13000 Battery/Mechanical Damage

5 Connector Display

Fault Symptoms	
Customer: Display problems, like missing lines or columns on the LCD or display contrast problems or illumination problems	GRT: Display problems



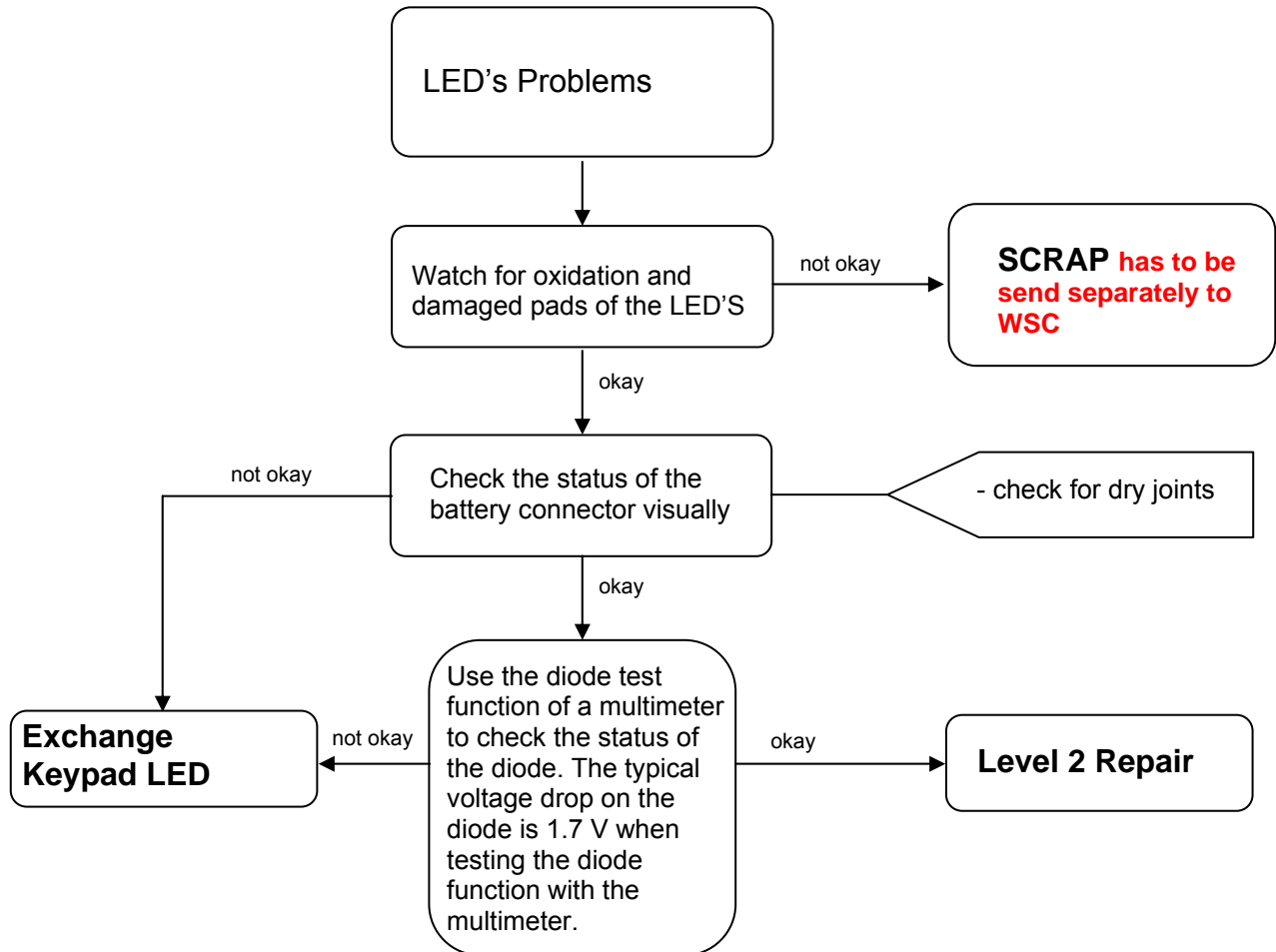
Connector DISPLAY

Use hot air blower to remove defective component. Avoid excessive heat! Watch surrounding components! Resolder new component afterwards.

E-commerce order number: L36334-Z97-C205
 E-commerce order name: CONNECTOR DISPLAY 10POL
 Soldering temperature: 240 - 255°C (For A70 and A75 ~ 360°C Tip temp.)
 IRIS Diagnose Code: 21000 Display / Performance
 22000 Display / Background Illumination

6 LED_KEYPAD_BACKLIGHT

Fault Symptoms	
Customer: Keypad BACKLIGHT illumination does not work	GRT: Tbd.



LED_KEYPAD_BACKLIGHT

Remove metal dome sheet before replace LED's Use soldering iron to remove defective component. Avoid excessive heat! Watch surrounding components! Resolder new component afterwards. The metal dome jip must be used to place the metal dome sheet.

E-commerce order number: L36 840-L2056-D670
 E-commerce order name: LED AMBER
 Soldering temperature: 240 - 255°C (For A70 and A75 ~ 360°C Tip temp.)
 IRIS Diagnose Code: 22000 Display / Background Illumination