

## Service Repair Documentation Level 2.5 for A5X, C5X



Release	Date	Department	Notes to change
1.0	10.05.2004	ICM MP CCQ GRM T	New document
1.1	03.06.2004	ICM MP CCQ GRM T	Changes in procedure
1.2	14.06.2004	ICM MP CCQ GRM T	A57 added, document redesigned
1.3	13.12.2004	Com MD CC GRM T	Phones added, document redesigned

## Introduction

This Service Repair Documentation is intended to carry out repairs on Siemens repair level 2.5. The described failures shall be repaired in Siemens authorized local workshops only.

All repairs have to be carried out in an ESD protected environment and with ESD protected equipment/tools. For all activities the international ESD regulations have to be considered.

Assembling/disassembling has to be done according to the latest Level 2 repair documentation. It has to be ensured that every repaired mobile Phone is checked according to the latest released General Test Instruction document (both documents are available in the Technical Support section of the C-market).

Check at least weekly C-market for updates and consider all related Customer Care Information

A51	Partnumber on IMEI label:	S30880-S6210-#xxx
A52	Partnumber on IMEI label:	S30880-S6250-#xxx
A53	Partnumber on IMEI label:	S30880-S6290-#xxx
A55	Partnumber on IMEI label:	S30880-S5750-#xxx
A56	Partnumber on IMEI label:	S30880-S5320-#xxx
A57	Partnumber on IMEI label:	S30880-S5830-#xxx
C55	Partnumber on IMEI label:	S30880-S5600-#xxx
C56	Partnumber on IMEI label:	S30880-S5300-#xxx

, while # may be any letter (A-Z) and xxx may be any number from 100, 101, 102....

If you have any questions regarding the repair procedures or technical questions spare not hesitate to contact our technical support team in Kamp-Lintfort, Germany:

Tel.: +49 2842 95 4666  
Fax: +49 2842 95 4302  
e-mail: [st-support@klf.siemens.de](mailto:st-support@klf.siemens.de)

**Table of Content**

1 A5X, C5X board layout.....4

2 Connector SIM Card Reader .....6

3 Connector IO Jack.....7

4 Connector Battery .....8

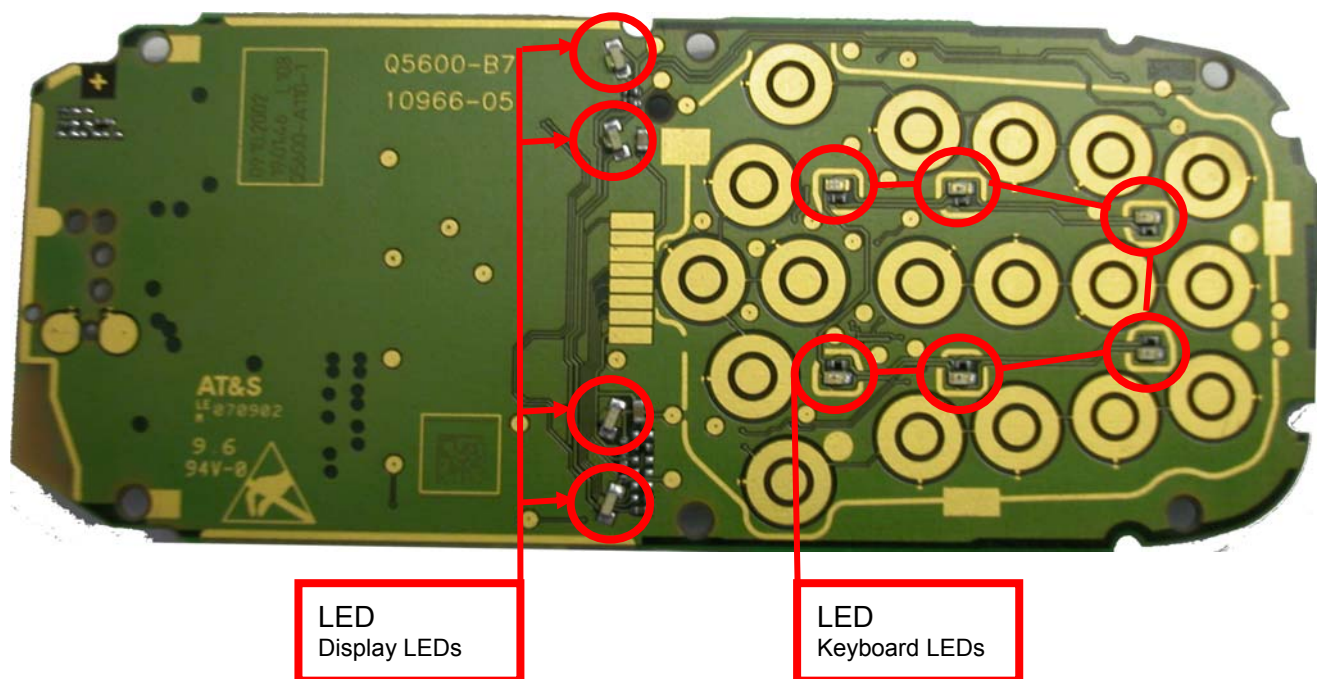
5 Keyboard - display LEDs .....9

6 Connector RF (only C5X) ..... 10

## 1 A5X, C5X board layout

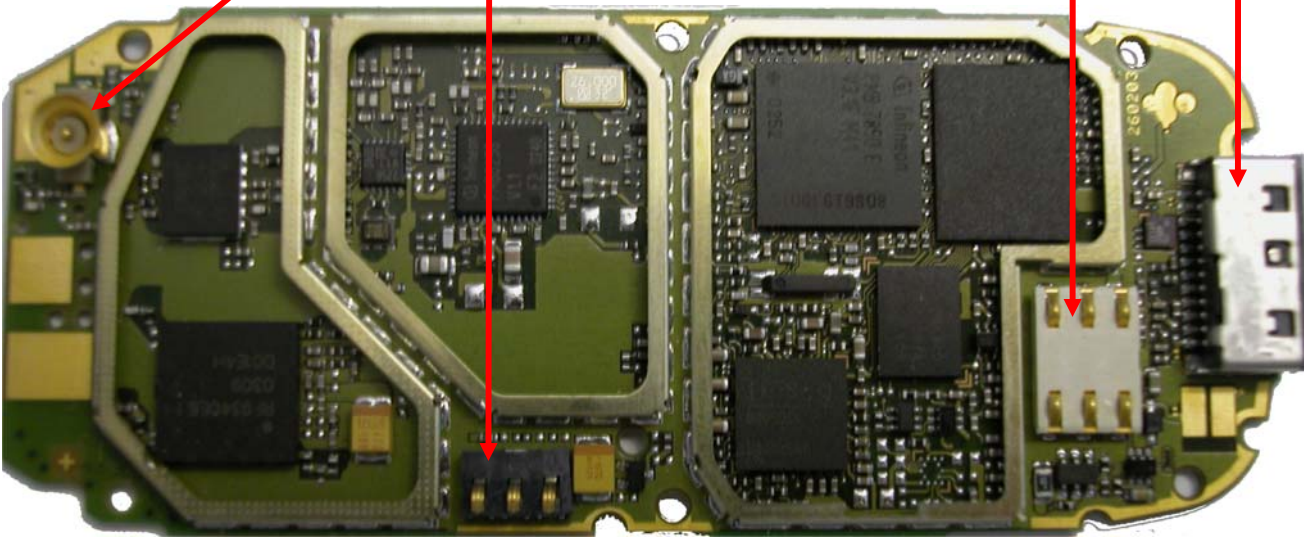
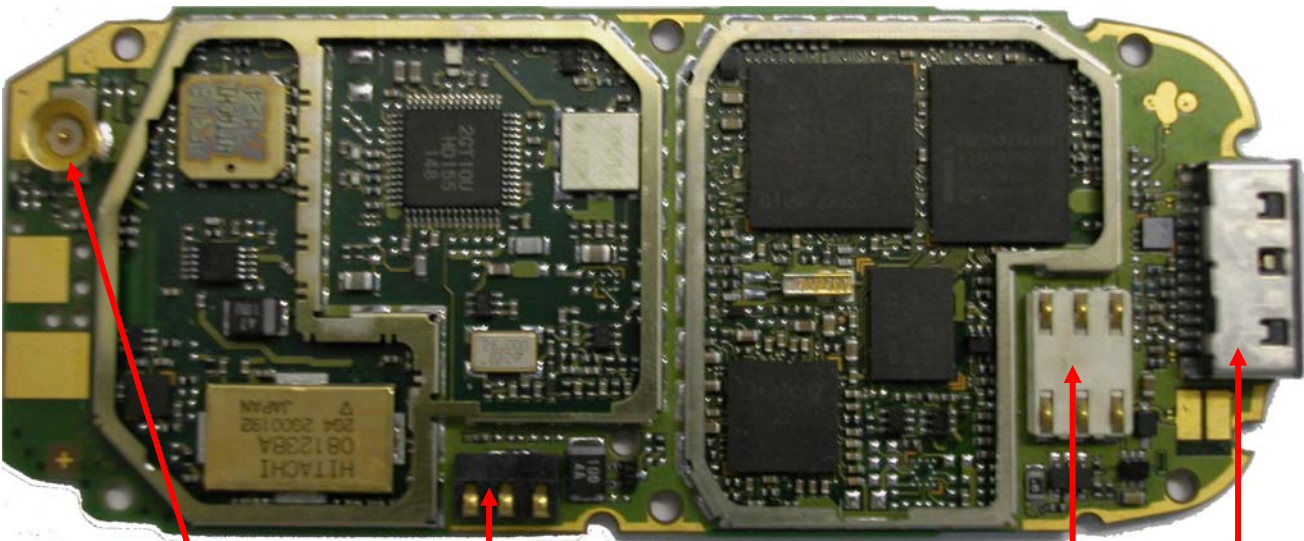
Jigs, Tools and Working materials for all described repairs:

- hot air blower
- soldering gun
- tweezers
- flux
- solder





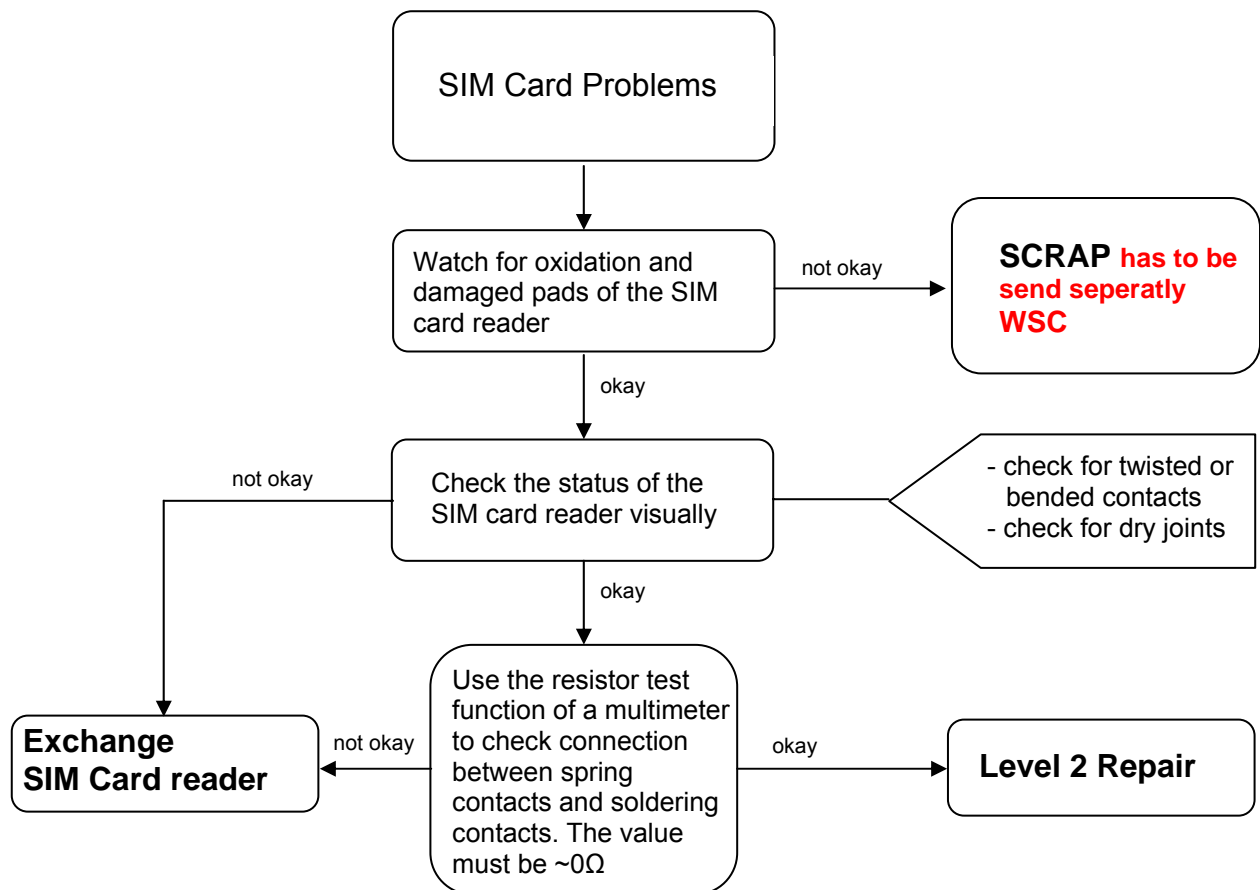
Hitachi layout



Infineon layout

## 2 Connector SIM Card Reader

Fault Symptoms	
Customer: Handset does not accept SIM card	GRT: SIM Card Problems



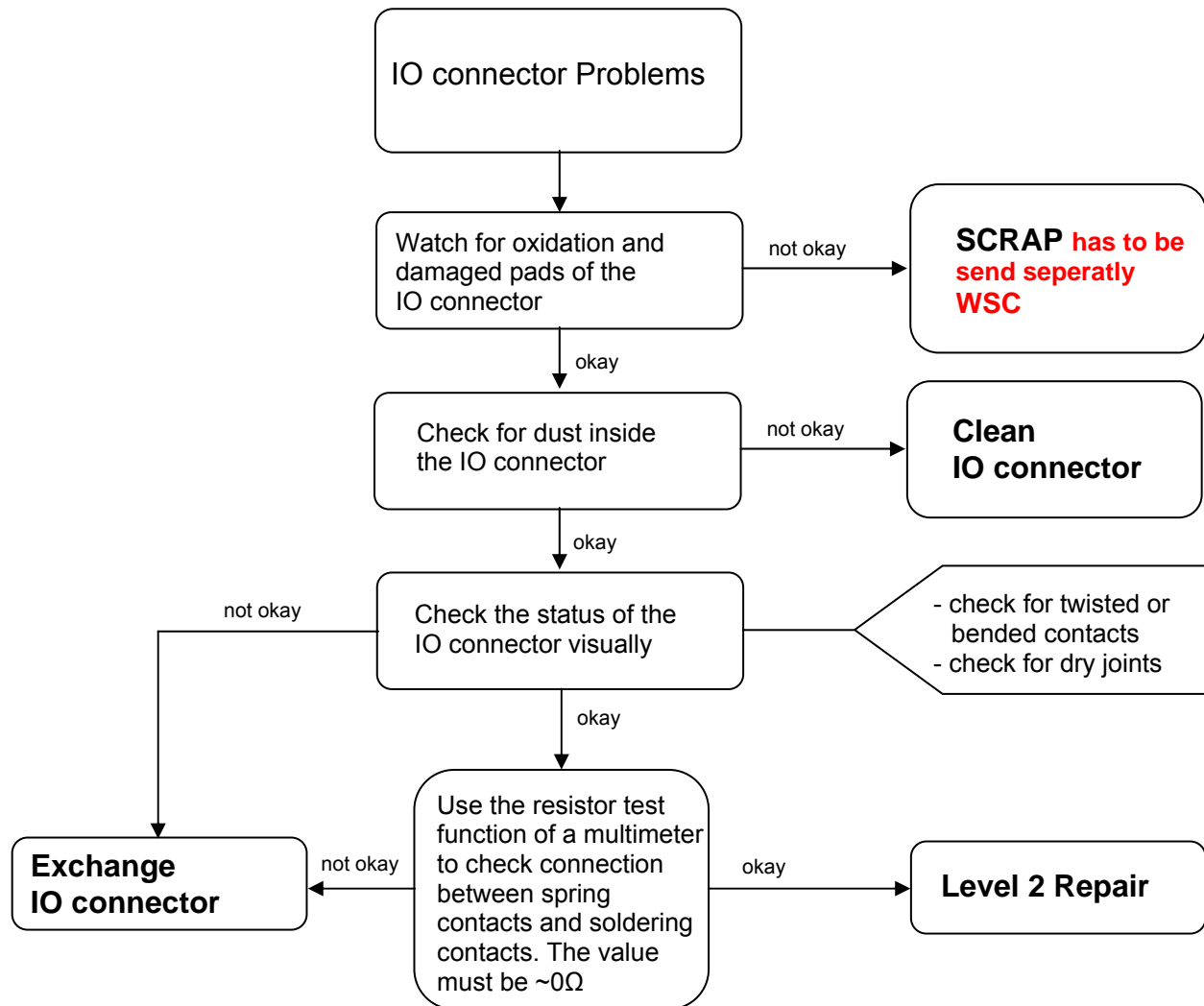
### Connector SIM Card Reader

Use soldering iron to remove defective component. Avoid excessive heat! Watch surrounding components! Resolder new component afterwards.

E-commerce order number: L36334-Z97-C204  
 Soldering temperature: 240 - 255°C  
 IRIS Diagnose Code: 43300 Interface/SIM Cardreader/Mechanical Damage

## 3 Connector IO Jack

Fault Symptoms	
Customer: Charging Problems Problems with external loudspeaker or microphone when using a car kit Problems with accessories connected at the IO connector	GRT: No connection to GRT Tbd.



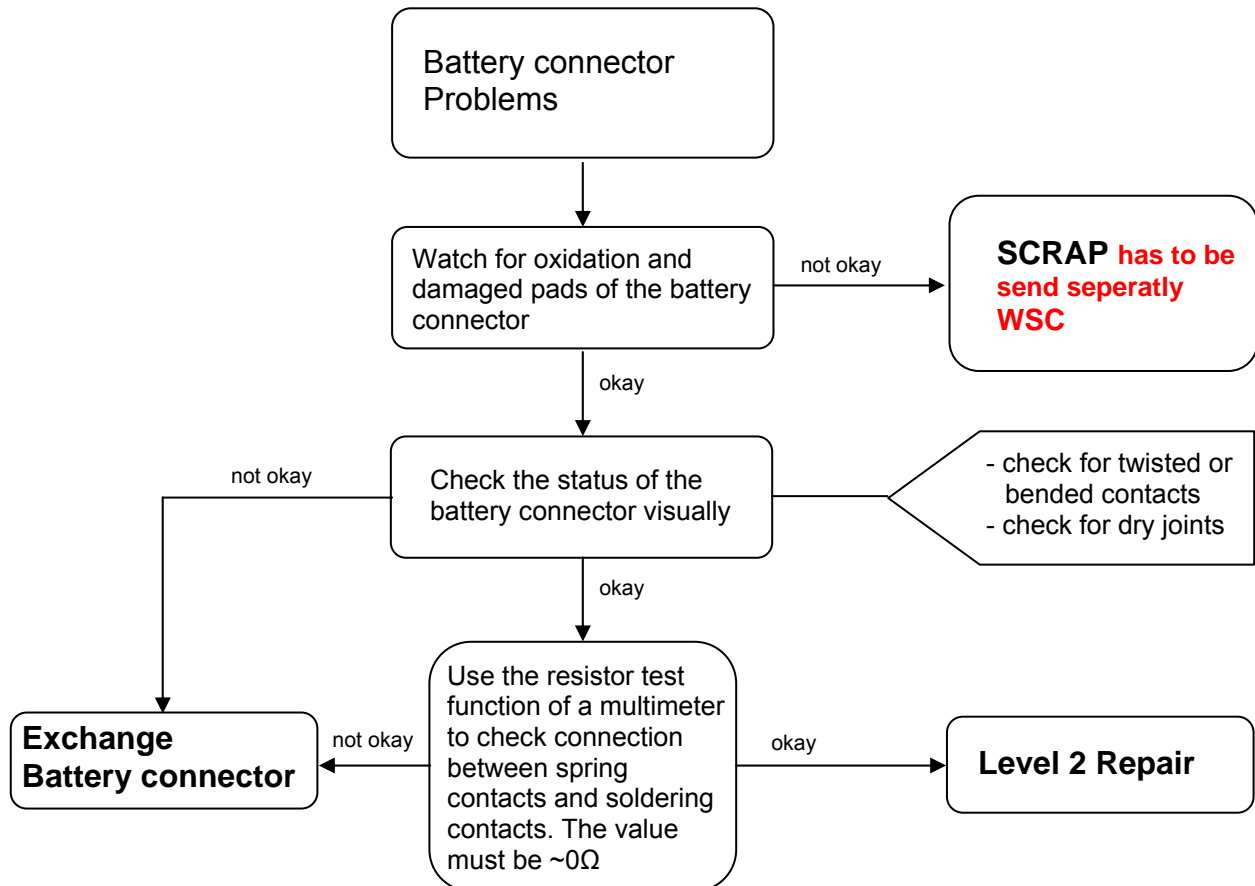
### Connector IO Jack

Use soldering iron to remove defective component. Avoid excessive heat! Watch surrounding components! Resolder new component afterwards.

E-commerce order number: L36334-Z93-C303  
 Soldering temperature: 240 - 255°C  
 IRIS Diagnose Code: 46100 Interface/Charging Connector/Mechanical Damage  
 47300 Interface/Data Interface/Mechanical Damage  
 4B100 Interface/Headset Connector/Mechanical Damage

## 4 Connector Battery

Fault Symptoms	
Customer: Mobile does not switch on	GRT: No connection to GRT



### Connector BATTERY

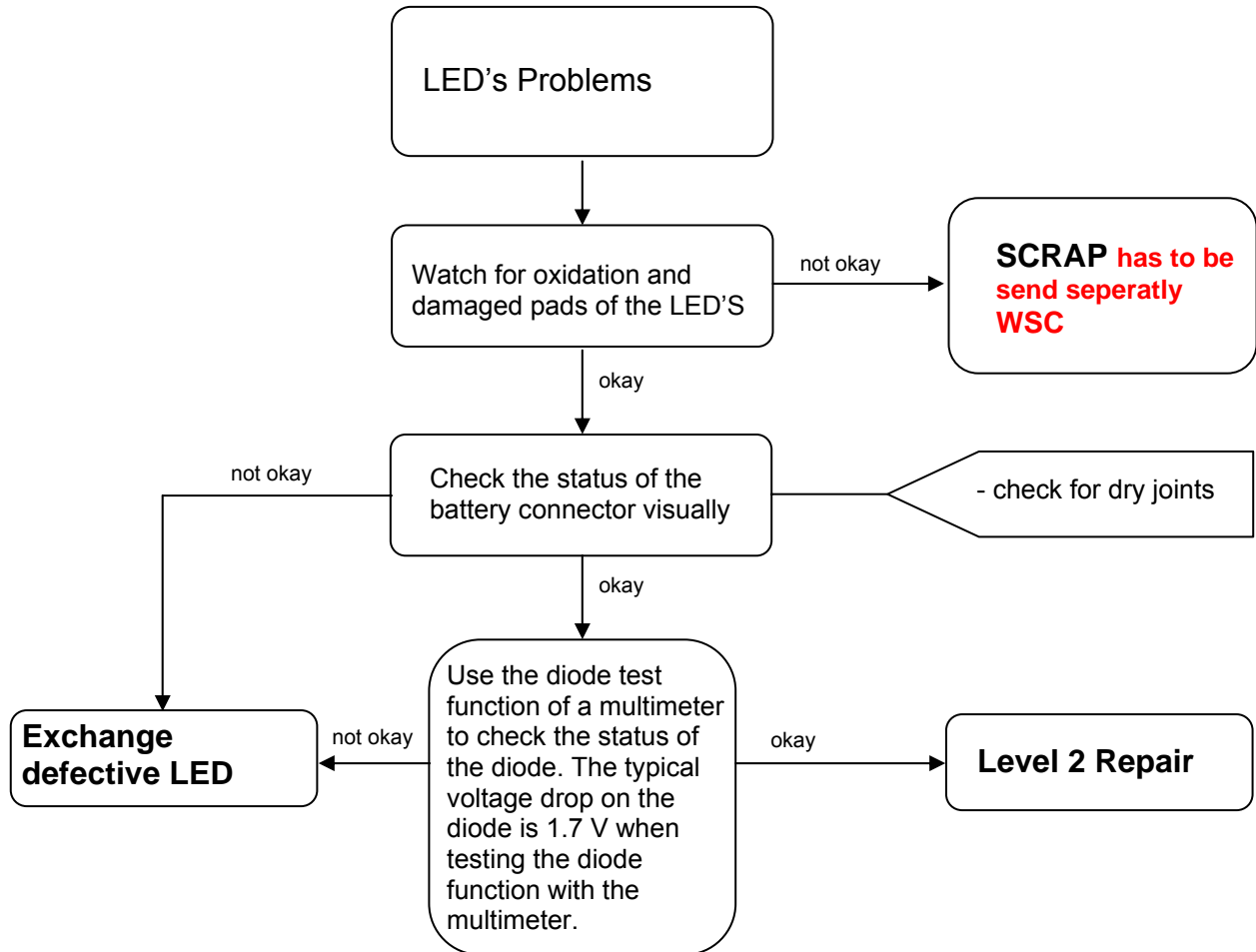
Use hot air blower to remove defective component. Avoid excessive heat! Watch surrounding components! Resolder new component afterwards.

E-commerce order number: L36334-Z97-C213  
 Soldering temperature: 240 - 255°C  
 IRIS Diagnose Code: 13000 Battery/Mechanical Damage



## 5 Keyboard - display LEDs

Fault Symptoms	
Customer: Illumination does not work	GRT: Tbd.



### KEYBOARD LEDs

Use soldering iron to remove defective component. Avoid excessive heat! Watch surrounding components! Resolder new component afterwards.

E-commerce order number: L36840-L2056-D670  
 Soldering temperature: 240 - 255°C  
 IRIS Diagnose Code: 22000 Display / Background Illumination

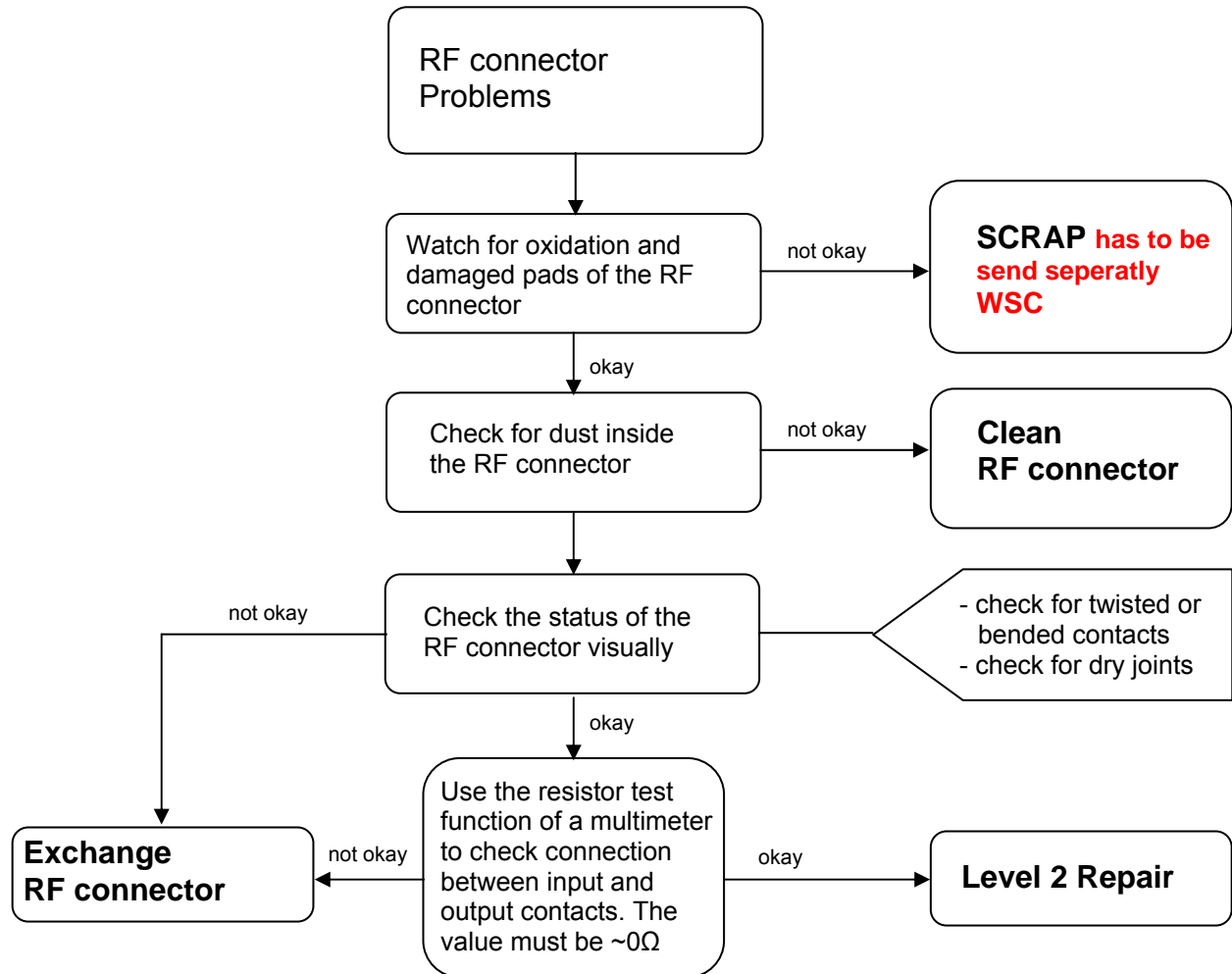
### DISPLAY LEDs

Use soldering iron to remove defective component. Avoid excessive heat! Watch surrounding components! Resolder new component afterwards.

E-commerce order number: L36840-L2055-D670  
 Soldering temperature: 240 - 255°C  
 IRIS Diagnose Code: 22000 Display / Background Illumination

## 6 Connector RF (only C5X)

Fault Symptoms	
Customer: Network search No location update possible	GRT: Failure by TX/RX measurements No location update possible



### Connector RF

Use hot air blower to remove defective component. Avoid excessive heat! Watch surrounding components! Resolder new component afterwards.

E-commerce order number: L36334-Z93-C272

Soldering temperature: 240 - 255°C

IRIS Diagnose Code:

81100 Radio / No Contact / Int. Antenna

82100 Radio / Low Receiving Signal / Int. Antenna

83100 Radio / Dropped Calls / Int. Antenna

84100 Radio / Call Setup / Int. Antenna

81200 Radio / No Contact / Ext. Antenna

82200 Radio / Low Receiving Signal / Ext. Antenna

83200 Radio / Dropped Calls / Ext. Antenna

84200 Radio / Call Setup / Ext. Antenna