

FIELD SERVICE BULLETIN

FSB Number: LVCCFSB2004-119
Author: Tony Bryan
Date: June 8th, 2004
Total No. of Pages: 3
Subject: **GSM V600 - Housing Revisions (Compatibility)**
Model Affected: GSM V600
Level of Repair: 2

Problem

This is an informational bulletin detailing some recent improvements that have been made to the V600 housings. The purpose of this bulletin is to assist the field with compatibility issues and/or use questions when replacing the V600 housings in the field.

The 0188416N01 Base F-Hsg has been modified. The new 0188416N02 part number replaces the plastic flip stop (two raised portions of the F-Hsg that make contact with the flip at the top of the CLI Chrome Ring) with a new flip stop design and a Sentoprene Flip Stop Pad (similar to V300/V500). Please see images below. This was a change that had been planned for V600, since Oct. 03, from a pre-launch RASA Issue highlighted in ALT Testing.

Note: This pre-launch issue has not been highlighted in the field with the various other CLI Lens issues that we do have. The new flip stop does not reduce the CLI Lens issues that have been highlighted in the field. Please reference [LVCCFSB2004-63 \(Rev. A\)](#) for more details on these issues.



“Old” 0188416N01 F-Hsg



“New” 0188416N02 F-Hsg

The 0188441N01 Base R-Hsg has been modified. The new 0188441N02 part number has additional clearance for the new flip stop design, added RF Coupler for improved RF Stability, and some housing fit features to the screw bosses. See images below.



"Old" 0188441N01 R-Hsg



"New" 0188441N02 R-Hsg

Solution

Please reference the compatibility matrix below when replacing these part in the field.

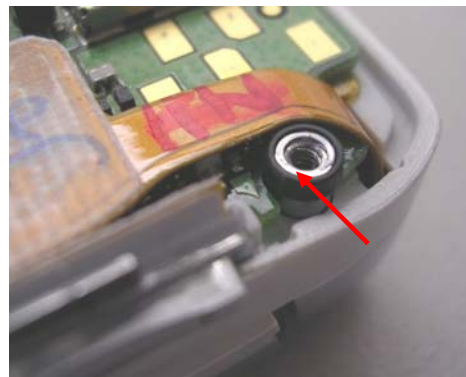
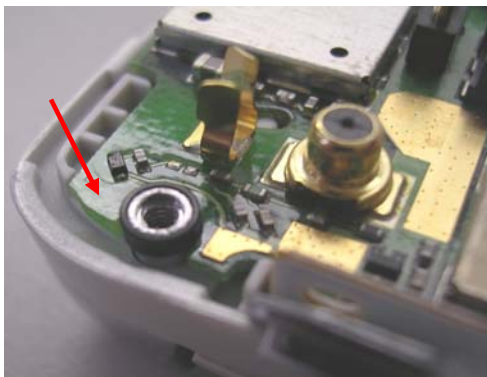
V600 Base Housing Compatibility Matrix

		0188441N01				0188441N02					
		1588190N01 (Back Hsg)									
0188416N01	1588189N01 (Keypad Hsg)	O	A	B	C	D	E	F	G	H	
		Yellow	Yellow	Yellow	Yellow	Yellow	Green	Green	Green	Green	Green
		Yellow	Yellow	Yellow	Yellow	Yellow	Green	Green	Green	Green	Green
		Yellow	Yellow	Yellow	Yellow	Yellow	Green	Green	Green	Green	Green
		Red	Red	Red	Red	Red	Green	Green	Green	Green	Green
		Red	Red	Red	Red	Red	Green	Green	Green	Green	Green

- = **DO NOT** use rev 1588189N01 rev D or E keypad housings with this set of 1588190N01 Back housings.
- NO SPACER = This combination of keypad and back housings **DO NOT USE** a 4387503Y01 collar spacer.
- SPACER REQ'D = This combination of keypad and back housings **MUST USE** a 4387503Y01 collar spacer.

1588189N01 rev D is where the flipstop (7587409Y01 added) changes were added as well as housing fit features.
1588190N01 rev E is where the flipstop clearance, Rf coupling (4187433Y01 added) & housing fit features were added.

Please see images below showing the proper placement of the 4387503Y01 collar spacer, onto the knuckles, when using the 0188441N01 Base R-Hsg.





Consumer Solutions & Support
US Competency Center
600 North US Highway 45
Libertyville, Illinois 60048
Website: gs.mot.com

Service Action

Customer Returns:

When servicing GSM V600 customer returns, that require the replacement of either the Base F-Hsg or Base R-Hsg, then:

1. Verify the part numbers of the original parts on the returned units
2. Use the Compatibility Matrix above to determine what part should be used for the replacement and what additional part may need to be replaced to avoid compatibility issues.

Service Inventory:

Use the existing inventory of the 0188416N01 Base F-Hsg and 0188441N01 Base R-Hsg to depletion and then replace with the improved 0188416N02 Base F-Hsg and 0188441N02 Base R-Hsg.