



Informational-FIELD SERVICE BULLETIN

FSB Number: LVCCFSB2004-84 (Rev. C)
 Author: Tony Bryan
 Date: June 02, 2005
 Total No. of Pages: 4
 Subject: GSM Triplets – Display Compatibility
 Phone Models: GSM V300, V303, V400, V500, V505, V525, V600
 Level of Repair: 3

Problem

This is an informational bulletin detailing the different types of TFT Display Modules currently being used on GSM Triplets Products. The purpose of the bulletin is to assist with compatibility issues when replacing the display module on customer return units in the field.

TF (Transflective) Type Displays: V300 and V600 Only!

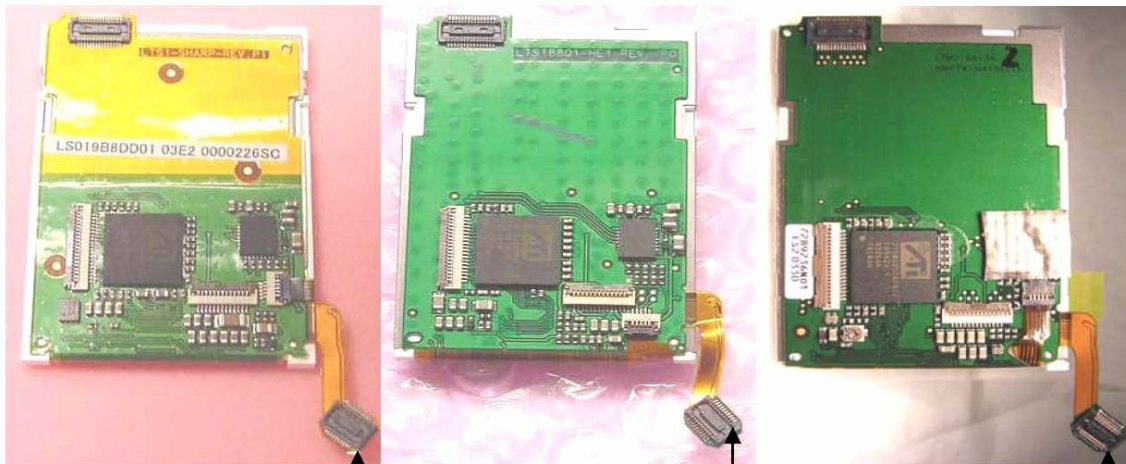
Part Number	Vendor	SW Versions	HW Versions	Notes
7288330N02	Samsung	All Operator approved Releases	V300/V600	
7288330N03	Samsung	All Operator approved Releases	V300/V600	Replaces N02: Fix for Viewing with Polarized Sunglasses
7288330N04	Samsung	All Operator approved Releases	V300/V600	Replaces N02 and N03: Fix to support Agilent camera
7289236N01	Toshiba	All Operator approved Releases	V300/V600	
7289236N02	Toshiba	All Operator approved Releases	V300/V600	Replaces N01
7289236N03	Toshiba	All Operator approved Releases	V300/V600	Replaces N01 & N02; Fix to support Agilent camera
7289235N01	Sharp	0B.08.A5R or 0B.09.1CR and later	V300/V600	Not to be used on phones operating in the 850MHz Band
7289235N02	Sharp	0B.08.A5R or 0B.09.1CR and later	V300/V600	Replaces N01: Fix to support Agilent camera. Not to be used on phones operating in the 850MHz Band
7287949Y01	Sharp	0B.09.38R and later	V300/V600	Replaces N02: Cost Reduction Driver IC (Ramless) Not to be used on phones operating in the 850MHz Band



MOTOROLA

**Consumer Solutions & Support
US Competency Center
600 North US Highway 45
Libertyville, Illinois 60048
Website: gs.mot.com**

All of the TF Display Modules listed above will require the Fun Light Flex to be removed prior to being used with V300 Models. The flex cable needs to be cut along the edge of the fiberglass board. The recommended tool to cut the flex away from the display's PCB is a pair of rubber-handled side cutters. The flex should be trimmed, as close as possible to the edge of the fiberglass board, as excess overhang of the flex could possibly short to the chrome edge of the module.



Sharp TF Display Module

Samsung TF Display Module

Toshiba TF Display Module

Note: Fun Light Flex- Removed for use on V300



MOTOROLA

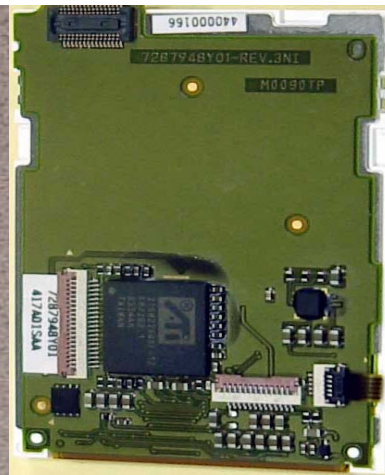
Consumer Solutions & Support
US Competency Center
600 North US Highway 45
Libertyville, Illinois 60048
Website: gs.mot.com

TM (Transmissive) Displays: V303, V400, V505, V500/V525 Only!

Part Number	Vendor	SW Versions	HW Versions	Notes
7289238N02	Samsung	All Operator approved Releases	V303/V400/V500/V505/V525	
7289238N03	Samsung	All Operator approved Releases	V303/V400/V500/V505/V525	Replaces N02: Fix to support Agilent camera
7287946Y01	Samsung VE1	0B.09.2FR_A1 and 0B.09.37R or later	V303/V400/V500/V505/V525	Replaces N02 & N03: Cost Reduction Driver IC (Ramless)
7287948Y01	Sharp TM Type	0B.09.4AR and 0B.09.4DR or later	V303/V400/V500/V505/V525	Cost Reduction Driver IC (Ramless) Not to be used on phones operating in the 850MHz Band



Samsung TMR Display Module



Sharp TM Display Module



MOTOROLA

Consumer Solutions & Support
US Competency Center
600 North US Highway 45
Libertyville, Illinois 60048
Website: gs.mot.com

Solution

Please refer to the information provided above when replacing the display module on any GSM Triplets Model.

Field Service Action

Customer Returns:

When servicing affected models of GSM Triplets customer returns that require the replacement of the display module:

1. First, verify the phone model. Then, use the information provided above to determine which display module should be used for replacement.
2. Check to determine if the camera in the phone is an Agilent camera module (ADCM printed on the flex tail near connector). See image below for reference.
 - a. If Agilent, replace only with modules that support Agilent per chart above.
 - b. For all other cameras, existing display module stock may be used to



Agilent Camera Markings (ADCM)

Service Inventory:

TF (Transflective) Type Displays: V300 and V600

Use the Samsung 7288330N04 part as primary for field replacement.

The 7289236N03 Toshiba and 7287949Y01 Sharp TF Display can be used as alternates on V300 and V600.

NOTE: Sharp Displays are not compatible with phones operating in the 850MHz Band.

TR (Transmissive) Type Displays: V303, V400, V505, V500/V525

Use the Samsung 7287946Y01 part as primary for field replacement.

The 7287948Y01 Sharp TM Display can be used as an alternate on V303, V400, V505, and V500/V525.

NOTE: Sharp Displays are not compatible with phones operating in the 850MHz Band.