

FIELD SERVICE BULLETIN

FSB Number: LVCCFSB2004-84 (Rev A)
 Author: Tony Bryan
 Date: May 19th, 2004
 Total No. of Pages: 3
 Subject: **GSM Triplets – Display Compatibility**
 Model Affected: GSM V300, V303, V400, V500, V525, V600
 Level of Repair: 3

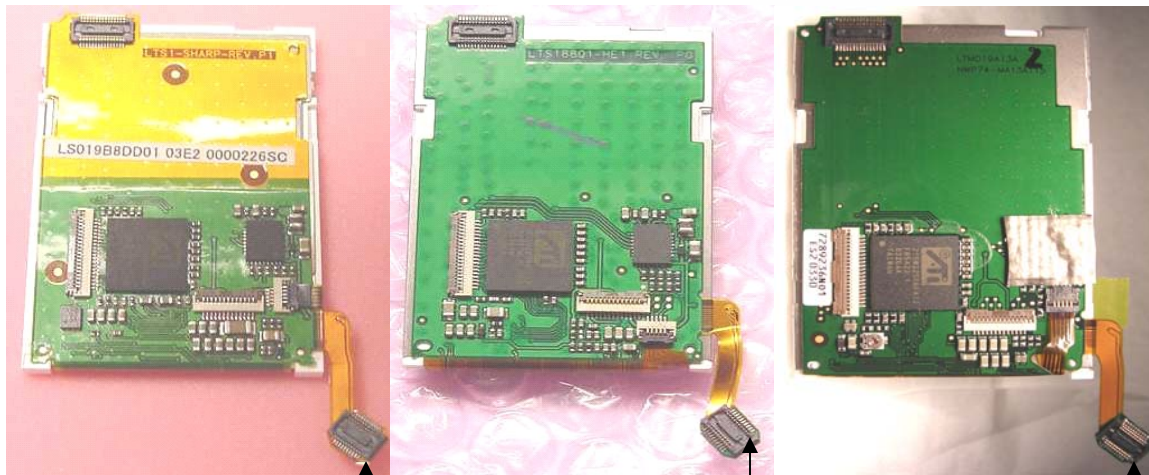
Problem

This is an informational bulletin detailing the different types of TFT Display Modules currently being used on GSM Triplets Products. The purpose of the bulletin is to assist with compatibility issues when replacing the display module on customer return units in the field.

TF (Transflective) Type Displays: V300 and V600 Only!

Part Number	Vendor	SW Versions	HW Versions	Notes
7288330N02	Samsung	All Operator approved Releases	V300/V600	
7288330N03	Samsung	All Operator approved Releases	V300/V600	Replaces N02; Fix for Viewing with Polarized Sunglasses
7288330N04	Samsung	All Operator approved Releases	V300/V600	Replaces N02 and N03; Fix to support Agilent camera
7289236N01	Toshiba	All Operator approved Releases	V300	
7289236N02	Toshiba	All Operator approved Releases	V300	Replaces N01
7289236N03	Toshiba	All Operator approved Releases	V300	Replaces N01 and N02; Fix to support Agilent camera
7289235N01	Sharp	0B.08.A5R or 0B.09.1CR and later	V300/V600	Not to be used on V300 phones operating in the 850MHz Band
7289235N02	Sharp	0B.08.A5R or 0B.09.1CR and later	V300/V600	Replaces N01; Fix to support Agilent camera. Not to be used on V300 phones operating in the 850MHz Band

All of the TF Display Modules listed above will require the Fun Light Flex to be removed prior to being used with V300 Models. The flex cable needs to be cut along the edge of the fiberglass board. The recommended tool to cut the flex away from the display's PCB is a pair of rubber-handled side cutters. The flex should be trimmed, as close as possible to the edge of the fiberglass board, as excess overhang of the flex could possibly short to the chrome edge of the module.



Sharp TF Display Module

Samsung TF Display Module

Toshiba TF Display Module

Note: Fun Light Flex- Removed for use on V300

TMR (Transmissive Micro Reflective) Displays: V303, V400, V500, V525 Only!

Part Number	Vendor	SW Versions	HW Versions	Notes
7289238N02	Samsung	All Operator approved Releases	V303/V400/V500/V525	
7289238N03	Samsung	All Operator approved Releases	V303/V400/V500/V525	Fix to support Agilent camera. Replaces N02
7287946Y01	Samsung	0B.09.37R or later	V303/V400/V500/V525	Cost Reduction Driver IC (Ramless). Replaces N03



Samsung TMR Display Module

Solution

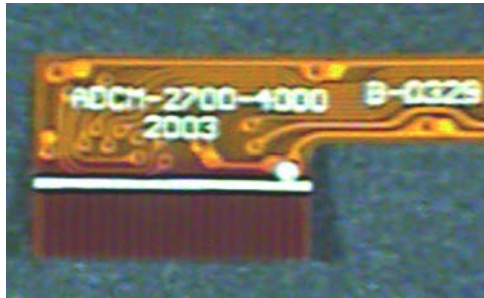
Please refer to the information provided above when replacing the display module on any GSM Triplets Model.

Service Action

Customer Returns:

When servicing affected models of GSM Triplets customer returns that require the replacement of the display module:

1. First, verify the phone model. Then, use the information provided above to determine which display module should be used for replacement.
2. Check to determine if the camera in the phone is an Agilent camera module (ADCM printed on the flex tail near connector). See image below for reference.
 - a. If Agilent, replace only with modules that support Agilent per chart above.
 - b. For all other cameras, existing display module stock may be used to depletion.



Agilent Camera Markings (ADCM)

Service Inventory:

TF (Transflective) Type Displays: V300 and V600

Use existing inventory of the Samsung 7288330N02 and N03 TF Display to depletion and replace with the 7288330N04 part with added support for the Agilent camera. The 7289235N02 Sharp TF Display can be used on all V600 units and V300 units that are not using the 850MHz Band.

TMR (Transmissive Micro Reflective) Type Displays: V303, V400, V500, and V525

Use inventory of the Samsung 7289238N02 and N03 to depletion and then replace with the new Samsung 7287496Y01 part.