



FIELD SERVICE BULLETIN

FSB Number: LVCCFSB2003-98 (Rev. A)
Author: Tony Bryan
Date: December 03, 2003
Total No. of Pages: 3
Subject: **Triplets PA Replacement – Eagle IC**
Model Affected: V300, V303, V400, V500, V525, V600
Level of Repair: 3/4

Problem

Due to design differences between the SPS and SKYWORKS Eagle IC it was necessary to load a specific PA Phasing table for each supplier. In addition, there are component changes in the antenna matching circuits to achieve optimal RF Performance from each type of PA.

Because of the changes described above, it was necessary to create a separate part number for each supplier and specify a supplier to be used for each Phone Model Type. Please see chart below.

Phone Model Type	PA To Be Placed	FL100 To Be Placed
V300, V303, V400, V600	5189818N01 SKYWORKS Eagle IC	9188668L04 Epcos or SawTek
**V500, V525	5109908K81 SPS Eagle IC	9188668L06 Epcos

****NOTE:** Due to delays in part qualification with the SPS Eagle IC, it was necessary to utilize the Skyworks PA on initial production builds of the V500 and V525. Currently the Skyworks Eagle IC is the only part being placed for all phone model types. V500/V525 is scheduled to cut over to the SPS Eagle IC in the late December timeframe.

Solution

Only replace the U50 Eagle IC with part from the same supplier as the original part removed. When replacing the FE Module FL100, please note which PA is placed as the 9188668L04 SawTek part is not compatible with the 5109908K81 SPS Eagle IC.



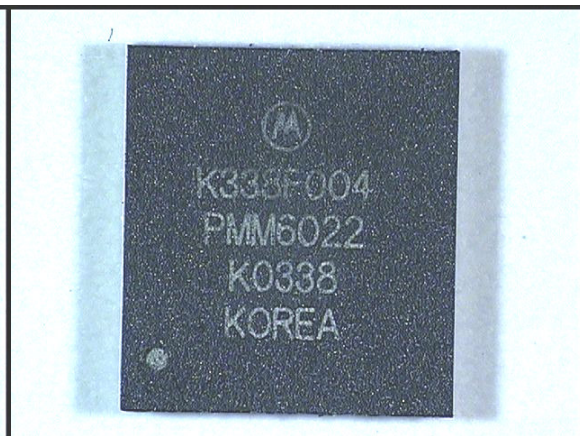
Field Service Action

Customer Returns:

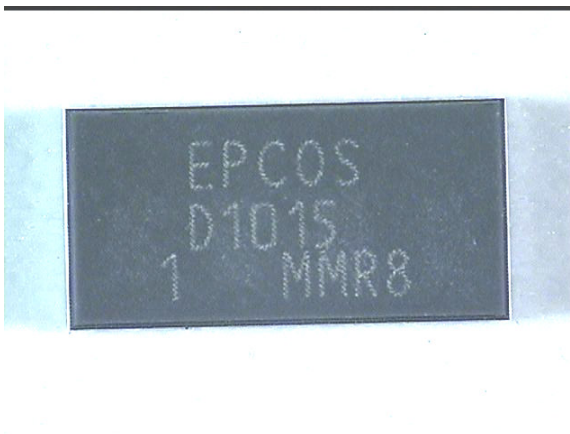
When replacing the U50 Eagle IC (PA) on Triplets products, use only parts from the same supplier. When replacing the FL100 FE Module, reference the chart above to ensure compatibility with the PA placed on the board. Use the images below to locate and identify the supplier of the Eagle IC placed.



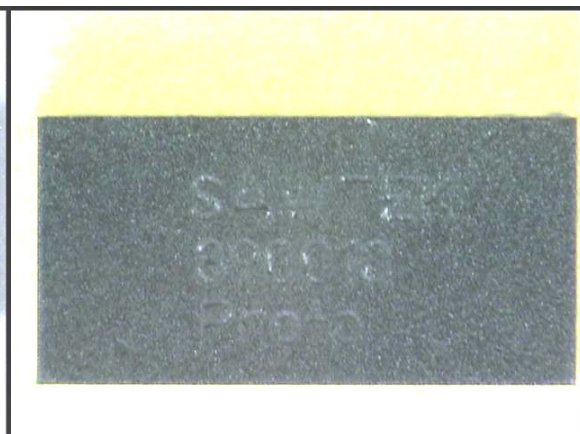
5189818N01 Skyworks Eagle IC



5109908K81 SPS Eagle IC



9188668L06 EPCOS FE Module



9188668L04 SawTek FE Module



MOTOROLA
intelligence everywhere™

Consumer Solutions & Support
US Competency Center
600 North US Highway 45
Libertyville, Illinois 60048
Website: gs.mot.com

Service Inventory:

Please stock the 5189818N01 SKYWORKS Eagle IC as well as the 5109908K81 SPS Eagle IC, **when available**, for use on Triplets Products.

Please stock the 9188668L06 EPCOS FE Module as well as the 9188668L04 SawTek FE Module for use on Triplets Products.

Service Entry Code

Please ensure that repairs of this type are logged on the Service database as follows:

Global M-Claims Codes:

EPPRS Codes:

ASIA Codes :