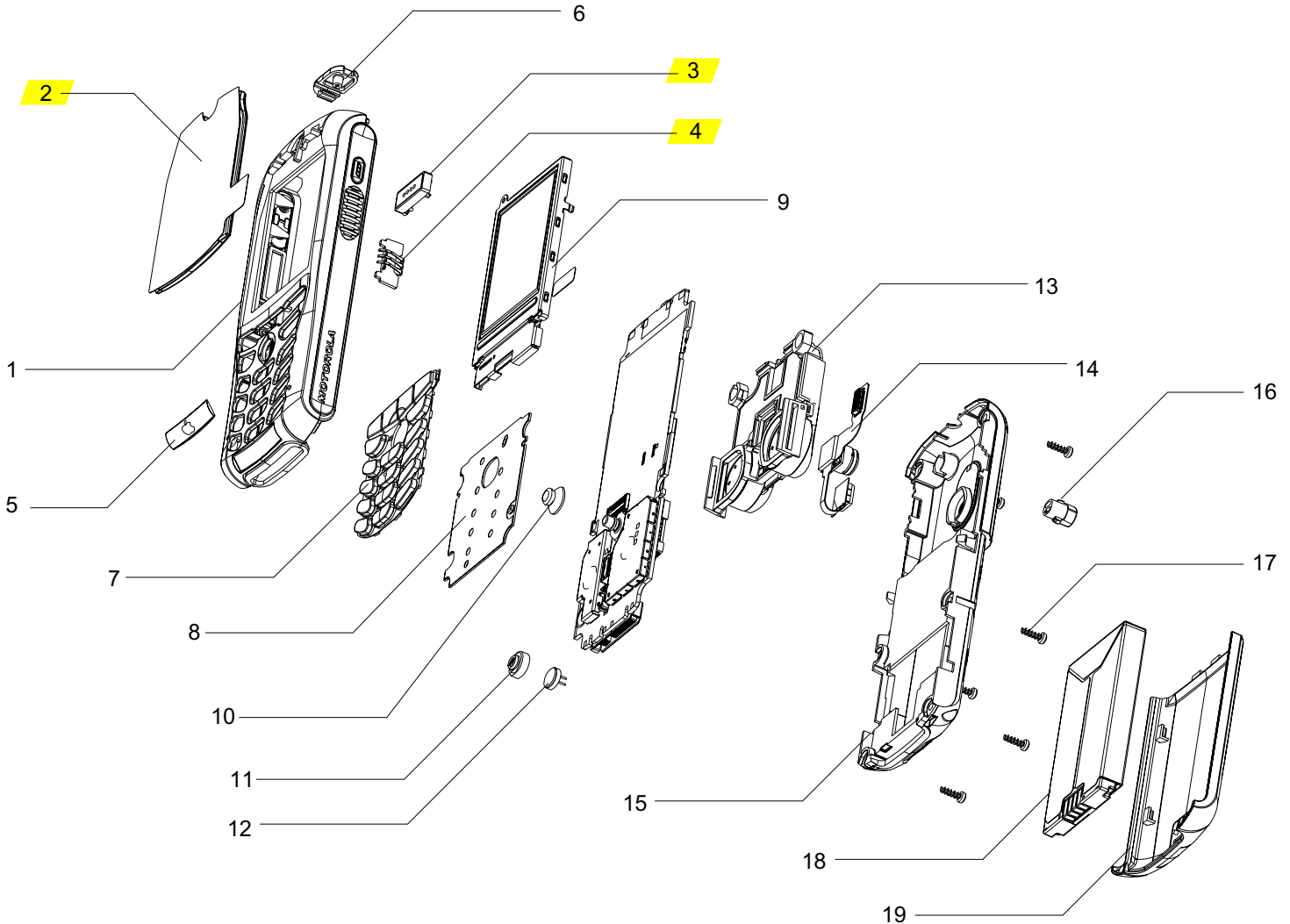


Item No.	Motorola Part No.	Description	Europe	MEA
1	1589893N12	Front Housing Star White	✓	✓
2	6189782N02	Lens	✓	✓
3	5089574N01	Speaker	✓	✓
4	4089521N01	Volume BTN Switch	✓	✓
5	1389787N25	Escutcheon	✓	✓
5	1389787N38	Escutcheon TIM	✓	✓
6	0589579N02	HS Grommet	✓	✓
7	3887683Y03	Keypad English iTunes	✓	✓
7	3887683Y05	Keypad Cyrillic iTunes	✓	✓
8	0187816Y01	Keyboard PCB 4 Key	✓	✓
9	7289638N04	Display Assy	✓	✓
10	1587437Y01	Joystick Cap	✓	✓
11	0589598N01	Mic. Grommet	✓	✓

Item No.	Motorola Part No.	Description	Europe	MEA
12	5087974K02	Microphone	✓	✓
13	1589605N02	Chassis Speaker Assy	✓	✓
14	0189619N03	Camera Assy	✓	✓
15	1589794N14	Rear Housing Star White	✓	✓
16	0589731N01	RF Grommet	✓	✓
17	0309315B23	Screw long (2)	✓	✓
17	0309315B24	Screw short (4)	✓	✓
18	SNN5699A	Battery	✓	✓
19	SHN8651A	Battery Door Star White	✓	✓
-	6087603L01	RTC Battery	✓	✓
-	SPN5038B	Charger Euro	✓	✓
-	SPN5039A	Charger UK	✓	✓

Table 1.00

 = part of assembly



REVISIONS	
European & MEA	2007.06.21
Level 1-2 Parts List	Version 1.1
Product Name:	E1
	Page 1 of 2

Level 1-2 Parts List					
Components					
Ref. Des.	Part Number	Description	EU	MEA	Comments
J1240	0989675N03	HEADSET CONNECTOR	✓	✓	
J1261	2889629N01	CONNECTOR MTF	✓	✓	
J1301	0988866N01	CONNECTOR MAIN DISPLAY	✓	✓	
J1350	3989654N04	CONNECTOR SIM CARD	✓	✓	
J1400	0987636K06	CONNECTOR I/O 17 PINS	✓	✓	
J2000	0985622G02	CONNECTOR 2 PIN SOCKET	✓	✓	
J40	0987378K01	CONNECTOR RF	✓	✓	
J950	3987522K03	BATTERY CONNECTOR	✓	✓	
J951	0988252L01	CONNECTOR RTC BATTERY	✓	✓	
M1300	3989655N02	CONNECTOR M1300	✓	✓	
M1400 M1401 M1402	3989611N01	CONTACT SIDE SWITCH	✓	✓	
P1400	0989721N01	FRONT ENDO CONNECTOR	✓	✓	

Table 2.00

Revision History		
Version	Date	Description
1.0	14-Jun-2005	Released
1.1	21-Jun-2007	Update Item 7,9 & 15