



Consumer Solutions & Support  
US Competency Center  
600 North US Highway 45  
Libertyville, Illinois 60048  
Website: gs.mot.com

**INFORMATIONAL FIELD SERVICE BULLETIN**

FSB Number: LVCCFSB2006-71  
Authors: Darwin Garcia  
Date: February 28, 2006  
Total No. of Pages: 5  
Subject: **Differences between V3\_05 and V3**  
Model Affected: **V3\_05 & V3**  
Level of Repair: 2

**Problem**

Informational FSB to show the major differences between V3\_05 and V3.

**Label**

<b>V3_05 (APC E23)</b>	<b>V3 (APC D54)</b>
<p>V3_05 Does not have an exclamation mark (!)</p>	
<p>Different APC code on the MSN</p>	

**Software**

**V3\_05 (R4515)**

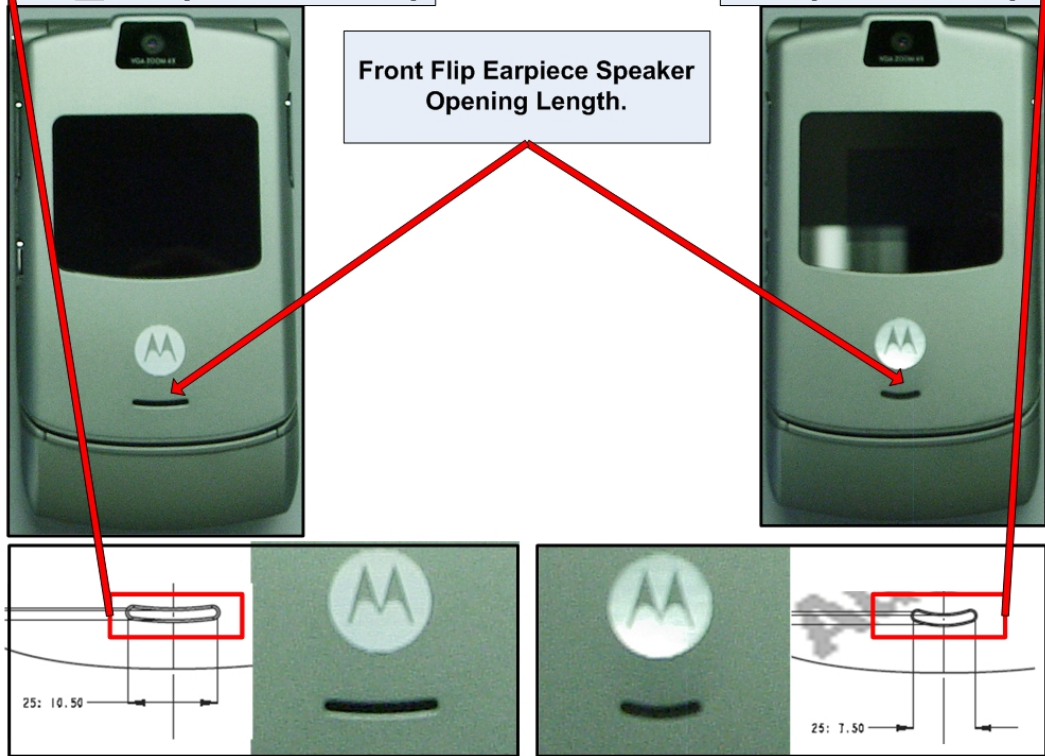
**V3 (R374)**

**Physical**

**V3\_05 (10.50mm)**

**V3 (7.50mm)**

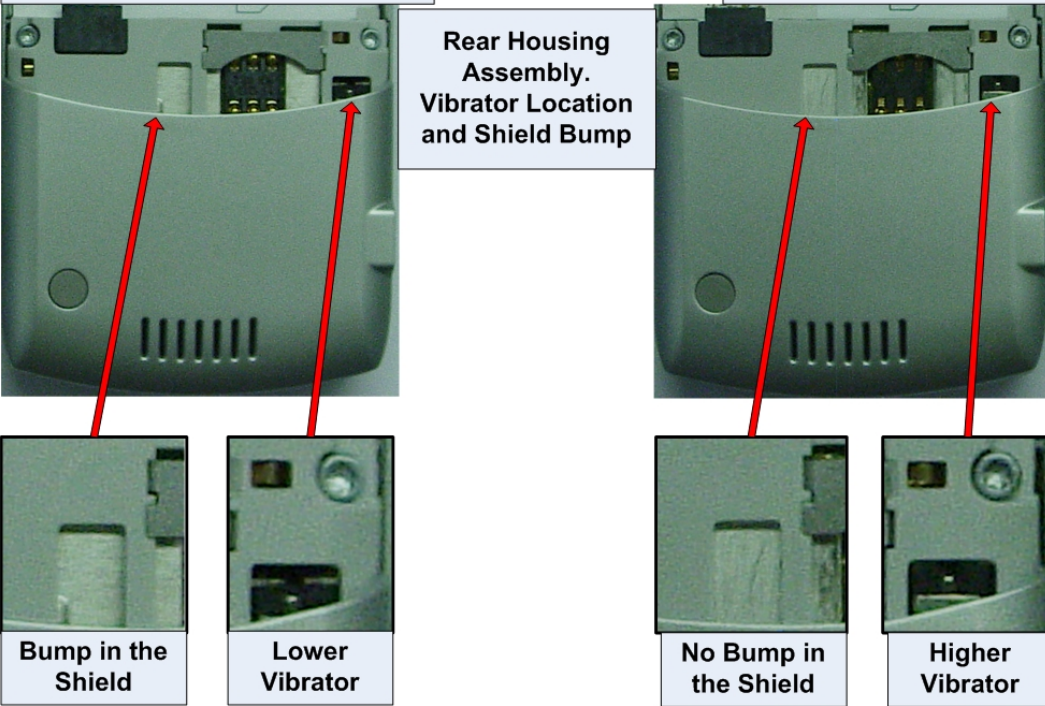
Front Flip Earpiece Speaker  
 Opening Length.



**V3\_05**

**V3**

Rear Housing  
 Assembly.  
 Vibrator Location  
 and Shield Bump



Bump in the  
 Shield

Lower  
 Vibrator

No Bump in  
 the Shield

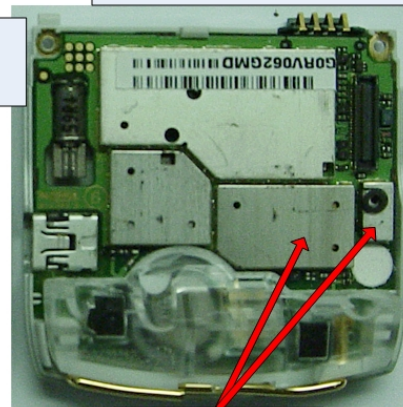
Higher  
 Vibrator

PCB

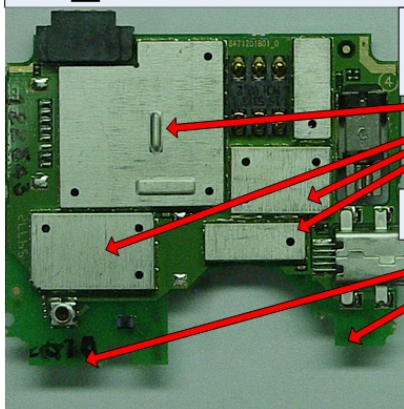
**V3\_05**



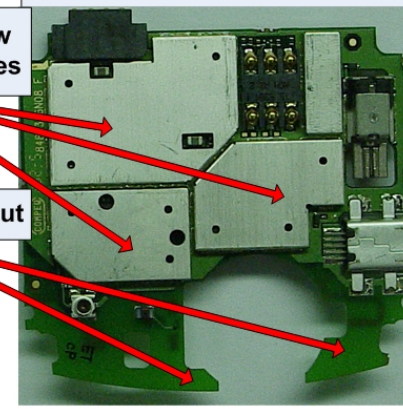
**V3**



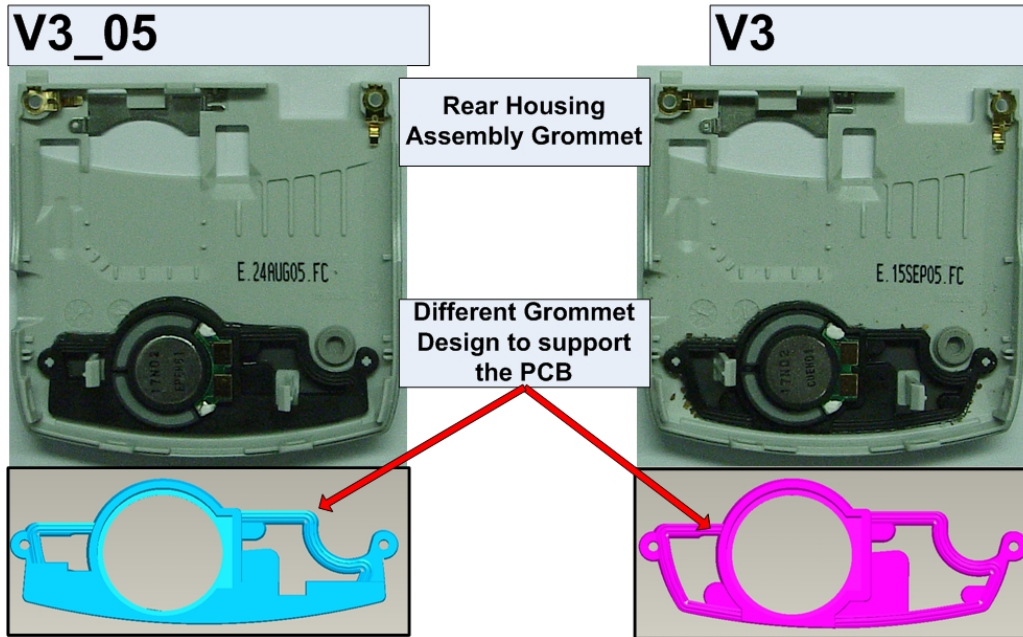
**V3\_05**



**V3**



Rear Housing Assembly



### Level Parts List

V3\_05 Parts List: [https://admin.mot.com/pcs-service/internalUsers/SEO\\_ONE\\_VIEW.aspx?id=407&Pname=V3\\_05](https://admin.mot.com/pcs-service/internalUsers/SEO_ONE_VIEW.aspx?id=407&Pname=V3_05)

V3 Parts List: [https://admin.mot.com/pcs-service/internalUsers/SEO\\_ONE\\_VIEW.aspx?id=228&Pname=V3](https://admin.mot.com/pcs-service/internalUsers/SEO_ONE_VIEW.aspx?id=228&Pname=V3)

Note: DO NOT assumed parts from V3\_05 are backward compatible with V3, there some part that are compatible but refer to appropriate product's parts list.

### Electrical

	Razr	Razr 05
Baseband/Synthesizer	Neptune LTE	Neptune LTE2
Power Management	PCAP2	Atlas UL
Receive/Transmit RFIC/VCO	Algae MB	RFMD 6027
Power Amplifier	Eagle	RFMD 3178
FLASH/PSRAM (Stacked)	32 MB (256 Mbit)/8 MB (64 Mbit)	32 MB (256 Mbit)/8 MB (64 Mbit)
Bluetooth Module	BT class 1(1.1)	BT class 2(1.2)
Image Sensor	VGA	VGA – Same as Razor
Graphics Accelerator	ATI W2250	ATI W2250
Display	Razr	Razr
Flip Assy	Razr	Razr
Battery	Razr	Razr
PC Board	Razr	Siliqua based pcb layout difference is BT area and connection to flip

V3\_05 Electrical Training: [https://admin.mot.com/pcs-service/internalUsers/SEO\\_ONE\\_VIEW.aspx?id=407&Pname=V3\\_05](https://admin.mot.com/pcs-service/internalUsers/SEO_ONE_VIEW.aspx?id=407&Pname=V3_05)

V3 Electrical Training: [https://admin.mot.com/pcs-service/internalUsers/SEO\\_ONE\\_VIEW.aspx?id=228&Pname=V3](https://admin.mot.com/pcs-service/internalUsers/SEO_ONE_VIEW.aspx?id=228&Pname=V3)



Consumer Solutions & Support  
US Competency Center  
600 North US Highway 45  
Libertyville, Illinois 60048  
Website: [gs.mot.com](http://gs.mot.com)

Note: Electrically V3\_05 is completely different from V3.

**Testing:**

**V3\_05 and V3 are Separated in the MotoTriage Tool**

Version TBD  
Comm:

**MotoTriage**

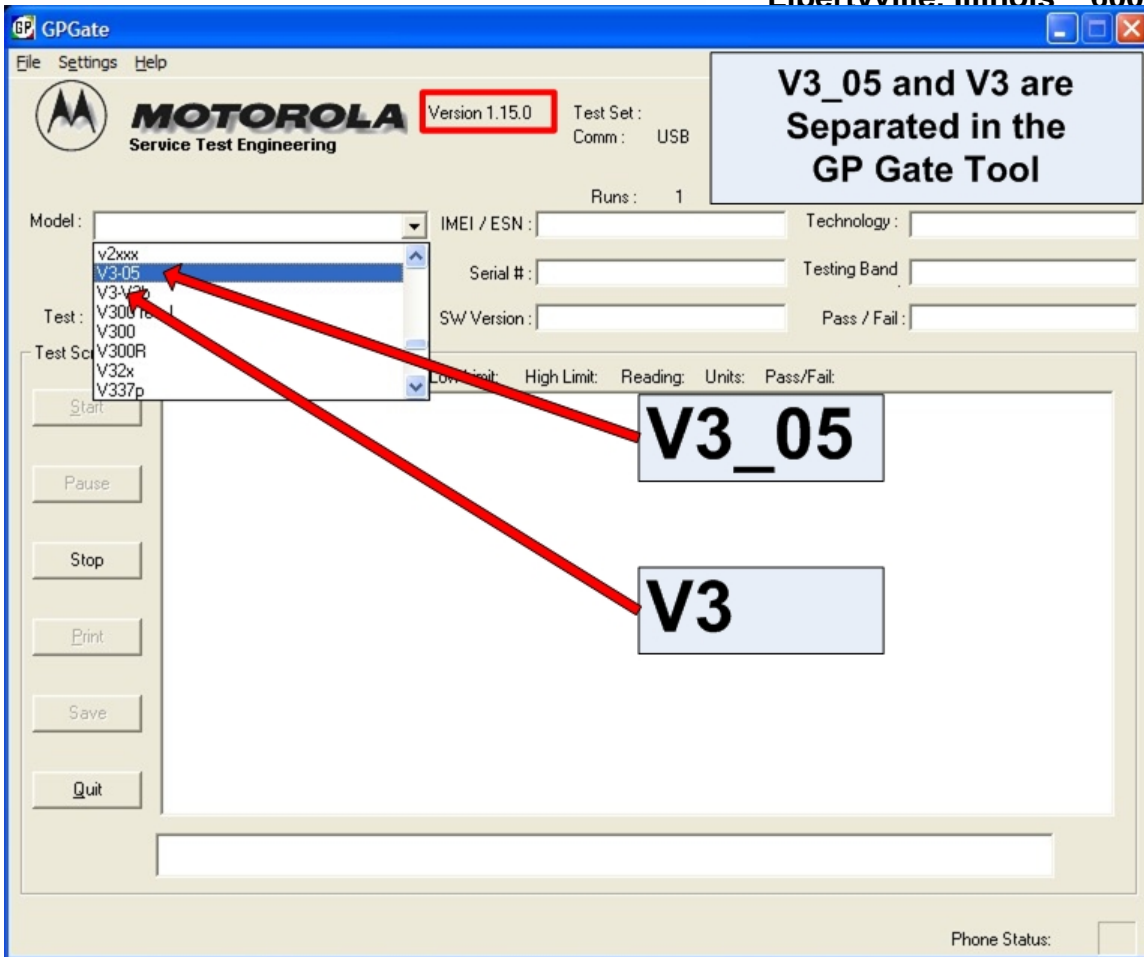
Please select a model

A1200 (GSM)	<b>V3_05</b>		C975 (3G)	<b>V3</b>
E1 (GSM)			E398 (GSM)	
E399 (GSM)	E770v (3G)	E815 (CDMA)	L2 (GSM)	L6 (GSM)
L7 (GSM)	T72 (GSM)	U6 (GSM)	V1050 (3G)	V180 (GSM)
V190 (GSM)	V191 (GSM)	V220 (GSM)	V235 (GSM)	V260 (CDMA)
V262 (CDMA)	V263P (CDMA)	V265 (CDMA)	V267P (CDMA)	V3 (GSM)
V3_05 (GSM)	V300 (GSM)	V303 (GSM)	V323 (CDMA)	V325 (CDMA)
V330 (GSM)	V360 (GSM)	V3C (CDMA)	V3i (GSM)	V3x (3G)
V400 (GSM)	V400p (GSM)	V500 (GSM)	V505 (GSM)	V525 (GSM)
V540 (GSM)	V547 (GSM)	V551 (GSM)	V555 (GSM)	V557 (GSM)
V557p (GSM)	V600 (GSM)	V635 (GSM)	V710 (CDMA)	V810 (CDMA)
V975 (3G)	V980 (3G)			



**MOTOROLA**

Consumer Solutions & Support  
US Competency Center  
600 North US Highway 45  
Libertyville, Illinois 60048



**Solution**

NA

**Field Service Action**

**Customer Returns:**

NA

**Call Center Action:**

N/A

**Service Inventory**

V3\_05 should be setup a separate product.

**Global Codes**

M Claims:

Customer Complaint Codes:

Problem Found Code:

Repair Code: