



Consumer Solutions & Support
US Competency Center
600 North US Highway 45
Libertyville, Illinois 60048
Website: gs.mot.com

INFORMATIONAL FIELD SERVICE BULLETIN

FSB Number: LVCCFSB2006-047
Authors: Darwin Garcia
Date: February 20, 2006
Total No. of Pages: 2
Subject: **V3 Display SW Compatibility**
Model Affected: **V3**
Level of Repair: 2

Problem

This is an information bulletin detailing the SW requirements for the different display supplier.

7290086N01 - Sanyo = All SW Versions

7290086N02 - Sharp = 42.07R_A or later and also on 41.C0R (41.C3R_B for Cingular)

7290086N06 - Samsung = 42 or later

7290086N03 - Innolux - 42.10R - Approved for North Asia and High Growth Markets only.



7290086N01
Supplier: Sanyo

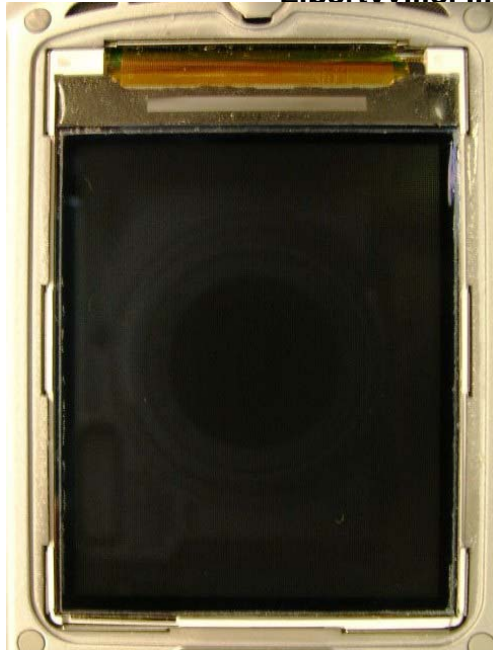


7290086N02
Note the label on display driver
Supplier: Sharp



MOTOROLA

Consumer Solutions & Support
US Competency Center
600 North US Highway 45
Libertyville, Illinois 60048
com



7290086N06

Supplier: Samsung
Just recently started production

7290086N03

Supplier: Innolux

Note: If the right SW is not flashed the display will not turn on.

Solution

N/A

Field Service Action

Display Repairs:

When replacing V3 displays determined its supplier, identify the correct SW, verify is approved and then re-flash accordingly.

Note: The right SW is must be flashed prior to performing any testing.

To verify the latest approved SW for you region go to: <http://msam.pcs.mot.com/nsra/>

Call Center Action:

N/A

Service Inventory

N/A

Global Codes

M Claims:

Customer Complaint Codes: N/A

Problem Found Code: N/A

Repair Code: N/A