



Consumer Solutions & Support
US Competency Center
600 North US Highway 45
Libertyville, Illinois 60048
Website: gs.mot.com

Informational FIELD SERVICE BULLETIN

FSB Number: LVCCFSB2006-293
Author: Tony Bryan
Date: July 07, 2006
Total No. of Pages: 3
Subject: GSM PEBL U6 – Poron Pad Placement
Phone Models: GSM PEBL U6
Level of Repair: 2

Problem

This is an informational field service bulletin to communicate an issue that was observed by engineering during field repair of the GSM PEBL U6 product. Service Centers were not properly placing the required Poron Pads upon reassembly of repaired units. Part Numbers for the required Poron Pads were not set-up for Service Centers to order.

Solution

Engineering has created part numbers for the required Poron Pads used in the assembly on the GSM PEBL U6 product. These parts are now available for Service to order. See information below for proper placement.

3271015E01 -- Square Poron Pad

3271014E01 -- L-Shape Poron Pad

Field Service Action

Customer Returns:

When servicing GSM PEBL U6 customer returns that require disassembly as part of the normal repair process, ensure the required Poron Pads are placed correctly upon reassembly. See information below for proper placement.

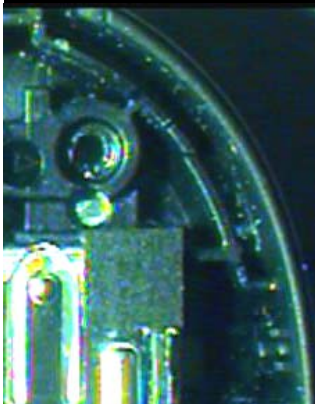
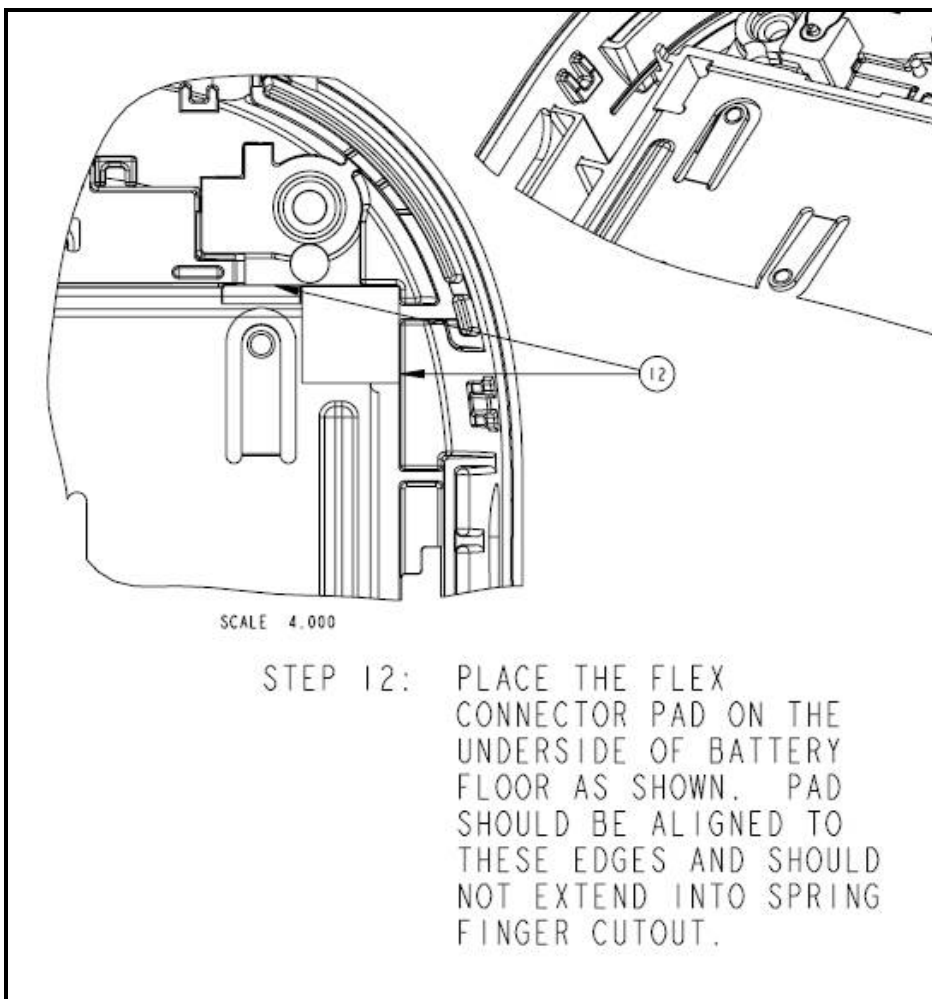
Note: Poron Pads should not be re-used once they have been removed.

Service Inventory:

Please stock the following part numbers to be used for field repair of the GSM PEBL U6 product.

3271015E01 -- Square Poron Pad

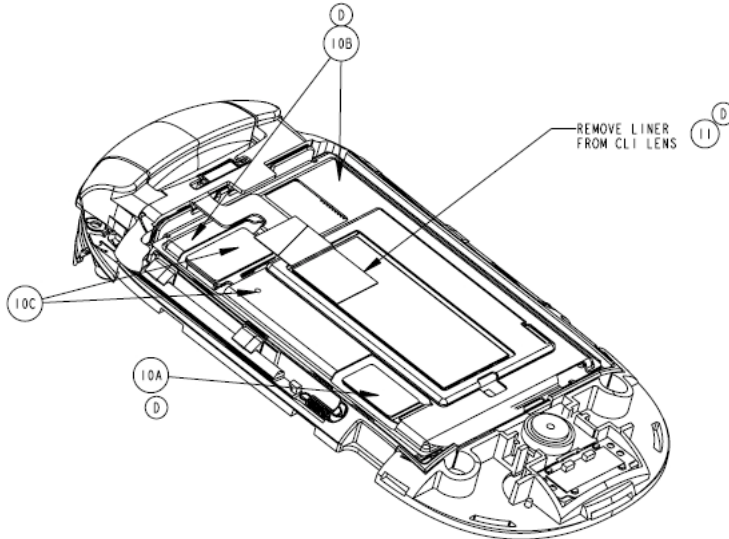
3271014E01 -- L-Shape Poron Pad





MOTOROLA

**Consumer Solutions & Support
US Competency Center
600 North US Highway 45
Libertyville, Illinois 60048
Website: gs.mot.com**



STEP 10A: APPLY ONE ADHESIVE PAD (4701-30-25021-04, Thickness=0.53 mm) TO THE FLEX AT THIS LOCATION.

STEP 10B: APPLY TWO ADHESIVE PADS (4701-30-25021-04, Thickness=0.53 mm) TO THE DISPLAY BEZEL AT THESE LOCATIONS.

STEP 10C: APPLY ONE L-SHAPED ADHESIVE PAD (4701-30-25021-04, Thickness=0.53mm) TO THE FLEX CONNECTOR AND FLEX TAB AT THIS LOCATION.

STEP 11: REMOVE THE PROTECTIVE LINER FROM THE SMALL CLI DISPLAY.

