

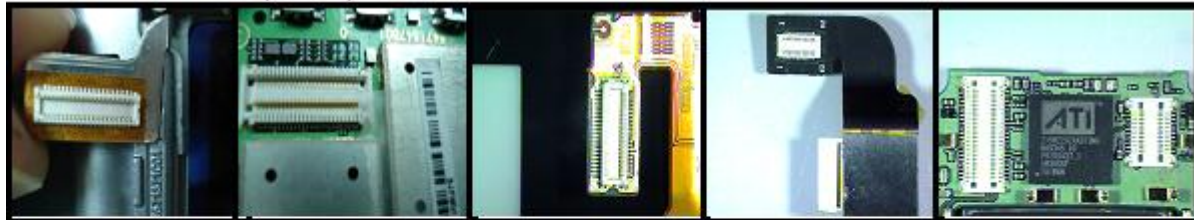
FIELD SERVICE BULLETIN

FSB Number LVCCFSB2007 - 81
Author Anthony Bryan
Date Monday, March 05, 2007
Subject **GSM - MOTOKRZR K1 - Board to Board Connector (Compatibility)**
Model Affected GSM KRZR K1
Level Of Repairs 2

Problem

Service is aware of a component hardware compatibility issue that affects certain production models of GSM KRZR K1. After initial product ramp, Foxlink was brought up as a second source supplier for the board to board connectors used on the KRZR K1 product. The new Foxlink connectors are not compatible with the existing connectors supplied by Molex. Attempting to mate connectors that are miss-matched from each supplier will result in structural damage to the connectors. This change was managed in production by re-structuring the BOM and creating new part numbers to support both connector suppliers. The connector supplier can be determined visually by the color of the connector. Molex connectors are white and Foxlink connectors are black. See Images and Part Numbers below. The phone model number was also up suffixed to SJUGxxxxDA to reflect the new hardware.

Molex Connectors (White)



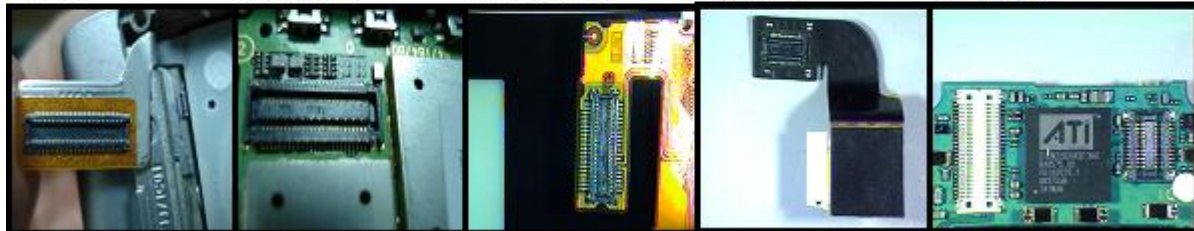
A. Flex

B. Main PCB

C. Display LCD

D. Imager

E. Flip PCB



Foxlink Connectors (Black)

Solution

Service Teams should use the images above to determine the connector supplier and replace only with the corresponding part number for that supplier. See matrix below.

Component	Part Numbers w/Molex Connector	Part Numbers w/Foxlink Connector
Phone Model	SJUGxxxxAA/BA/CA/CB/EA	SJUGxxxxDA/DB
Flip Assembly	SHNxxxxA/B/C	SHNxxxxD/E
PCB Main XCVR	SLG4947xx	SLG5164xx
Flip PCB Assembly	SLG5081BA	SLG5165AA
Flex Assembly	0171564C01	0171564C03
Main Display LCD	7271376D01	7271745E01
Imager Assembly	0171569C01	0171569C02
PCB 50-Pin Conn.	0988866N02	0971332E02

Field Service Action

Customer Returns:

When servicing GSM KRZR K1 customer returns that require the replacement of one of the affected components listed above, then:

1. Visually inspect the original connectors to determine the supplier.
2. Replace using only the corresponding part number for that supplier.

Service Inventory:

Please stock inventory of both part numbers for the affected components listed above to support both connector suppliers.

Call Center Action

No Action Required

Service Entry Code

Global Service Codes

Complaint Code:

Problem Found Code:

Reference Designator:

Repair Code:

