



E380 (U-Flip)



Level 3 Training

Level 3 Authorized
Ver 1.1

Highlights

- GSM 900/1800 GPRS (1U/4D)
- GSM 850/1900 GPRS (1U/4D)
- (Same Circuit as 900/1800 – Only parts List is different)
- New Design With Look Through Flip
- 4K Color CSTN Display
- Polyphonic Speakers
- Fun Lights
 - Interacts with kJava Games, Ringer Tunes & Caller ID
- Haptics
 - The vibrator interacts with kJava Games

Highlights

- MMS (Multi Media Messaging)
- EMS 5.0
- WAP 2.0
- Instant Messaging
- kJava Games
 - Embedded and downloadable
- Composable, Downloadable MIDI (16 Channels) & iMelody Ring Tones
- Downloadable Themes (Ringer Tones, Pictures & Screen Savers)
- Based on the C350 (TA02 Refresh) platform



MOTOROLA
intelligence everywhere™

Specifications

Bands:	GSM 900/1800 GPRS GSM 850/1900 GPRS
Size:	75 cc
Weight:	80 g
Display:	4K Color CSTN 96 x 65 pixels
Talk time:	up to 300 minutes*
Standby time:	up to 240 hours*

* 600mAh LiIon battery

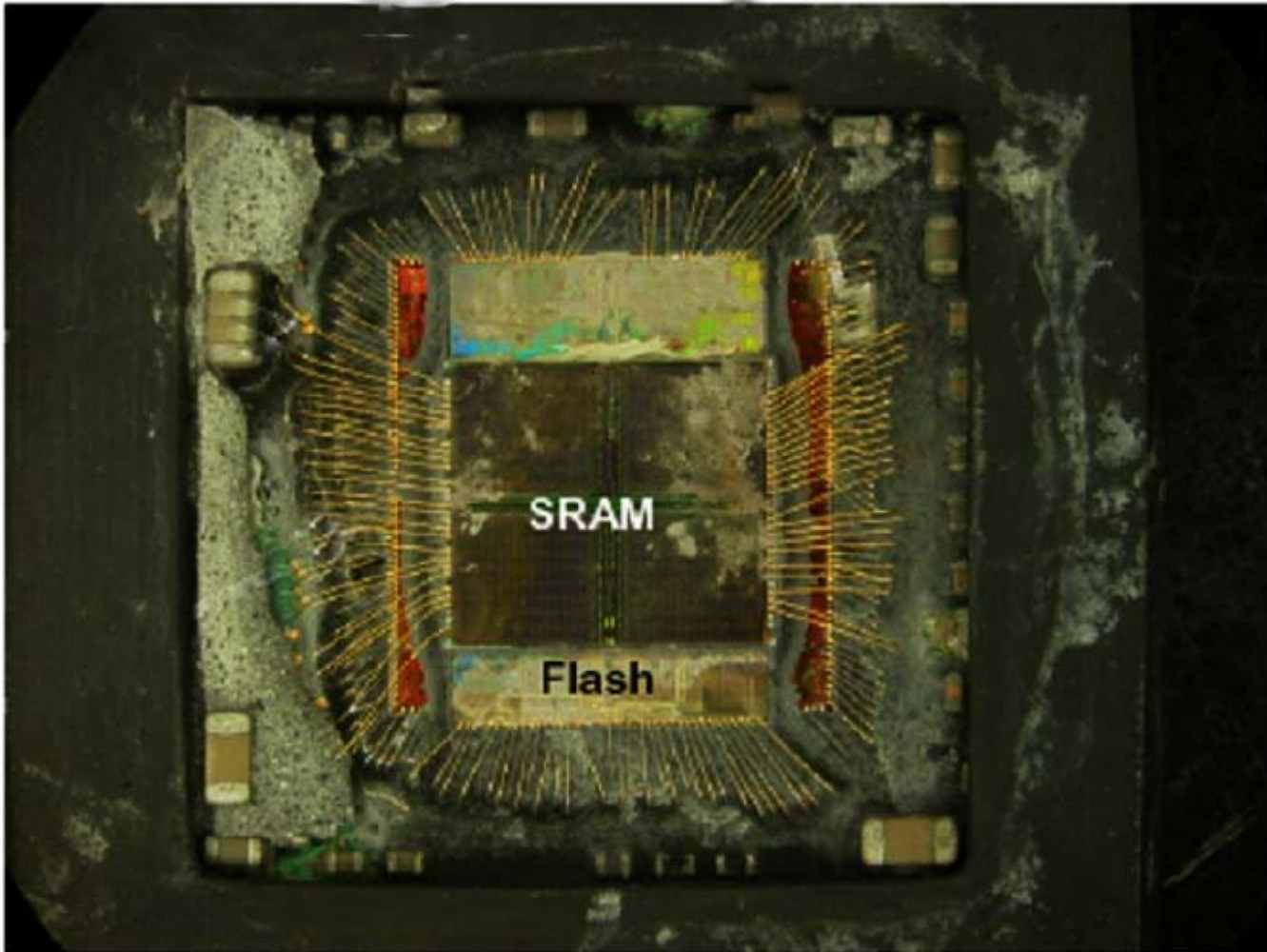
Chipset

- U150 "Algae"
 - (Frontend IC, MagicLV, RX/TX VCO)
- U300 "Athena"
 - (RX/TX Switch, PA + Matching, PAC IC, Switch Control)
- U800 "Neptune"
 - (Patriot, GCAP, Magic)
- U900 "Seaweed 2"
 - (GCAP, Magic)
- U920 "Diamondhead 2"
 - (Charger, Ext. Power Control)
- Polophonic IC "Oki" **new**
 - (for more dynamic)
- Combiend 4MByte Ram and 16MByte Flash



MOTOROLA
intelligence everywhere™

SRAM/Flash Stack

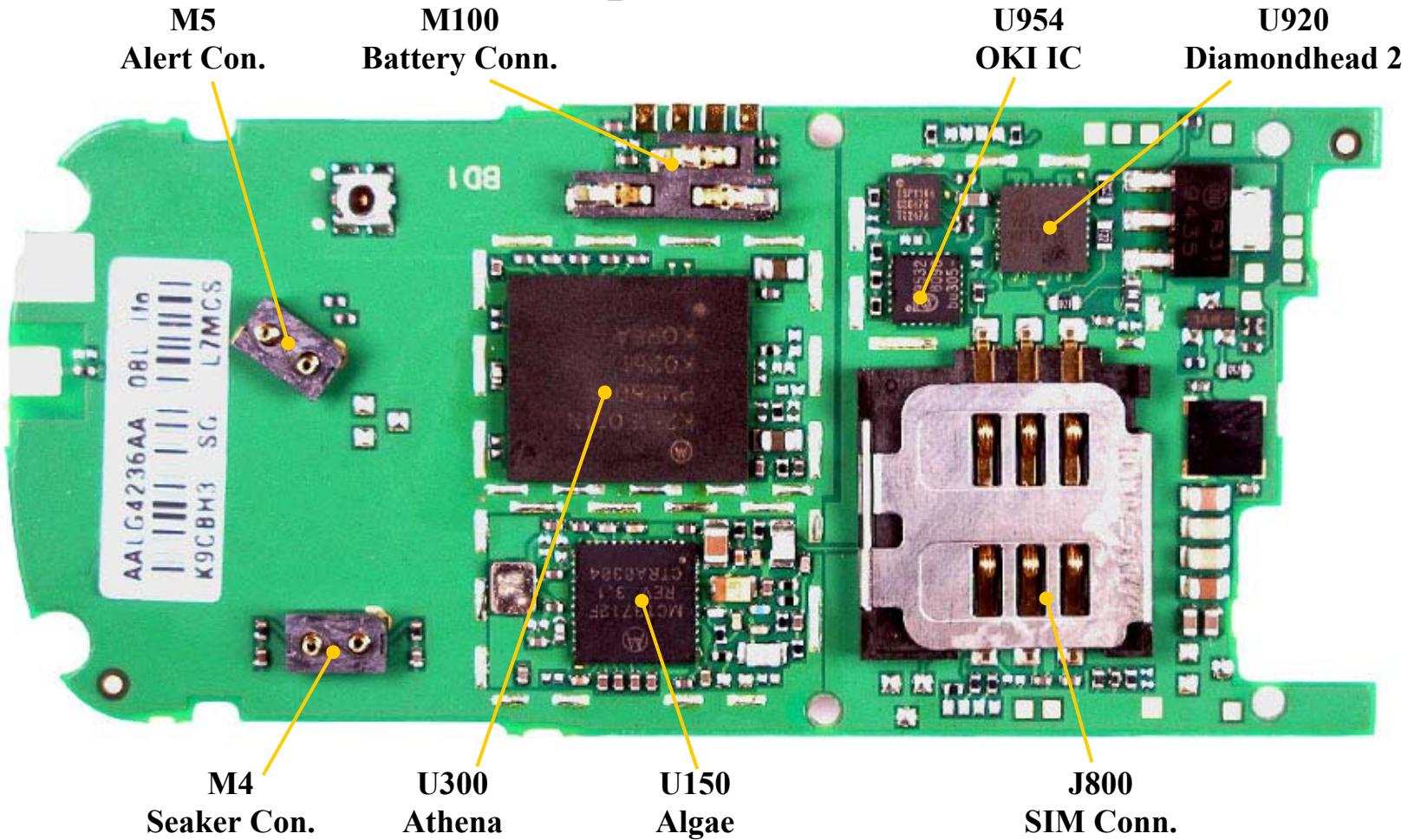


Level 3 Authorized
Ver 1.1

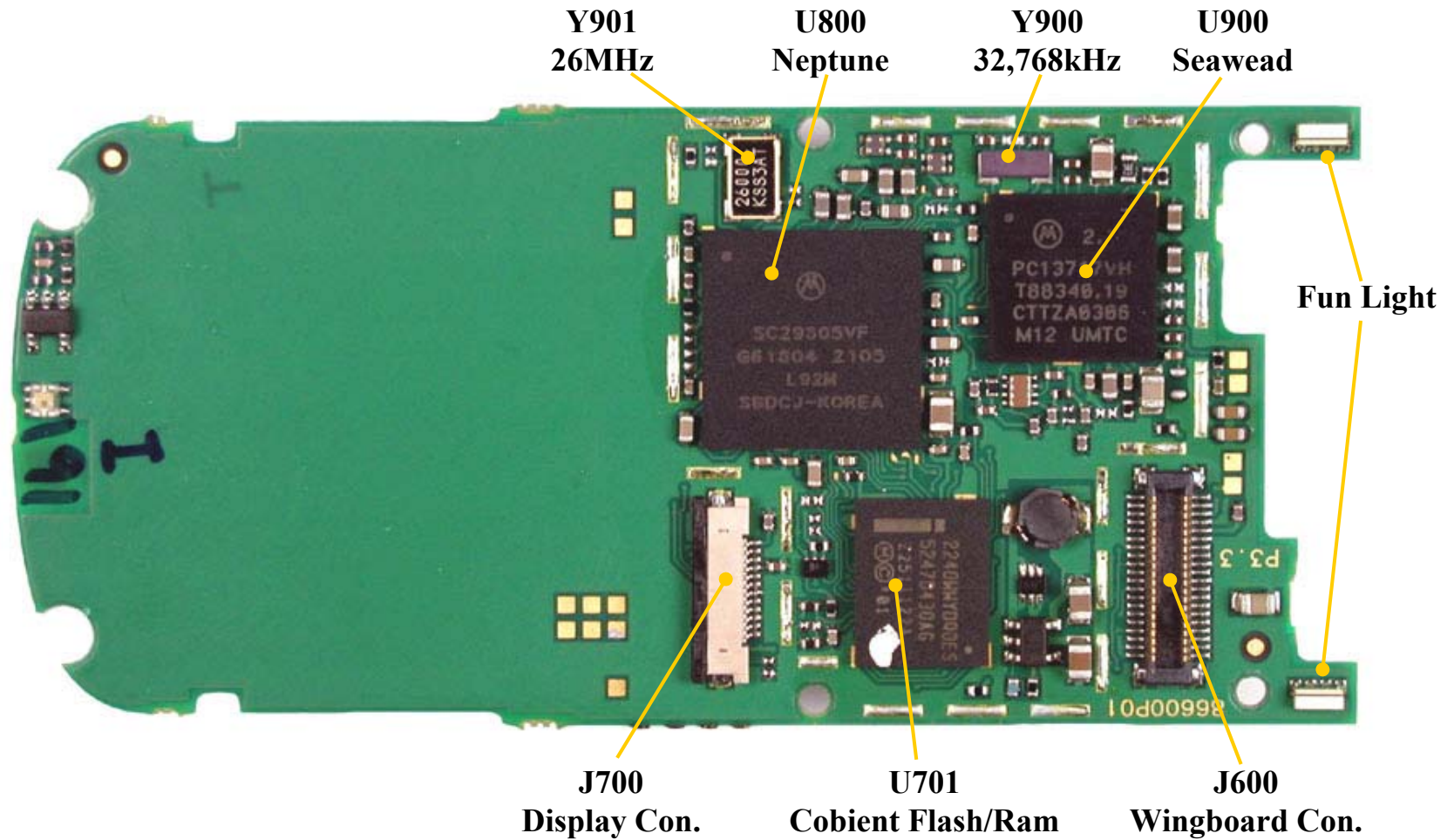


MOTOROLA
intelligence everywhere™

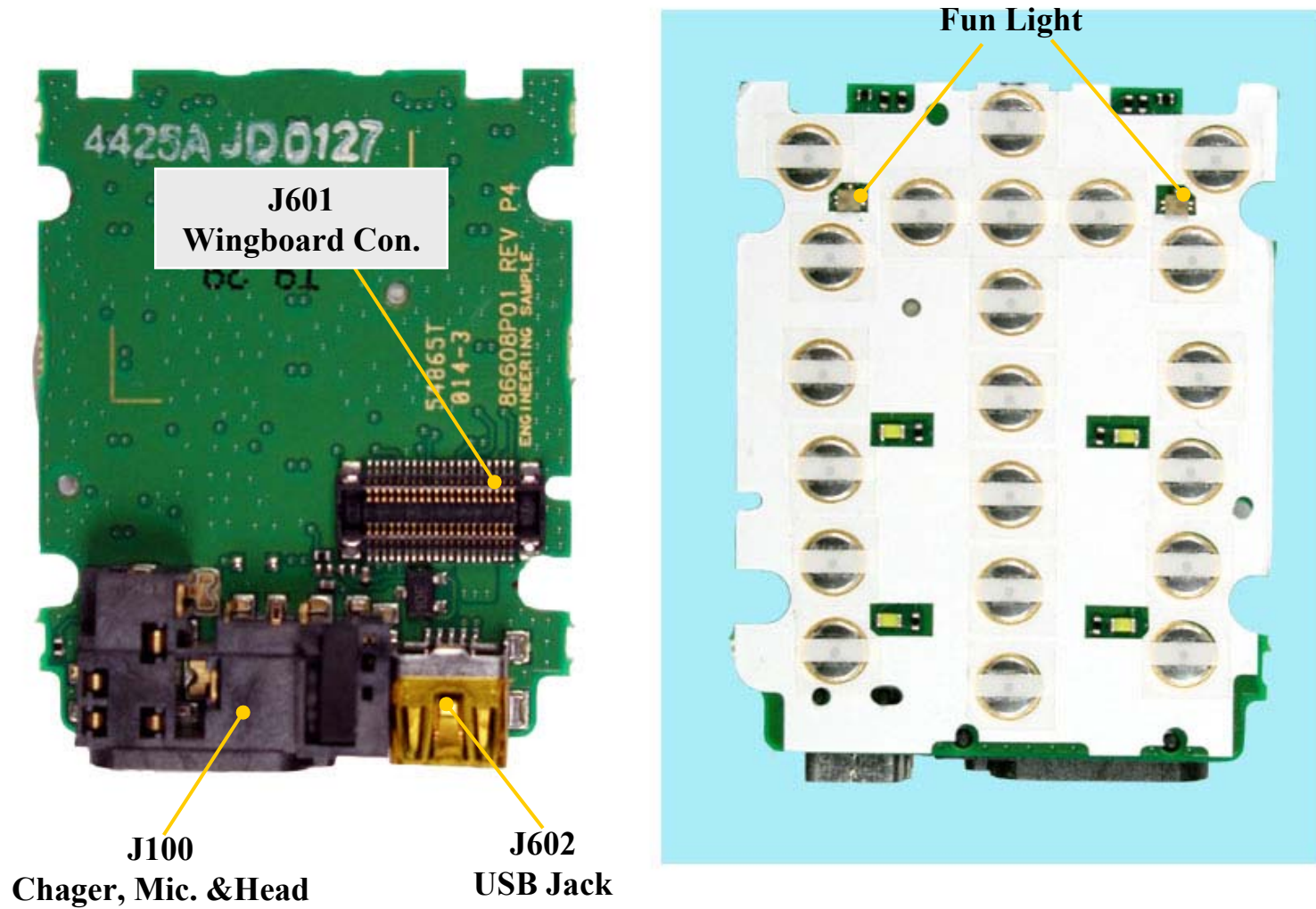
Top Side



Bottom Side



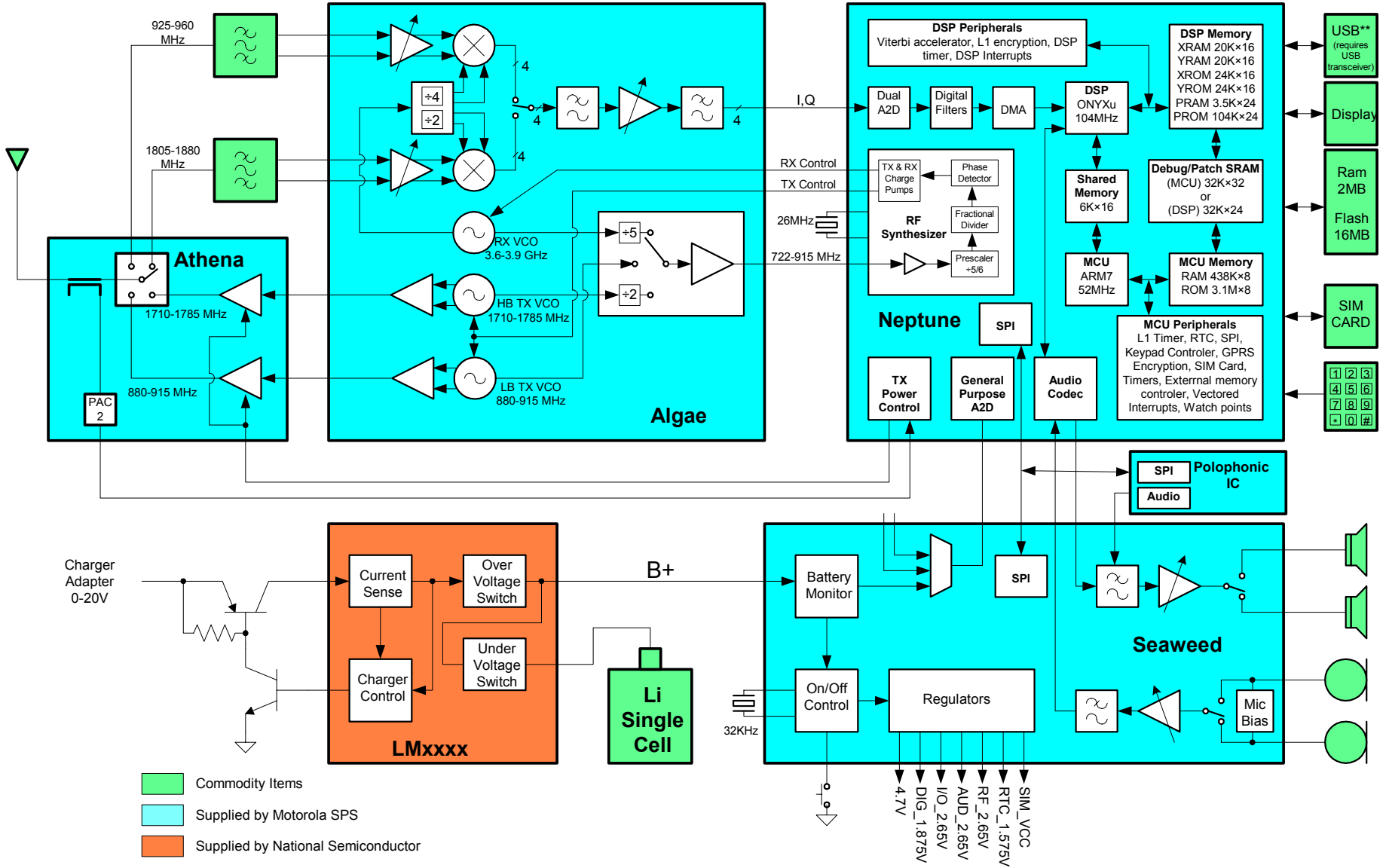
Wing Board





MOTOROLA
intelligence everywhere™

Block Diagram



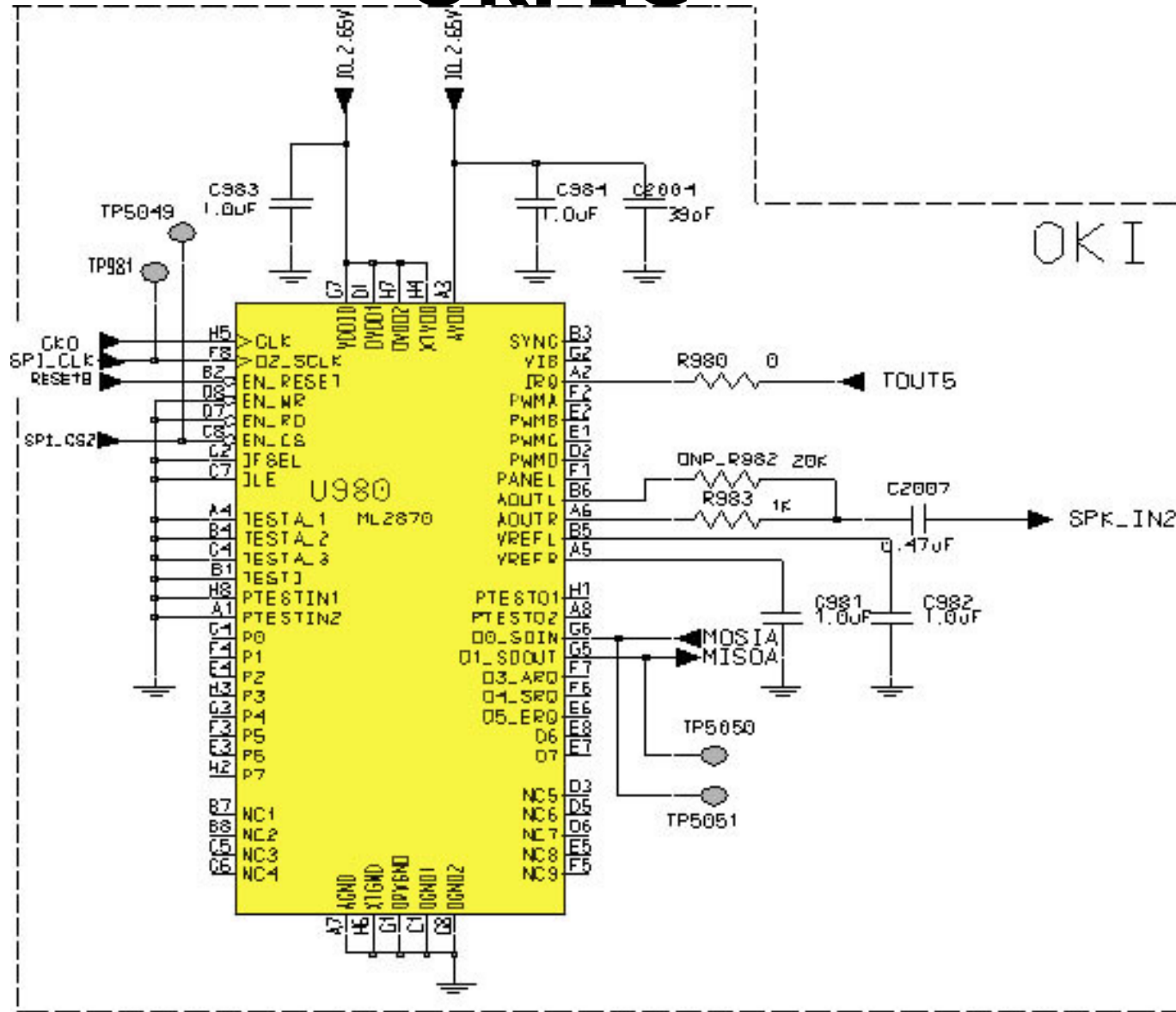
Signal description U701

Signal	from	to	Description
CombiFlash U701			
BURSTCLK	U800	U701	BURST CLocK to clock U701 to synchronize the loading of addresses and delivery of burst read data
CS0B	U800	U701	Chip Select 0 - active low output is used as external Flash memory select
CS1B	U800	U701	Chip Select 1 - active low output is used as external RAM memory chip select
DIG_1,875	U900	XXX	Supply for Neptune cores and logic and U701 (FLASH)
EB0_B	U800	U701	Used as write Enable to partition of SRAM-part
EB1_B	U800	U701	Used as write Enable to partition of SRAM-part
ECBB	U800	U701	End Of Current Burst-active low- to indicate to FLASH the end of current burst sequence.
LBAB	U800	U701	Load Burst Address active low- causing that U701 is loading a new starting burst address
RESETB	U900	U800/U701	active low RESET for U800 and U701
VCCQ	X	U701	1,875V supply Voltage for SRAM-part U701



MOTOROLA
intelligence everywhere™

Oki IC



Level 3 Authorized
Ver 1.1



Signal description OKI IC

Signal	from	to	Description
U980 OKI			
CK0	U800	U980	clock from Neptune
IO_2,65V	U900	U980	Supply for Voltage Multiplier, Neptune I/O, serial Flash, Display, Algae
MISOA	U800	U980	master in slave out databus from Neptune to OKI
MOSIA	U980	U800	master out slave in databus to Neptune from OKI
RESETB	U900	U980	active low RESET for U800, U701 and U980
SPI_CLK	U800	U980	serial perefery interface clock
SPI_CS2	U800	U980	serial perefery interface chip select
SPK_IN2	U980	U984	Speaker out Audioinformation to Seaweed SPK_IN2 inverted amp. Input
TOUT5	U800	U980	high active timeing output for enable OKI