

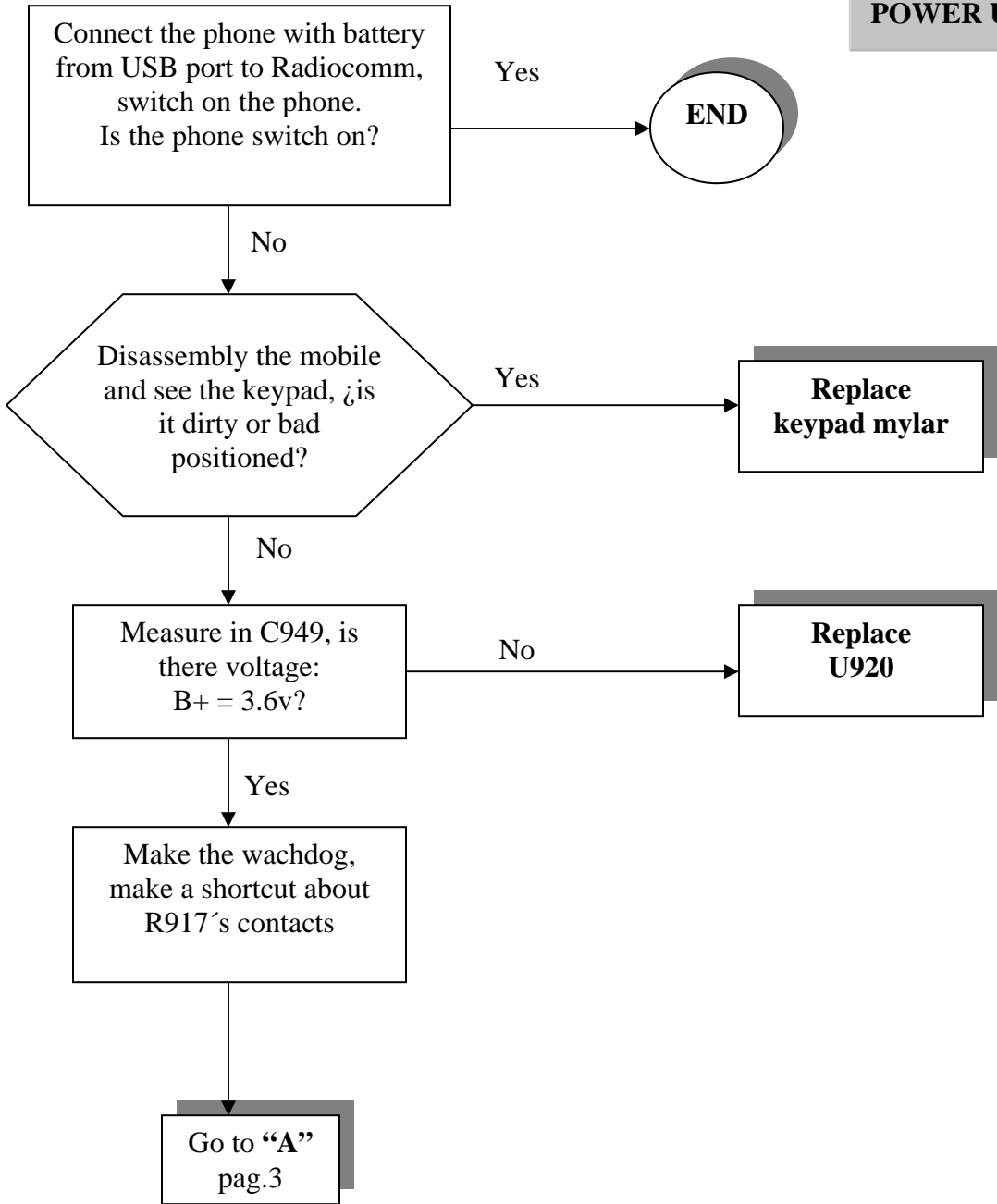


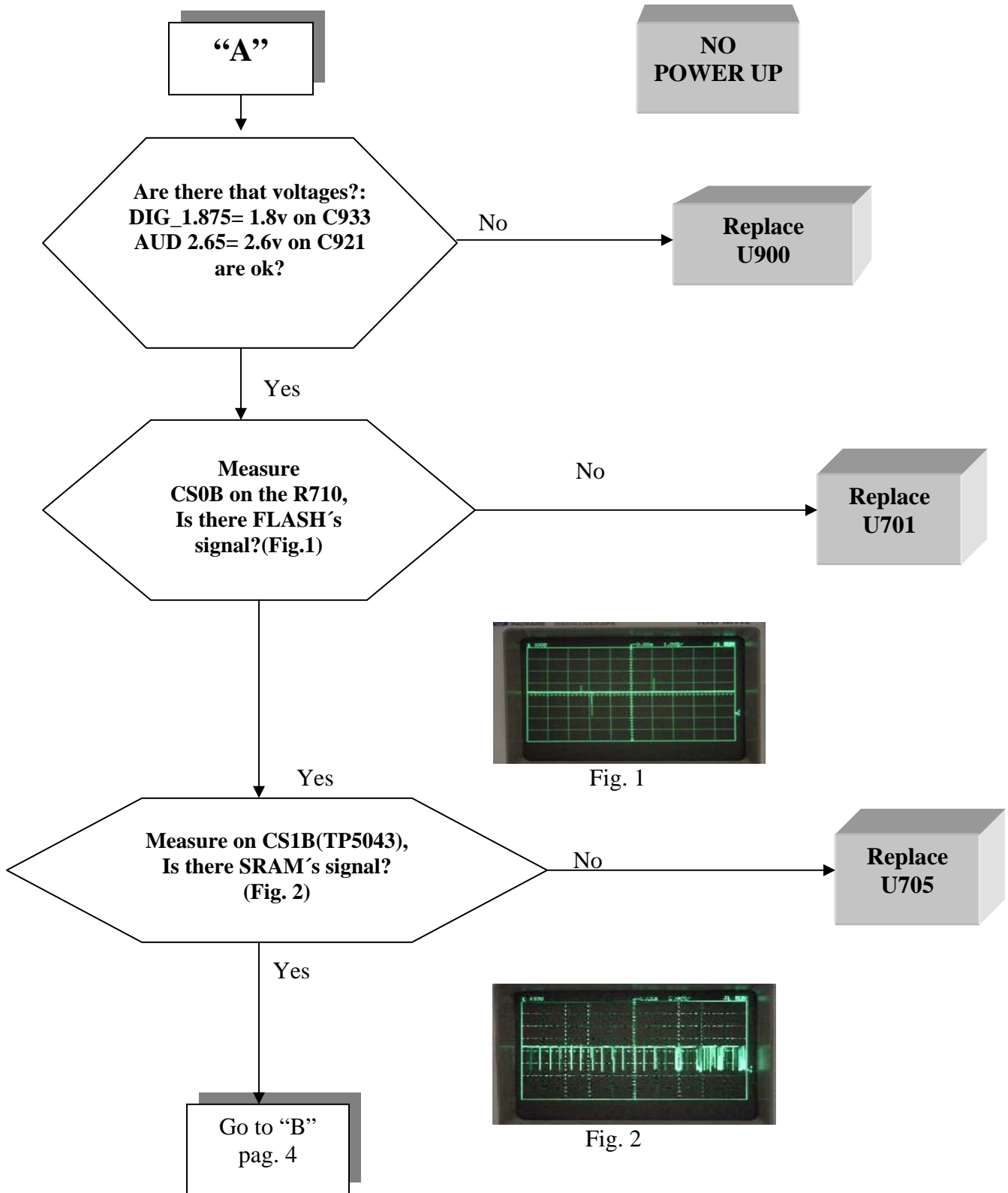
C250
Debug Guide Level3
Motorola Confidential Proprietary

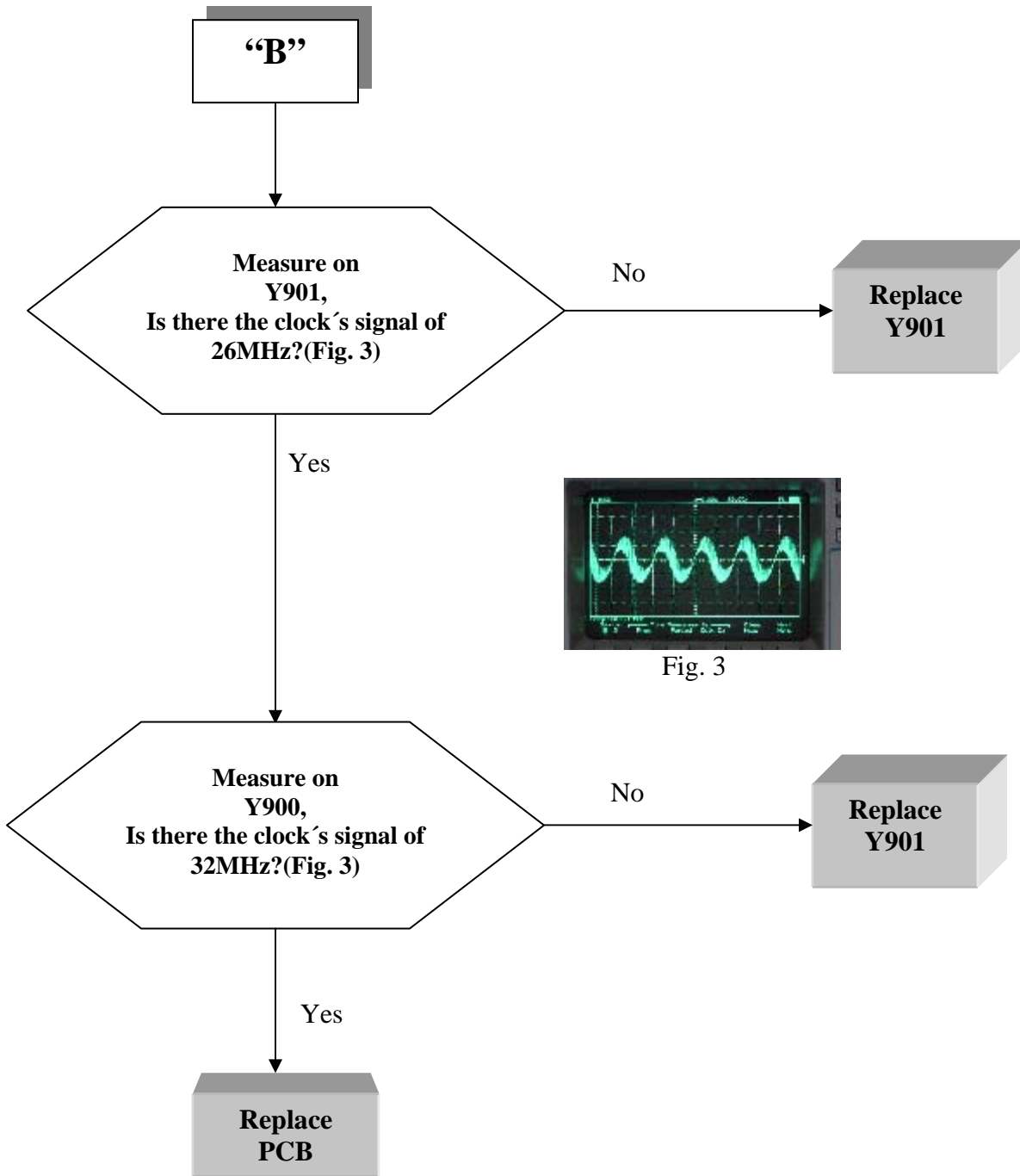
DEBUG GUIDE
C250
LEVEL 3

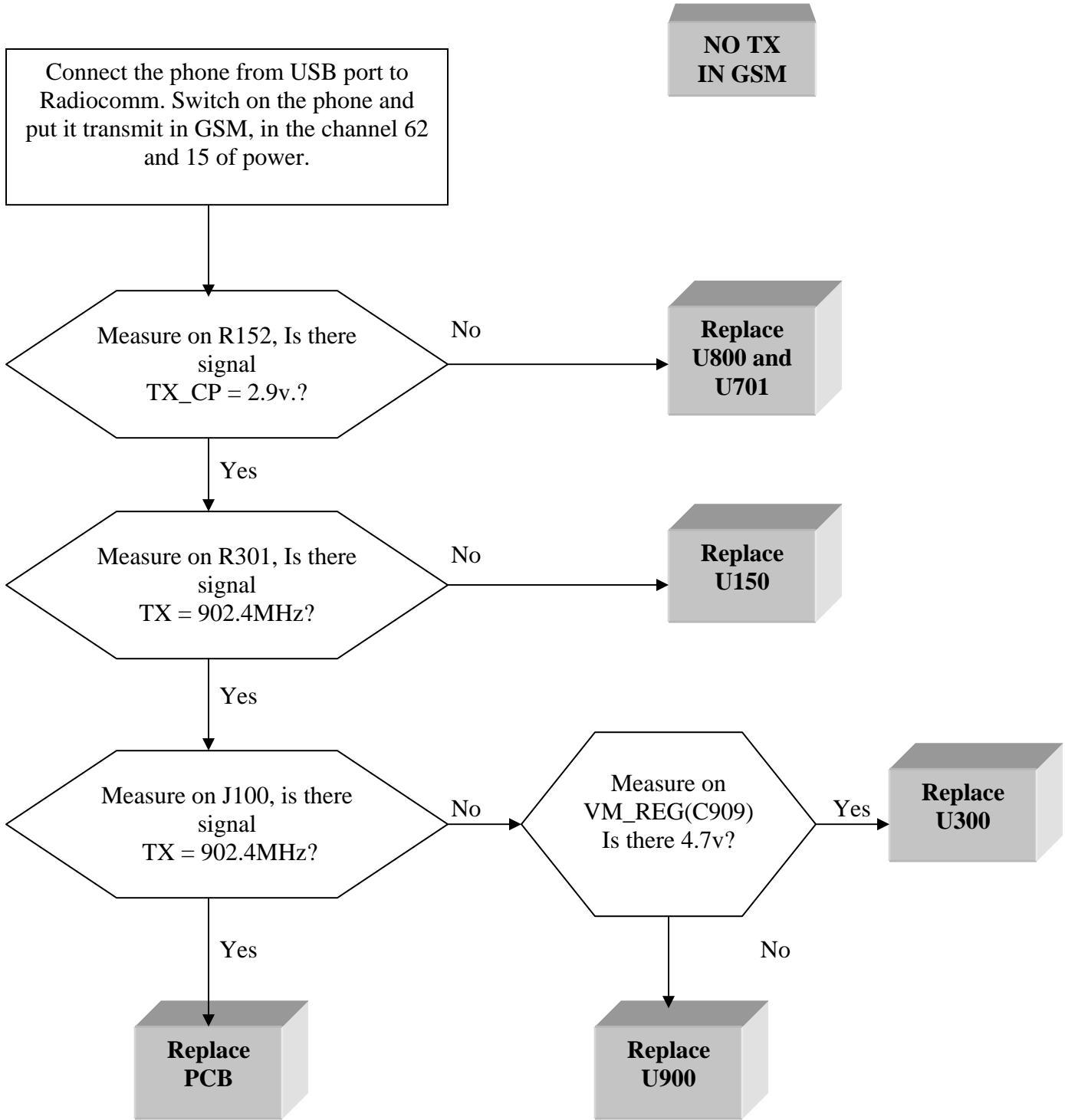
No power up.....pag. 2, 3 y 4
No Tx in GSM.....pag. 5
No Tx in DCS.....pag. 6
No Rx.....pag. 7
Procedure for flash´s recover.....pag. 10, 11 y 12

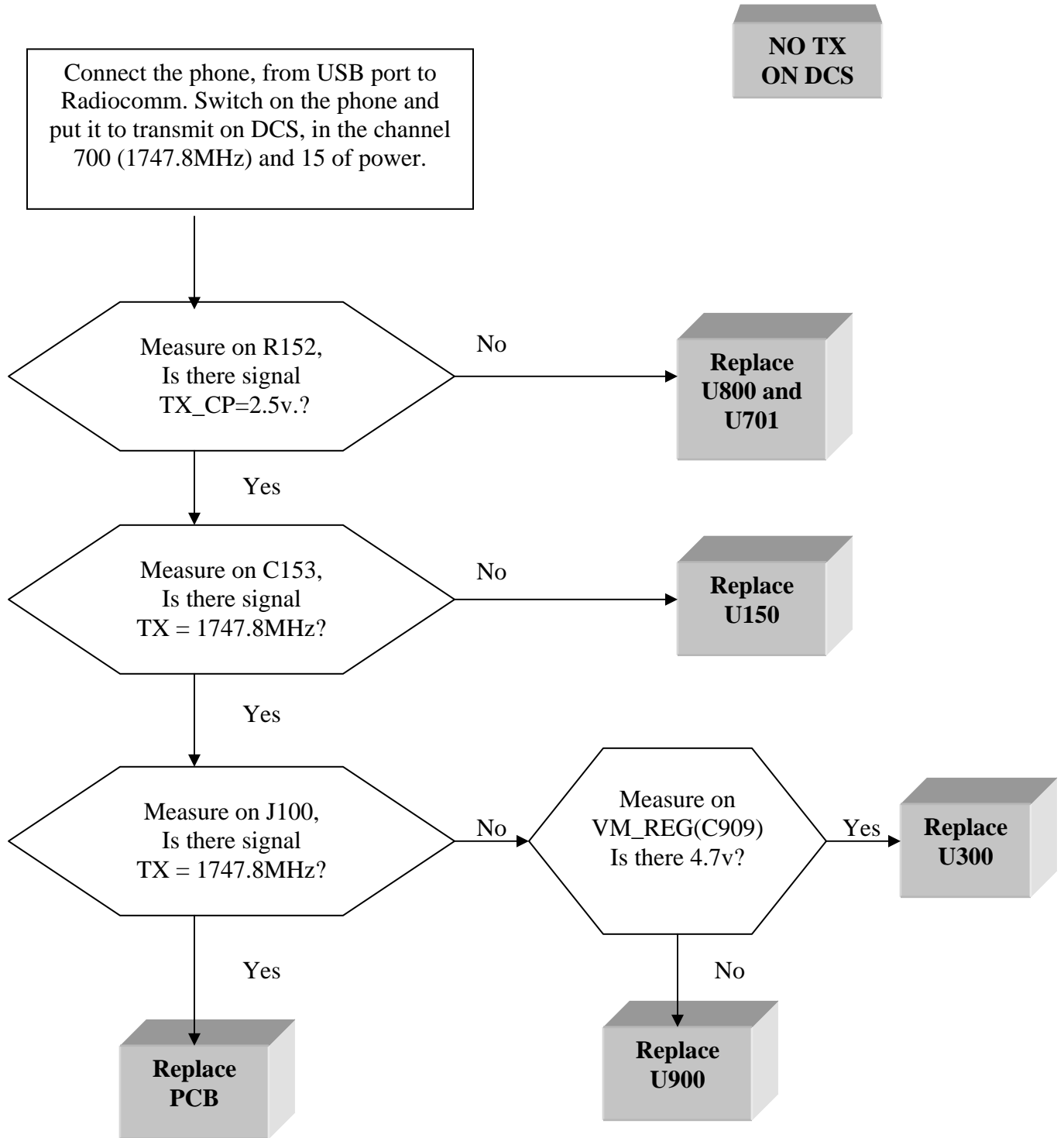
**NO
POWER UP**

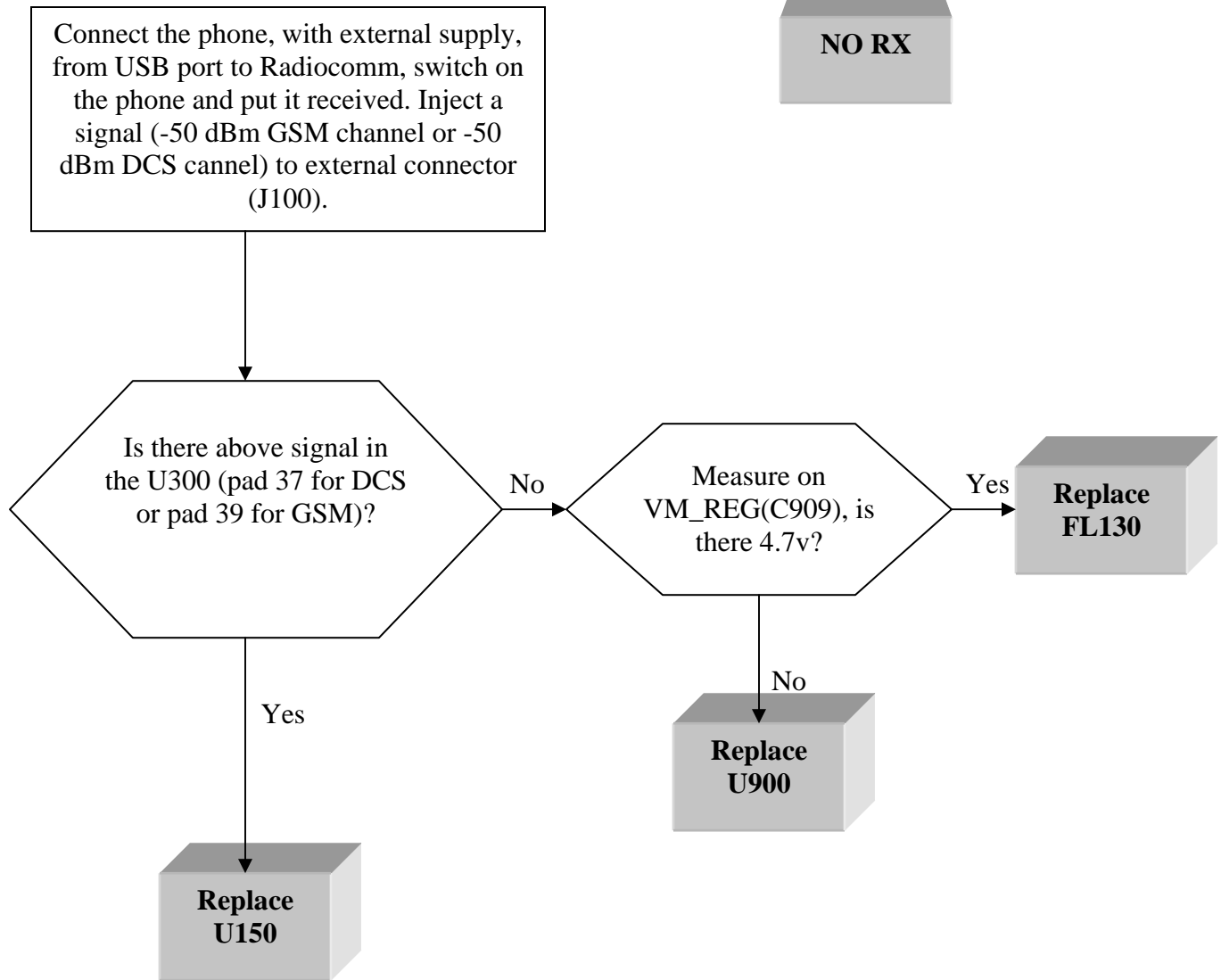














C250
Debug Guide Level3
Motorola Confidential Proprietary

NOTES



C250
Debug Guide Level3
Motorola Confidential Proprietary

NOTES



PROCEDURE FOR FLASH'S RECOVER C250

- 1.- This procedure is only for no power up, power down in standby in itself or “blocked”, failures.
- 2.- Remove the R810.
- 3.- Connect the transceiver with a battery and mini-USB´port to Windows 2000 and PST program, after download this file:

R312ULS_G_09.10.1AR_gsm_flash_dev.shx
- 4.- Add R810.
- 5.- Flashing the phone with a normal flash, with a battery and mini-USB´port to Windows 2000 and PST program.
- 6.- After downloading the 44 NVM/elements, phasing the transceiver with GPGATE.
- 7.- Master Reset and Master Clear.

To read the NVM / Seem Elements from a golden unit:

- 1.- Connect the transceiver to Internal Radiocomm, INITIALIZE it and SUSPEND it.
- 2.- Select PHONE and NV/SEEM.
- 3.- In PRODUCT select the platform.
- 4.- Select READ.
- 5.- Save the NVM / elements with a product´s name

