



HDU7511037V100R001ENG C01B129

Upgrade Guide



Huawei Technologies Co., Ltd.

All rights reserved



目录

1	VERSION INTRODUCTION.....	4
1.1	VERSION HISTORY.....	4
1.2	DESCRIPTION OF SYSTEM.....	4
1.3	UPGRADE FILES.....	4
2	PREREQUISITE	6
2.1	CHECK CURRENT UPGRADE ENVIRONMENT	6
2.2	VERSION QUERYING METHOD.....	6
2.3	CONFIG PACKAGE	7
2.4	UPGRADE METHOD	7
3	UPGRAD OPERATION STEP.....	7
3.1	UPGRADE PROCEDURE THROUGH SD CARD.....	7
4	UPGRADE VALIDATE	8
4.1	VERSION DATA AND MAIN FUNCTION.....	8
4.2	BASE FUNCTION	9
5	ERROR DIS.....	9



1 Version Introduction

1.1 Version history

history	data	HD version	Info.

1.2 Description of System

Windows XP SP2,or Windows 2000

Micro-SD card (128 M or above of Sandisk, Kingstone, or Kingmax is recommended)

M2

1.3 Upgrade files

	File name	size	date	info
--	-----------	------	------	------



Main code	CustomizeEfs.bin operator_cfgdata.cfg UPDATE.APP usr_file_backup.cfg usr_nv_backup.cfg			SD card upgrade
Config package	NA			
Upgrade tool	NA			
other	NA			

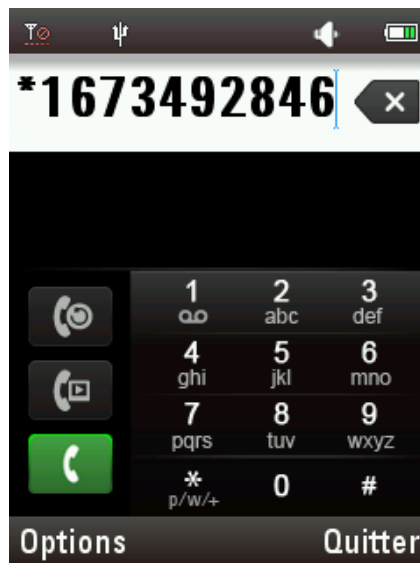
2 Prerequisite

2.1 Check current upgrade environment

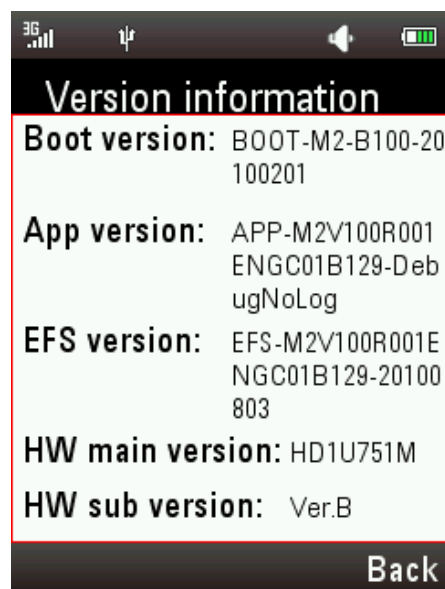
2.2 Version Querying Method

To view the phone version, do as follows:

1. In the Idle screen, enter *1673492846 and press the down scroll key, then choice 6, then select 1.



2. Check the version information. Besides the version, IMEI, SN, and LCD manufacturer information are also displayed.
- 3.





2.3 Config package

2.4 Upgrade Method

- SD card Upgrade

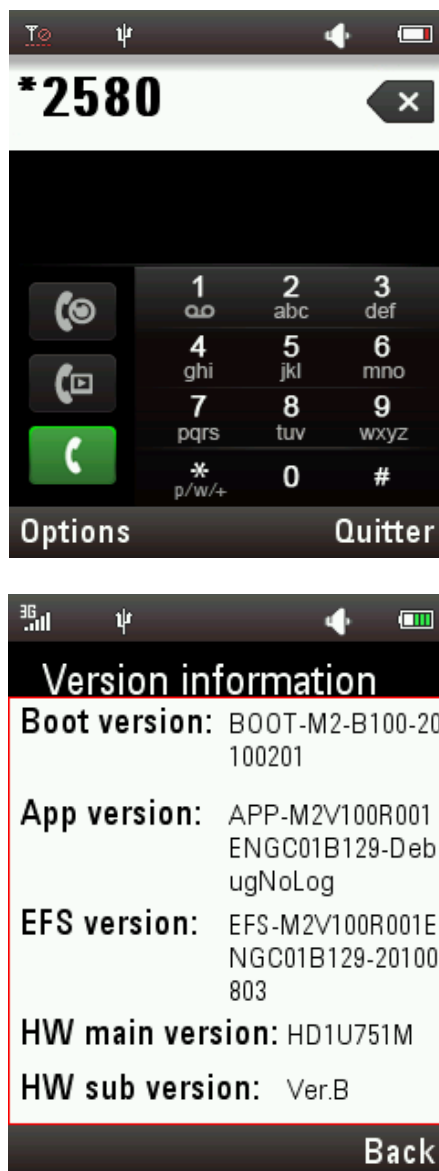
3 Upgrad operation step

3.1 Upgrade Procedure Through SD Card

(Manual upgrade: instant upgrade after inserting the SD card or upgrade after checking the upgrade condition when powering on the phone

1. Get the SD card ready. To guarantee the normal upgrade, 128 M or above of Sandisk, Kingstone, or Kingmax is recommended.
2. Format the SD card. This operation is optional. The recommended operation is: Insert the SD card in the phone and then format the phone as a flash disk.
3. Insert the SD card into the M2 and connect with PC by USB , active Udisk mode
4. Obtain the APP file to be upgraded in the version database
5. Copy the **dload** folder to the **root** folder of the SD card. then disconnect the M2 from PC.
6. Insert the SD card into the M2 that need to be updated
7. In mobile idle screen, enter *1673492846 and press the down scroll key to access the engineering mode.
8. Press 1 to select **Memory card update**
9. Press 1 to select **Update version management**
10. Press 3 to select **Software update**
11. The phone start to upgrade. Then, a progress bar is displayed twice, at the end it will choose the operator. When the upgrade succeeds, mobile will be power off.
12. Power on the phone to check whether the upgrade is successful through check whether

the version information is correct, enter *2580 and press the down scroll key check whether the version information is the same as that of the release version. :

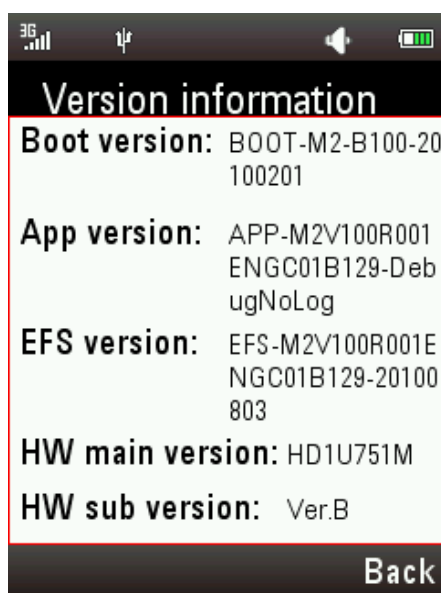


13. An “ F ” in red is displayed on the screen when an error occurs. Check whether there is a misoperation,.You can change another phone or SD card to do the test. You can also consult the contact person if necessary.

4 upgrade validate

4.1 version data and main function

- 1 Check whether the version information is the same as that of the release version.



2 Check the following functions : power on, voice call, power down

4.2 base function

NA

5 Error Dis

1) SD card upgrate ,An “ F ” in red is displayed on the screen when an error occurs. Check whether there is a misoperation,.You can change another phone or SD card to do the test.

You can also consult the contact person if necessary