



# **HUAWEI**

## **HDU7511036V100R001ENG01B124S**

### **P04 Version Upgrade Guide**



Huawei Technologies Co., Ltd.

All rights reserved



## Contents

<b>1</b>	<b>VERSION INTRODUCTION.....</b>	<b>2</b>
1.1	VERSIONS CAN BE UPGRADED.....	2
1.2	UPGRADE PREREQUISITE.....	3
1.3	UPGRADE FILES .....	3
<b>2</b>	<b>UPGRADE PREPARATION.....</b>	<b>4</b>
2.1	CHECK CURRENT UPGRADE ENVIRONMENT .....	4
2.2	CHECK THE CURRENT RUNNING VERSION .....	4
2.3	GET AND CHECK THE SOFTWARE PACKAGE.....	4
<b>3</b>	<b>UPGRADE OPERATIONS.....</b>	<b>4</b>
3.1	NORMAL UPGRADE OPERATIONS .....	4
<b>4</b>	<b>UPGRADE VALIDATE.....</b>	<b>7</b>
4.1	VERSION DATA AND MAIN FUNCTION .....	7
4.2	BASIC FUNCTION CHECK.....	7
<b>5</b>	<b>ERROR HANDLE .....</b>	<b>7</b>
5.1	ERROR 1 .....	7
<b>6</b>	<b>NOTES.....</b>	<b>7</b>
6.1	NOTES 1.....	7

## 1 Version introduction

### 1.1 Versions can be upgraded

APP version list	BOOT version list
APP-M2V100R001ENG001B112 APP-M2V100R001ENG001B113	BOOT-M2-B100-20100201



APP-M2V100R001ENG01B114  
APP-M2V100R001ENG01B115  
APP-M2V100R001ENG01B116  
APP-M2V100R001ENG01B117  
APP-M2V100R001ENG01B118  
APP-M2V100R001ENG01B119  
APP-M2V100R001ENG01B120  
APP-M2V100R001ENG01B121  
APP-M2V100R001ENG01B122  
APP-M2V100R001ENG01B123  
APP-M2V100R001ENG01B124  
APP-M2V100R001ENG01B124SP01  
APP-M2V100R001ENG01B124SP02  
APP-M2V100R001ENG01B124SP04

## 1.2 Upgrade prerequisite

The M2 handset software should be updated with the MICRO SD card.

## 1.3 Upgrade files

	File Name	File Size	Date	Usage
Host software	None			
Parameter, configuration files	None			
Update tools				
Others	UPDATE.APP CustomizeEfs.bin operator_cfgdata.cfg usr_file_backup.cfg usr_nv_backup.cfg	109 MB	2010-9-03	For M2 update: Logo+Boot+APP+QCN



--	--	--	--	--

## 2 Upgrade preparation

### 2.1 Check current upgrade environment

SD card update: Make sure that the MICRO SD card is available and can be read and write.

### 2.2 Check the current running version

In the Idle screen, enter **\*2580** and press the **down** navigation key, the board information will be showed.

### 2.3 Get and check the software package

According to the chapter 1.3, check the software package date and the file size.

## 3 Upgrade operations

For testing user, please refer to section 3.1.

For product user (Only in product line), refer to section 3.2.

### 3.1 Normal upgrade operations

Step 1. A MICRO SD card of 256MB or more should be available. The MICRO SD card made by Sandisk, Kingstone, or Kingmax is recommended.

Step 2. Format the MICRO SD card. This operation is optional.

Step 3. Unzips the **HDU7511036V100R001ENG C01B124SP04.rar** (right mouse button on it and select 'Extract here').

Step 4. Obtain the unzipped file (subdirectory: \dload\\*.\*) to be upgraded.

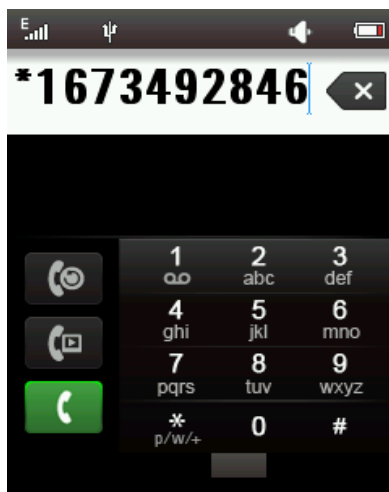
Step 5. Copy the dload folder (**with CUSTOMIZEEFS.BIN; operator\_cfgdata.cfg; UPDATE.APP; usr\_file\_backup.cfg; usr\_nv\_backup.cfg in it**) to the root directory of the Micro SD card.

Step 6. Insert the Micro SD card into the handset to be updated. **Please make sure**

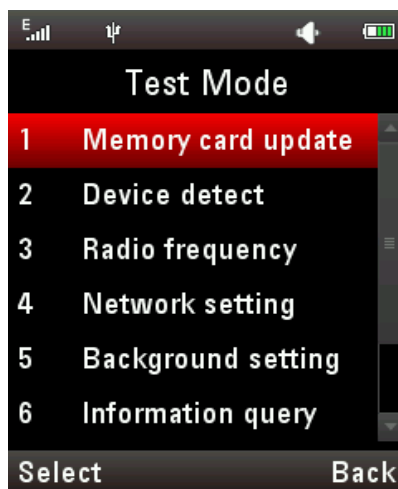
that a valid SIM/USIM card is inserted.

Step 7. Make sure that the handset to be updated was powered on and being in idle state.

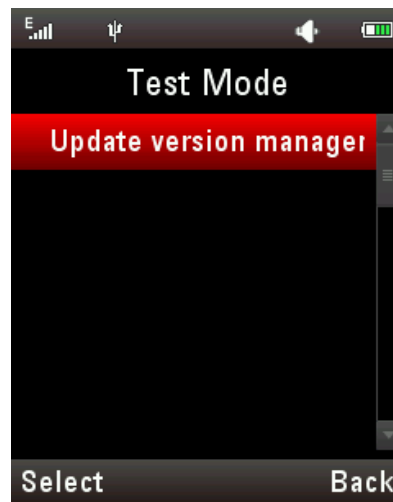
Step 8. Enter \*1673492846 and press the down navigation key to enter the engineering mode, then select “1”, “1”, “3” step by step as follow pictures.



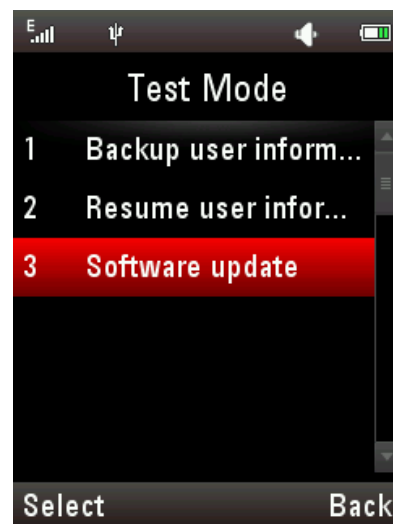
Pic1



Pic2



Pic3



Pic4

Step 9. The handset will restart automatically and enter into the increment upgrade (upgrade the corresponding parameter) interface when the HUAWEI Logo shows.

Step 10. After the increment upgrade finished, the handset will restart automatically again and shows "Reset to factory setting". The handset will switch off when reset factory setting successfully.

Step 11. Then the upgrade is finished successfully.

## 4 Upgrade validate

### 4.1 Version data and main function

In mobile idle screen, enter **\*2580** and press the **down navigation key** to check whether the version information is the same as that of the release version. :

Boot version	BOOT-M2-B100-20100201
APP version	APP-M2V100R001ENG001B124SP04-DebugNoLog
EFS version	EFS-M2V100R001ENG001B124SP04-20100903

### 4.2 Basic function check

Switch on the handset, enter the idle screen, input a dial number and make a voice call, then press the red key to power off the handset.

## 5 Error handle

### 5.1 Error 1

During SD card upgrade, an “F” in red is displayed on the screen when an error occurs. Check whether there is a miss-operation, You can change another phone or SD card to do the test. You can also consult the contact person if necessary

## 6 Notes

### 6.1 Notes 1

To make sure that the power of the battery is enough to run the upgrade process. Maybe you can connect the handset with the charger or the USB data cable to provide power.