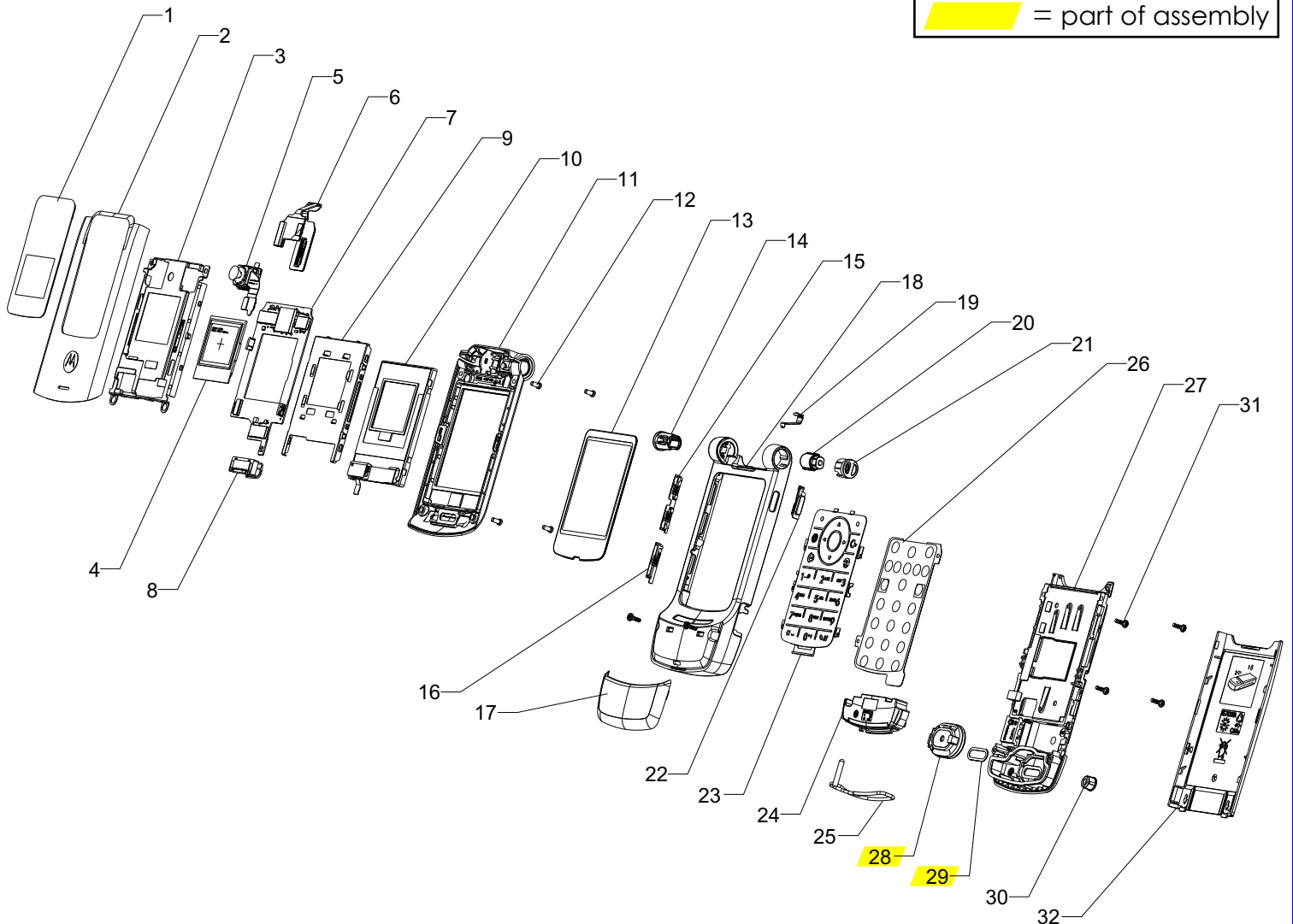


W510

Item No.	Motorola Part No.	Description
-	0171359A01	Flip Front Housing Assy Dark Pearl Grey
1	6171356A01	Lens CLI Display
2	0170388N01	Flip Cover Dark Pearl Grey
3	0171358A01	Chassis Flip
-	1170314A96	Kapton Tape Display
4	7287518Y01	CLI Display
-	1170315F03	Adhesive CLI Lens
5	0171013J01	Camera Assy
6	8471323A41	Flex Assy
7	AALG4346AA	Flip PCB
-	1170315F07	Kapton Tape Flip PCB
8	0171289A66	Speaker
9	0171346A01	Bracket Display
10	7271359C02	Main Display
11	0170388M01	Flip Housing
12	0387726M10	Screw M1.6x2.4mm
-	3871443A01	Screw Cover Top
-	3871444A01	Screw Cover Bottom
13	6171307A01	Lens Main Display
14	1571452A01	Hinge Cap Left

Item No.	Motorola Part No.	Description
15	3871436A01	Button Volume
16	3871450A01	Button Smart
17	0171962A01	Antenna Cover Dark Pearl Grey
18	0170388P01	Front Housing Assy Dark Pearl Grey
19	4270356D03	Grounding Clip
20	5570373A02	Hinge
21	0171494A01	Hinge Cap Right
22	3871451A01	Button VR
23	3871304A01	Keypad English Dark Pearl Grey
24	0170388L01	Housing Antenna
25	8571330A01	Antenna
26	0171439A01	Mylar
27	0170388R01	Rear Housing Assy Dark Pearl Grey
28	0170298Z27	Alert Speaker
29	3571329A03	Mesh Alert Speaker
30	0570389B01	Grommet RF Dark Pearl Grey
-	3771324A05	Grommet USB Dark Pearl Grey
31	0387347Y03	Screw K15x4.7mm
-	SNN5771A	Battery
32	AAHN5651A	Battery Door Dark Pearl Grey

Table 1.00



REVISIONS	
European	2007.03.20
Level 1-2 Parts List	Version 1.0
Product Name:	W510
	Page 1 of 2

