

Ballina Hinge FPC checking method and repair action



Compal Communications, Inc.



Company Confidential



Each failure item need to check the Hinge FPC

Check process and notice:

1. Disassemble:

1-1. Take off the decorative cover (page 2)

1-2. Unscrew the screws (page 3)

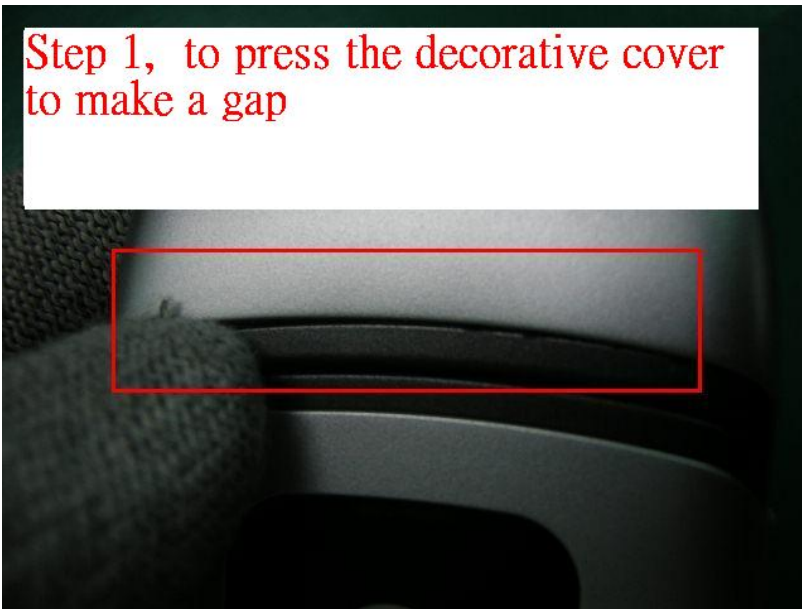
1-3. Take off the keypad lower case (page 4)

2. Check the Hinge FPC was pressed by Hinge KB



1-1. Take off the decorative cover

Step 1, to press the decorative cover to make a gap



Step 2, insert the mylar into the gap to take off the decorative cover



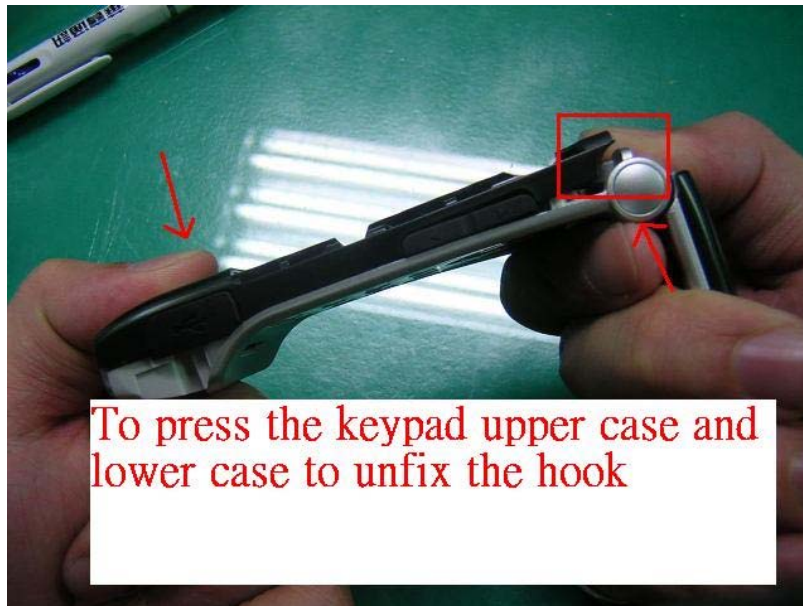


1-2. Unscrew the screws





1-3. Take off the keypad lower case





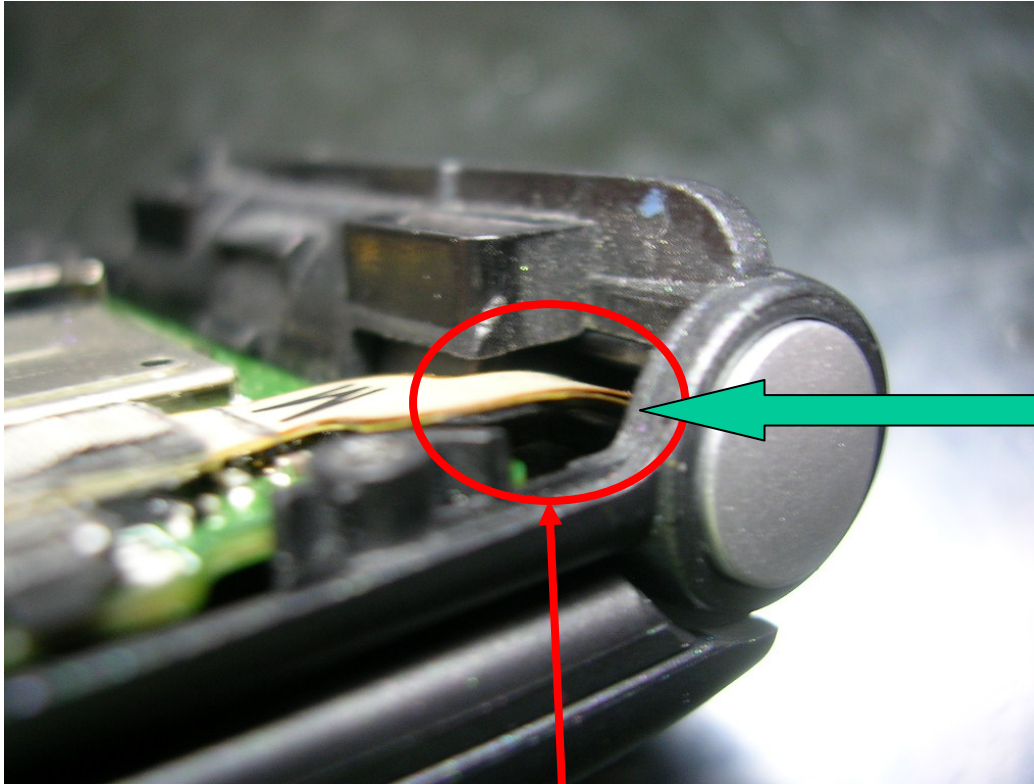
2. Check the Hinge FPC was pressed by Hinge KB

correct assembly: the Hinge FPC need to pass through the slot of Hinge KB (page 6)

Wrong assembly: the Hinge FPC was pressed by the Hinge KB (page 7)



The showed is how to differentiate the good FPC

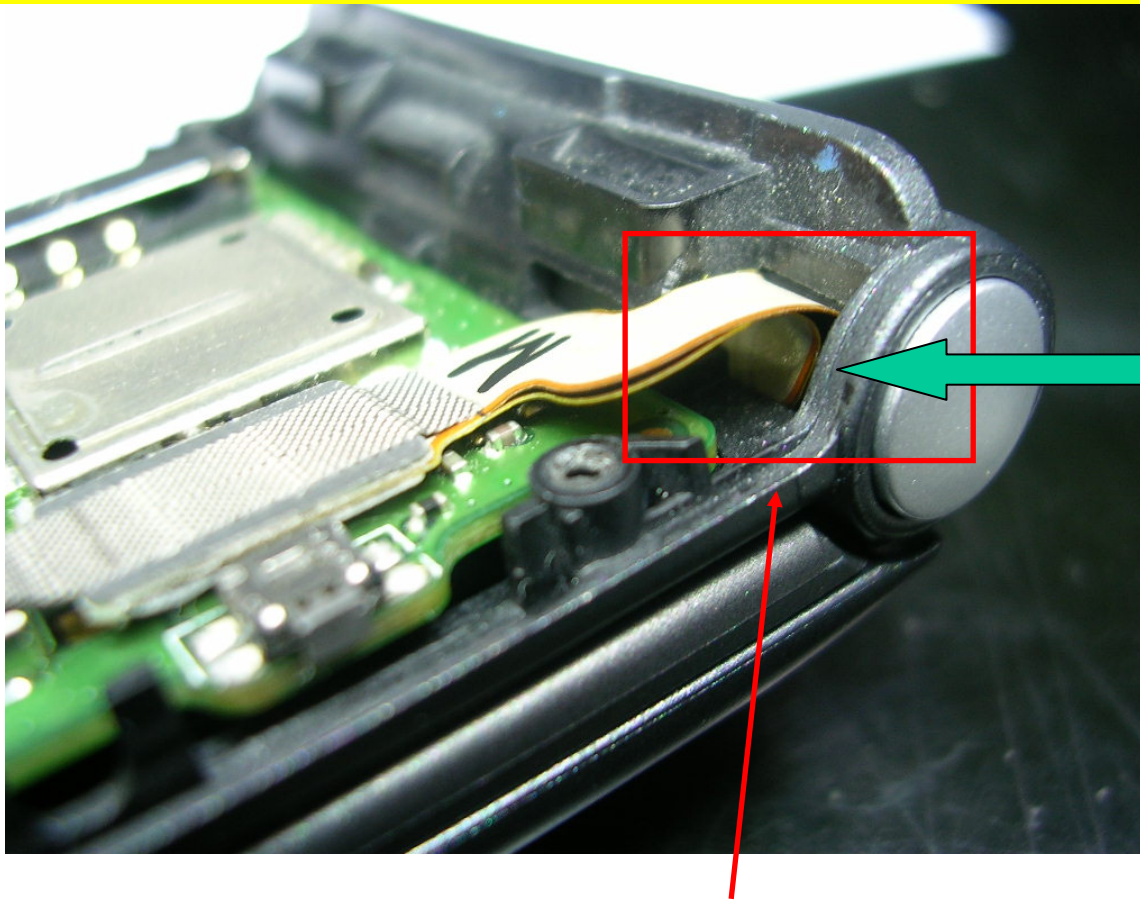


**Correct
assembly**

The Hinge FPC pass through the slot of Hinge_Kb.



The showed is how to differentiate the bad FPC



**Wrong
assembly**

The Hinge FPC was pressed by Hinge-Kb



Repair action

Exchange process and notice:

- 1. Disassemble the Hinge FPC**
- 2. Reassembly the Hinge FPC**

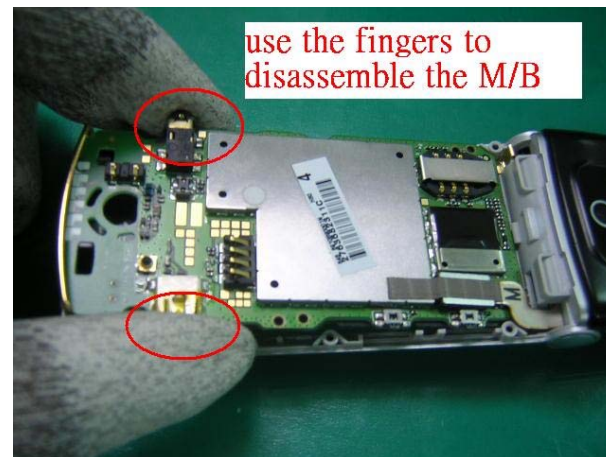
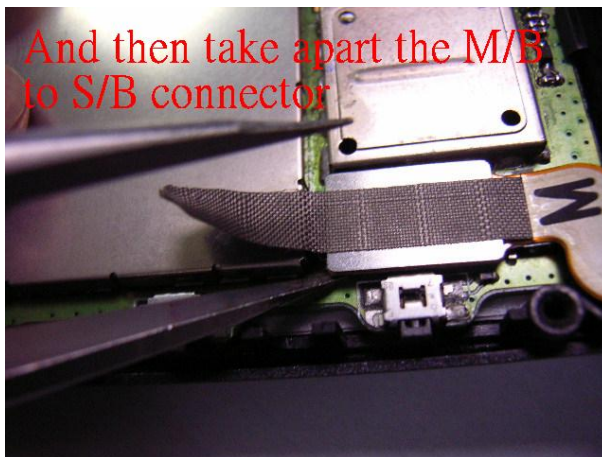
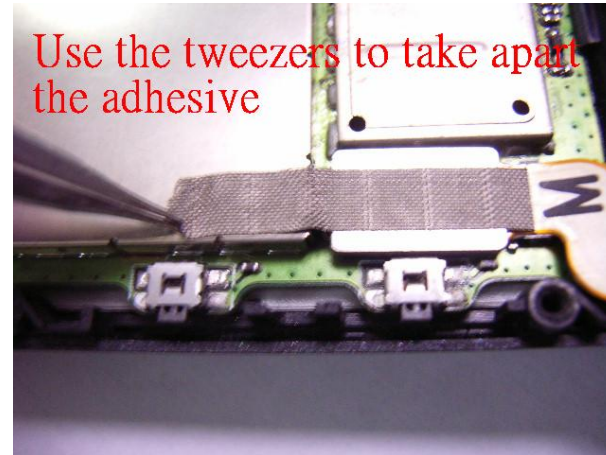
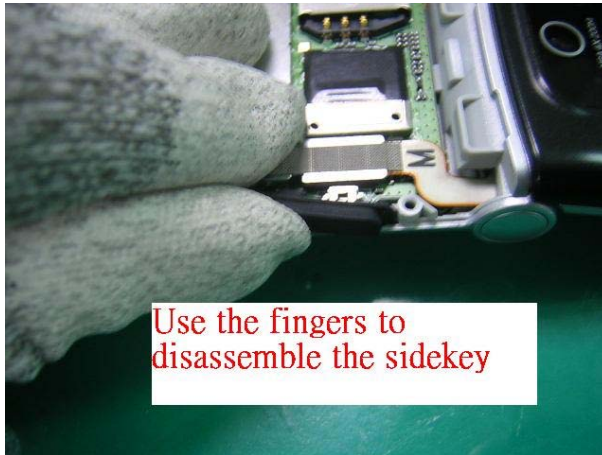


1. Disassemble the Hinge FPC

- 1-1. Take off the side key and disconnect the Hinge FPC connector and then take off the M/B (page 10)**
- 1-2. Take apart the KB spring and lanyard (page 11)**
- 1-3. Unscrew the display screws and then take off the display lower case (page 12)**
- 1-4. Take off the Hinge KB (page 13)**
- 1-5. Take apart the keypad upper case and display upper case (page 14)**
- 1-6. Take off the Hinge FPC (page 15)**

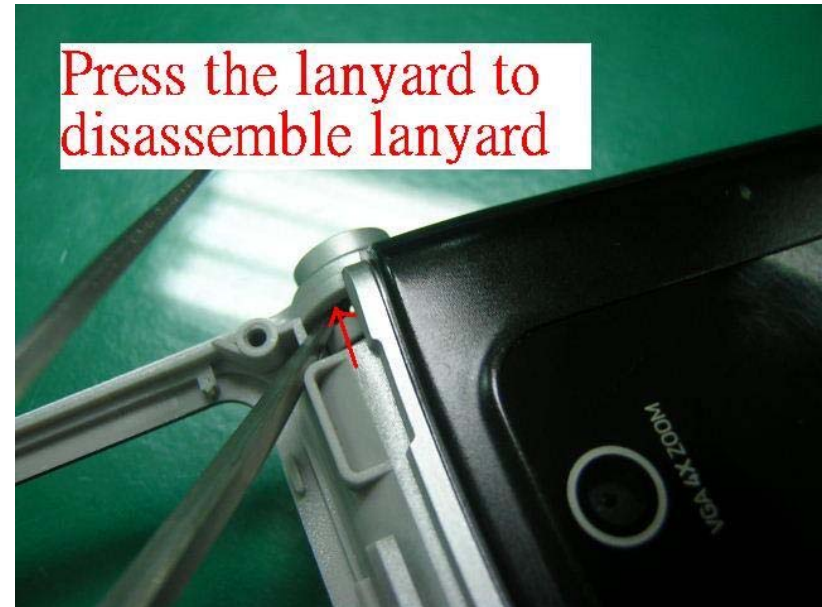


1-1. Take off the side key and disconnect the Hinge FPC connector and take apart the M/B



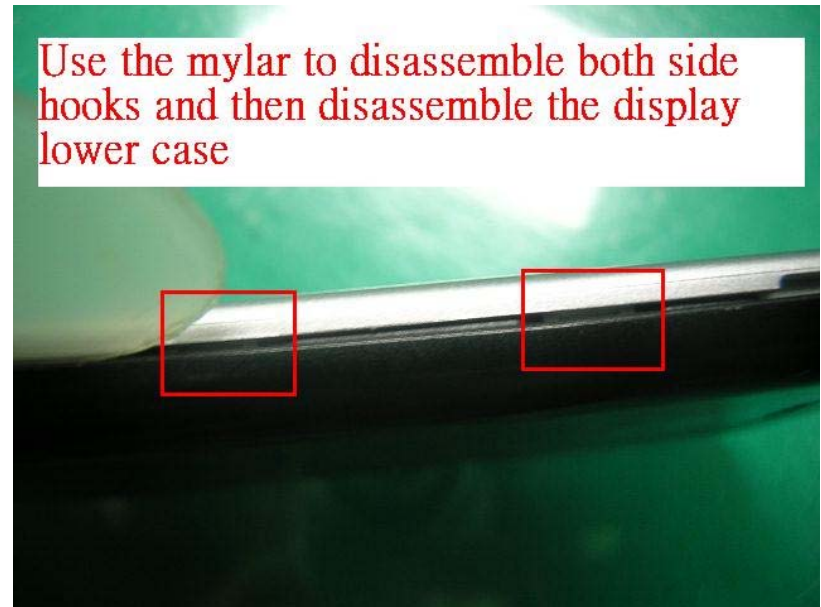
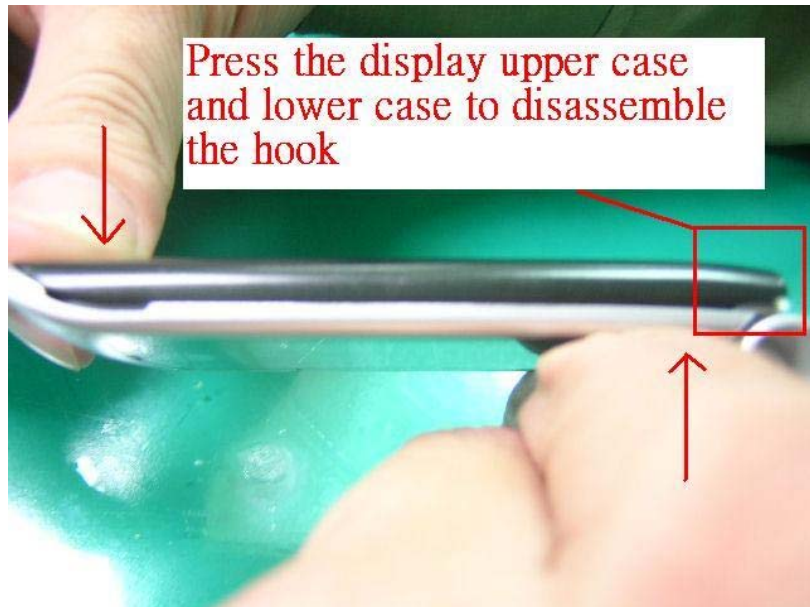


1-2. Take apart the KB spring and lanyard





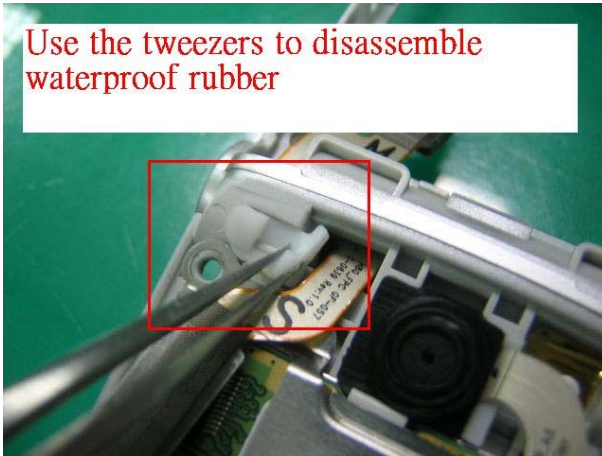
1-3. Unscrew the display screws and then take off the display lower case





1-4. Take off the Hinge KB

Use the tweezers to disassemble waterproof rubber

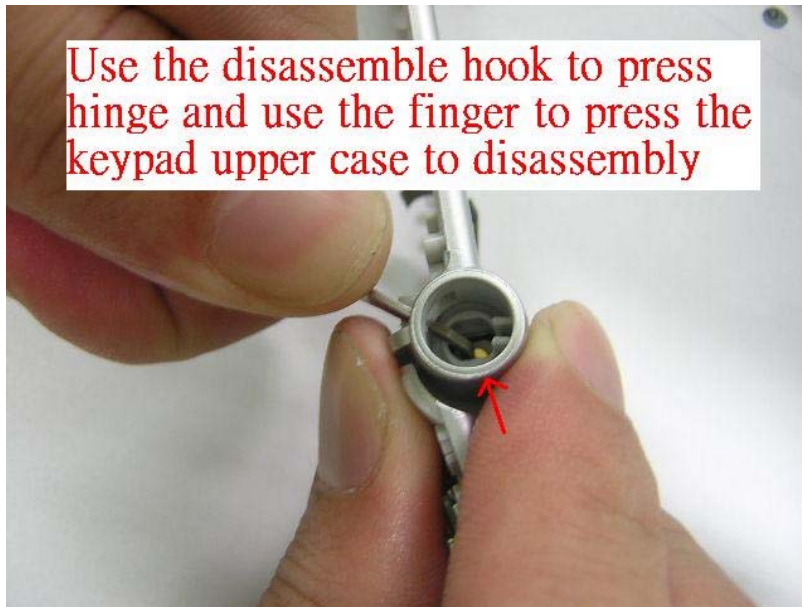


Use the disassemble hook to disassemble the hinge KB





1-5. Take apart keypad upper case and lower case

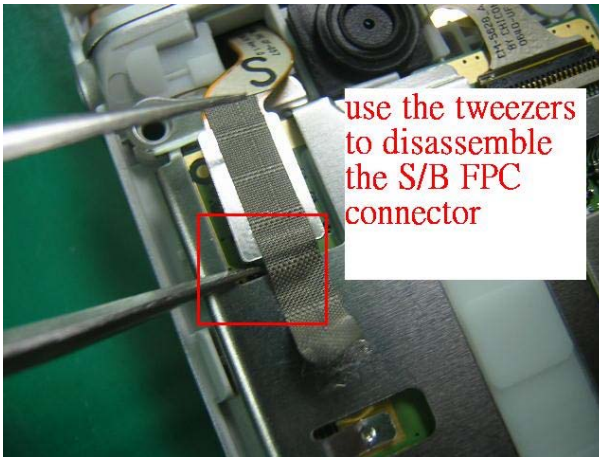




1-6. Take off the Hinge FPC



use the tweezers
to take apart the
adhesive



use the tweezers
to disassemble
the S/B FPC
connector



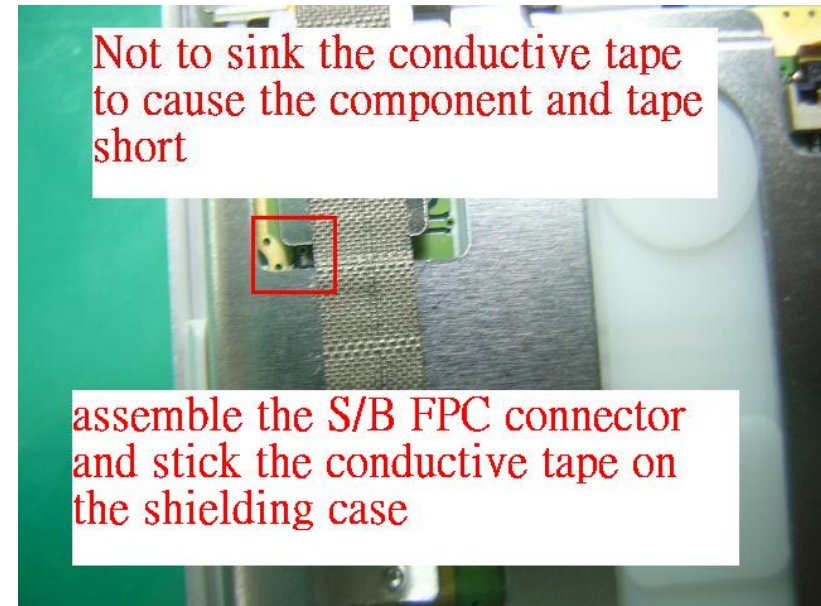
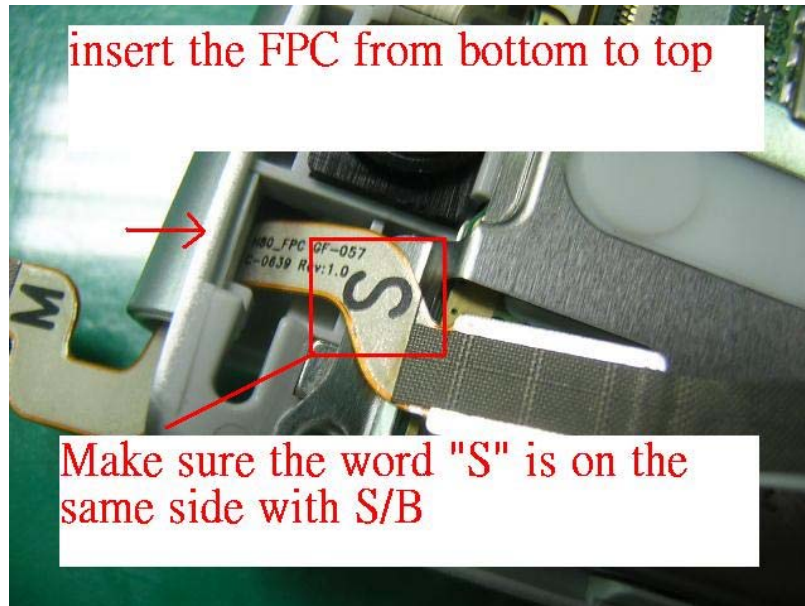


2. Reassembly the Hinge FPC

- 2-1. Assemble the Hinge FPC connector (page 17)
- 2-2. Assemble the display lower case and tighten the screws (page 18)
- 2-3. Assemble the keypad upper case and display upper case (page 19)
- 2-4. Assemble the Hinge KB (page 20)
- 2-5. Assemble the keypad and then assemble the lanyard and KB spring (page 21)
- 2-6. Assemble the M/B and keypad lower case and then tighten the screws (page 22-25)
- 2-7. Assemble the decorative cover (page 26)

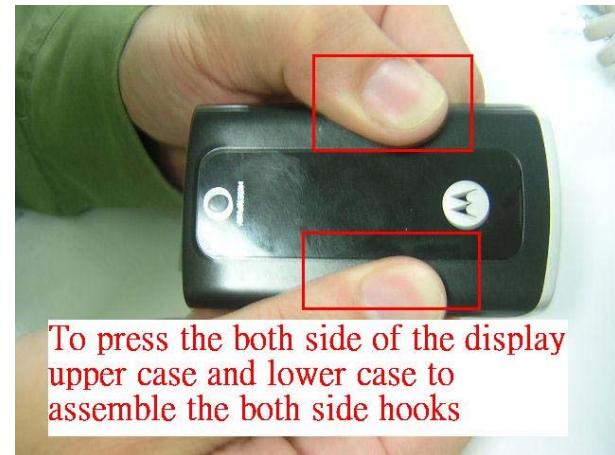
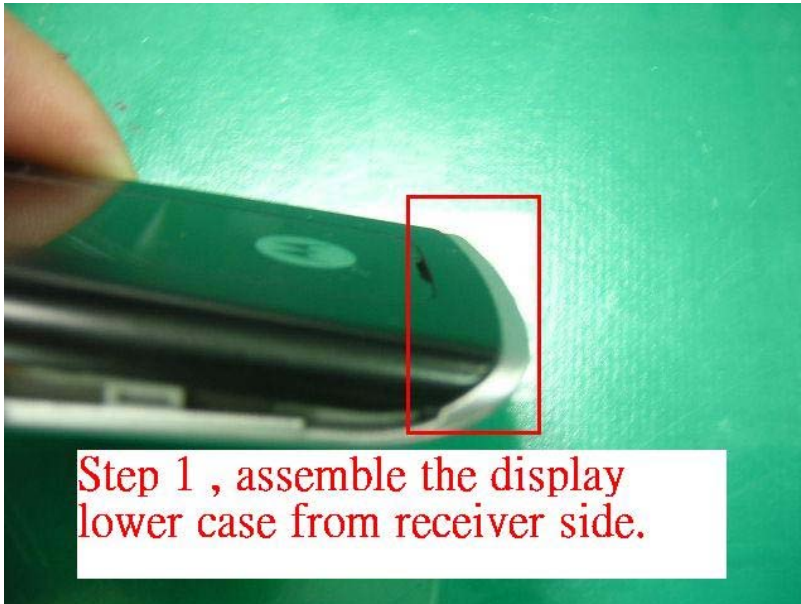


2-1. Assemble the S/B FPC connector





2-2. Assemble the display lower case and tighten the screws

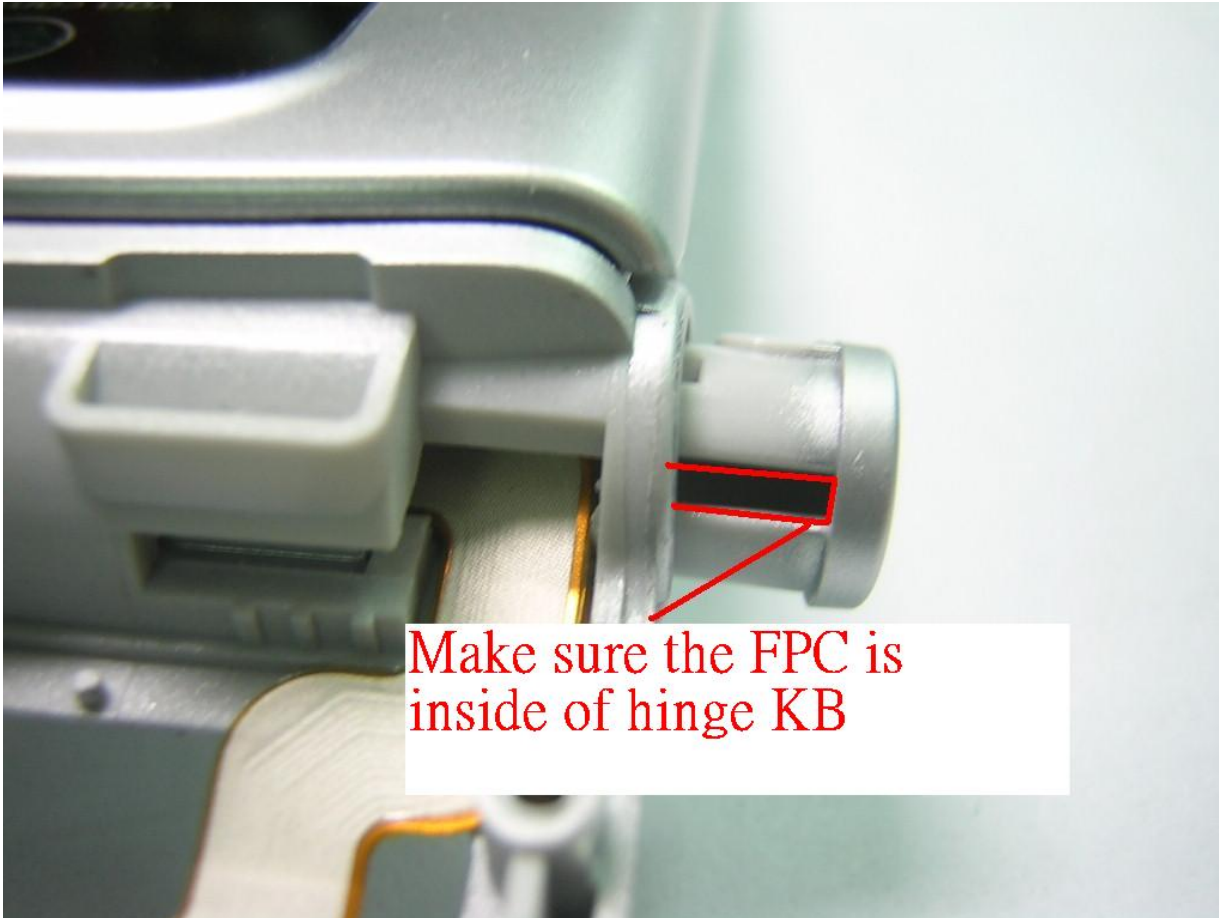




2-3. Assemble the keypad upper case and display upper case



2-4. Assemble the Hinge KB



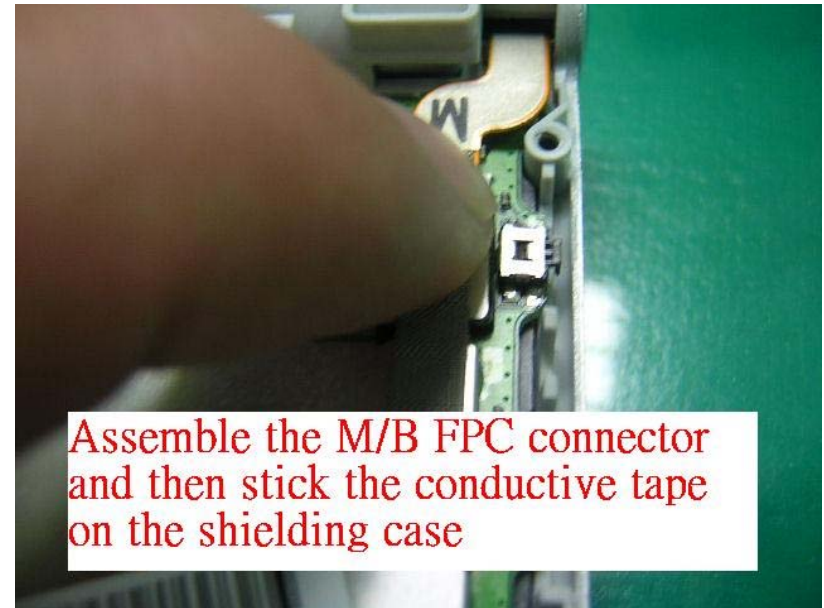
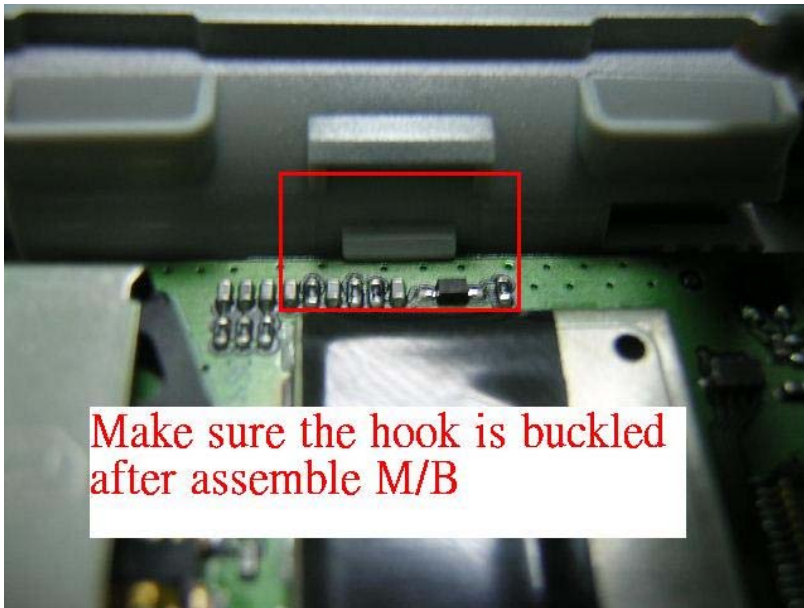


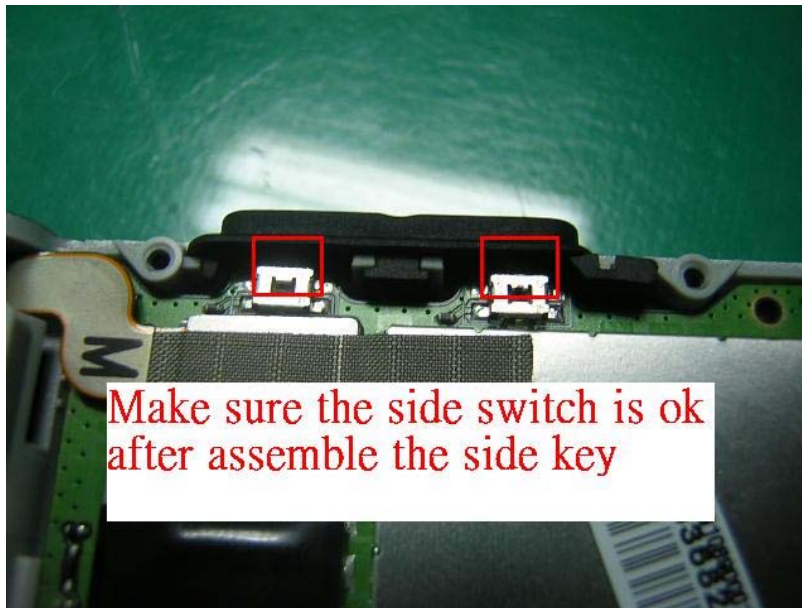
2-5. Assemble the keypad and then assemble the lanyard and KB spring

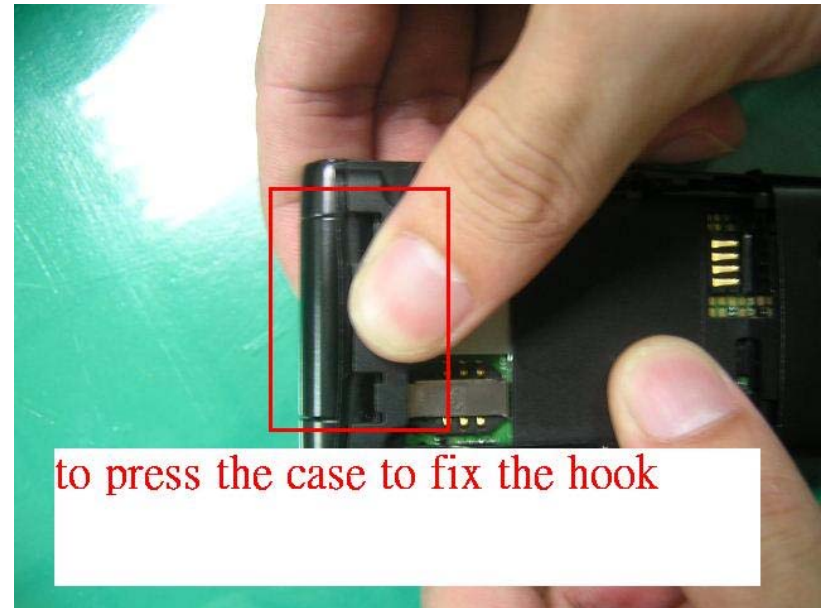




2-6. Assemble the M/B , Hinge FPC, side key and then assemble the keypad lower case and tighten the screws











7. Assemble the decorative cover

