



DEBUG GUIDE
V220
LEVEL 3

INDEX

No power up.....	Page 3 y 4
No Tx.....	Page 5
No Rx.....	Page 6
Procedure for replacing Flash.....	Page 7 y 8
Procedure for reflashing.....	Page 9



V220
Debug Guide Level 3
Motorola Confidential Proprietary

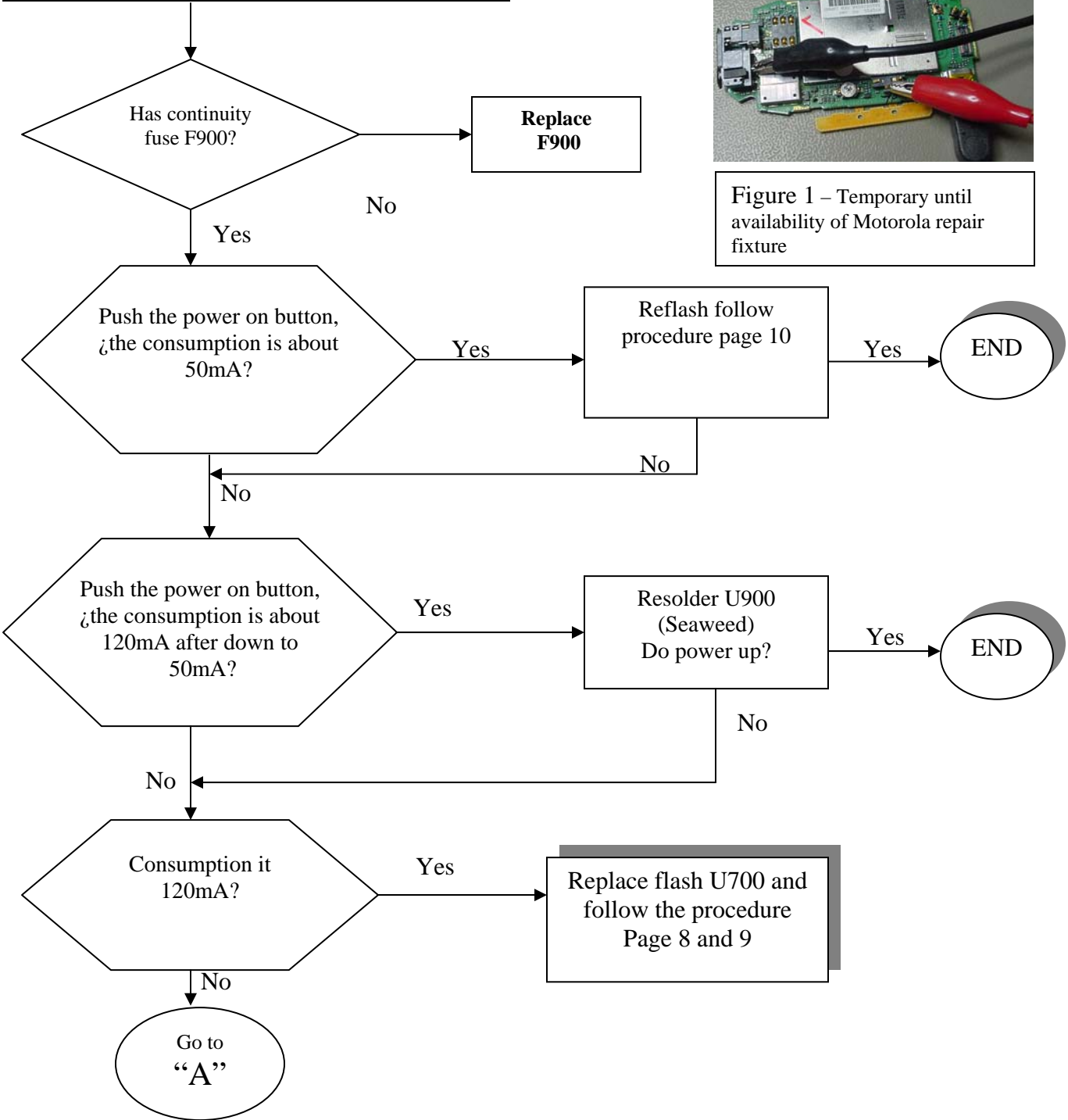
Version	Modification	Date
Versión 1.1	1st release	19-11-04

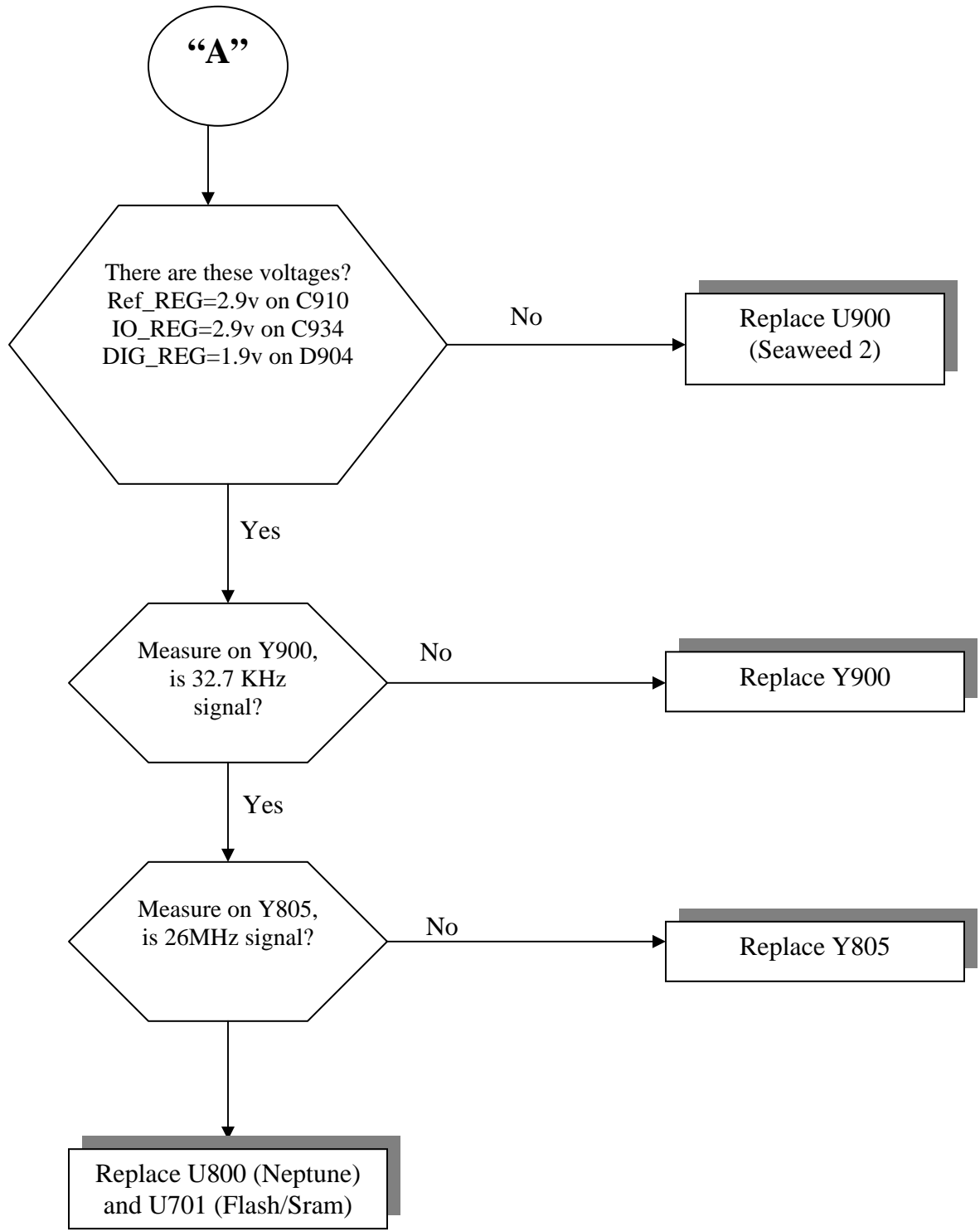
**NO
POWER UP**

Connect PCB to Radiocomm with cable P/N: SKN6371B and external power supply to 4.2 v. see figure 1



Figure 1 – Temporary until availability of Motorola repair fixture



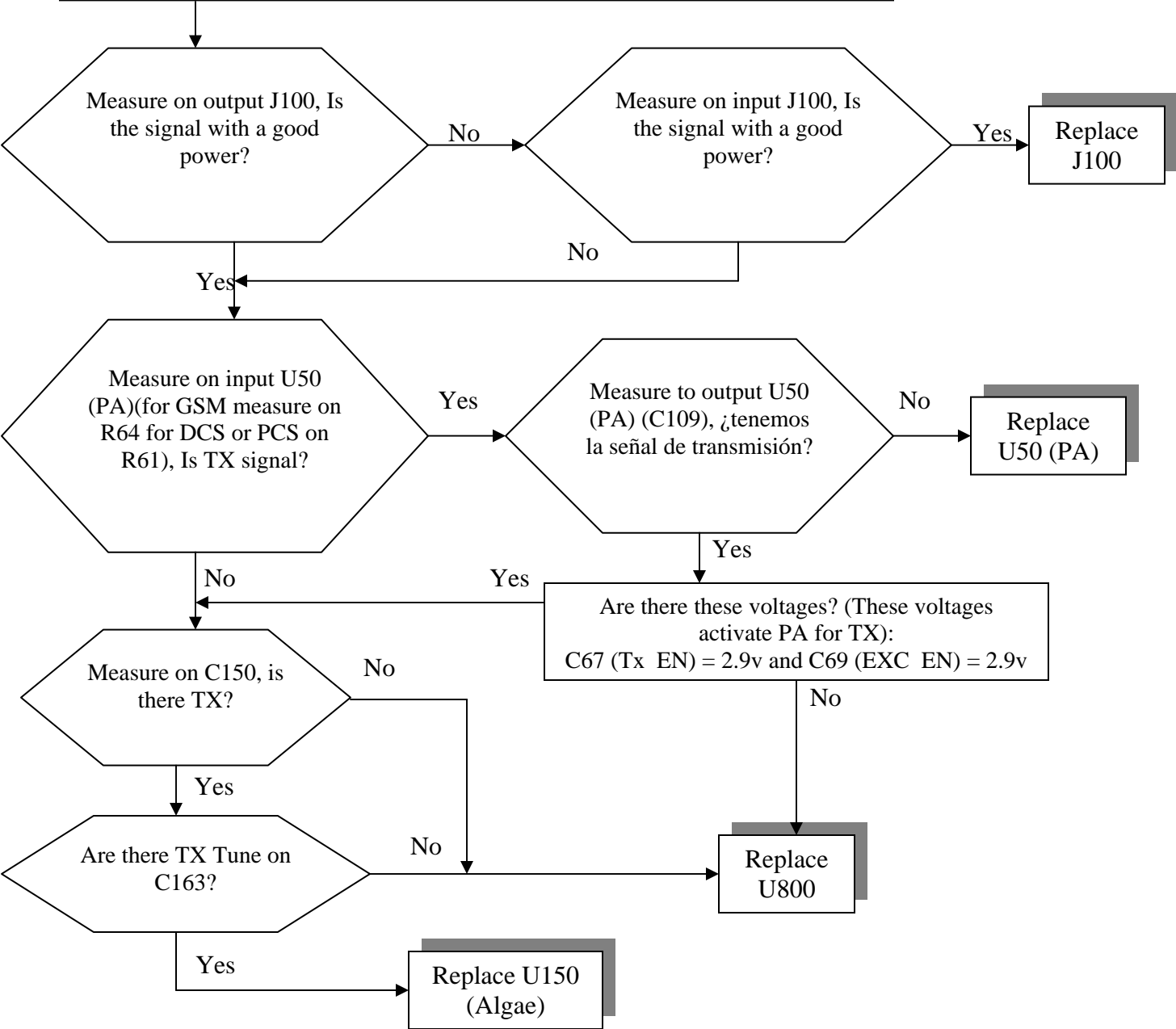




Use this procedure to set TX in any band (GSM, DCS, etc). Main difference between setting bands is:

- Set band with Radiocomm.
- Set channels (accordingly to band selected) with Radiocomm.

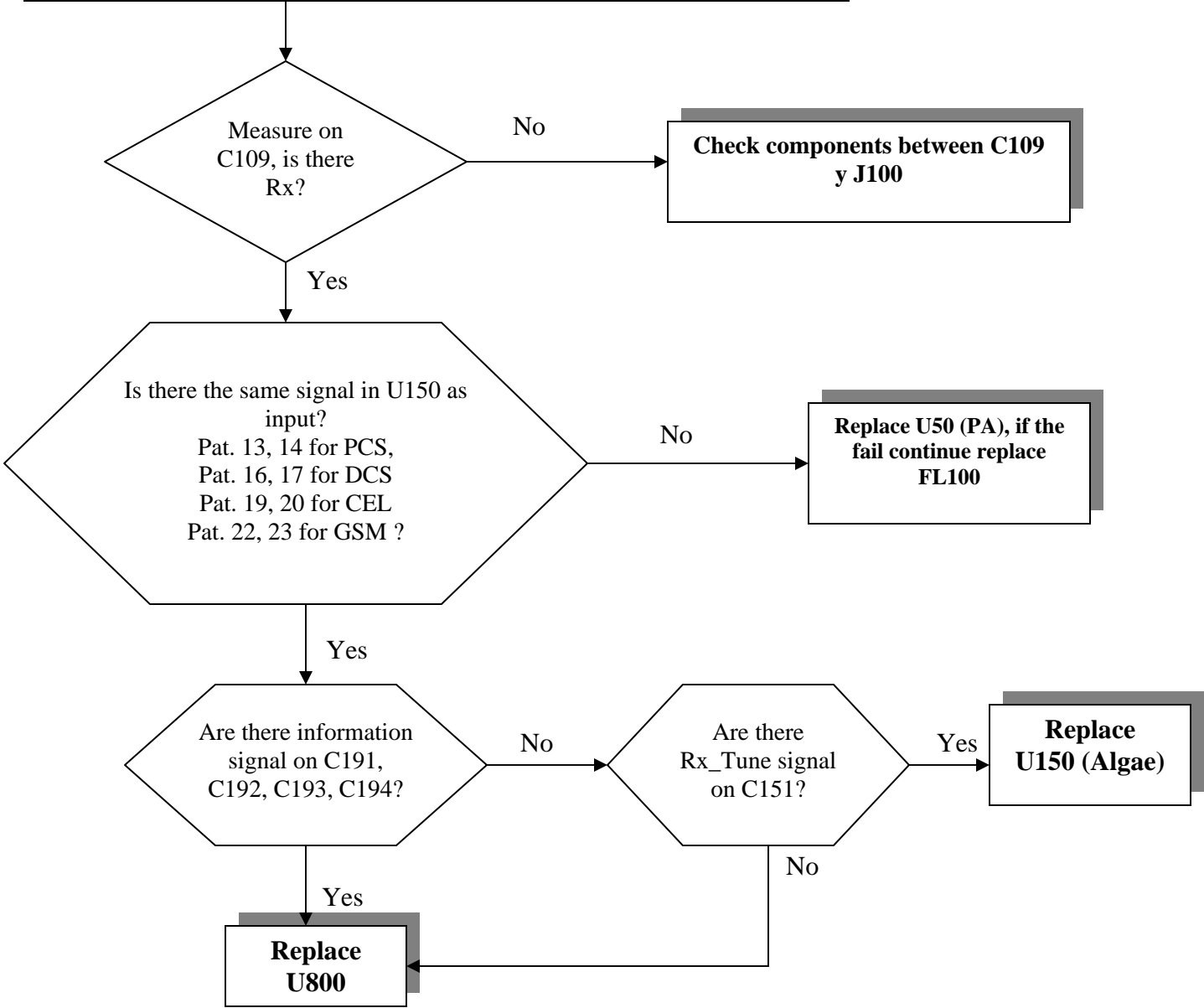
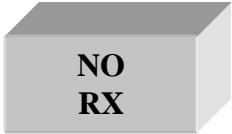
Connect the PCB to Radiocomm with USB's cable P/N: SKN6371B and supply it with external supply (4,2 v) see figure 1. Put it to transmit with 15 LEVEL PA and select: "00- All zeroes", in window CARRIER, select the band and channel.



Use this procedure to set TX in any band (GSM, DCS, etc). Main difference between setting bands is:

- Set band with Radiocomm.
- Set channels (accordingly to band selected) with Radiocomm.

Connect the PCB to Radiocomm with USB's cable P/N: SKN6371B and supply it with external supply (4.2 v)
 See figure 1. Inject a signal (-50 dBm GSM channel or -50 dBm DCS channel) to external connector J100.



FLASH REPLACING PROCEDURE

REQUIREMENTS: FOR THIS PROCEDURE WE USE,
 WINDOWS 2000, PST 6.8 or RSD AND RADIOCOMM 7.1.1 or higher ALWAYS

1. – Connect phone to PC with WIN 2000 and PST 6.8 or higher (or RSD) and download this software:

R364_G_0B.D1.09R_LP0003_DRM0001_GMIC380001AA07C_image.shx

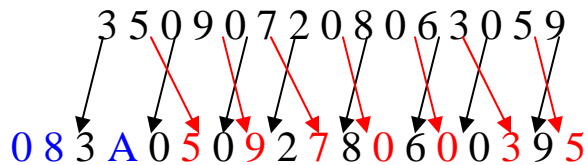
2. - Then restore IMEI, with Radiocomm 7.1.1:

- Put the PCB in suspend mode.
- Click in “GSM 2”
- In STELEM/RDELEM write that information:

Element ID	0004
Record #	0001
Record Offset	0000
Length	0009
Data	XXXXXXXXXX IMEI *Note

*Note: Example for writing an imei:

Pcb’s Imei



For write in Data:

-Click on STELEM

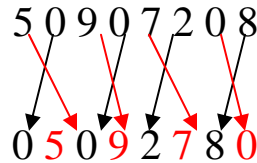
3. - Then restore Subsidy Lock, with Radiocomm 7.1.1:
- Put the PCB in suspend mode.
 - Click in “GSM 2”
 - In STELEM/RDELEM write that information:

Element ID	0348
Record #	0001
Record Offset	0000
Length	0004
Data	xxxxxxxxxx Subsidy Lock *Note

Element ID	0349
Record #	0001
Record Offset	0000
Length	0004
Data	xxxxxxxxxx Subsidy Lock *Note

*Note: Example for writing a subsidy lock:

Pcb’s subsidy lock



For write in Data:

-Click on STELEM

4. - Then restore all NVM elements, with Radiocomm 7.1.1
5. - After downloading last software’s version, phasing the transceiver with GPGATE and Master Reset and Master Clear.

To read the NVM / Seem Elements from a golden unit:

1. - Connect the transceiver to Internal Radiocomm, INITIALIZE it and SUSPEND it.
2. - Select PHONE and NV/SEEM.
3. - In PRODUCT select the platform.
4. - Select READ.
5. - Save the NVM / elements with a product’s name



RECOVER THE REFLASH

.- This procedure must be used for no power up, power down in standby itself or “blocked”, failures.

**REQUIREMENTS: FOR THIS PROCEDURE WE USE,
WINDOWS 2000, PST 6.8 AND RADIOCOMM 7.1.1 ALWAYS**

1. – Connect phone to PC with WIN 2000 and PST 6.8 or higher (or RSD), press keys *, # and Send and download this software:

R364_G_0B.D1.09R_LP0039_DRM0001_JPG_0B_V220_06_00_39R_SE8545AXXL408C_FDI.shx

2. - Then restore all NVM elements, with the Radiocomm 7.1.1 or higher.

3. - After downloading last software’s version, phasing the transceiver with GPGATE and Master Reset and Master Clear.