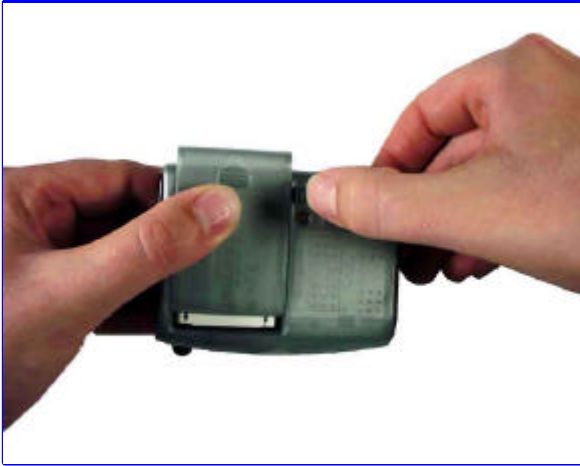


Descriptive Camelot V100 Disassembly Procedure



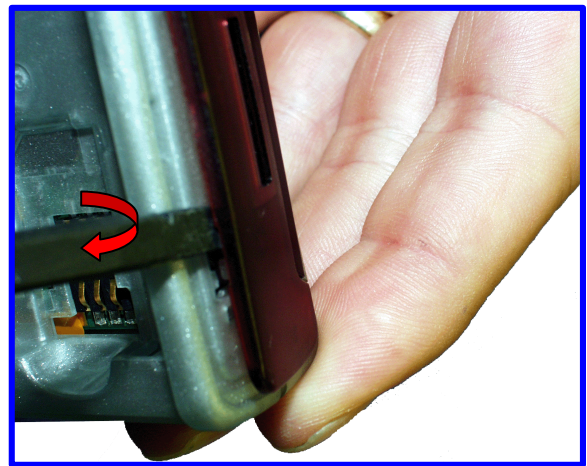
1. Remove Battery Door by sliding battery forward and up.



2. Remove battery by pushing from bottom then lifting remove SIM card if present.



3. Remove 2 retaining screws using T6 Torx driver.



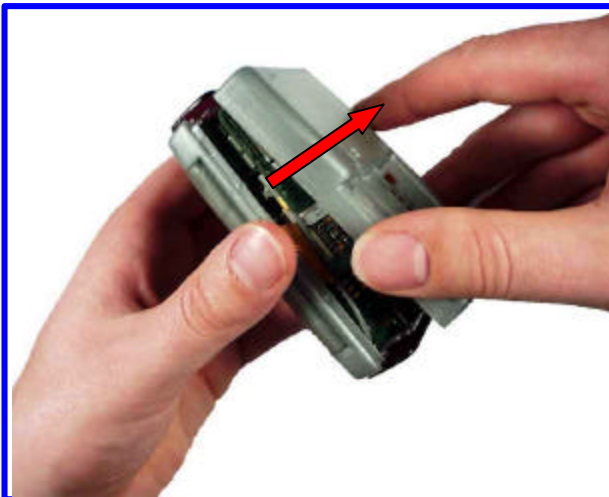
4. Push out side of unit to allow separation of front and rear housings



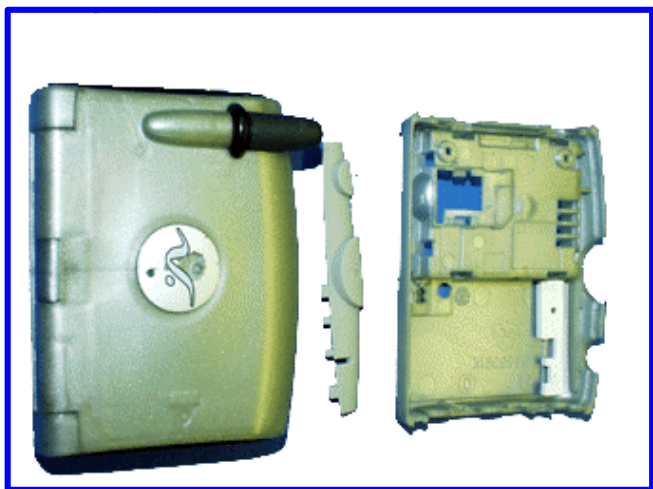
5. Repeat the process for the opposite side



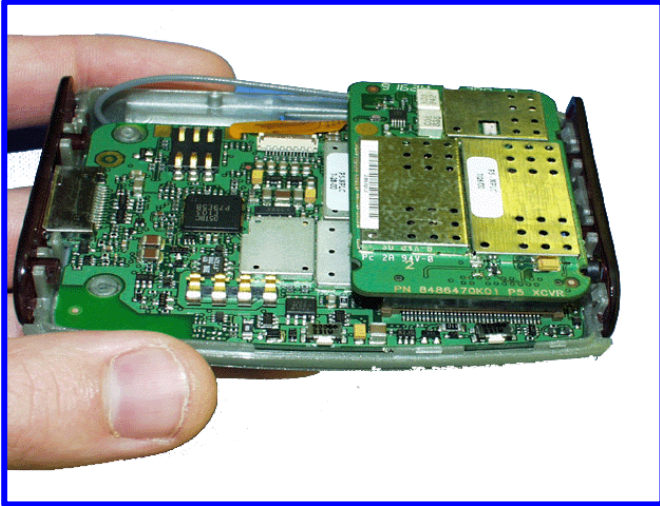
7. Opened housing



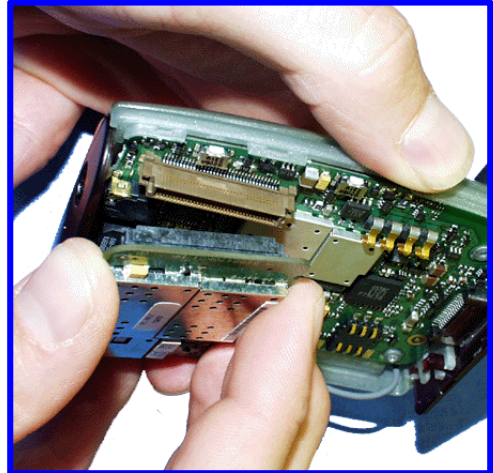
6. Carefully remove rear cover.
Note: The PCB can be lifted at this stage be which can stress the flex, ensure PCN stays in flip housing.



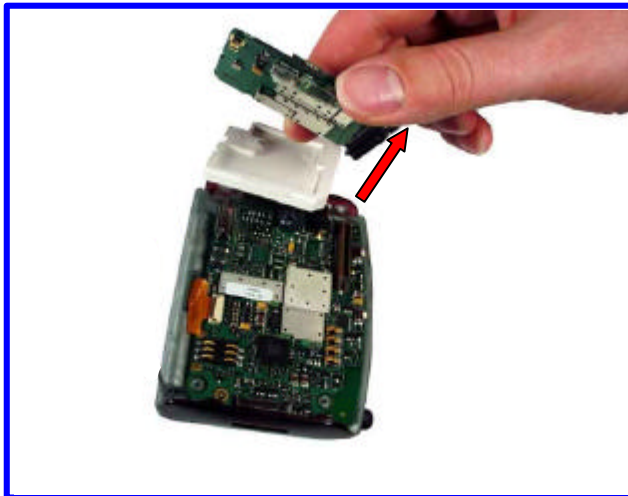
8. Rear Cover and Ok key rubber removed



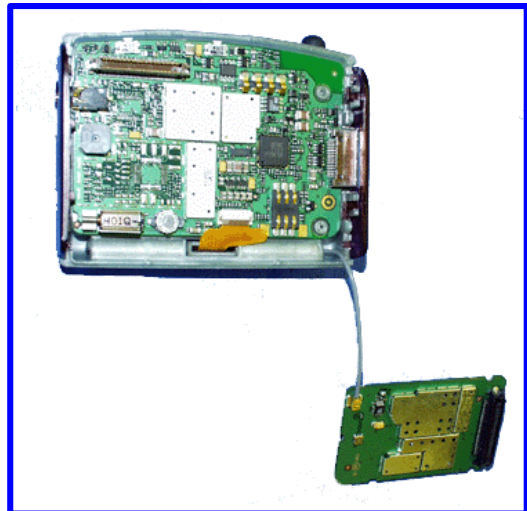
9. RF and
Controller Boards



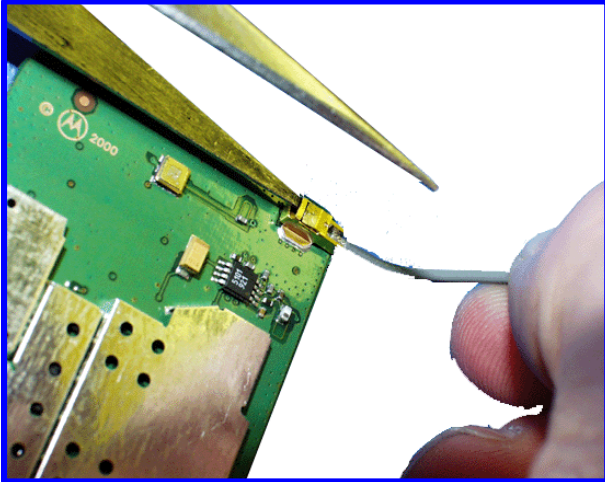
10. Remove the RF board by
slowly pulling board from
connector end in a see saw motion



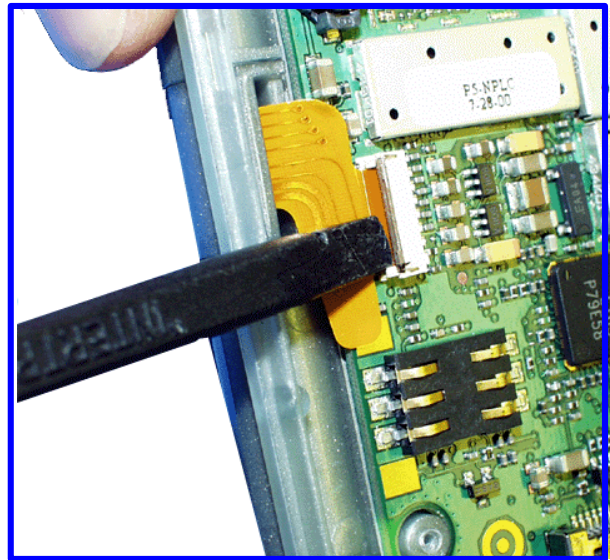
11. Once RF Board
removed also lift
rubber PCB divider



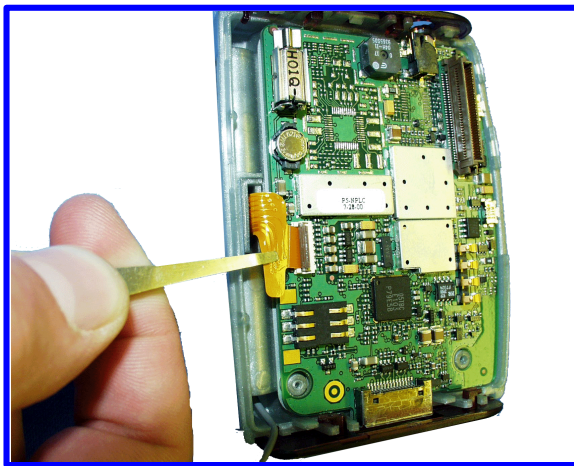
12. RF Board removed from
Controller showing RF cable



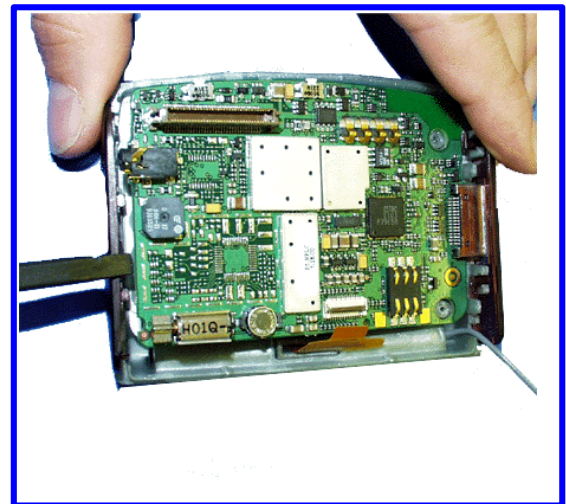
13. Carefully insert sharp nose pliers into the gap at the rear of the RF cable connector, this will lift the roof of the connector and then a slight pull on the RF cable should release it.



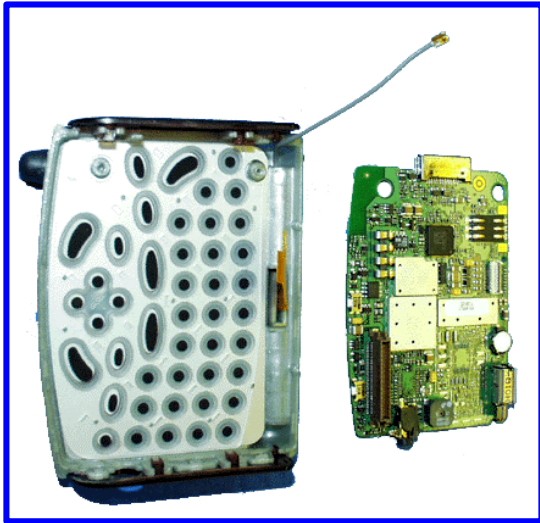
14. Use blunt end of plastic tool to prise ZIF connector open.



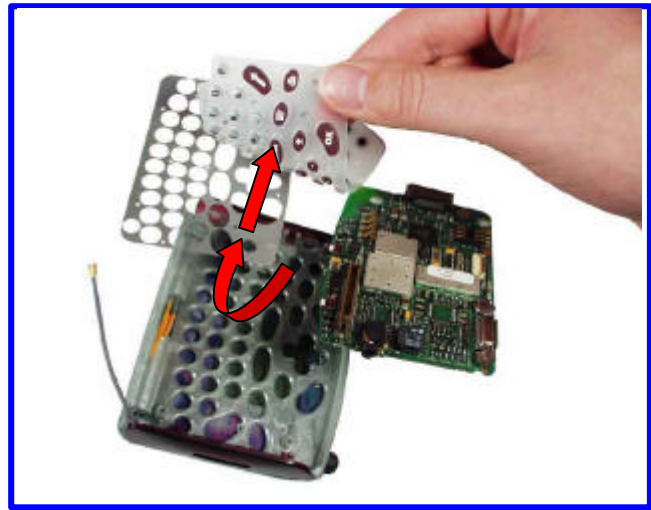
15. Very carefully using flat bladed tweezers draw the flex from the connector keeping the flex as parallel to the PCB as possible



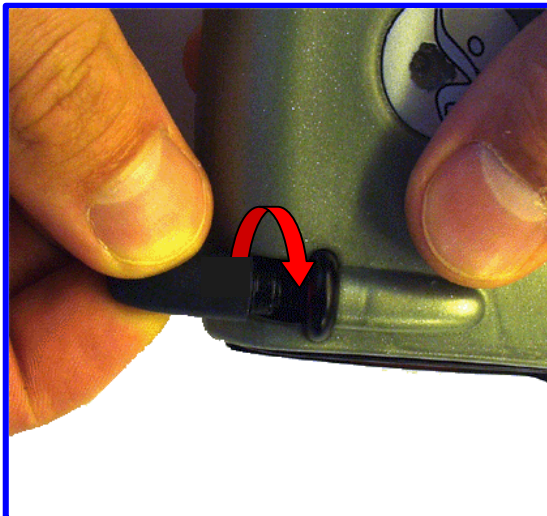
16. Prise PCB from housing ensuring headset jack does not catch housings



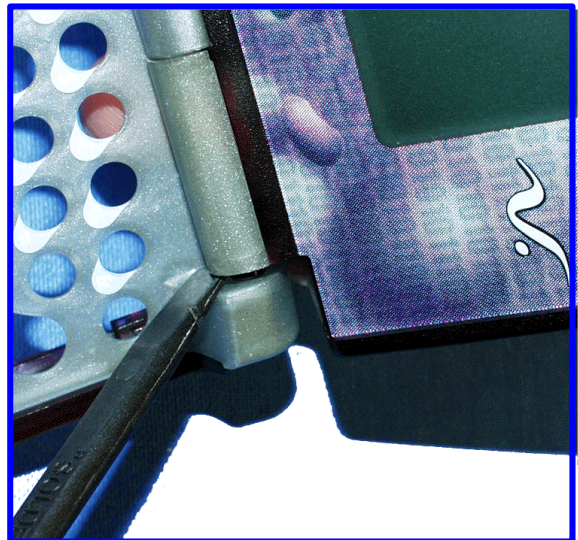
17. Controller board and Flip Assembly



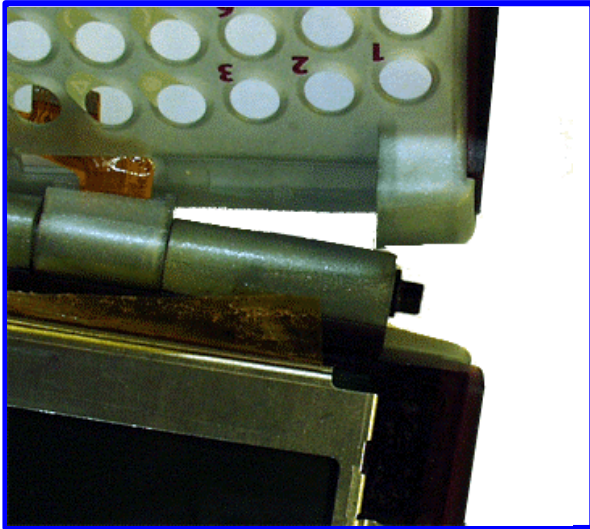
18. Remove keypad and keypad overlay



19. Remove antenna by rotating anti-clockwise.
Tool still required



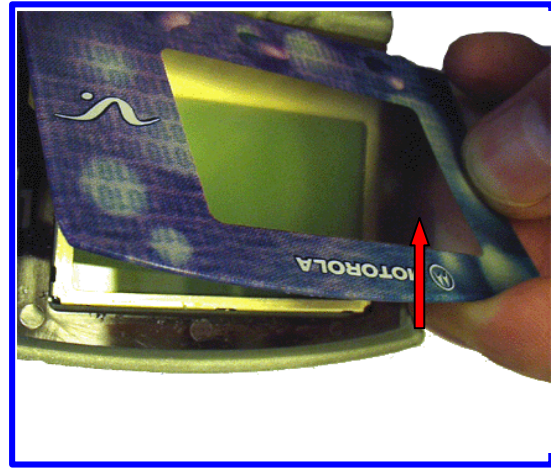
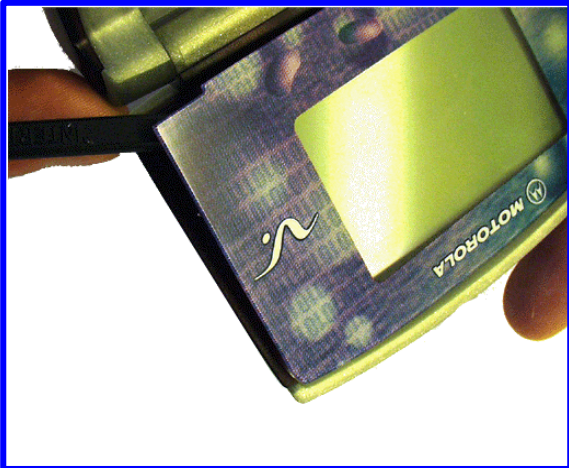
20. To part flip from front housing, slide plastic tool between hinge joint on front and flip and lever cam out of front housing



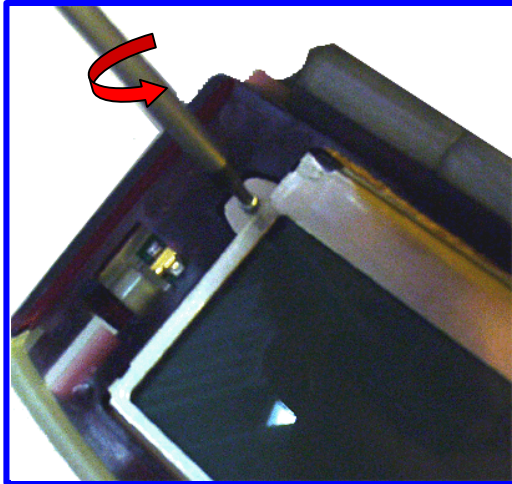
21. Feed Flex through front housing
Note: Flex can be ripped at this point.



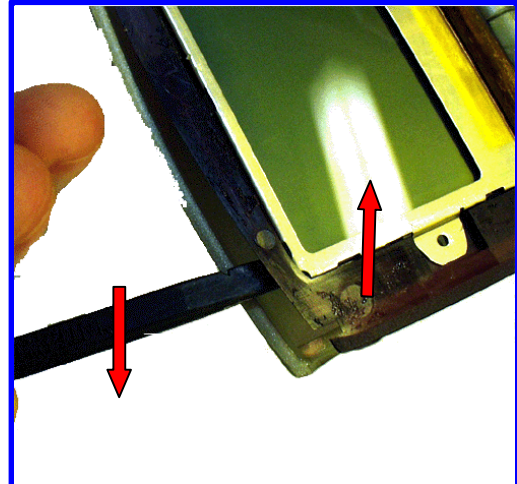
22. Feed RF Cable through Front housing



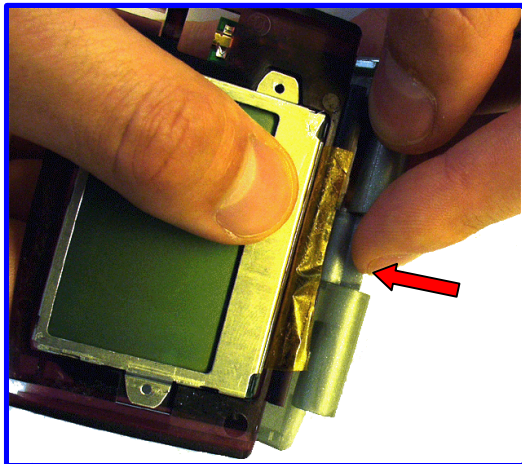
23. Remove lens using plastic tool. New lens will be required



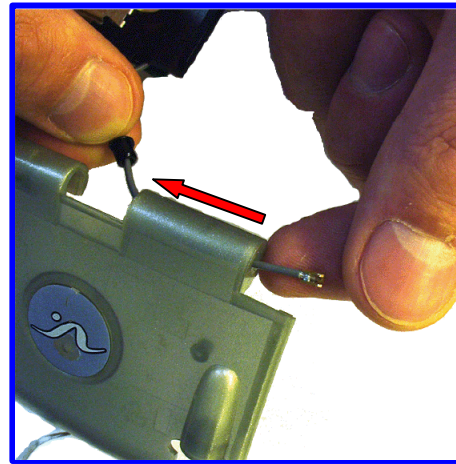
24. Unscrew the 2 LCD retaining screws using a T6 Torxdriver



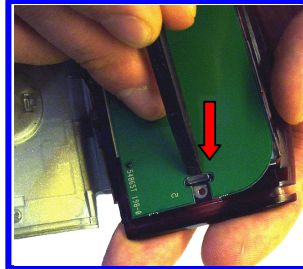
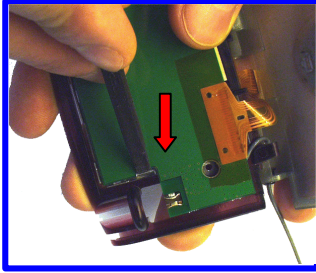
25. Prise the LCD bracket away from the flip cover by levering up and out.



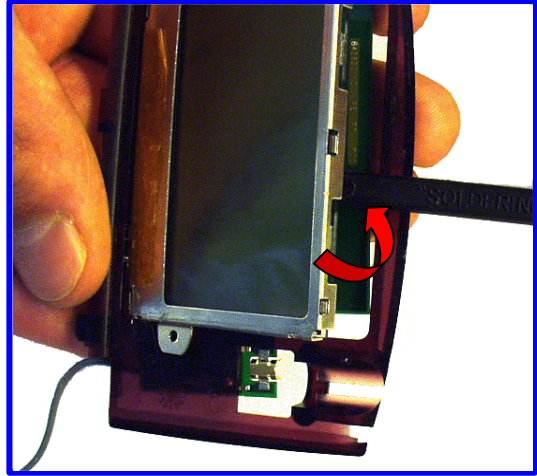
26. Push in rotating flex hinge joint. Ensure care is taken when removing joint from flex.



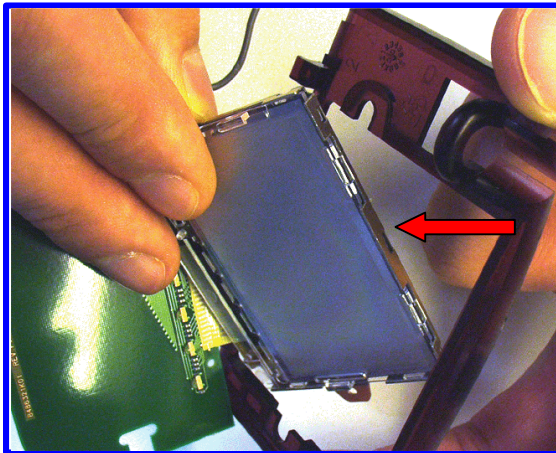
27. Carefully feed RF cable through flip hinge



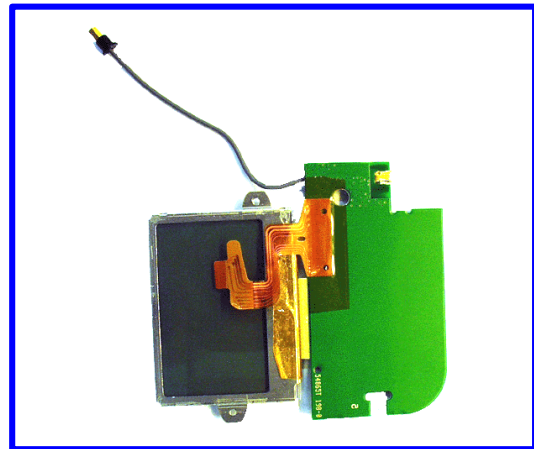
28. Push the 2 clear tabs on either side of the display PCB, to release the LCD.



29. Lever the LCD away from the bracket, this should come away without any real pressure



30. Very carefully rotate LCD whilst supporting Flex and PCB board, and guide LCD through bracket.



31. Final sub – Assembly