

DEBUG GUIDE T720i LEVEL 3

No Rx _____	pag. 2
No Rx GSM _____	pag. 3
No Rx DCS _____	pag. 4
No power up _____	pag. 5
No Tx _____	pag. 6
No Tx GSM _____	pag. 7 y 8
No Tx DCS _____	pag 7 y 9

Connect on the J5000 the P2K's cable and interconnect the pcb (A11) to a signal generator with the RF's connector (5-00-6J-10000) with a RF's cable too. Set frequency to 947.4 MHz (chanel 62) for GSM and 1842.8 MHz (chanel 700) for DCS.

NO RX

Is there on pin 5 of FL170 the signal of 400 MHZ (FI)?

No

Go to
 "C"
 pag. 3

Yes

Is there on pin 4 of U203 the signal of 800 MHZ?

No

Check the correct bias (RF_V2=2.9v) on pin 3 of U203. If is ok change U203, if is not ok replace U3000

Yes

Are there that signals?:
 R202 – Rx Serial clock (Fig.3)
 R203 – Rx Serial Data (Fig.1)
 R204 – Rx Serial frame SYNC (Fig.2)

No

Check the correct bias on U201, Vref, RF_V1 and RF_V2 all to 2.9v, if all are ok replace U201.

Yes

Resolder U1000, and replace U3000

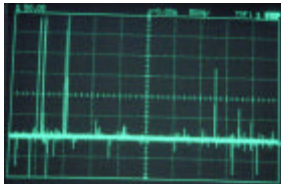


Fig. 1

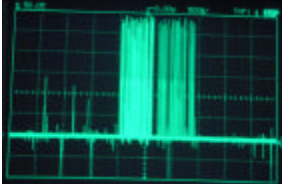


Fig. 2

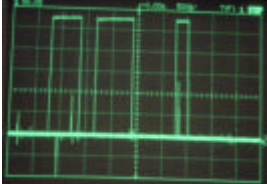
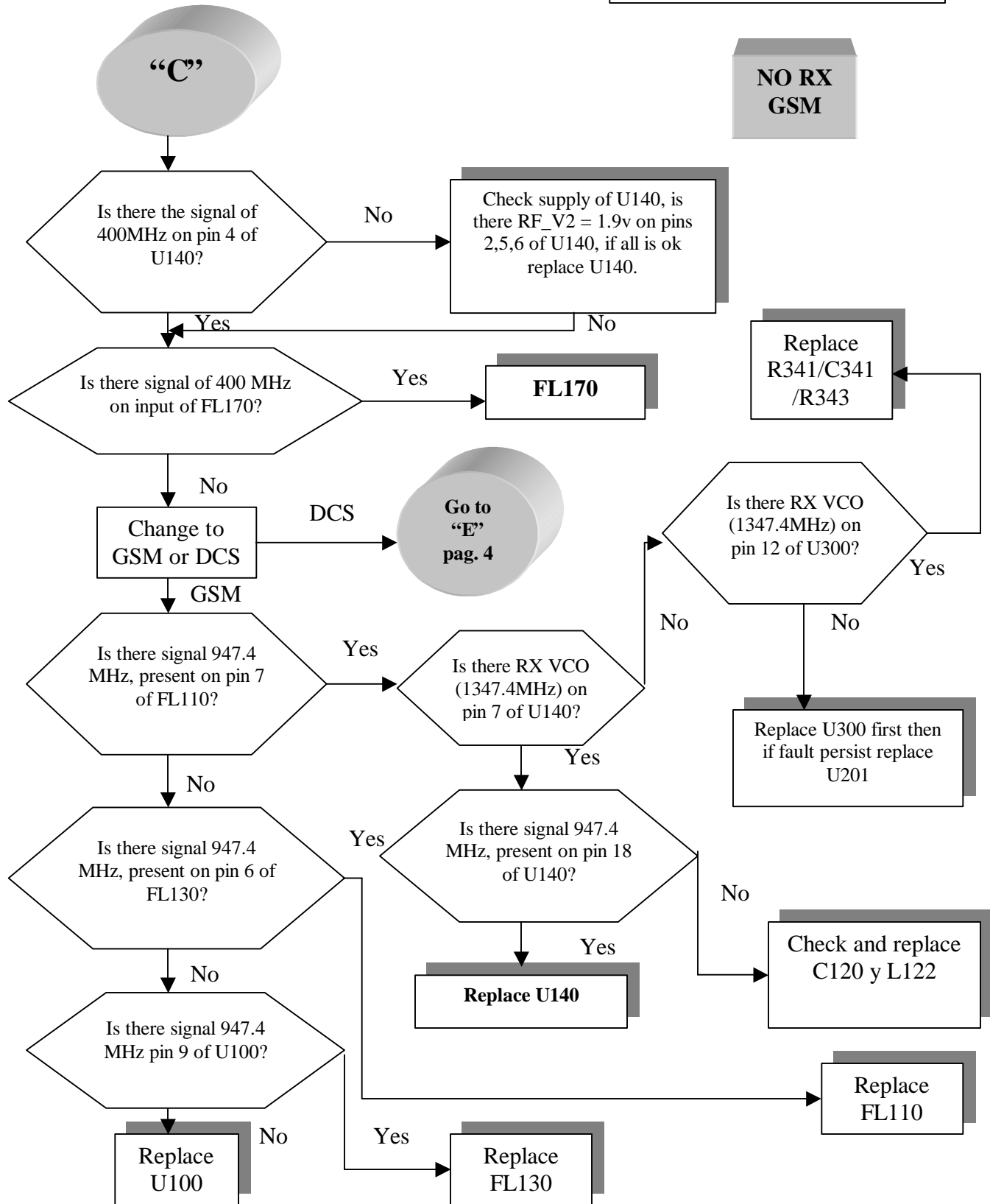
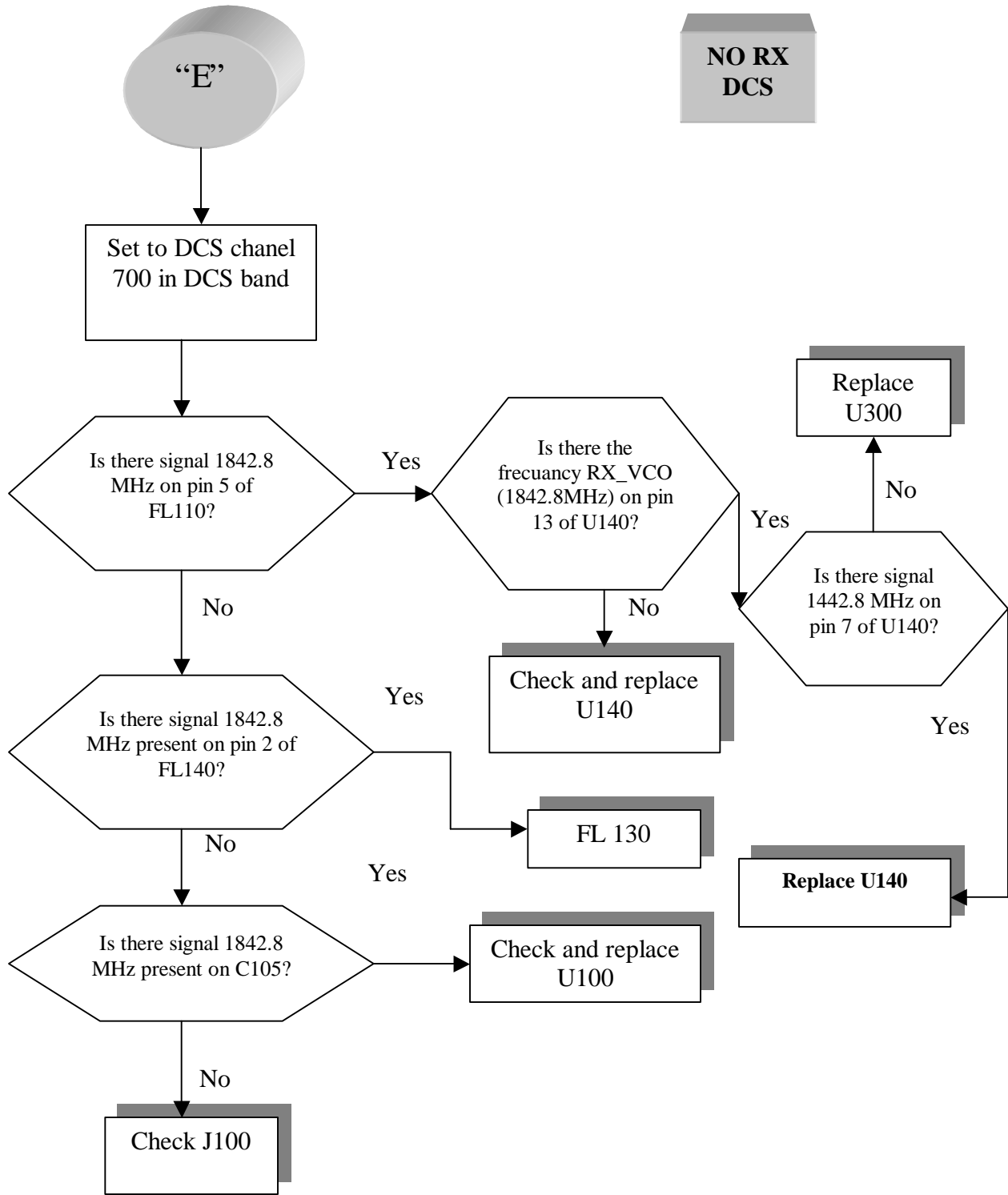


Fig. 3



**NO RX
DCS**



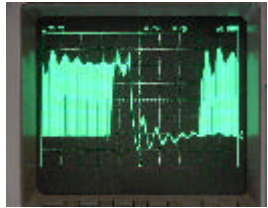
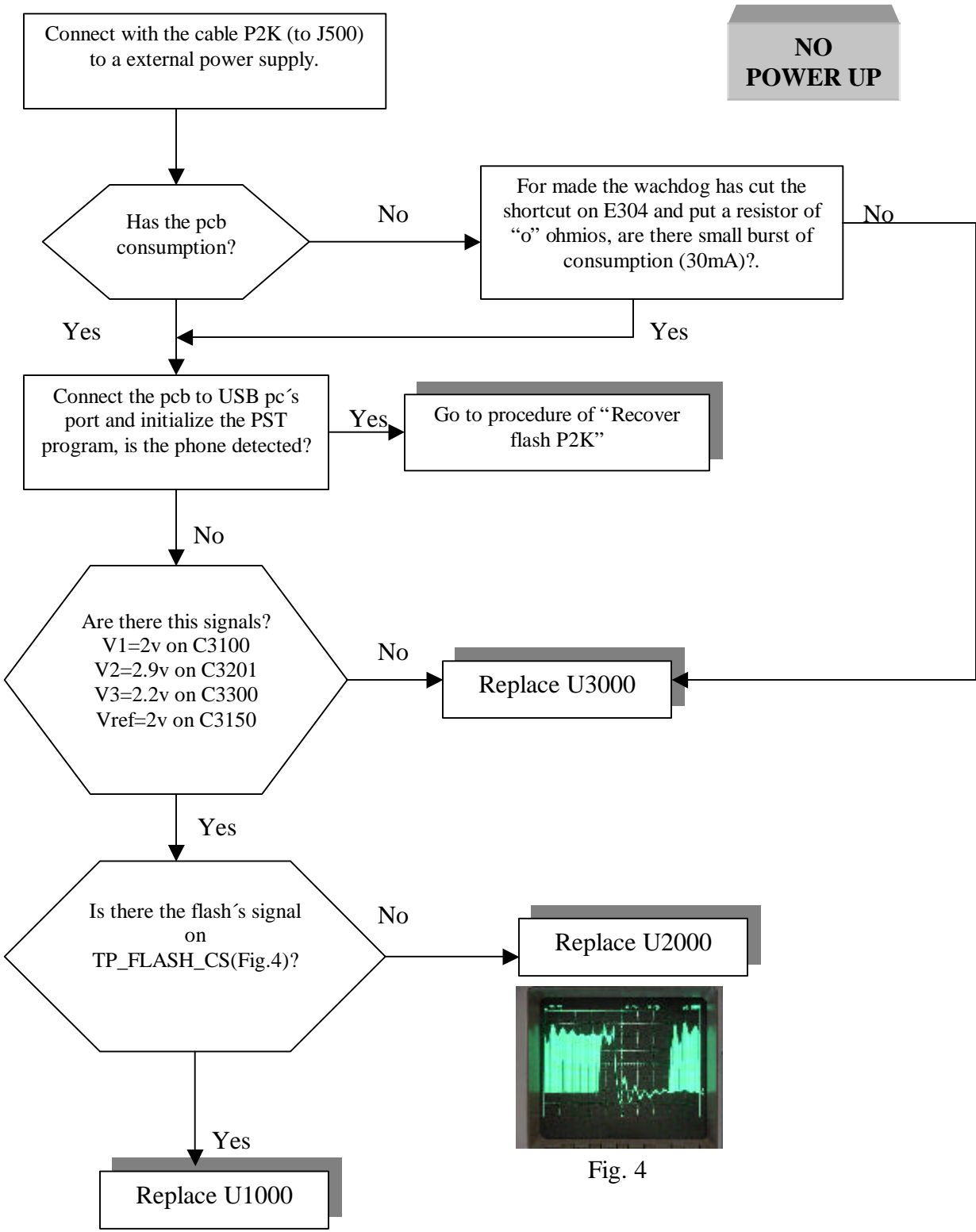
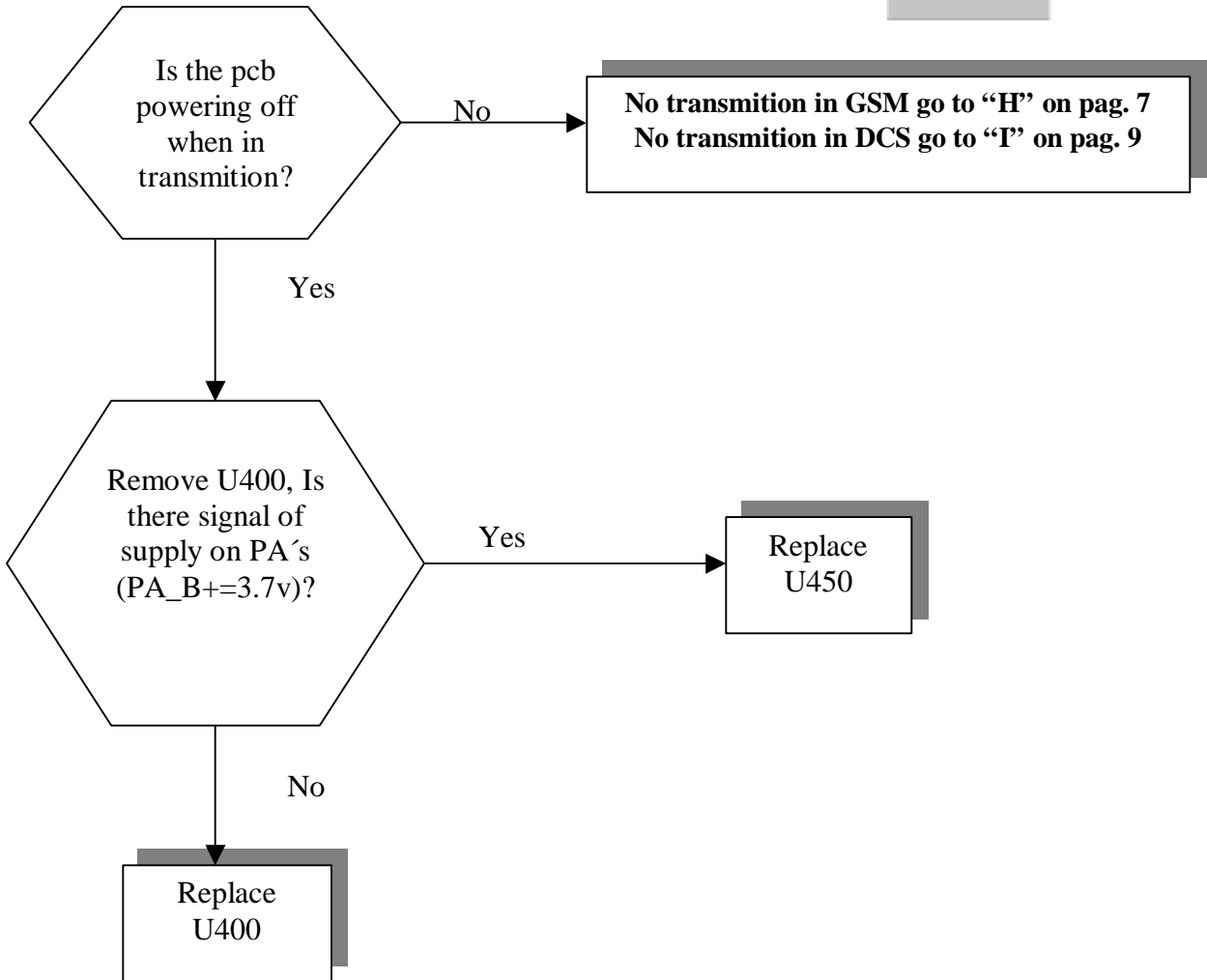
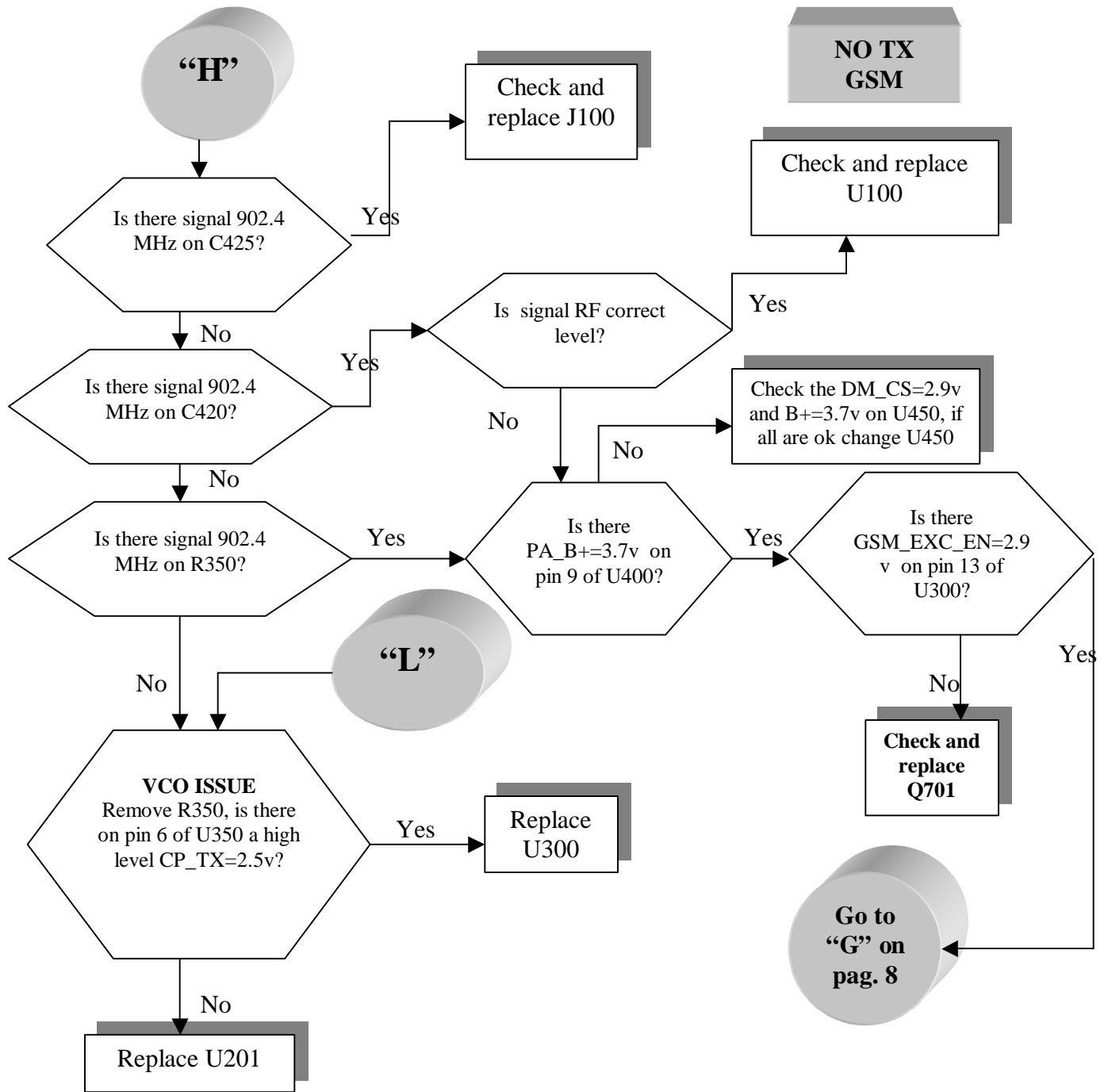
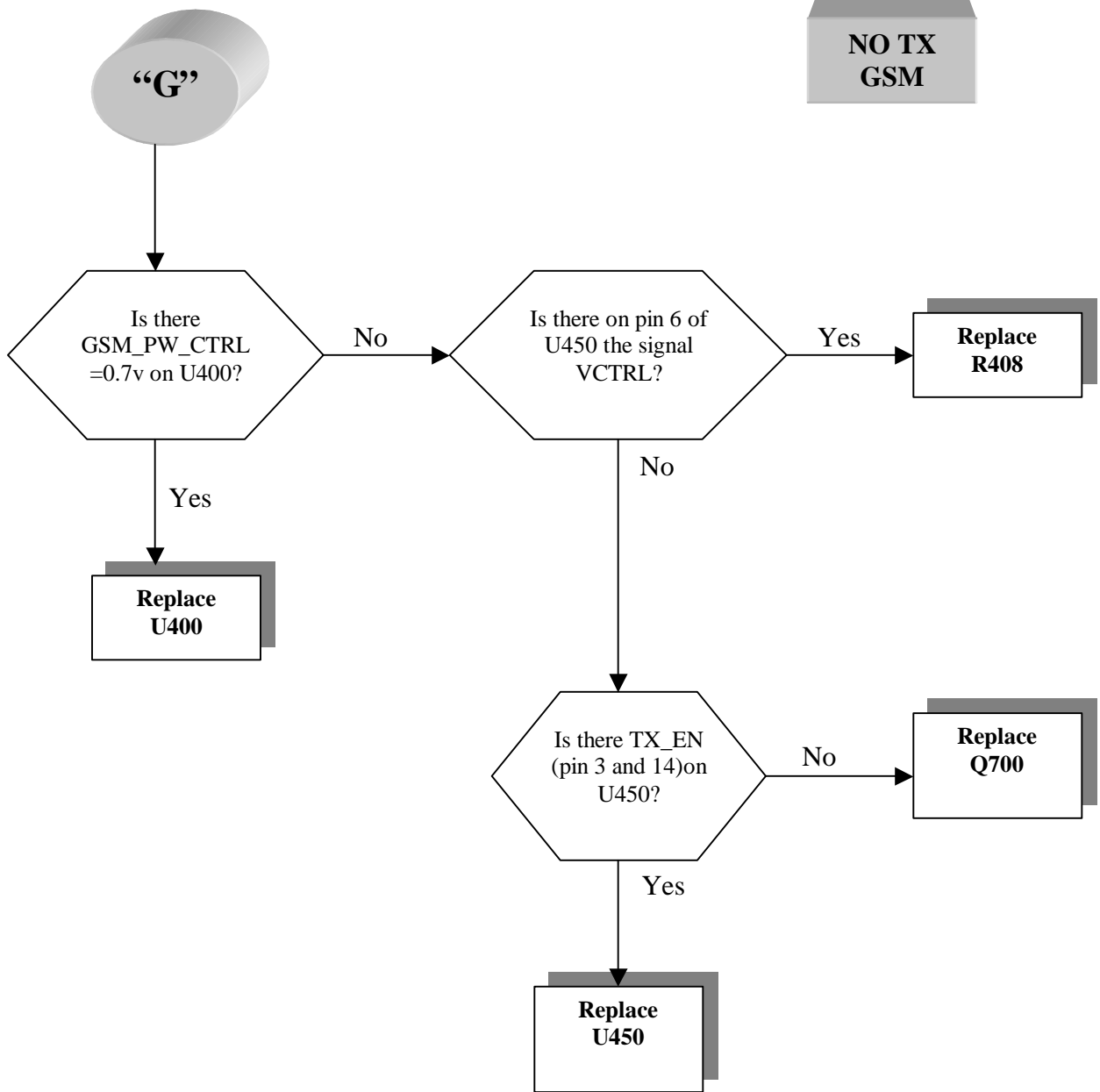


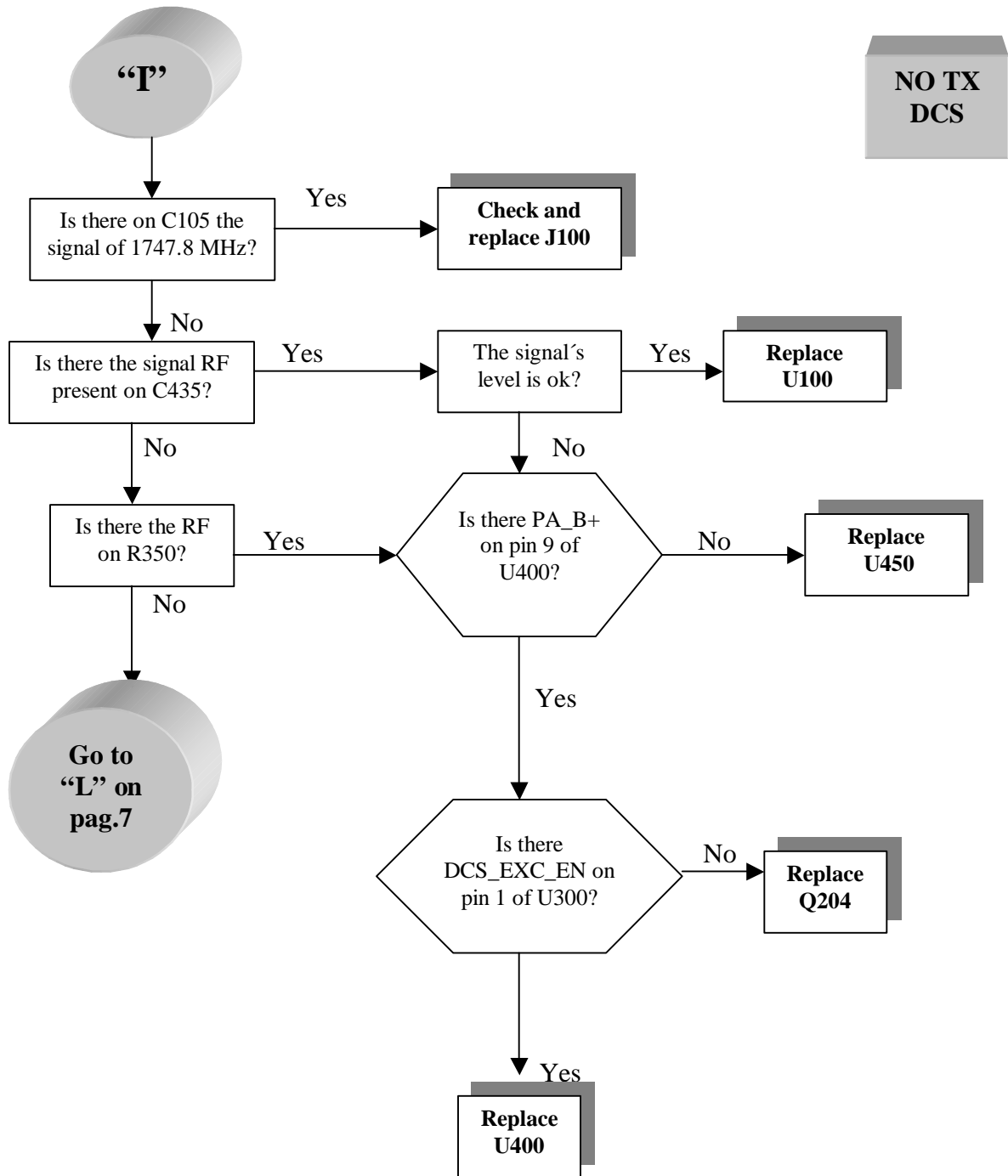
Fig. 4

NO TX











T720i
Debug Guide Level 3
Version 1.1

NOTES



T720i
Debug Guide Level 3
Version 1.1

NOTES



T720i
Debug Guide Level 3
Version 1.1

NOTES



T720i
Debug Guide Level 3
Version 1.1

NOTES