



MOTOROLA

level 3

T 190 / 191

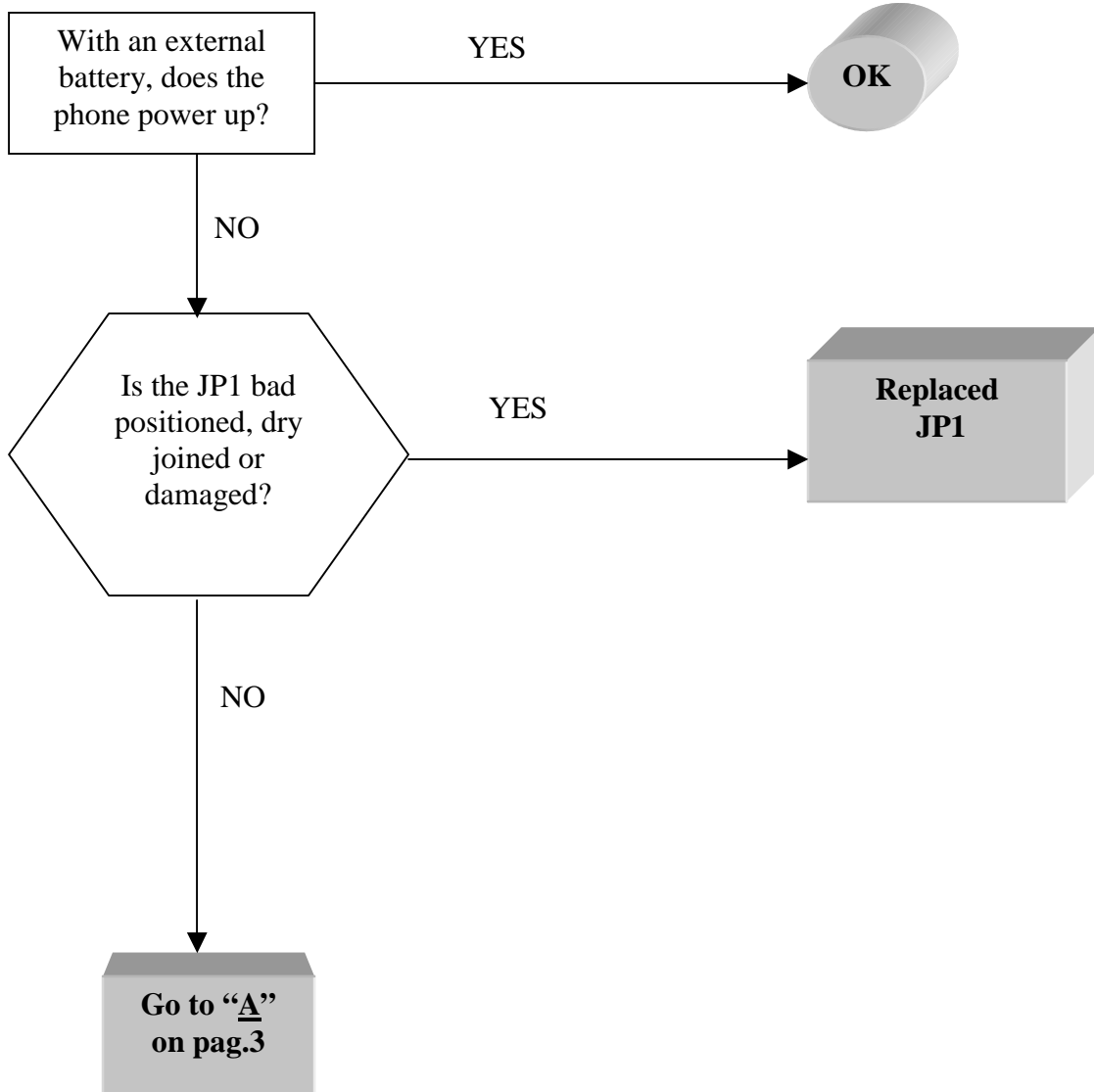
Level 3 Debug Guide
by Toko (toko@gsm-free.org)

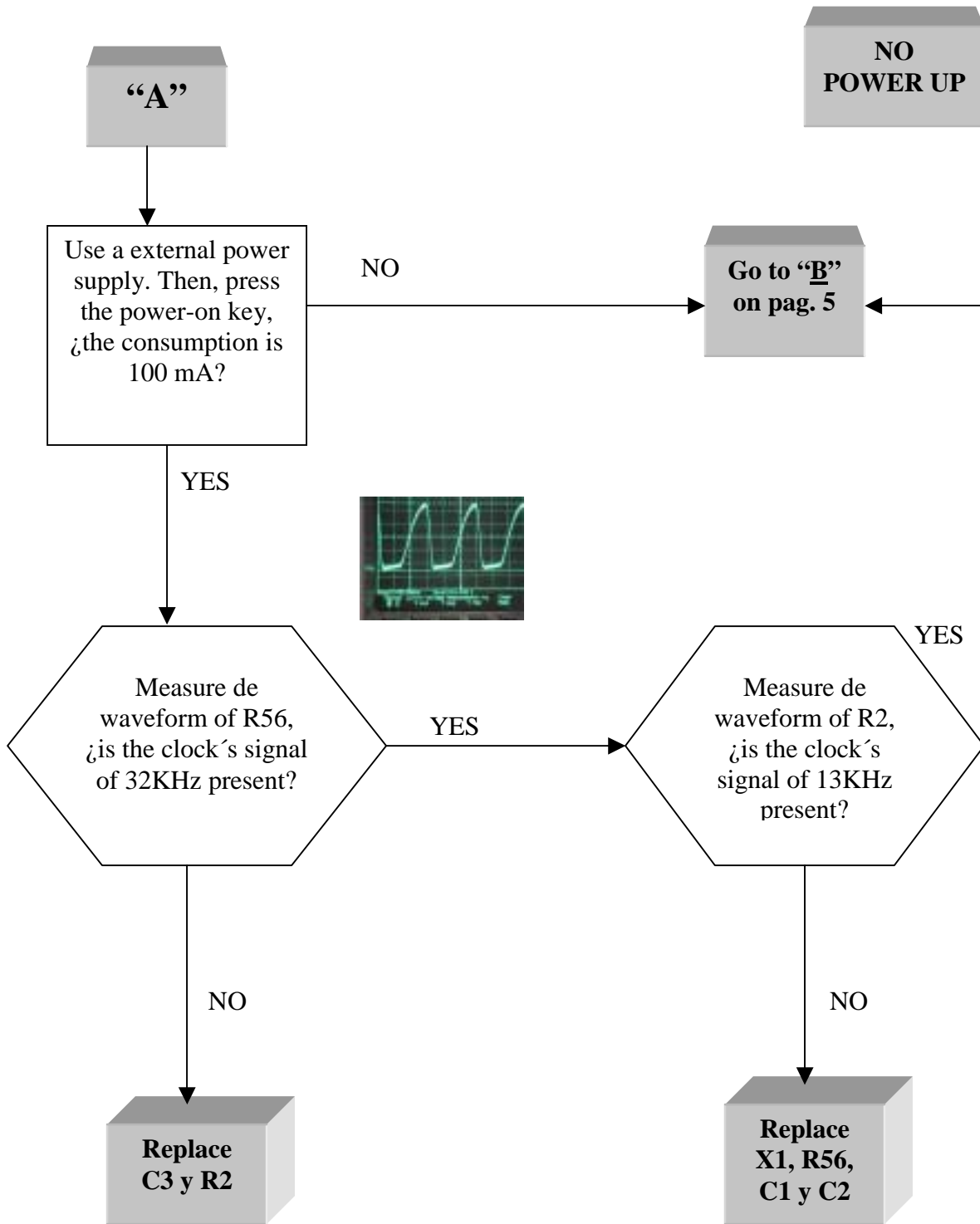
Summary:

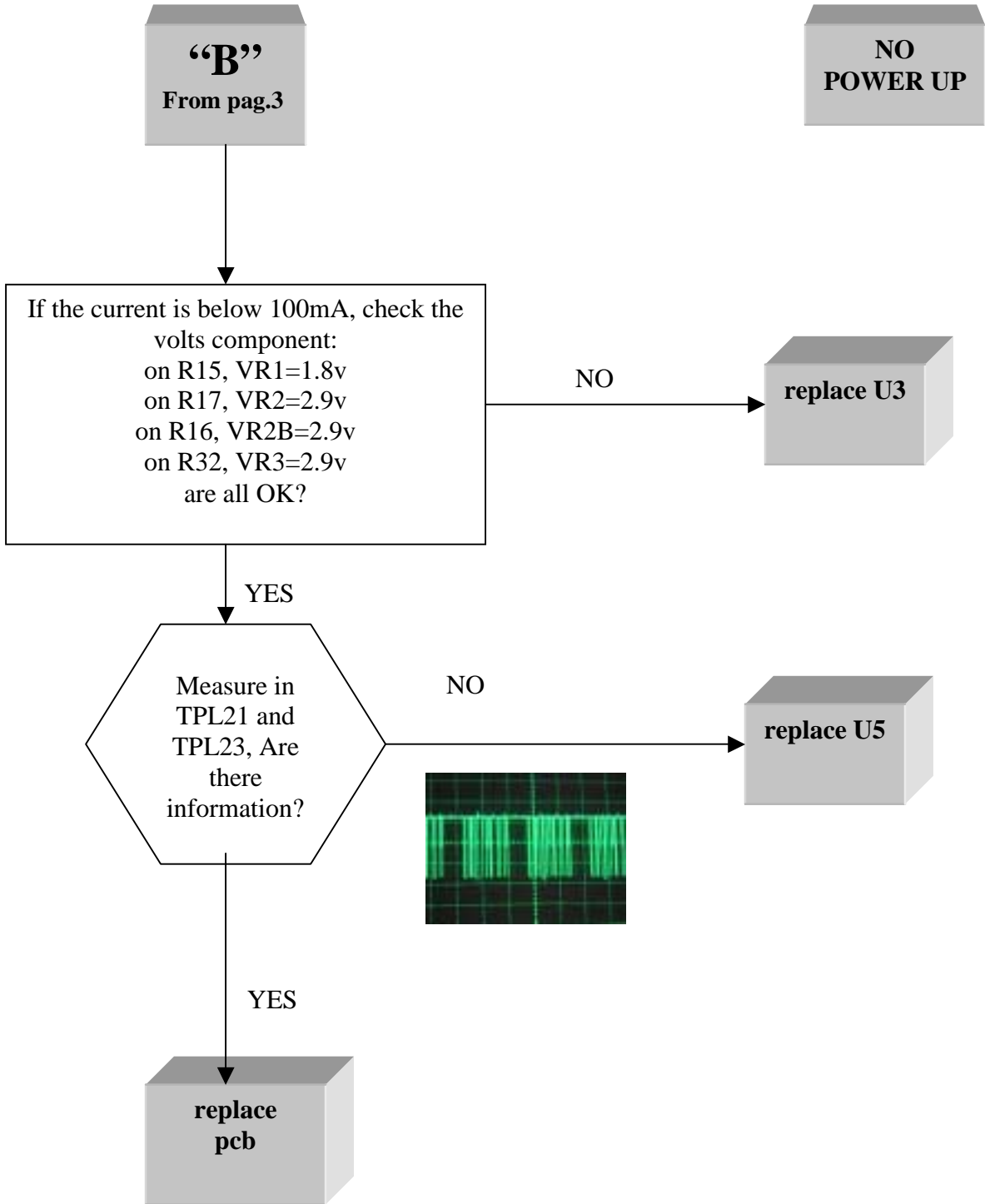
No power up _____	pag. 2, 3, 4, 5 y 6
Display _____	pag. 7, 8 y 9
Display Led _____	pag. 10, 11, 12 y 13
Ringe _____	pag. 14 y 15
Vibrator _____	pag. 16 y 17
Speaker _____	pag. 18 y 19
Microphone _____	pag. 20 y 21
Audio Headset _____	pag. 22, 23 y 24
SIM Card reader _____	pag. 25 y 26
Charging _____	pag. 27,28,29, 30 y 31
Current drain in standby _____	pag 32 y 33
<u>Power off itself and slow charging display indication</u> pag. 34	



**NO
POWER UP**

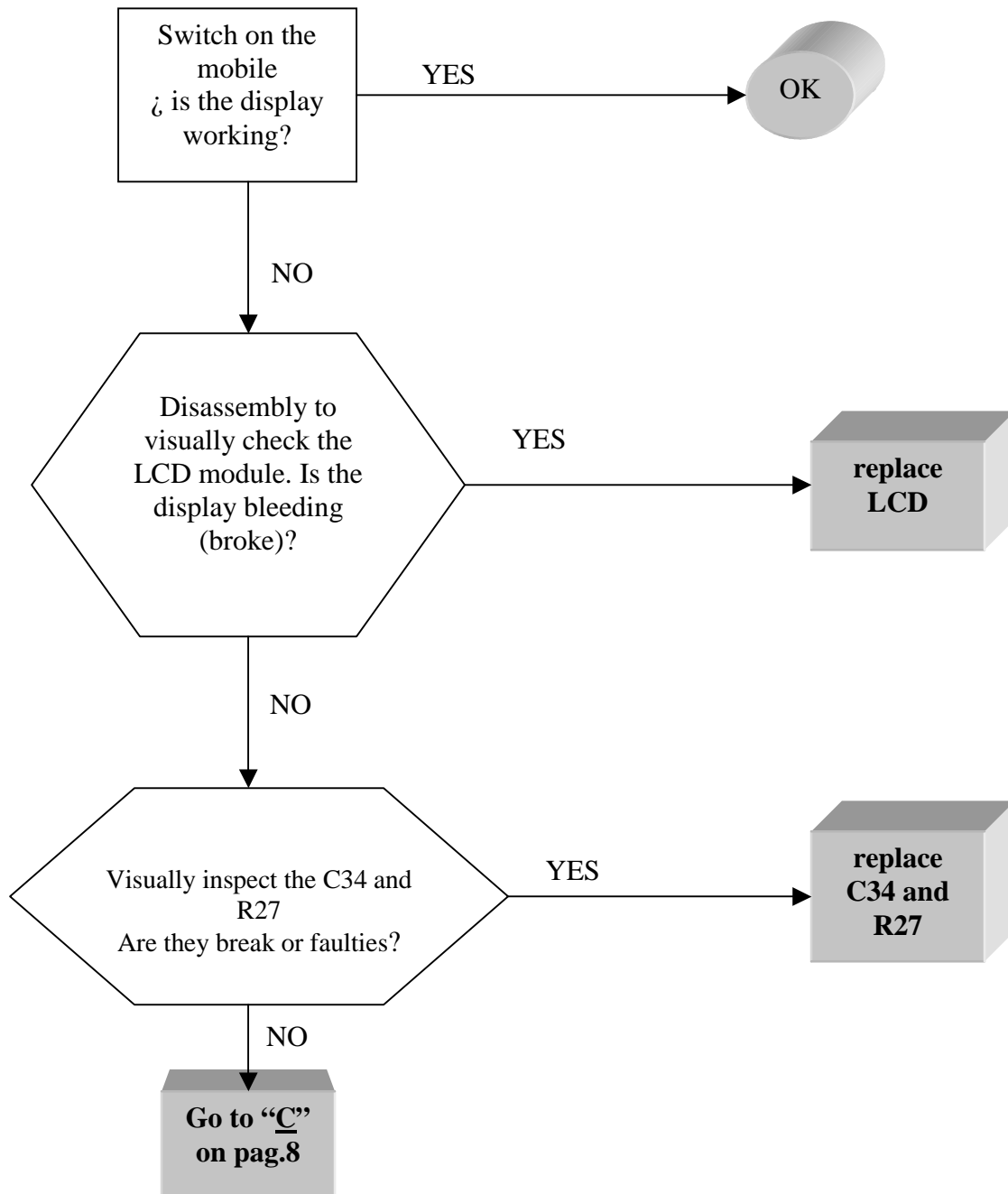


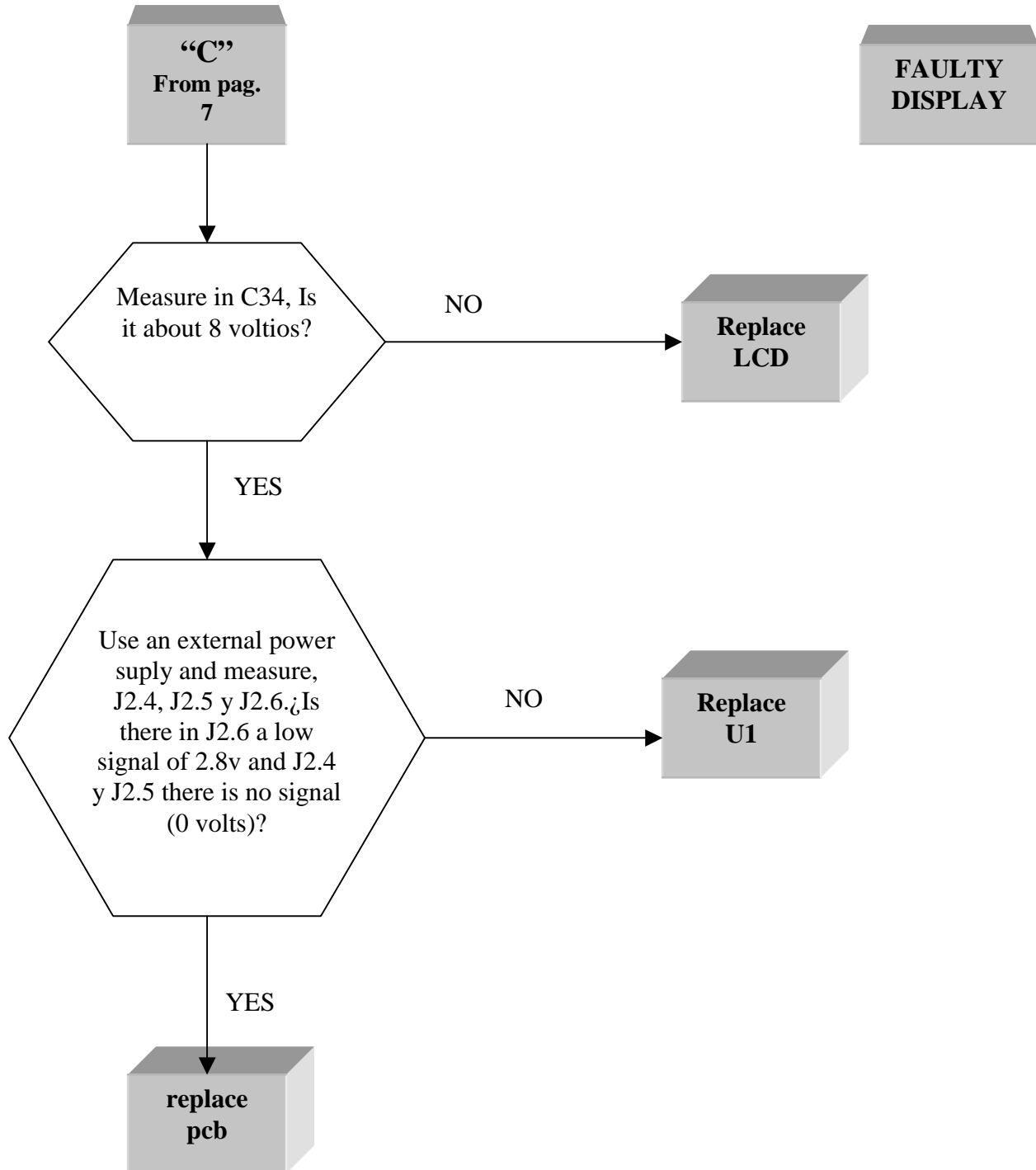






**FAULTY
DISPLAY**





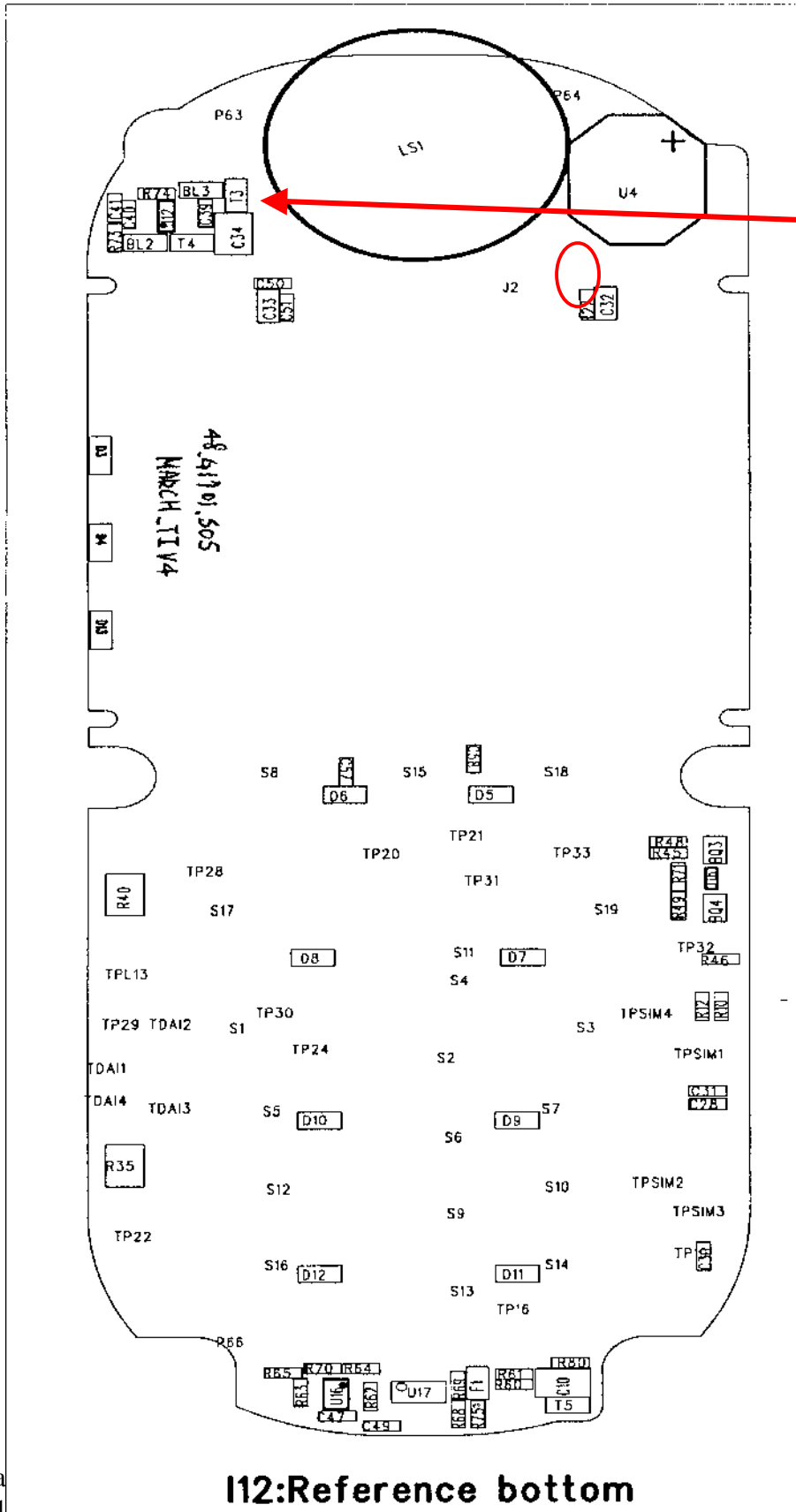


MOTOROLA

level 3

T 190 / 191

FAULTY DISPLAY



8 v

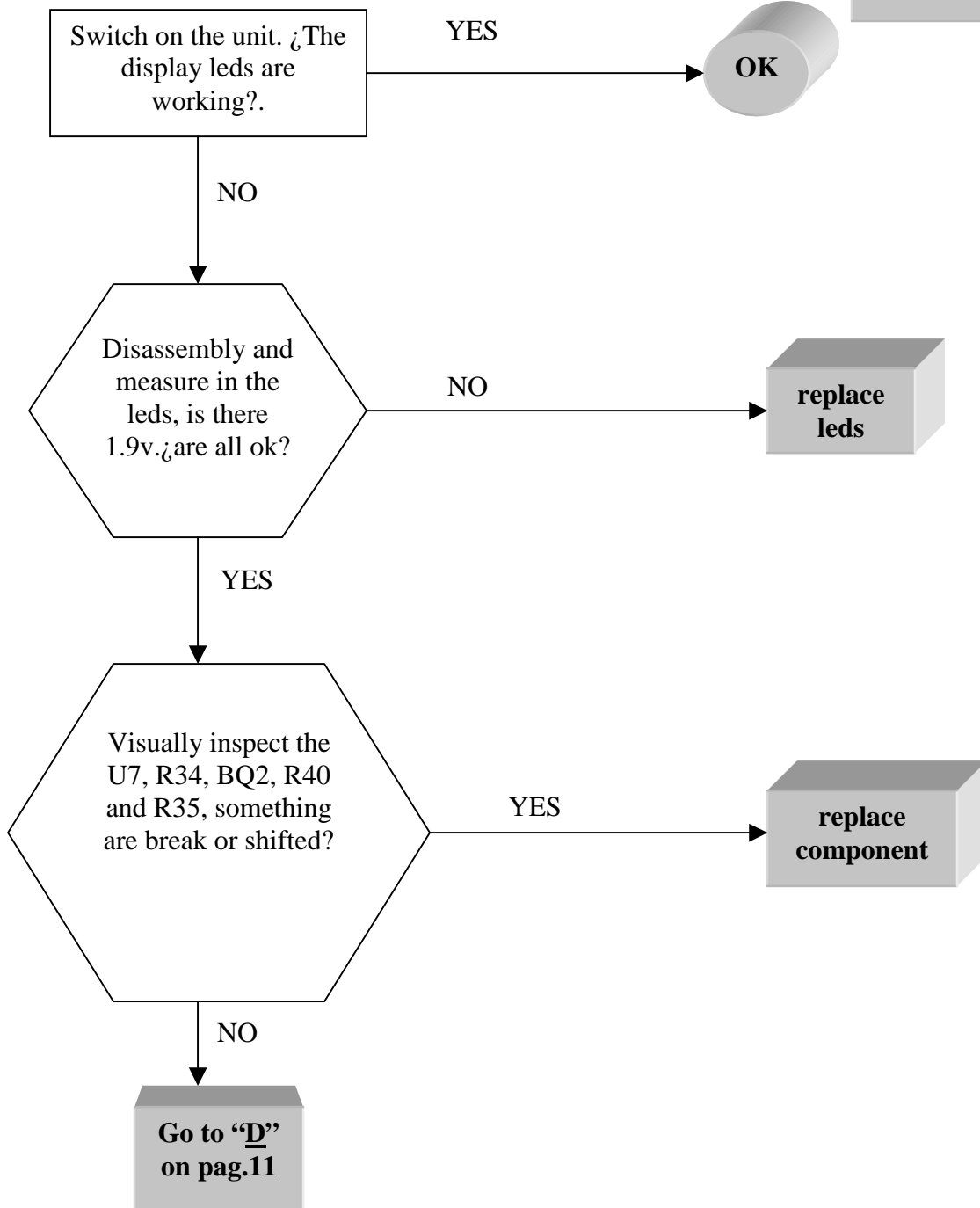


MOTOROLA

level 3

T 190 / 191

**FAULTY
DISPLAY
LED**

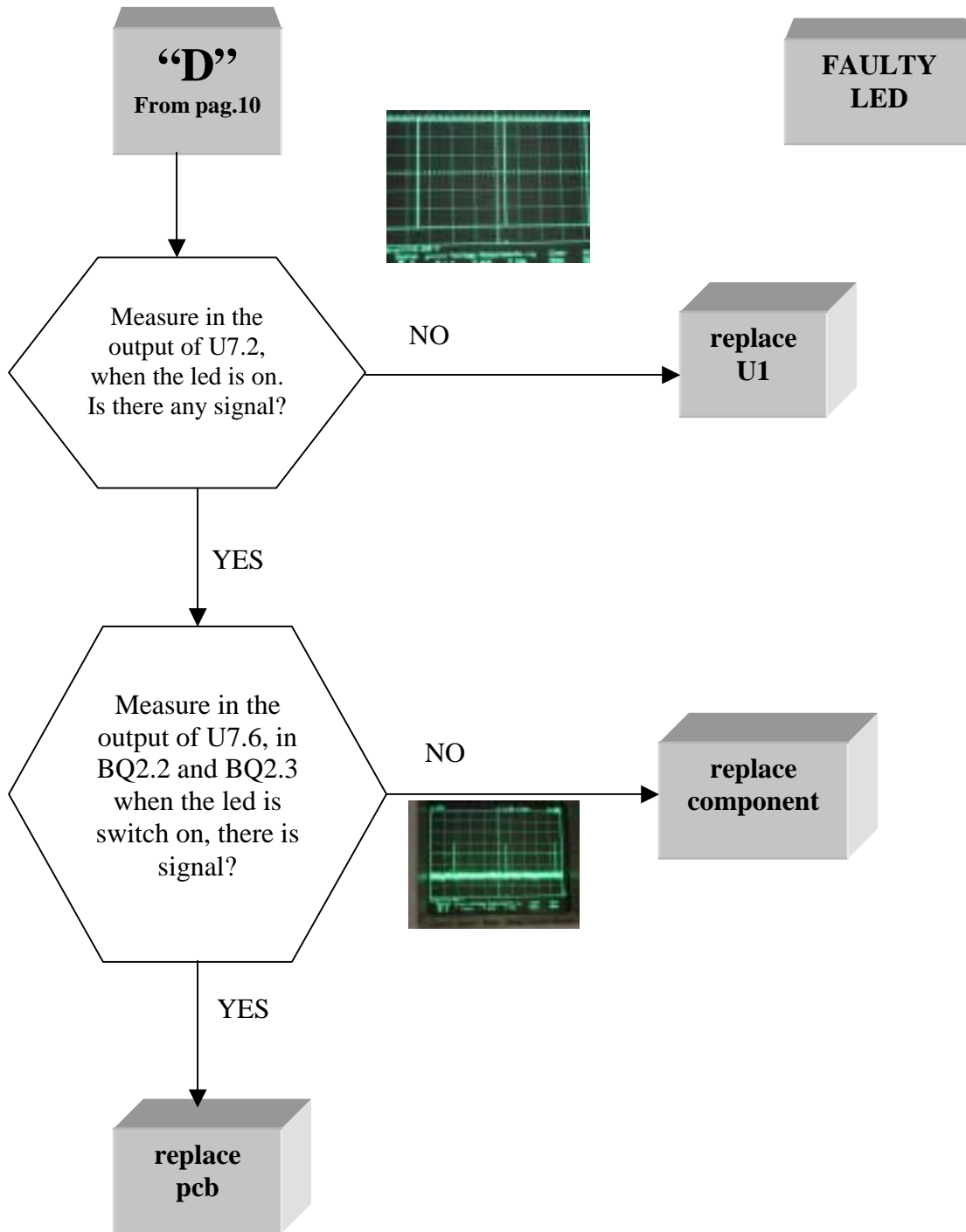




MOTOROLA

level 3

T 190 / 191



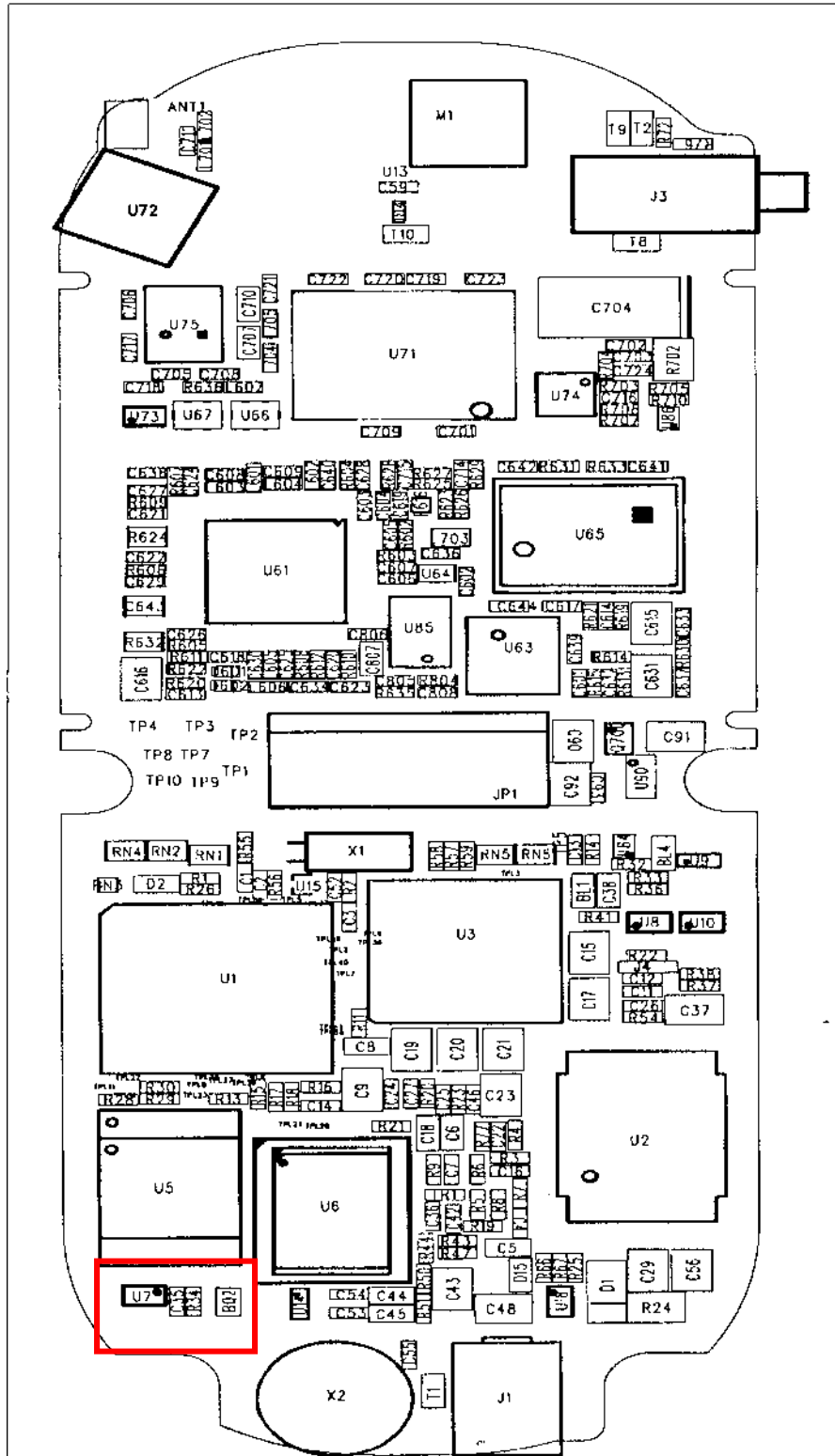


MOTOROLA

level 3

T 190 / 191

FAULTY
DISPLAY
LED



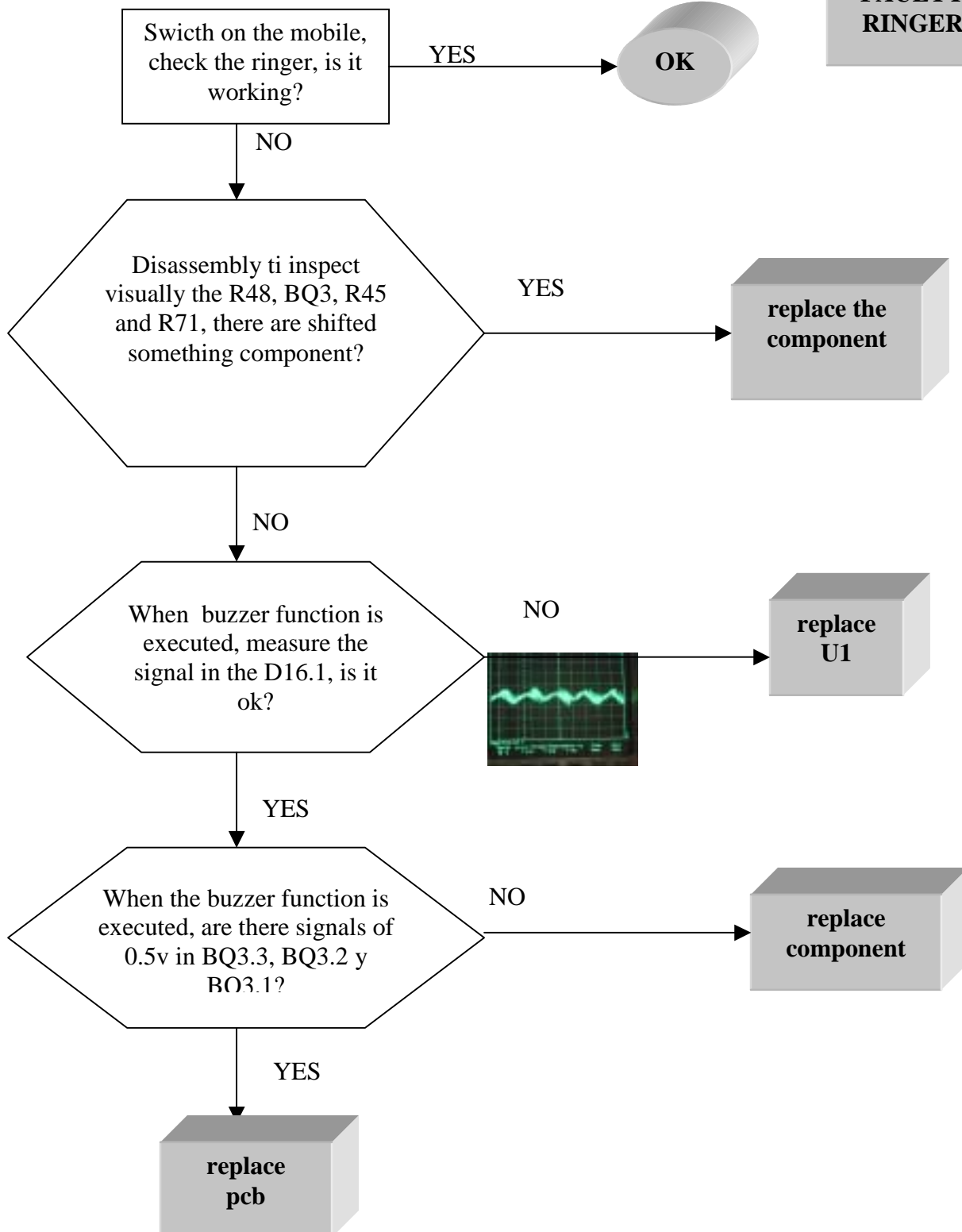


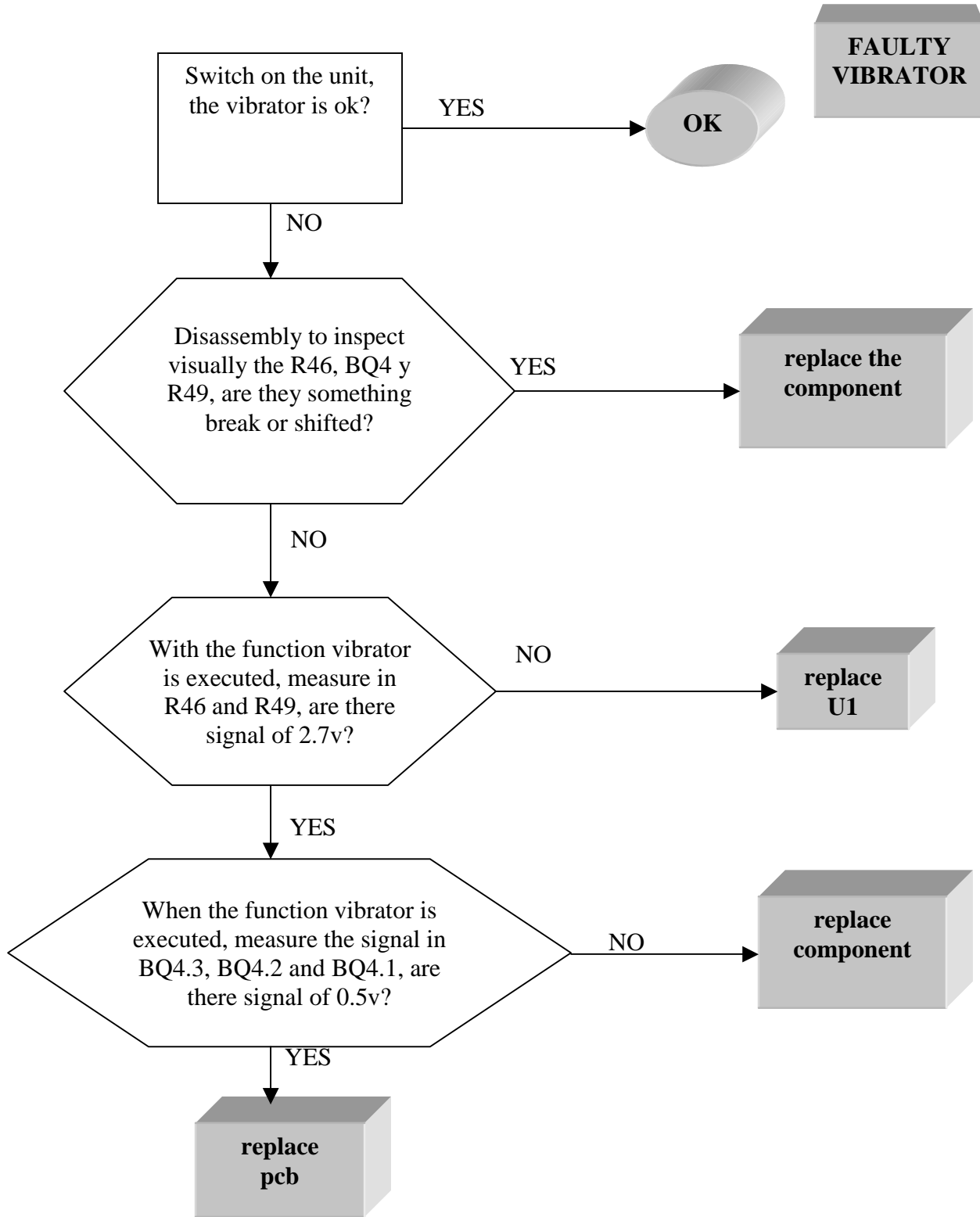
MOTOROLA

level 3

T 190 / 191

**FAULTY
RINGER**





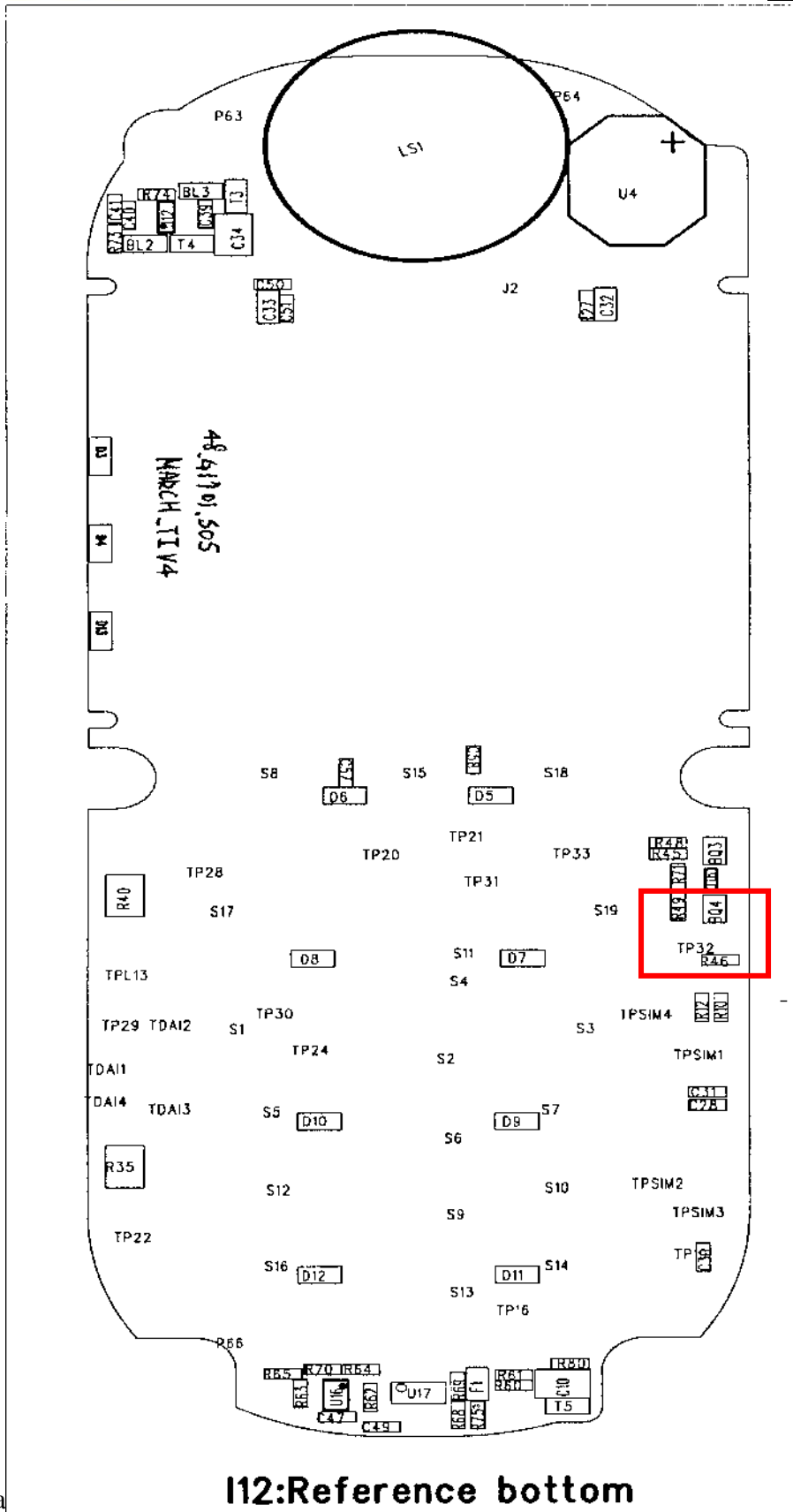


MOTOROLA

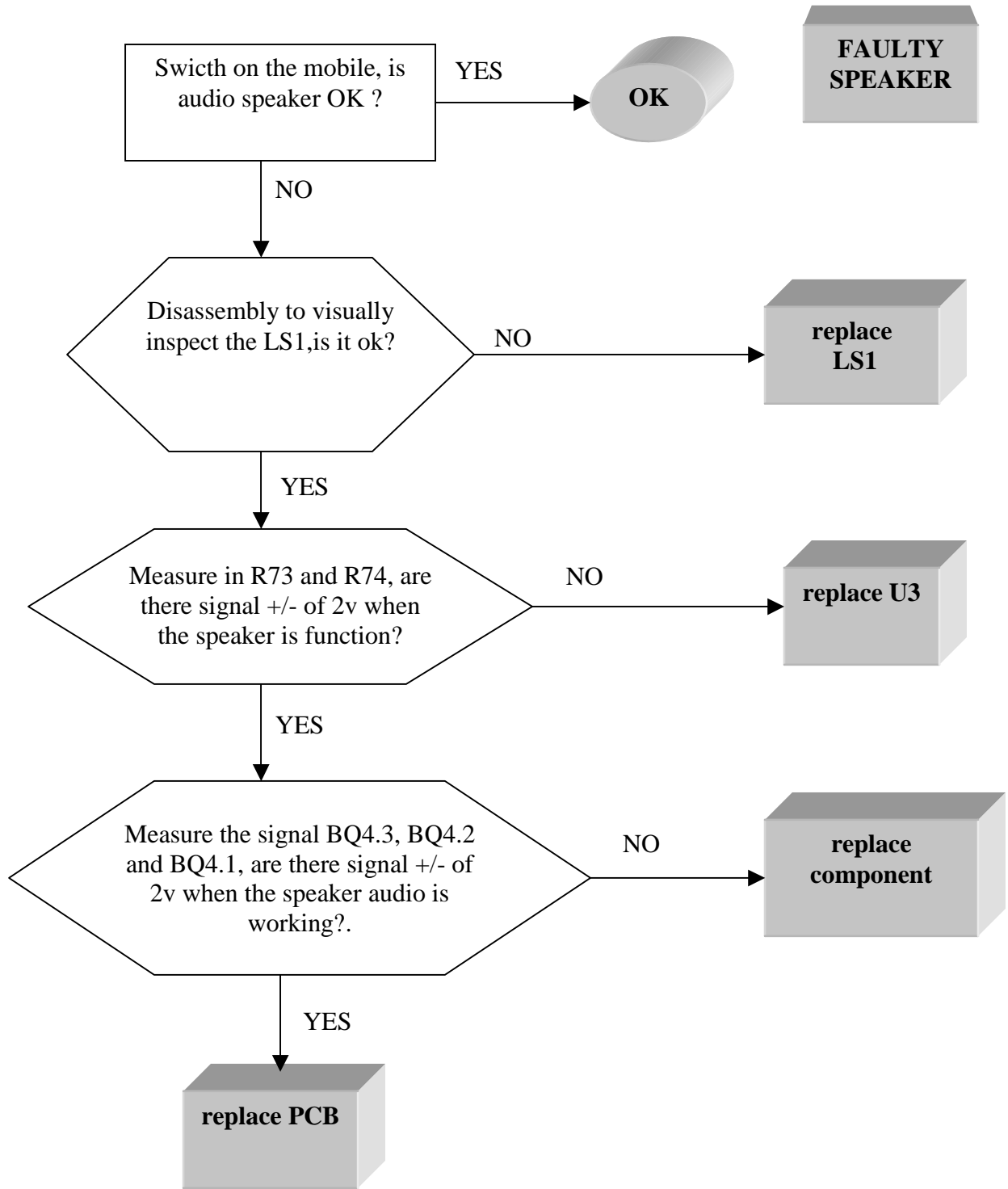
level 3

T 190 / 191

FAULTY
VIBRATOR



I12:Reference bottom



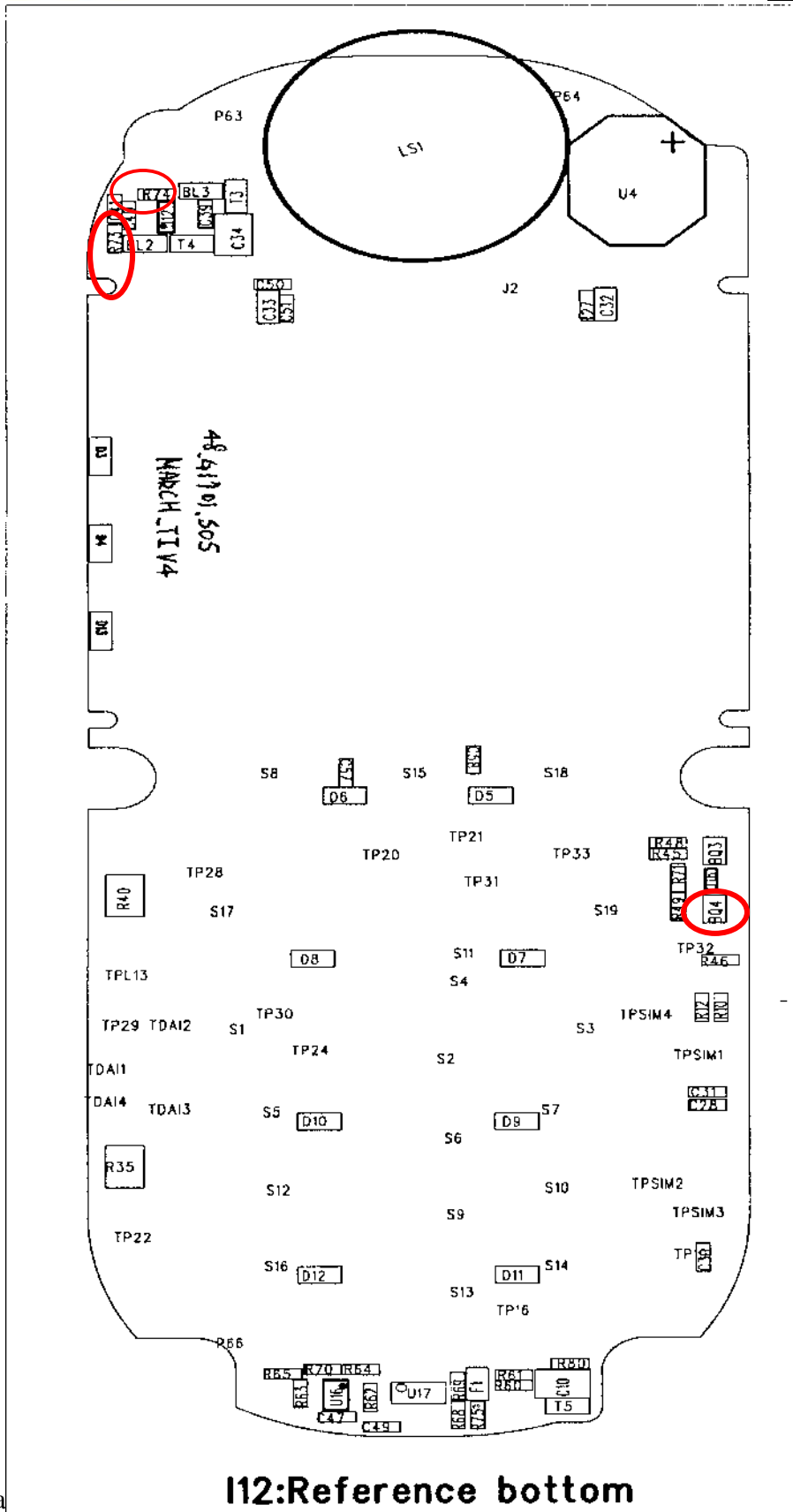


MOTOROLA

level 3

T 190 / 191

SPEAKER
FAULTY



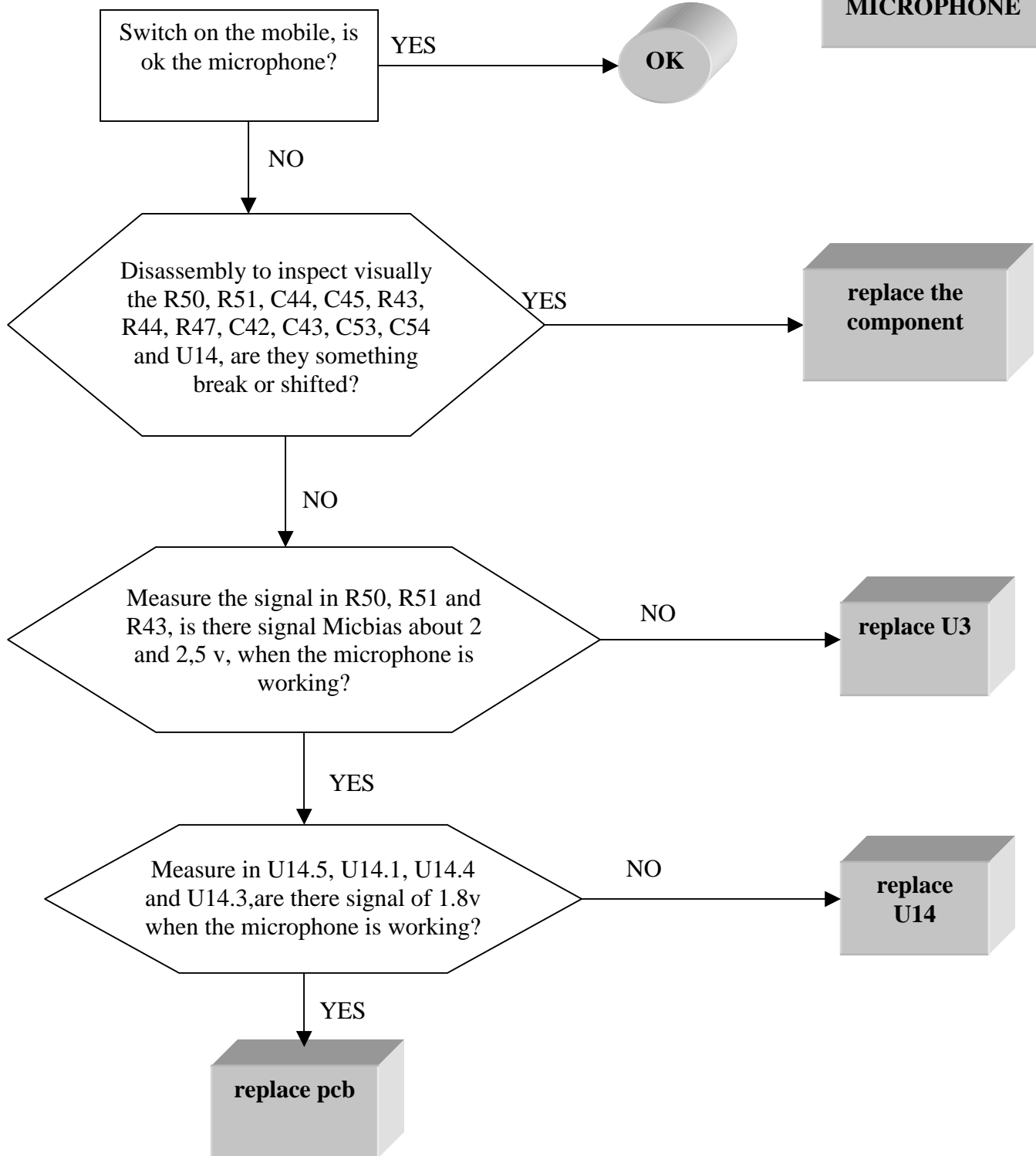


MOTOROLA

level 3

T 190 / 191

**FAULTY
MICROPHONE**



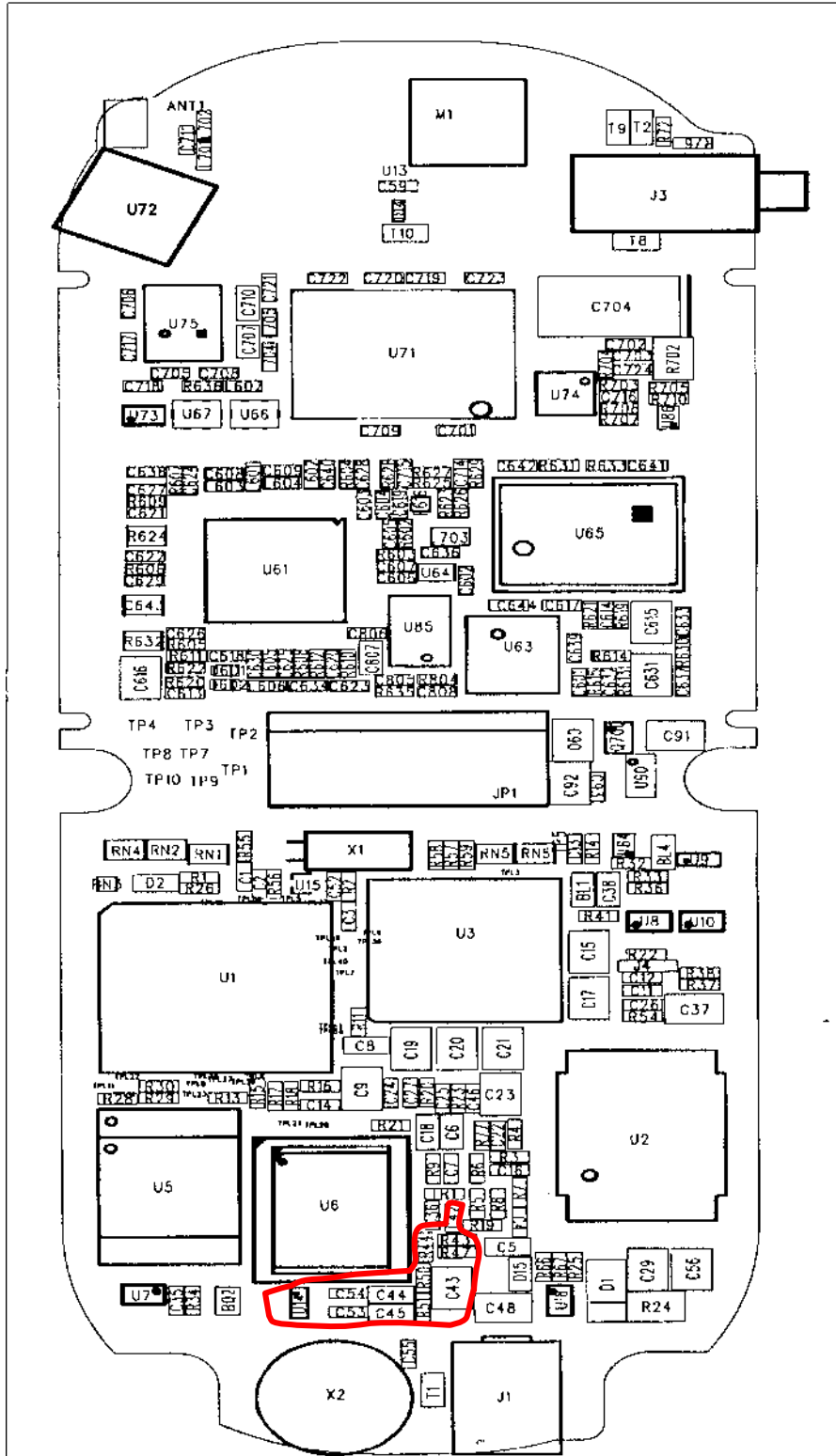


MOTOROLA

level 3

T 190 / 191

FAULTY
MICROPHONE

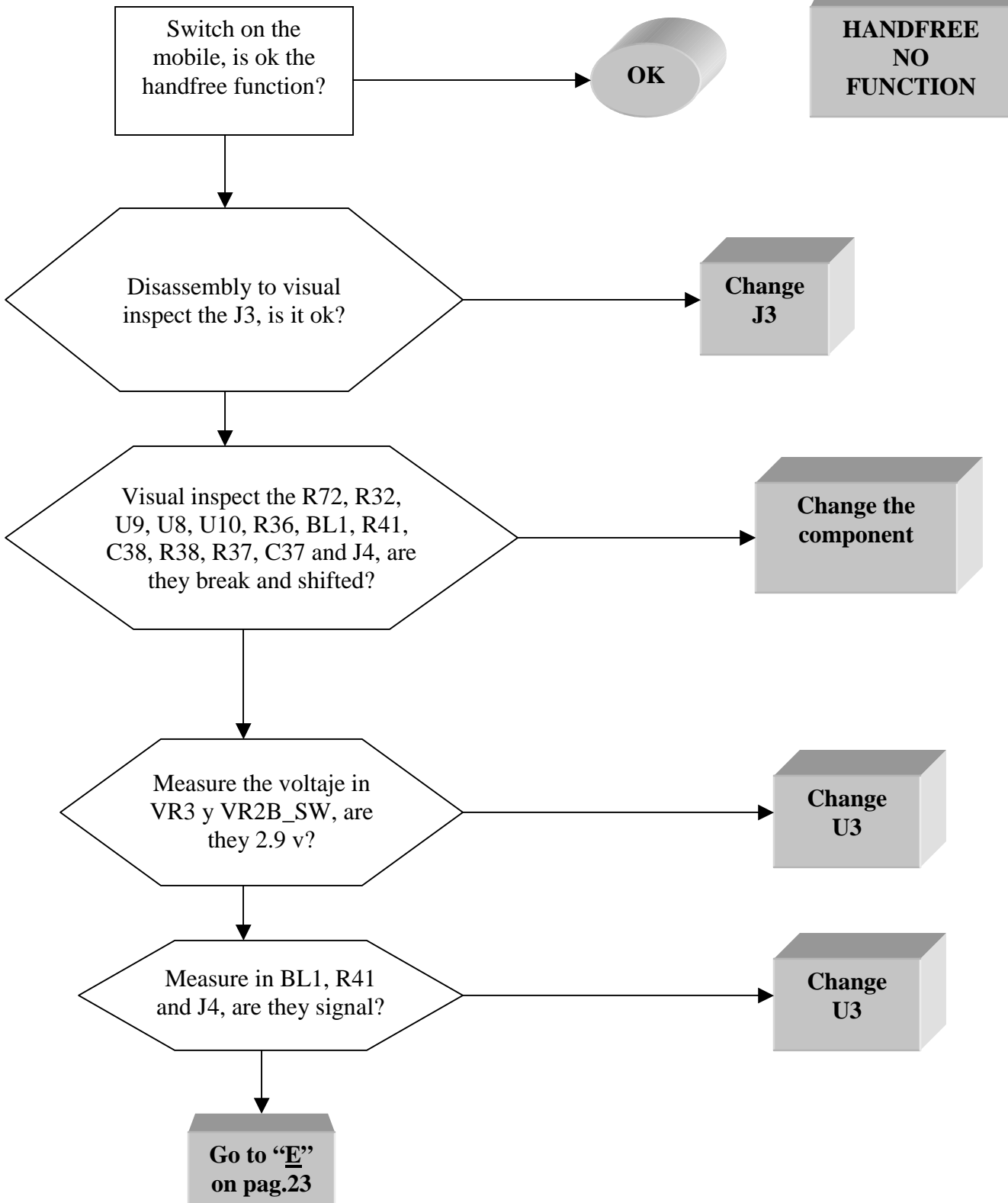


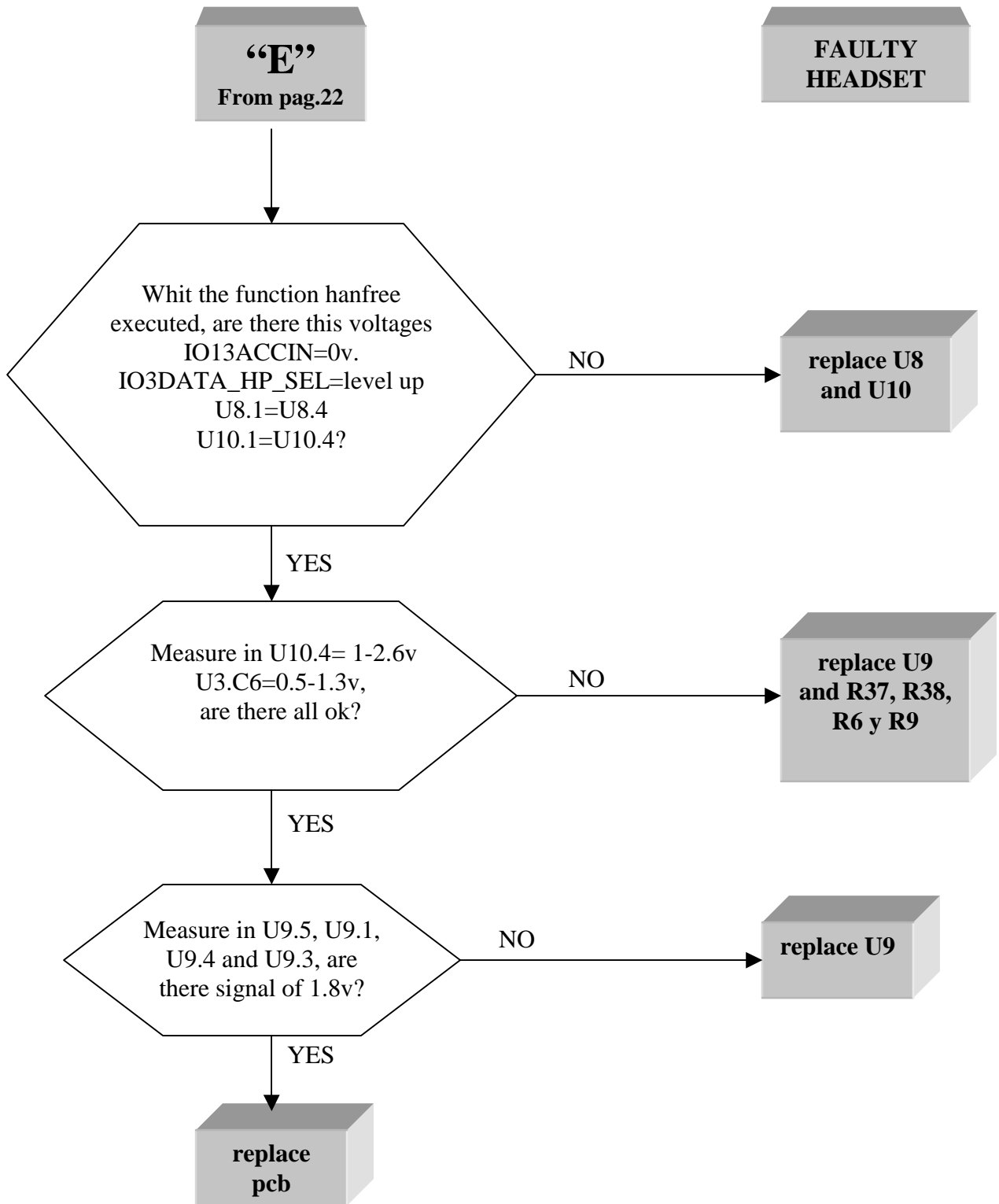


MOTOROLA

level 3

T 190 / 191





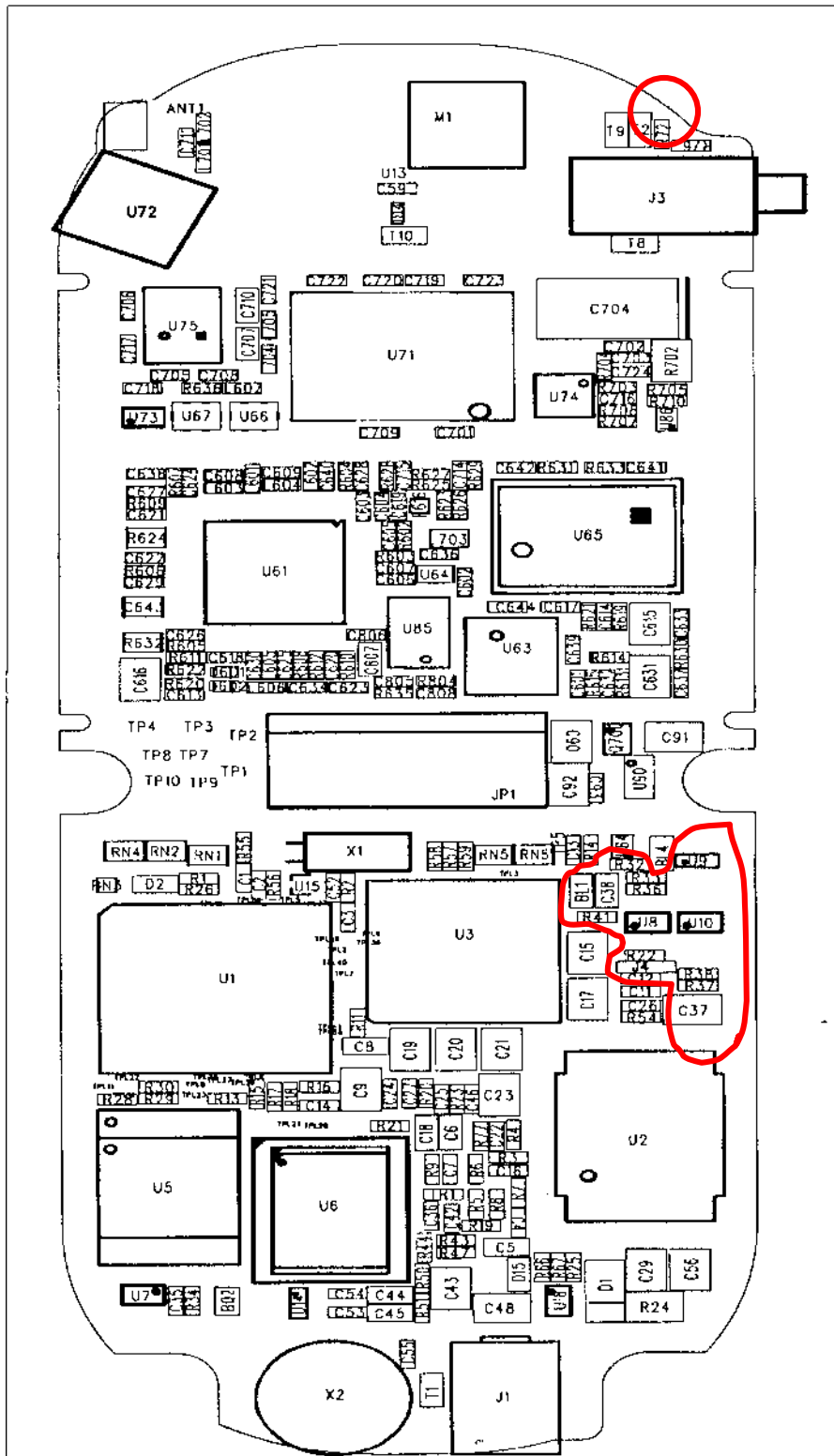


MOTOROLA

level 3

T 190 / 191

FAULTY
HEADSET



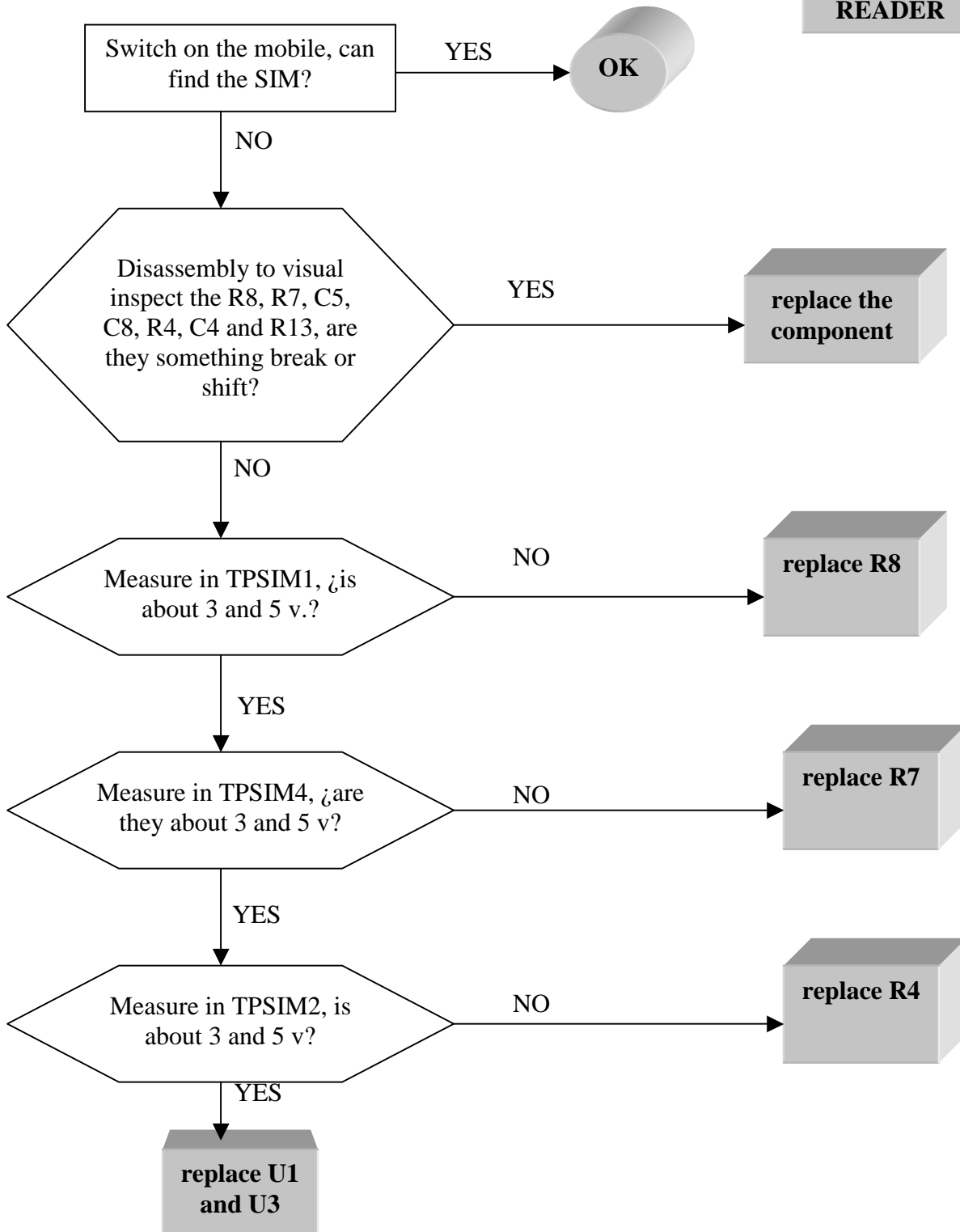


MOTOROLA

level 3

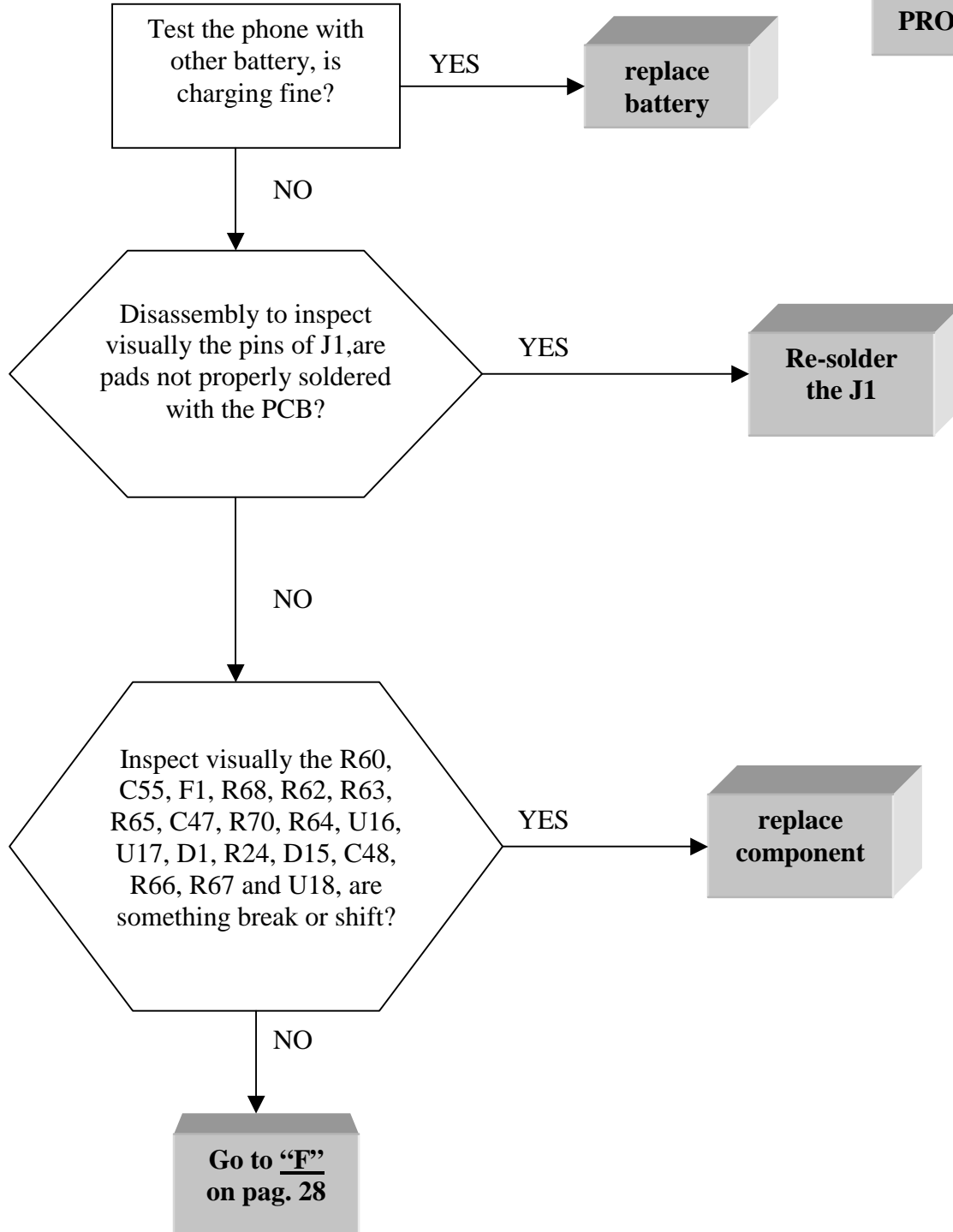
T 190 / 191

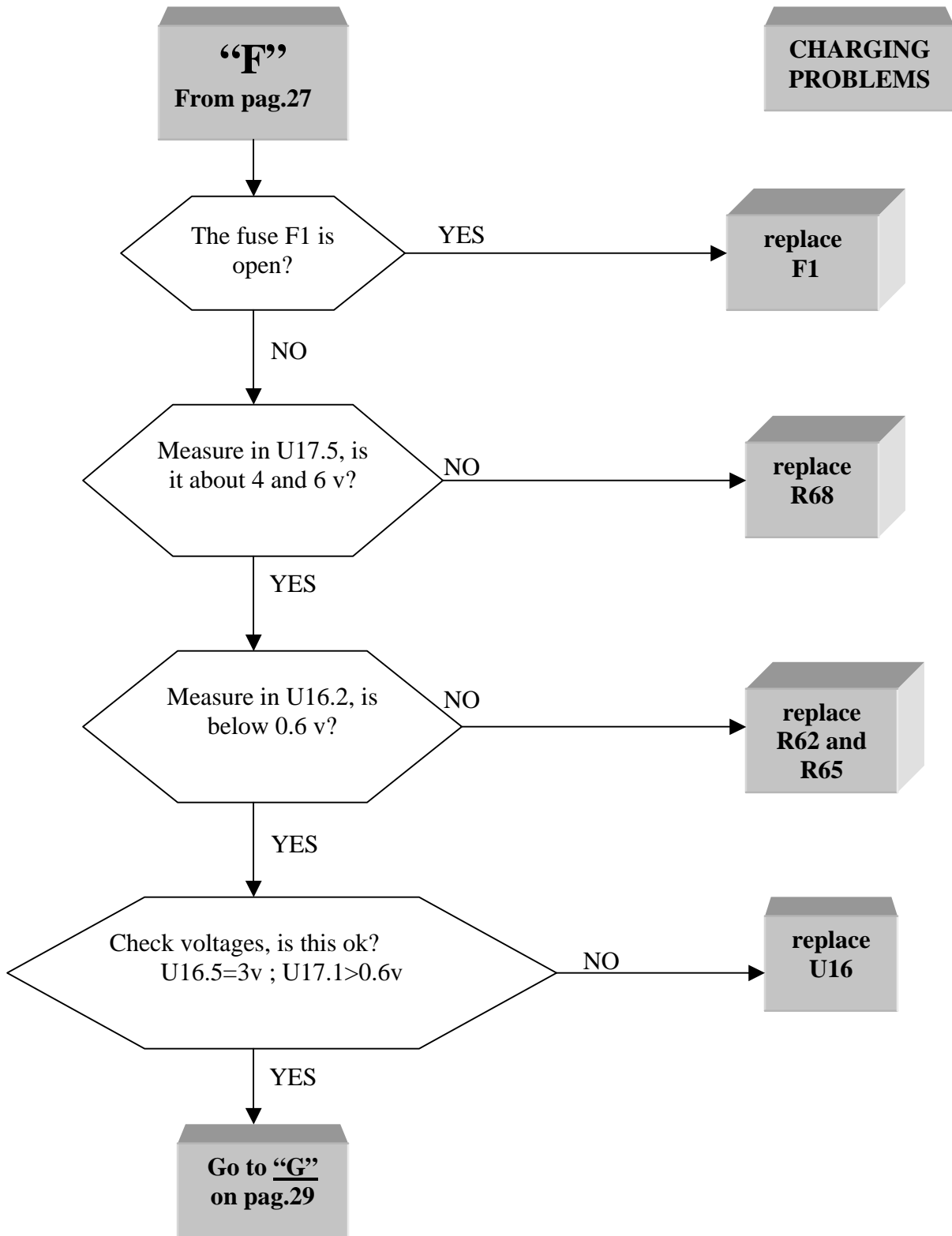
**FAULTY
SIM CARD
READER**

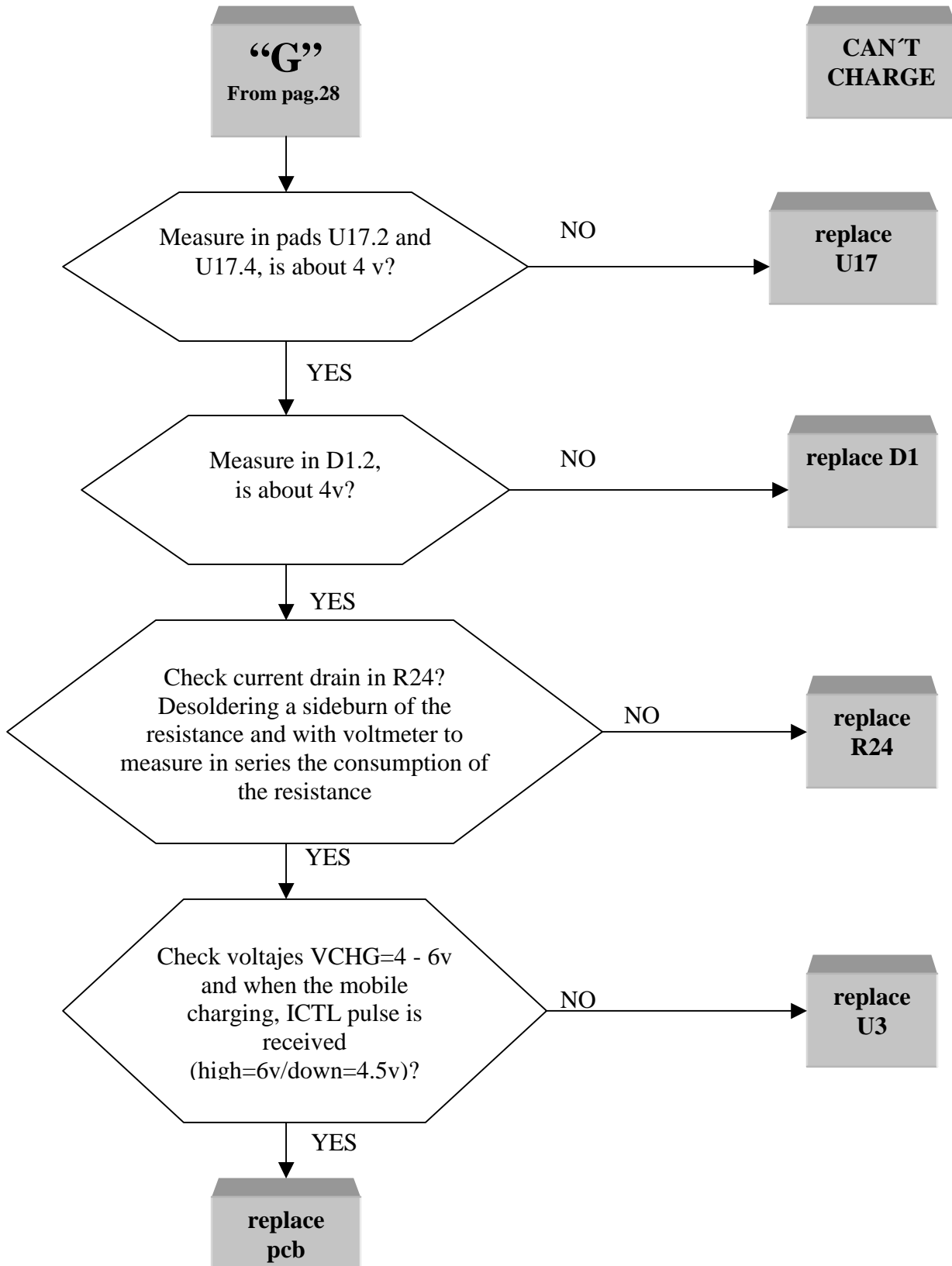


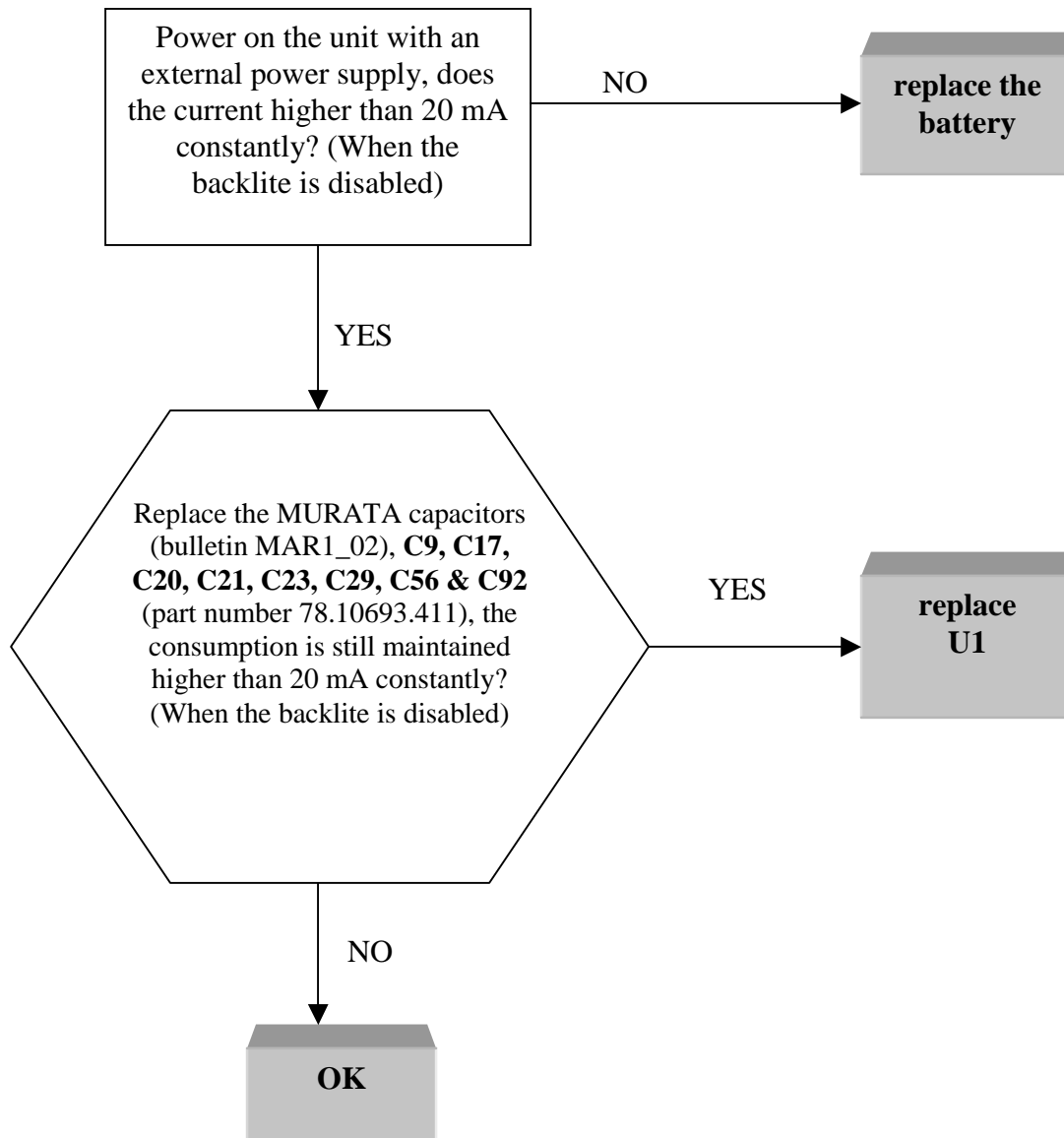
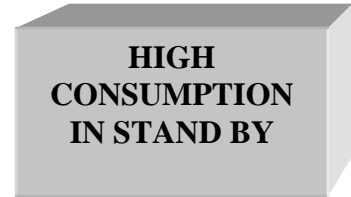


CHARGING PROBLEMS











MOTOROLA

level 3

T 190 / 191

Power off itself and slow charging display indication

