



MOTOROLA

Level 1 and 2 Service Manual

6809503A16-O

L6 i-mode Digital Wireless Telephone



GSM 850/1800/1900 or 900/1800/1900 MHz GPRS

MOTOROLA and the Stylized M Logo are registered in the US Patent & Trademark Office.
All other product or service names are the property of their respective owners.

The Bluetooth trademarks are owned by their proprietor and used by Motorola, Inc. under license.
© Motorola, Inc. 2006.
All rights reserved.

Mobile Devices Business,
Sawgrass International Concourse
789 International Parkway
Room S2C
Sunrise, FL 33325-6220

Contents

Introduction	4
Product Identification	4
Product Names	4
Regulatory Agency Compliance	4
Computer Program Copyrights	5
About this Service Manual	5
Warranty Service Policy	6
Parts Replacement	7
Specifications	8
Product Overview	10
Features	10
General Operation	12
Controls, Indicators, and Input/Output (I/O) Connectors	12
Alert Settings	13
Battery Function	13
Operation	14
Tools and Test Equipment	15
Disassembly	16
Removing and Replacing the Battery Cover	16
Removing and Replacing the Battery	17
Removing and Replacing the SIM	18
Removing and Replacing the Antenna	19
Removing and Replacing the Transceiver PC Board Shield	21
Removing and Replacing the Motor/Vibrator	22
Removing and Replacing the Transceiver PC Board	23
Removing and Replacing the Flex Assembly	26
Removing and Replacing the Camera Assembly	31
Removing and Replacing the Front Housing	32
Removing and Replacing the Keypad PC Board	34
Removing and Replacing the Keypad	35
Removing and Replacing the Display Module	36
Subscriber Identity Module (SIM) and Identification Label	38
SIM	38
Identification	38
Telephone Identification	40
Identification Label	40
Troubleshooting	41
Troubleshooting Chart	41
Exploded View Diagram	43
Exploded View Parts List	44
Accessories	45
Programming: Software Upgrade and Flexing	46
Index	Index-1

Introduction

Motorola® Inc. maintains a worldwide organization that is dedicated to provide responsive, full-service customer support. Motorola products are serviced by an international network of company-operated product-care centers as well as authorized independent service firms.

Available on a contract basis, Motorola Inc. offers comprehensive maintenance and installation programs that enable customers to meet requirements for reliable, continuous communications.

To learn more about the wide range of Motorola service programs, contact your local Motorola products representative or the nearest Customer Service Manager.

Product Identification

Motorola products are identified by the model number on the housing. Use the entire model number when inquiring about the product. Numbers are also assigned to kits. Use these numbers when requesting information or ordering replacement parts.

Product Names

Product names are listed on the front cover. Product names are subject to change without notice. Some product names, as well as some frequency bands, are available only in certain markets.

Regulatory Agency Compliance

This device complies with Part 15 of the FCC Rules. Operation is subject to the following conditions:

- This device may not cause any harmful interference, and
- must accept interference received, including interference that may cause undesired operation.

This class B device also complies with all requirements of the Canadian Interference-Causing Equipment Regulations (ICES-003).

Cet appareil numérique de la classe B respecte toutes les exigences du Règlement sur le matériel brouilleur du Canada.

Computer Program Copyrights

The Motorola products described in this manual may include Motorola computer programs stored in semiconductor memories or other media that are copyrighted with all rights reserved worldwide to Motorola. Laws in the United States and other countries preserve for Motorola, Inc. certain exclusive rights to the copyrighted computer programs, including the exclusive right to copy, reproduce, modify, decompile, disassemble, and reverse-engineer the Motorola computer programs in any manner or form without Motorola's prior written consent. Furthermore, the purchase of Motorola products shall not be deemed to grant either directly or by implication, estoppel, or otherwise, any license or rights under the copyrights, patents, or patent applications of Motorola, except for a nonexclusive license to use the Motorola product and the Motorola computer programs with the Motorola product.

About this Service Manual

Using this service manual and the suggestions contained in it assures proper installation, operation, and maintenance of wireless telephones. Refer questions about this manual to the nearest Customer Service Manager.

Audience

This manual aids service personnel in testing and repairing of wireless telephones. Service personnel should be familiar with electronic assembly, testing, and troubleshooting methods, and with the operation and use of associated test equipment.

Use of this manual assures proper installation, operation, and maintenance of Motorola products and equipment. It contains all service information required for the equipment described and is current as of the printing date.

Scope

The scope of this manual is to provide basic information relating to wireless telephones, and provide procedures and processes for repairing the phones at Level 1 and 2 service centers including:

- Unit swap out
- Repairing of mechanical faults
- Basic modular troubleshooting
- Testing and verification of phone functionality
- Initiate warranty claims and send faulty modules to Level 3 or 4 repair centers

Conventions

Special characters and typefaces, listed and described below, are used in this manual to emphasize certain types of information.



Note: Emphasizes additional information pertinent to the subject matter.

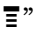


Caution: Emphasizes information about actions that may result in equipment damage.



Warning: Emphasizes information about actions that may result in personal injury.



Keys to be pressed are represented graphically. For example, instead of “Press the Menu Key”, you will see “Press ”.

Information from a screen is shown in text as similar as possible to what appears in the display. For example, **ALERTS** or **ALERTS**.

Information that you need to type is printed in **boldface type**.

Warranty Service Policy

This product is sold with the standard 12-month warranty terms and conditions. Accidental damage, misuse, and extended warranties offered by retailers are not supported under warranty. Non-warranty repairs are available at agreed fixed repair prices.

Out of Box Failure Policy

The standard out of box failure criteria applies. Customer phones that fail very early on after the date of sale, are to be returned to Manufacturing for root-cause analysis, to guard against epidemic criteria. Manufacturing will bear the costs of early life failure.

Product Support

Customer's original phone will be repaired but not refurbished as standard. Appointed Motorola Service Hubs will perform warranty and non-warranty field service for level 2 (assemblies) and level 3 (limited PCB component). The Motorola High Technology Centers will perform level 4 (full component) repairs.

Customer Support

Customer support is available through dedicated Call Centers and in-country help desks. Product Service training should be arranged through the local Motorola Support Center.

Parts Replacement

When ordering replacement parts or equipment, include the Motorola part number and description used in the service manual.

When the Motorola part number of a component is not known, use the product model number or other related major assembly along with a description of the related major assembly and of the component in question.

In the U.S.A., to contact Motorola, Inc. on your TTY, call: 800-793-7834.

Accessories and Aftermarket Division (AAD)

Order replacement parts, test equipment, and manuals from AAD.

U.S.A.

Phone: 800-422-4210

FAX: 800-622-6210

Website: <http://businessonline.motorola.com>

Outside U.S.A.

Phone: 847-538-8023

FAX: 847-576-3023

EMEA

Phone: +49 461 803 1404

Website: <http://emeaonline.motorola.com>

Asia

Phone: +65 648 62995

Website: <http://asiaonline.motorola.com>

Specifications

General Function	Specification
Frequency Range GSM 850	824-848 MHz Tx 869-893 MHz Rx
Frequency Range GSM 900	880-915 MHz Tx (with EGSM) 925-960 MHz Rx
Frequency Range DCS 1800	1710-1785 MHz Tx 1805-1880 MHz Rx
Frequency Range PCS 1900	1850-1910 MHz Tx 1930-1990 MHz Rx
Channel Spacing	200 kHz
Channels	174 EGSM, 374 DCS, 374 PCS, 124 GSM 850 carriers with 8 channels per carrier
Modulation	GMSK at BT = 0.3
Transmitter Phase Accuracy	5 Degrees RMS, 20 Degrees peak
Duplex Spacing	45 MHz
Frequency Stability	± 0.10 ppm of the downlink frequency (Rx)
Operating Voltage	+3.25V dc to +4.2V dc (battery) +4.8V dc to +5.6V dc (external connector)
Transmit Current Drain	90-280 mA average talk current drain
Stand-by Current drain	3.3 mA (DRX2), 2 mA (DXR9) typical
Temperature Range	-10° C to +55° C (+15° F to +130° F)
Dimensions, with 810 mAh Li Ion battery	113mm x 49mm x 10.9mm (4.4 inches x 1.9 inches x 0.4 inches)
Size (Volume)	56 cc (3.41 in ³), with battery
Weight	89+ grams (3.13 oz), with battery
Battery Life, with standard 720 mAh Li-Ion Battery	Talk time up to 190 minutes Standby time up to 340 hours All talk and standby times are approximate and depend on network configuration, signal strength, and features selected. Standby times are quoted as a range from DRX=2 to DRX=9. Talk times are quoted as a range from DTX off to DTX on.
Battery Charge Time	4 hours to 90% of 710 mAh capacity
Alert volume	Max 95 dB @5cm, 0.5 Watts input

Transmitter Function	Specification
RF Power Output	32 dBm nominal GSM 850/900 29 dBm nominal GSM 1800/1900
Output Impedance	50 ohms nominal
Spurious Emissions	-36 dBm from 0.1 to 1 GHz, -30 dBm from 1 to 4 GHz

Receiver Function	Specification
Receive Sensitivity	-102.9 dBm GSM 850 -102.9 dBm GSM 900 -103.2 dBm DCS 1800 -101.2 dBm PCS 1900
RX Bit Error Rate (100k bits) Type II	< 2%

Speech Coding Function	Specification
Speech Coding Type	Regular pulse excitation/linear predictive coding with long term prediction (RPE LPC with LTP)
Bit Rate	13.0 kbps
Frame Duration	20 ms
Block Length	260 bits
Classes	Class 1 bits = 182 bits; Class 2 bits = 78 bits
Bit Rate with FEC Encoding	22.8 kbps

Product Overview

Motorola L6 i-mode mobile telephones feature Global System for Mobile communication (GSM) technology. The mobile telephone uses a simplified icon and Graphical User Interface (GUI) for easier operation, allows Short Message Service (SMS) text messaging, and includes clock, alarm, datebook, and calculator personal management tools. The L6 i-mode telephones feature VibraCall vibrating alert and a wide selection of ring tones. These tri-band phones allow roaming within the GSM 850, 1800, 1900 MHz PCS bands, or 900, 1800, 1900 MHz PCS bands depending on flexing.

L6 i-mode telephones support GPRS and SMS in addition to traditional circuit switched transport technologies.

The telephones are made of polycarbonate plastic with a metal enclosure. The display, camera, speaker, the 17-key keypad, (not including navigation keys), transceiver Printed-circuit Board (PCB), microphone, charger, headphone connectors, and power button are contained within the candy bar form-factor housing. The 720 mAh Lithium Ion (Li-Ion) battery provides up to 190 minutes of talk time with up to 340 hours of standby time¹. These telephones feature a 128 x 160 pixel display.

Features

The L6 i-mode telephones use advanced, self-contained, sealed, custom integrated circuits to perform the complex functions required for GSM communication. Aside from the space and weight advantage, microcircuits enhance basic reliability, simplify maintenance, and provide a variety of operational functions.

Features available in the L6 i-mode telephone include:

- Bluetooth class 2, mini USB connector
- Downloadable java apps, images & MP3 Polyphonic Ringtones
- i-mode browser, email, SMS iMMS
- i-mode step 2
- Doja 1.5
- GPRS Class 10
- Push to Talk over cellular with GPRS
- 2MB of end user embedded memory
- PIM functionality
- Calling Line Identification
- VGA camera with 3x digital zoom
- Dynamic Idle (Motorola/4th Pass server)
- 500 capacity phonebook

Upon receipt of a call, the calling party's phone number is compared to the phonebook. If the number matches a phonebook entry, that name displays. If there is no phonebook entry, the incoming phone number displays. If no caller identification information is available, an incoming call message displays.



User must subscribe to a caller line identification service through their service provider.

1. All talk and standby times are approximate and depend on network configuration, signal strength, and features selected. Standby times are quoted as a range from DRX=2 to DRX=9. Talk times are quoted as a range from DTX off to DTX on.

Personal Information Management

The L6 i-mode wireless telephones contain a built-in datebook with alarm reminders, message center, and a phonebook.

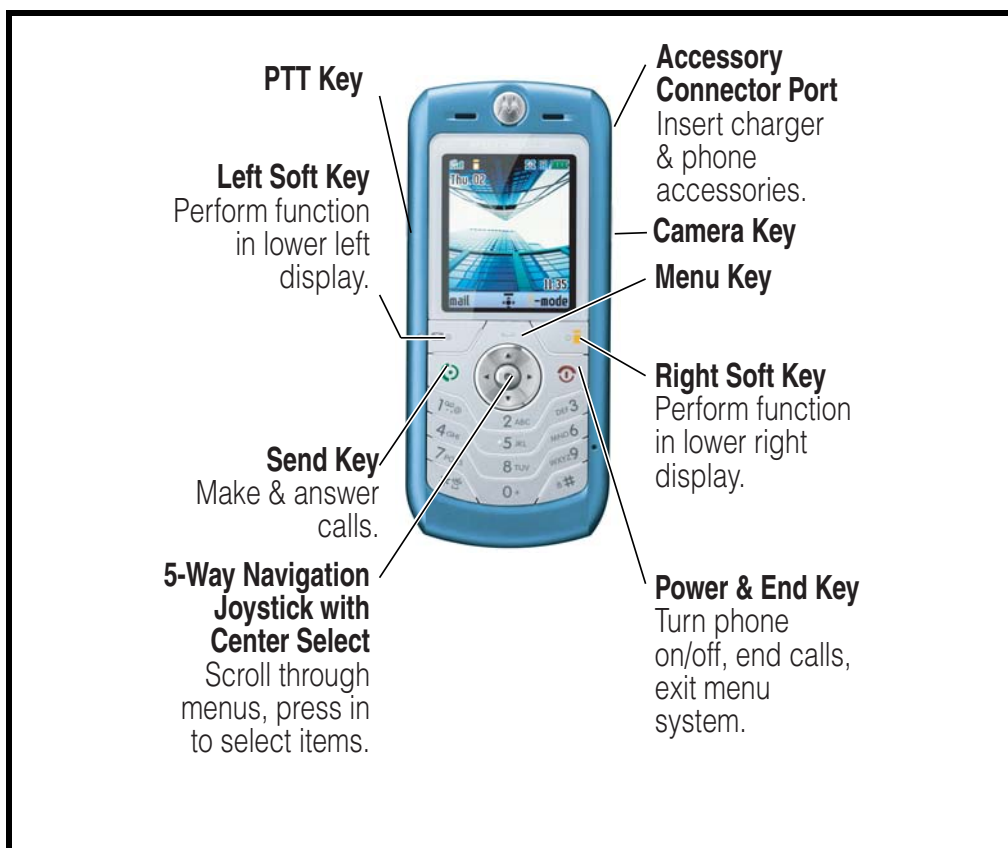
Other Features

Detailed descriptions of other features available for the L6 i-mode wireless telephones are in the appropriate User's Guide listed in the Related Publications section toward the end of this manual.

General Operation

Controls, Indicators, and Input/Output (I/O) Connectors

The telephone's controls are on the front of the device and on the keyboard as shown in Figure 1. Indicator icons are displayed on the LCD (see Figure 2).



060704o

Figure 1. Controls and Indicators

Menu Navigation

L6 i-mode telephones have a simplified icon and GUI. A scroll key allows you to move easily through menus.

Liquid Crystal Display (LCD)

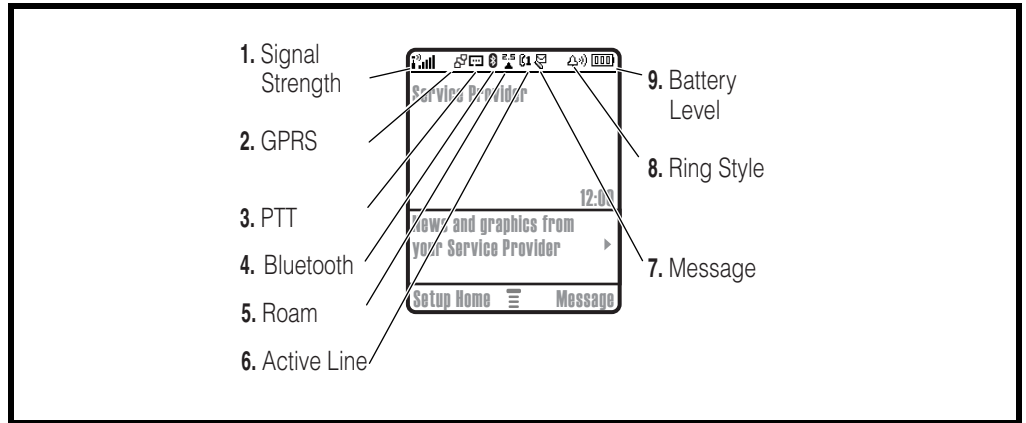
The L6 i-mode phones feature a 128 x 160 65K color CSTN color display offering 7 lines of text, 1 line of icons, and 1 line of prompts. The display provides constant graphical representations of battery capacity and signal strength, as well as the real-time clock.

Display animation makes the phone's icon menu move smoothly as you scroll up and down.



Whether a phone displays all indicators depends on the programming and services to which the user subscribes.

Figure 2 shows common icons displayed on the LCD.



050917o

Figure 2. Display Idle Screen

Alert Settings

Alerts can be set to ring only, vibrate only, vibrate then ring, or no ring or vibrate.

Battery Function

Battery Charge Indicator

The telephone displays a battery charge indicator icon in the idle screen to indicate the battery charge level. The gauge shows 4 levels: 100%, 50%, 20%, and 5%.

Battery Removal

Removing the battery causes the phone to shut down immediately and lose any pending work. For example, (partially entered phonebook entries or outgoing messages).



All batteries can cause property damage and/or bodily injury, such as burns if a conductive material, such as jewelry, keys, or beaded chains touch exposed terminals. The conductive material may complete an electrical circuit (short circuit) and become quite hot. Exercise care when handling any charged battery, particularly when placing it inside a pocket, purse, or other container with metal objects.



If the battery is removed while receiving a message, the message is lost.



To ensure proper memory retention, turn the phone OFF before removing the battery.

Operation

For detailed operating instructions, refer to the appropriate User's Guide listed in the Related Publications section toward the end of this manual.

Tools and Test Equipment

Table 1 lists the tools and test equipment used on L6 i-mode telephones. Use either the listed items or equivalents.

Table 1. General Test Equipment and Tools

Motorola Part Number ¹	Description	Application
See Table 5.	Charger	Used to charge battery and power phone.
0180386A82	Antistatic Mat Kit (includes 66-80387A95 antistatic mat, 66-80334B36 ground cord, and 42-80385A59 wrist band)	Provides protection from damage to phone caused by electrostatic discharge (ESD).
6680388B67	Disassembly Tool, plastic with flat and pointed ends (manual opening tool)	Used during assembly/disassembly.
6680388B01	Tweezers, plastic	Used during assembly/disassembly.
RSX4043-A	Torque Driver	Used to remove and replace screws.
—	Torque Driver Bit T-5 Plus, Apex 440-5IP Torx Plus or equivalent	Used with torque driver.
HP34401A ²	Digital Multimeter	Used to measure battery voltage.
W.FL2-LP-N	Coaxial cable connector extraction tool	Used to remove cable connector from circuit board.
W.FL-LP-IN	Coaxial cable connector insertion tool	Used to attach cable connector to circuit board.

1. To order in North America, contact Motorola Aftermarket and Accessories Division (AAD) by phone at (800) 422-4210 or FAX (800) 622-6210; Internationally, you can reach AAD by phone at (847) 538-8023 FAX (847) 576-3023.

2. Not available from Motorola. To order, contact Hewlett Packard at (800) 452-4844.

Disassembly

This section describes how to disassemble a L6 i-mode telephone. Tools and equipment used are listed in Table 1.



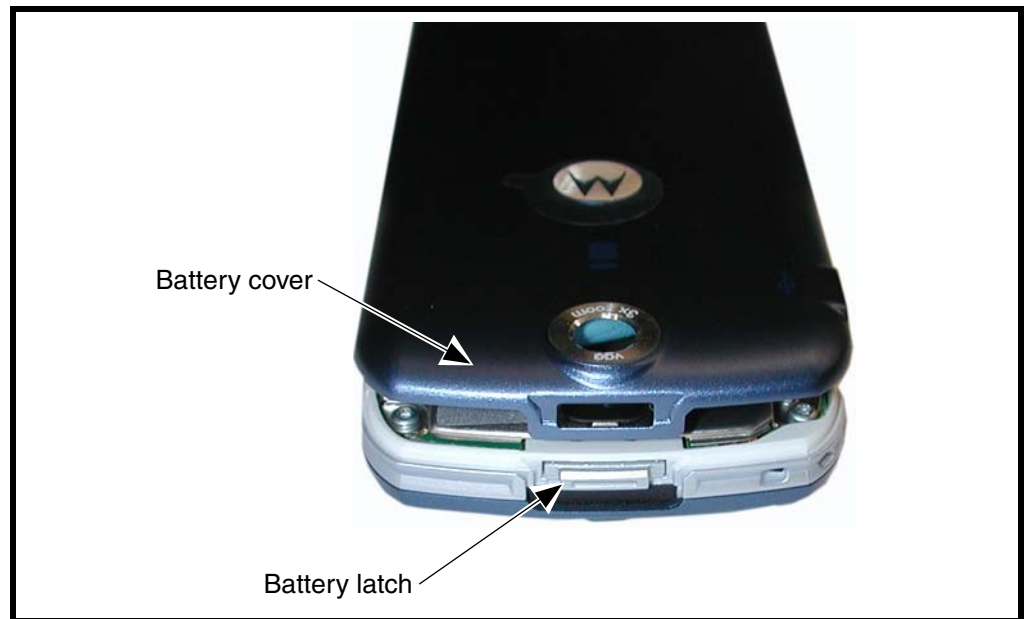
Many of the integrated devices used in this phone are vulnerable to damage from ESD. Ensure adequate static protection is in place when handling, shipping, and servicing any internal components.



Avoid stressing the plastic in any way to avoid damage to either the plastic or internal components.

Removing and Replacing the Battery Cover

1. Ensure the phone is turned off.
2. Press the battery cover latch on the bottom of the phone, and lift the battery cover up from the phone and lift it off (see Figure 3).



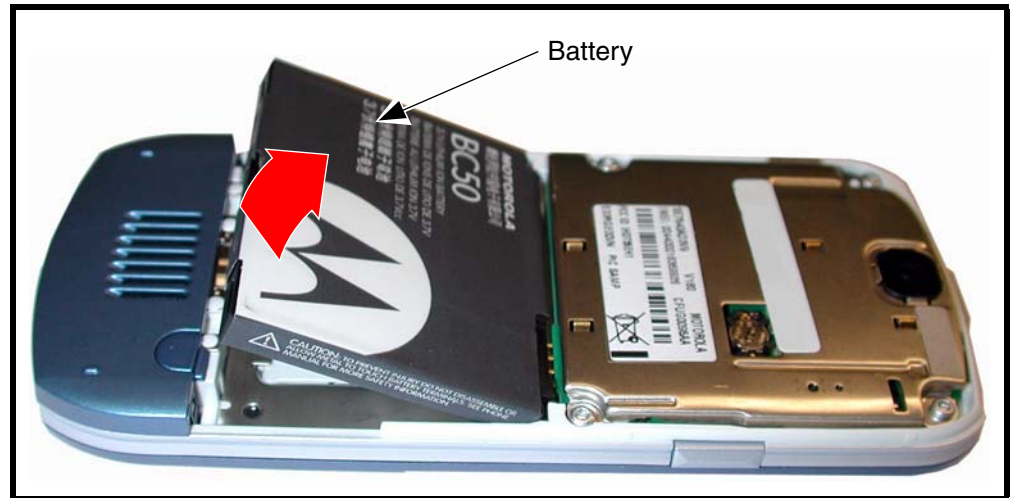
060719o

Figure 3. Removing the Battery Cover

3. To replace, align the battery cover with the rear housing.
4. Place the battery cover on the rear housing and gently press the battery cover until it snaps into place.

Removing and Replacing the Battery

1. Remove the battery cover as described in the procedures.
2. Lift the top end of the battery as indicated by the arrow in Figure 4.
3. Lift the battery up and out of the battery compartment.



060718o

Figure 4. Removing and Replacing the Battery

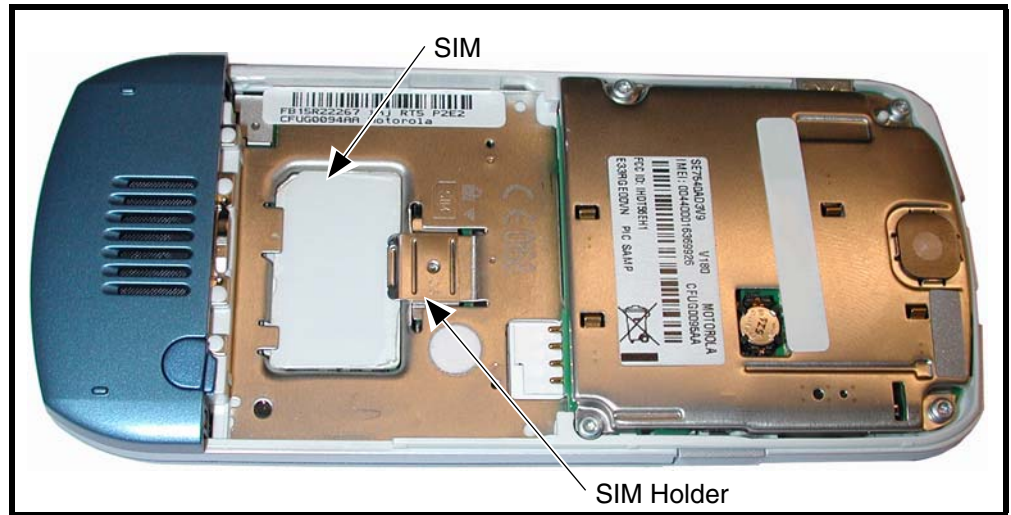


There is a danger of explosion if the Lithium-Ion battery is replaced incorrectly. Replace only with the same type of battery or equivalent as recommended by the battery manufacturer. Dispose of used batteries according to the manufacturer's instructions.

4. To replace, insert the bottom of the battery into the battery compartment with contacts facing downward.
5. Press the top of the battery into the battery compartment.
6. Replace the battery cover as described in the procedures.

Removing and Replacing the SIM

1. Remove the battery cover and battery as described in the procedures.
2. Unlock the SIM holder by sliding it away from the SIM.
3. Lift up the SIM and remove it from the phone (see Figure 5).



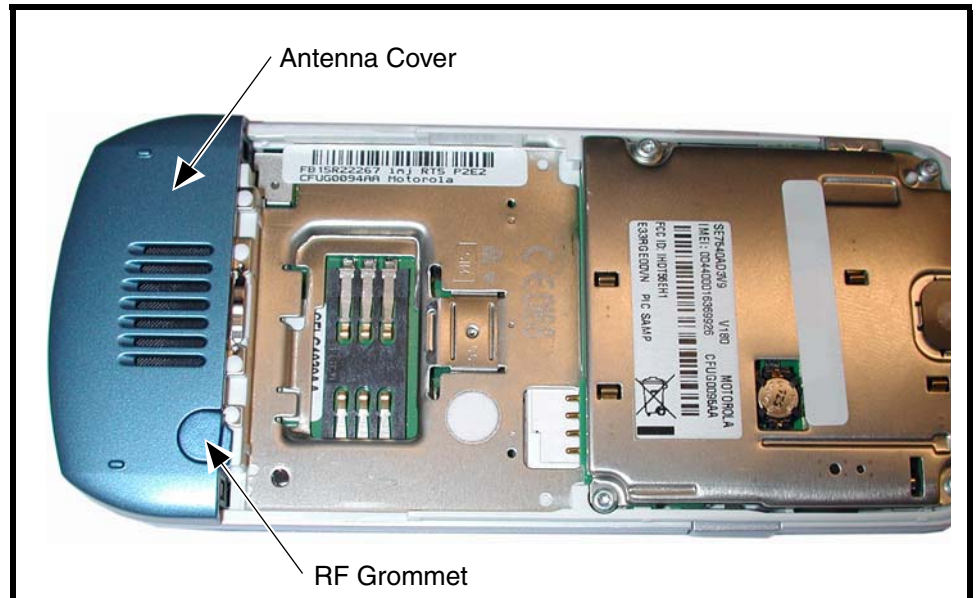
0607200

Figure 5. Removing and Replacing the SIM

4. To replace, slide the SIM into the SIM holder with the notched corner located as shown.
5. Lock the SIM holder by sliding it toward the SIM.
6. Reassemble the battery and battery cover as described in the procedures.

Removing and Replacing the Antenna

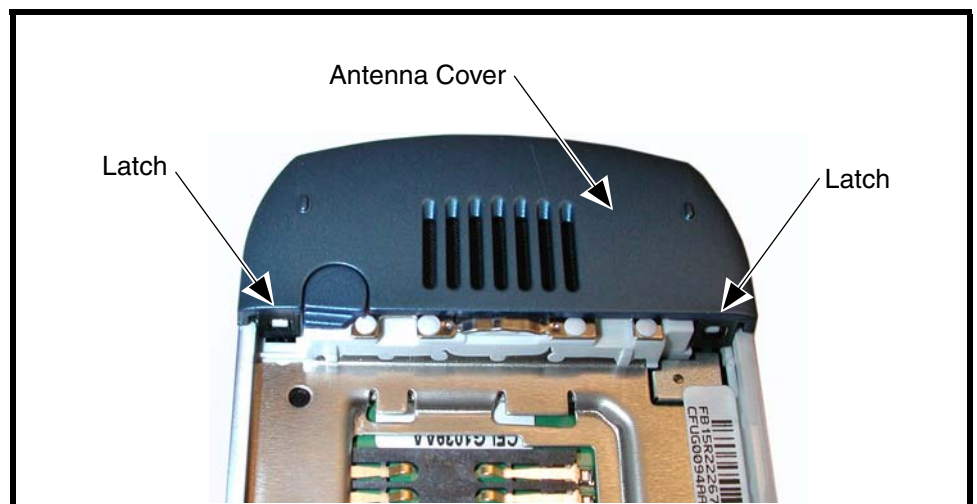
1. Remove the battery cover, battery and SIM, as described in the procedures.
2. Use the disassembly tool to gently pry off the RF grommet located on the antenna cap (see Figure 6).



060721o

Figure 6. Removing and Replacing the RF Grommet

3. Use the metal tweezers to release the antenna cover latches (see Figure 9).

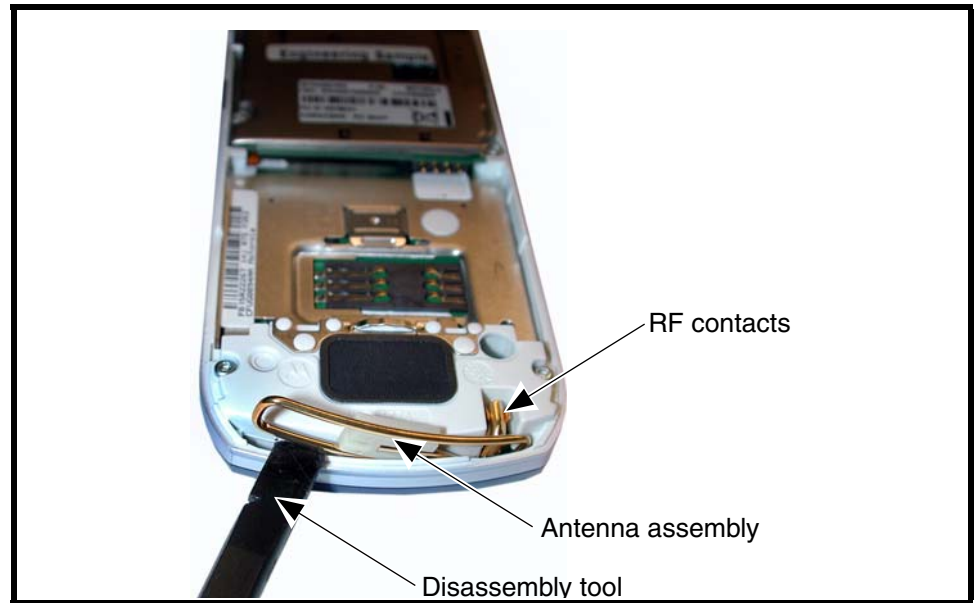


060722o

Figure 7. Removing and Replacing the Antenna Cover

4. Carefully use the metal tweezers to release two latches on the top end of the antenna cover, then carefully lift the antenna cover away from the phone.

5. Use the disassembly tool to lift the side of the antenna out of the phone (see Figure 8).



060723o

Figure 8. Removing and Replacing the Antenna

6. Carefully remove the antenna from the phone.
7. To replace, insert the antenna into the antenna slot on the phone. Ensure the antenna makes contact with the RF contacts on the PC board.
8. Align the antenna cover over the antenna.
9. Place the curved edge of the antenna cover onto the phone.
10. Carefully press the straight edge of the antenna cover into place until the latches snap into place.
11. Insert the RF grommet fully into the opening on the antenna cover.
12. Reassemble the SIM, battery, and battery cover as described in the procedures.

Removing and Replacing the Transceiver PC Board Shield

1. Remove the battery cover, battery, SIM, and antenna, as described in the procedures.
2. Using a Torx Plus driver with a T5 bit, remove the 6 housing screws from the phone. Set the screws aside for re-use (see Figure 9).

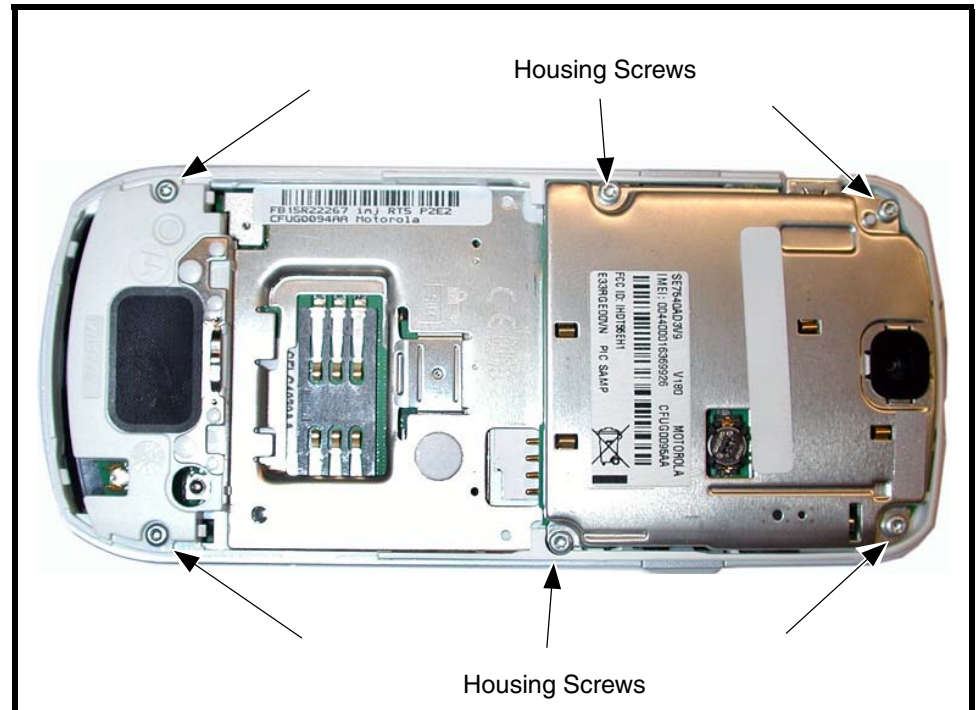
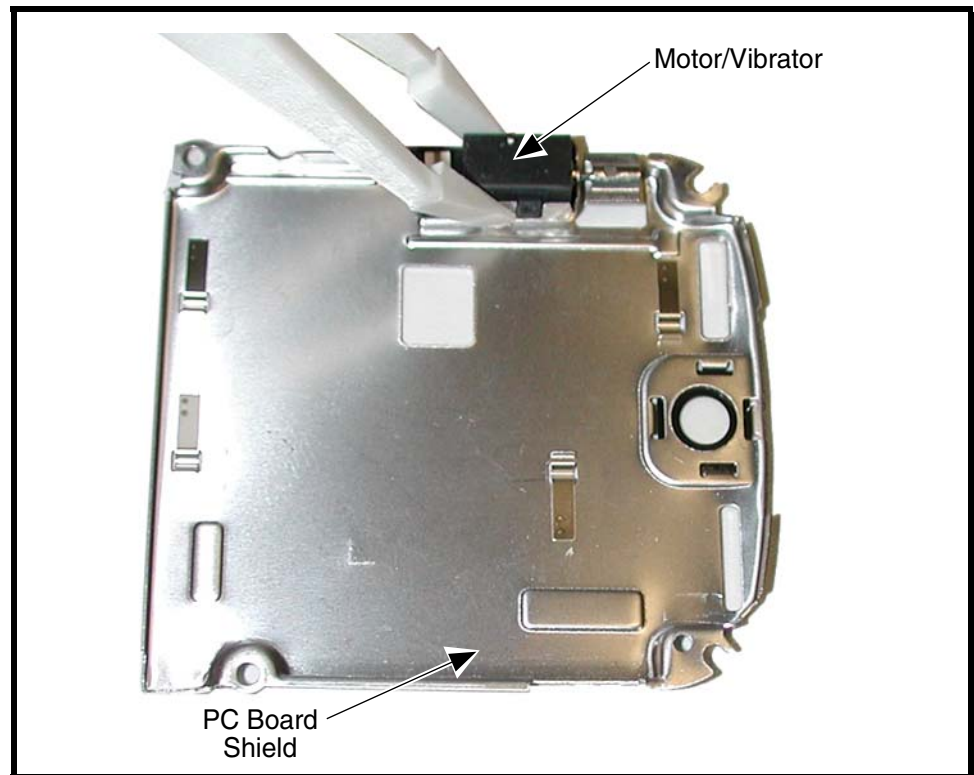


Figure 9. Removing and Replacing the Transceiver PC Board Shield

3. Lift the metal shield away from the phone.
4. To replace, place the PC board shield onto the phone. Ensure the screw holes are aligned.
5. Insert and tighten the 6 T5 screws to a torque setting of 16 Ncm. Do not overtighten.
6. Reassemble the antenna, SIM, battery, and battery cover as described in the procedures.

Removing and Replacing the Motor/Vibrator

1. Remove the battery cover, battery, SIM, antenna, and transceiver PC board shield as described in the procedures.
2. Turn the PC board shield over to reveal the motor/vibrator assembly.
3. Use the disassembly tool or the plastic tweezers to lift the motor/vibrator assembly from the PC board shield (see Figure 10).



050809o

Figure 10. Removing and Replacing the Motor/Vibrator

4. To replace, place the motor/vibrator assembly into its slot on the PC board shield. Ensure that the elastomeric contacts are facing upward, and the motor flywheel can rotate freely.
5. Reassemble the transceiver PC board shield, antenna, SIM, battery, and battery cover as described in the procedures.

Removing and Replacing the Transceiver PC Board

1. Remove the battery cover, battery, SIM, and rear housing as described in the procedures.

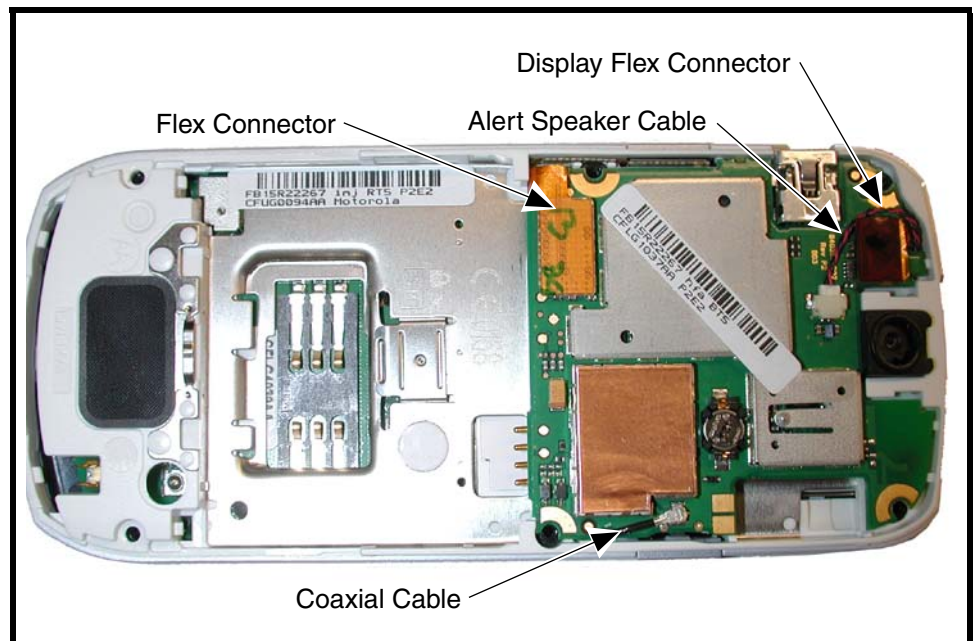


This product contains static-sensitive devices. Use anti-static handling procedures to prevent ESD and component damage.



The flexible printed cable (FPC) (flex) is easily damaged. Exercise extreme care when handling.

2. Insert the flat end of the disassembly tool under the flex connector to unseat it from the transceiver PC board (see Figure 11).



0607250

Figure 11. Removing the Transceiver PC Board Connectors

3. Use the metal tweezers to unseat the alert speaker connector from its socket on the transceiver PC board (see Figure 11).
4. Use the disassembly tool to unseat the flex connector from its socket on the Transceiver PC board (see Figure 11).

5. Use the coaxial cable extraction tool (see Figure 12) to unseat the coaxial cable connector from the transceiver PC board (see Figure 13).

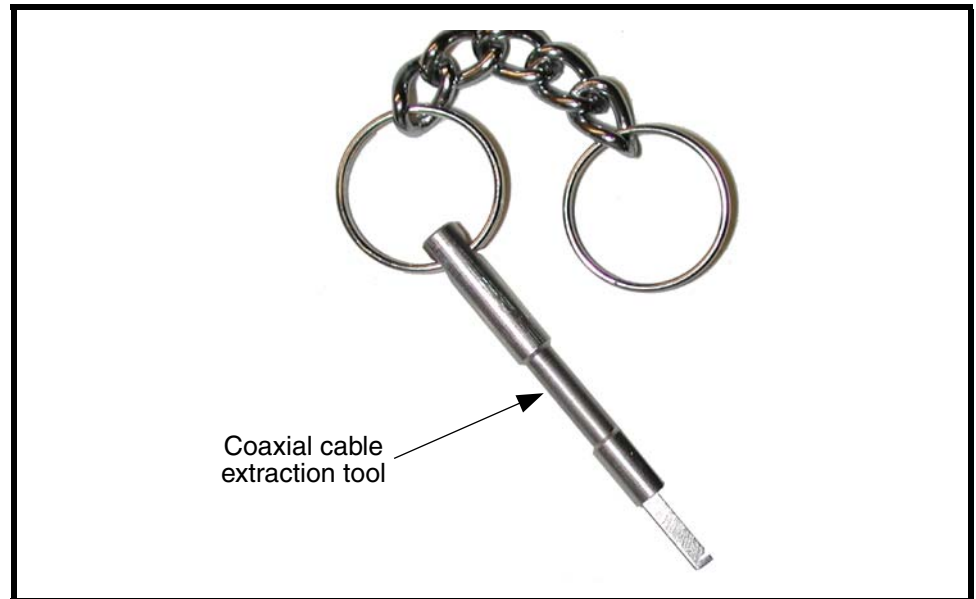


Figure 12. Coaxial Cable Extraction Tool

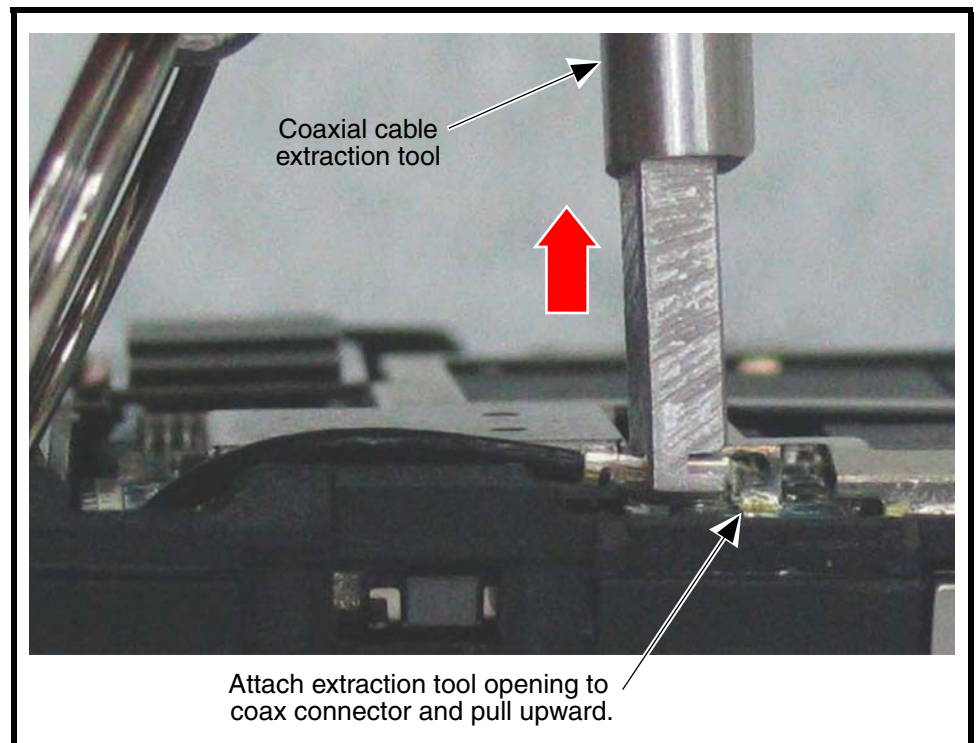


Figure 13. Coaxial Cable Extraction

6. Carefully lift one side of the transceiver PC board out of the phone. Be careful to avoid damage to the two flex cables and the coaxial cable.
7. Lift the transceiver PC board completely out of the phone.
8. To replace, carefully insert the side edge of the transceiver PC board into the phone chassis.
9. Carefully re-attach the alert speaker wire connector, display flex connector, the main flex connector, and the coaxial cable, to the transceiver PC board (see Figure 15).

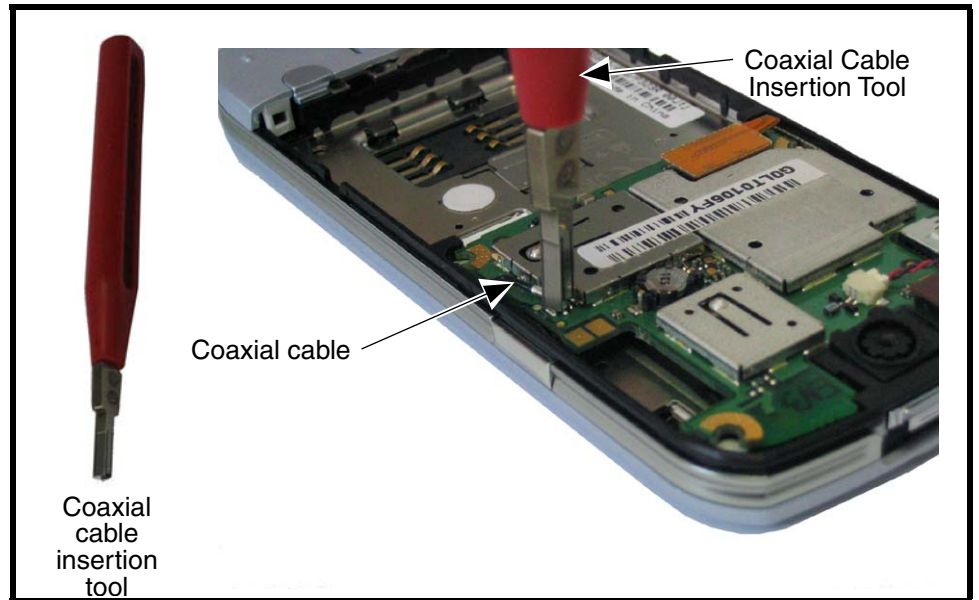


Figure 14. Coaxial Cable Connector insertion

10. Reassemble the antenna, SIM, battery, and battery cover as described in the procedures.

Removing and Replacing the Flex Assembly

1. Remove the battery cover, battery, SIM, rear housing, and transceiver PC board as described in the procedures.



The flexible printed cable (FPC) (flex) is easily damaged. Exercise extreme care when handling.

2. Remove the side key (see Figure 15).



051764o

Figure 15. Removing the Side Key

3. Use the metal tweezers to push the flex out from the chassis side wall (see Figure 16).

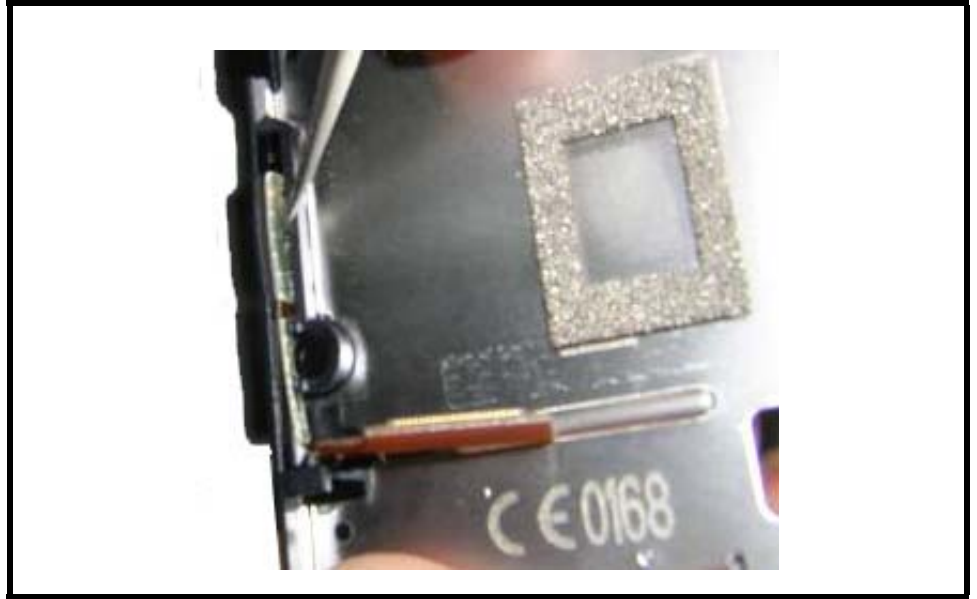


Figure 16. Chassis Side Wall

0517660

4. Remove the flex from the chassis side wall (see Figure 17).

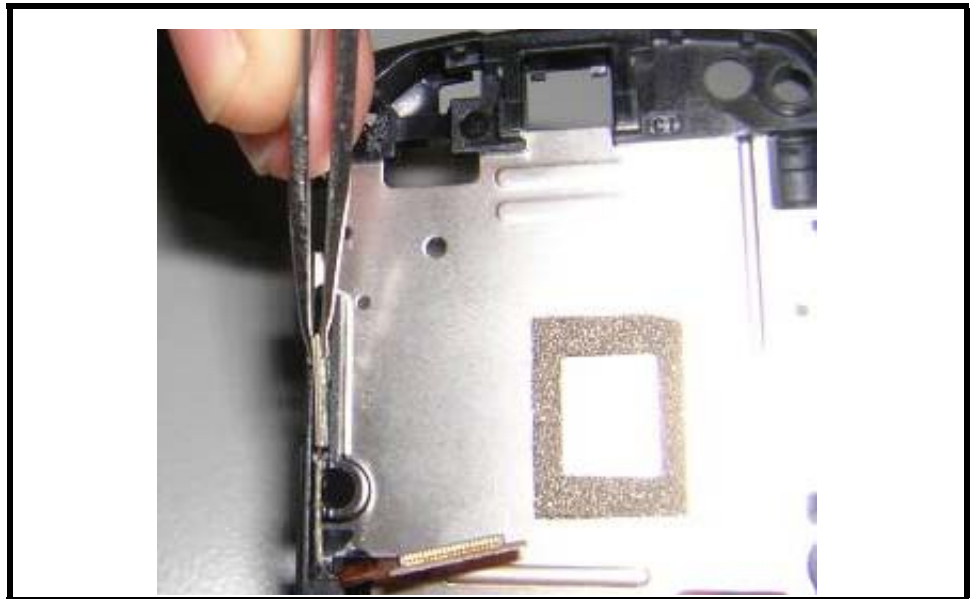
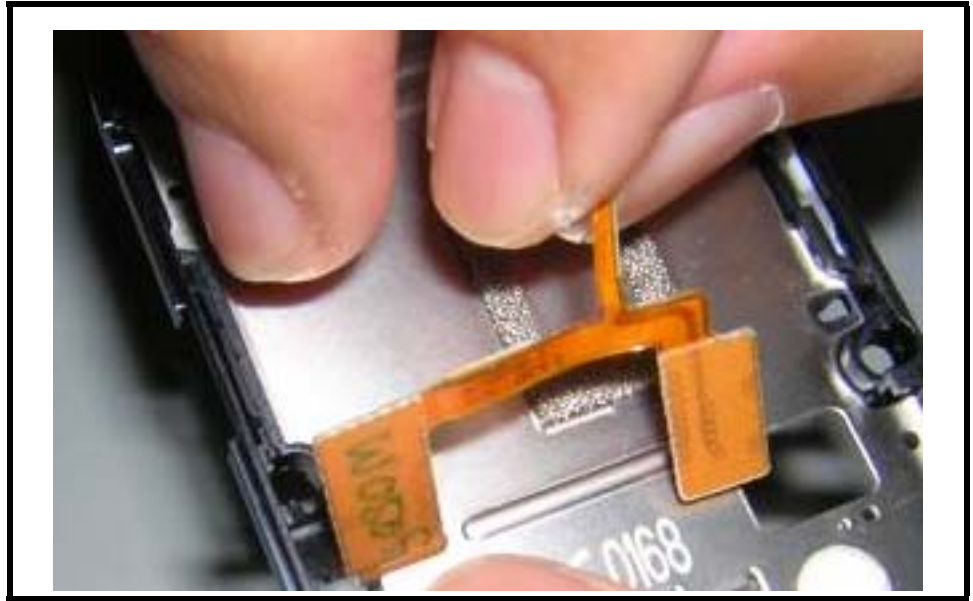


Figure 17. Removing the Flex from the Chassis Side Wall

0517690

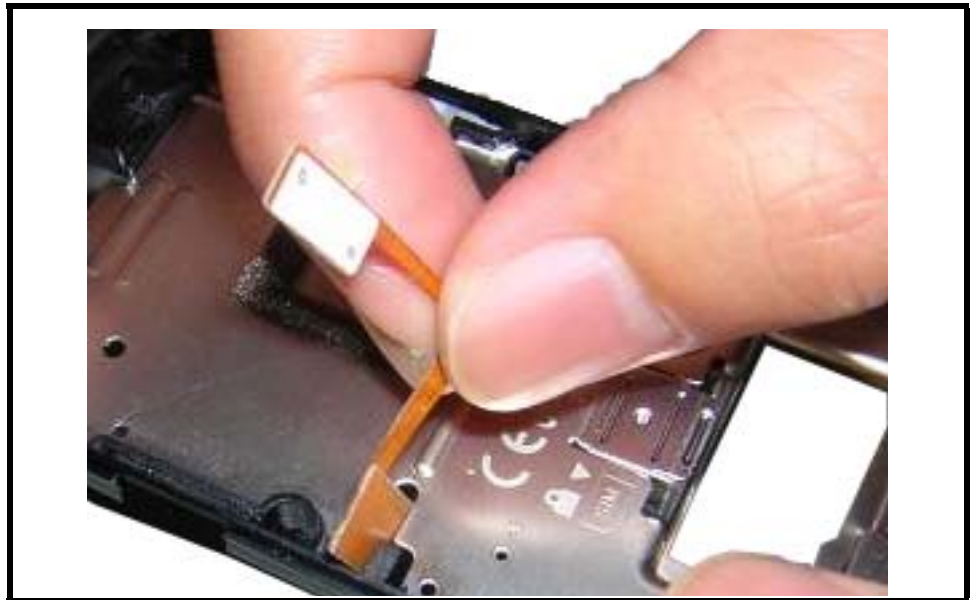
5. Remove the flex from the chassis (see Figure 18).



0517800

Figure 18. Removing the Flex from the Chassis

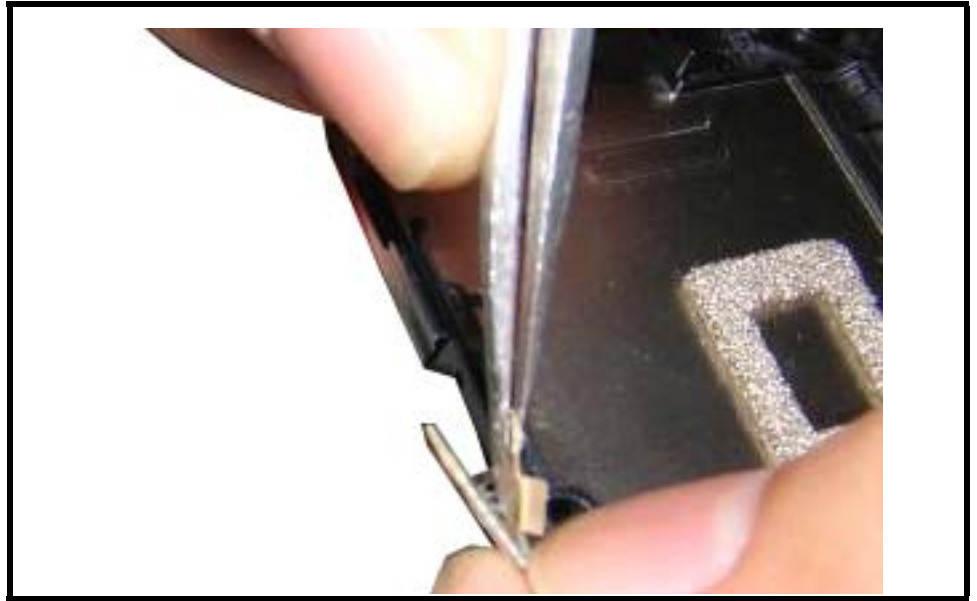
6. To replace, Insert the flex through the chassis (see Figure 19).



0517810

Figure 19. Insert the Flex Through the Chassis

7. Remove the adhesive liner (see Figure 20).



051782o

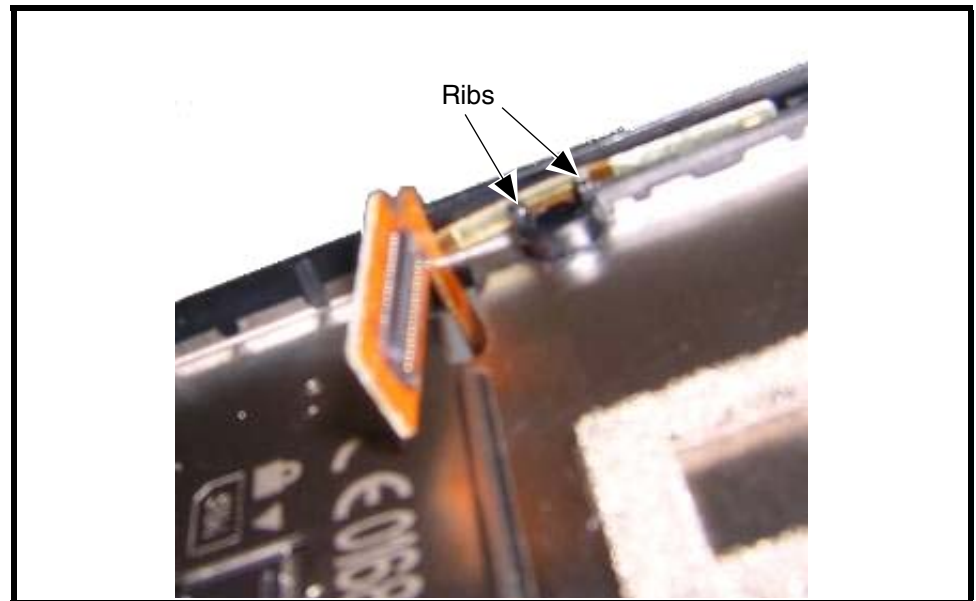
Figure 20. Removing the Adhesive Liner

8. Adhere the flex onto the chassis side wall. Use the locating pins as a guide (see Figure 21). The arm of the flex must be secured by two ribs (see Figure 22).



051783o

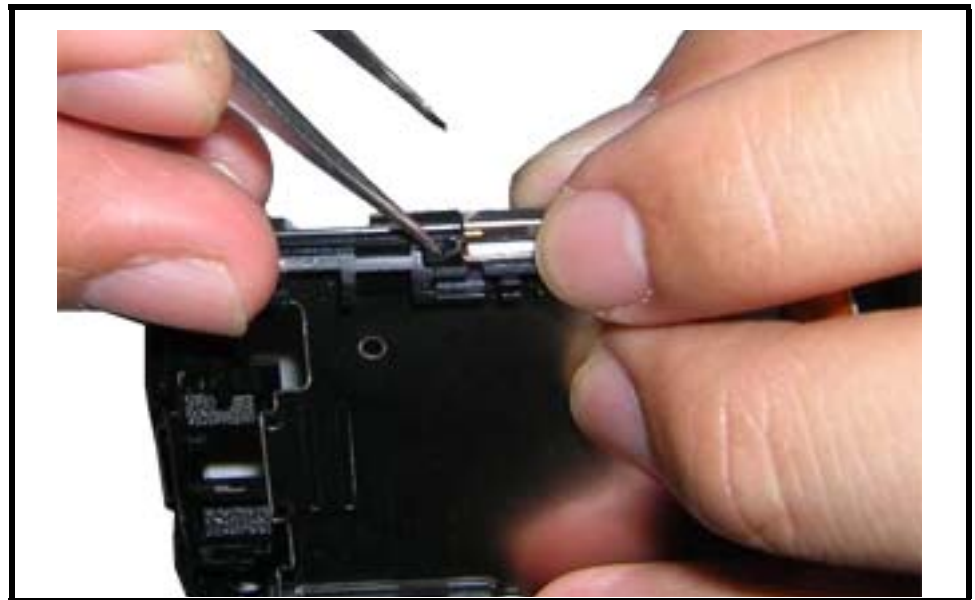
Figure 21. Adhering the flex onto the Chassis Side Wall



0517840

Figure 22. Flex Arm

9. Insert the side key into the chassis (see Figure 23).



0517850

Figure 23. Replacing the Side Key

10. Replace the transceiver PC board, rear housing, SIM, battery, and battery cover as described in the procedures.

Removing and Replacing the Camera Assembly

Remove the battery cover, battery, SIM, antenna, and transceiver PC board as described in the procedures.

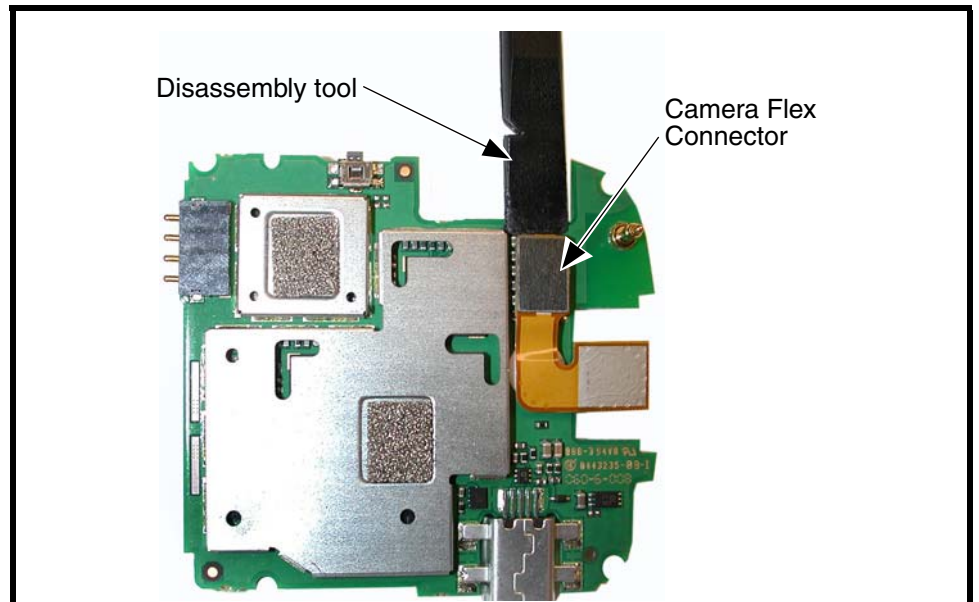


This product contains static-sensitive devices. Use anti-static handling procedures to prevent ESD and component damage.



The flexible printed cable (FPC) (flex) is easily damaged. Exercise extreme care when handling.

11. Use the disassembly tool to unseat the camera assembly flex connector from the transceiver PC board assembly (see Figure 24).



0607260

Figure 24. Removing the Camera Assembly

12. Lift the camera assembly away from the transceiver PC board.
13. To replace, align the camera assembly to the transceiver PC board.
14. Carefully press the camera flex connector into its socket on the transceiver PC board.
15. Reassemble the transceiver PC board, antenna, SIM, battery and battery cover as described in the procedures.

Removing and Replacing the Front Housing

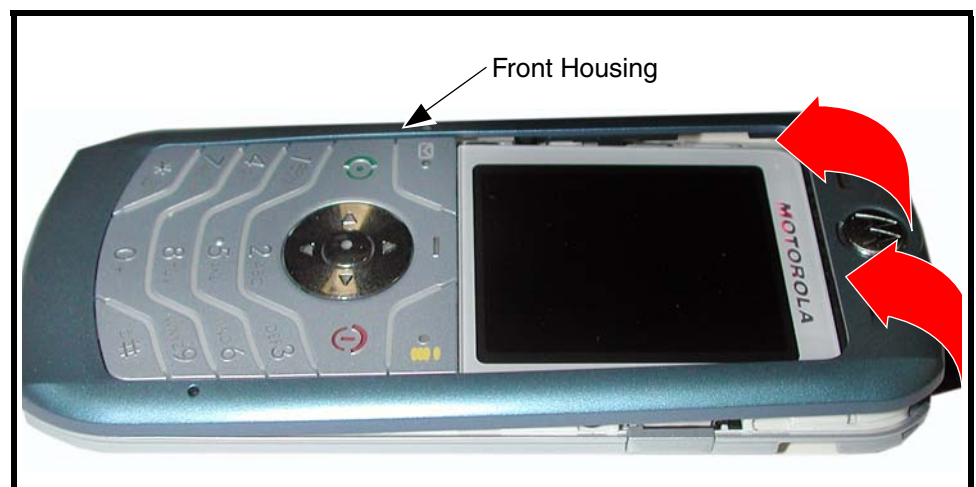
1. Remove the battery cover, battery, SIM, antenna, and transceiver PC board as described in the procedures.
2. Insert the disassembly tool between the front housing and the chassis assembly (see Figure 25).



060727o

Figure 25. Releasing the Front Housing Catches

3. Slide the disassembly tool around the phone between the front housing and the phone to release the housing catches along the sides of the front housing (see Figure 26).



060728o

Figure 26. Removing the Front Housing

4. Carefully lift the bottom end of the front housing over the phone.
5. Use the disassembly tool to separate the earpiece speaker from the front housing (see Figure 27).

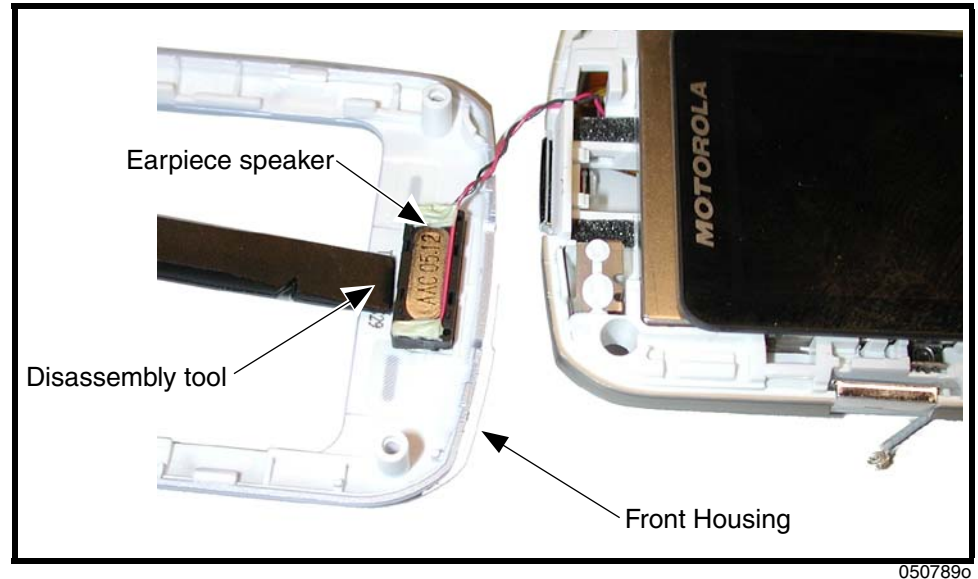
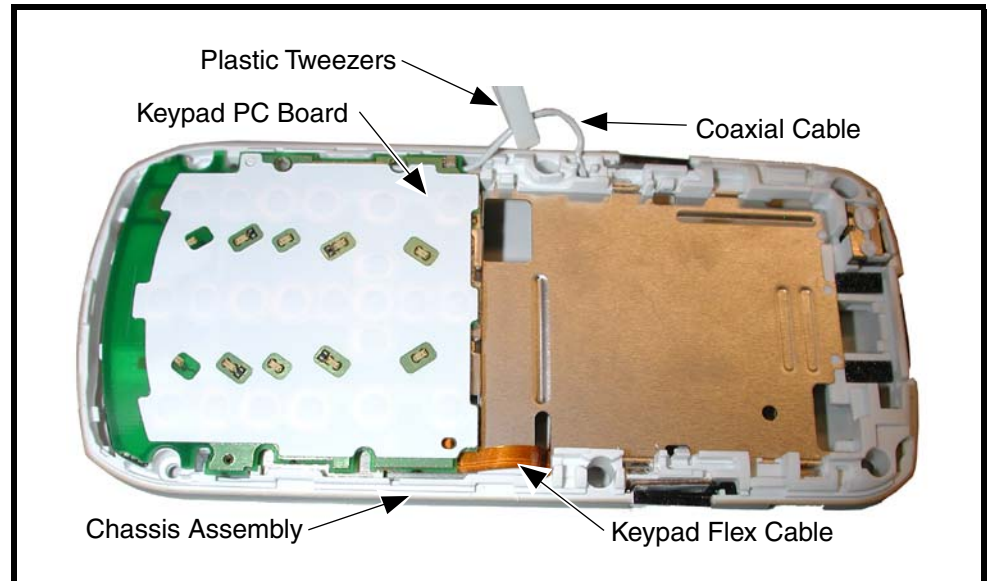


Figure 27. Removing the Earpiece Speaker from the Front Housing

6. Remove the front housing.
7. To replace, attach the earpiece speaker to the front housing.
8. Rotate the front housing over the chassis to align the front housing to the chassis.
9. Carefully and gently press the front housing into the chassis until all of the housing catches are engaged.
10. Reassemble the transceiver PC board, antenna, SIM, battery and battery cover as described in the procedures.

Removing and Replacing the Keypad PC Board

1. Remove the battery cover, battery, SIM, antenna, transceiver PC board, and front housing, as described in the procedures.
2. Use the plastic tweezers to remove the end of the coaxial cable from the chassis assembly (see Figure 28).



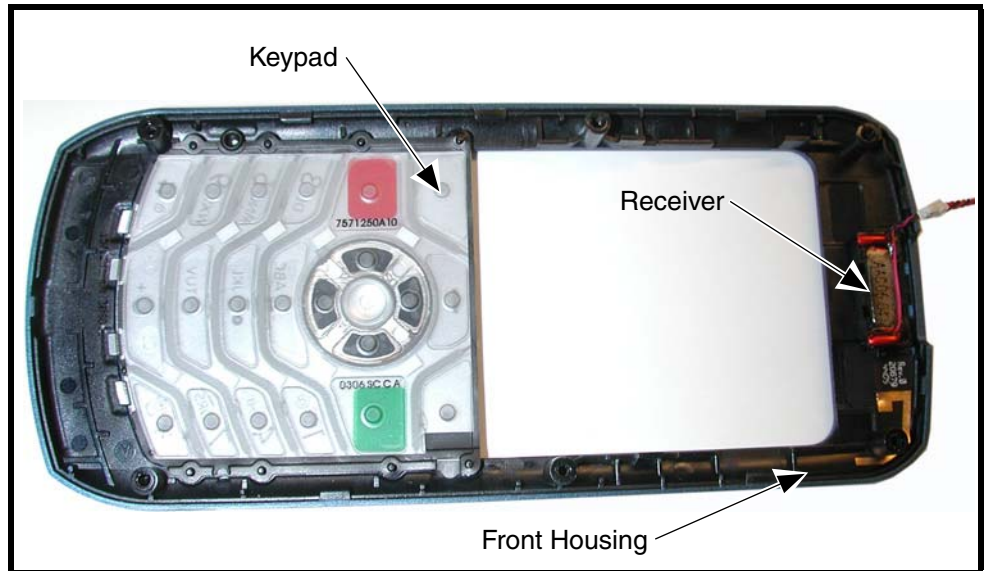
041103o

Figure 28. Removing and Replacing the Keypad PC Board

3. To replace, align the keyboard connector of the keyboard with the keyboard connector on the transceiver board and press it into place.
4. Reassemble the transceiver PC board, rear housing, battery, and battery cover as described in the procedures.

Removing and Replacing the Keypad

1. Remove the battery cover, battery, SIM, rear housing, and transceiver PC board, as described in the procedures.
2. Lift the keypad up from one corner as shown in Figure 29 and remove it from the front housing.



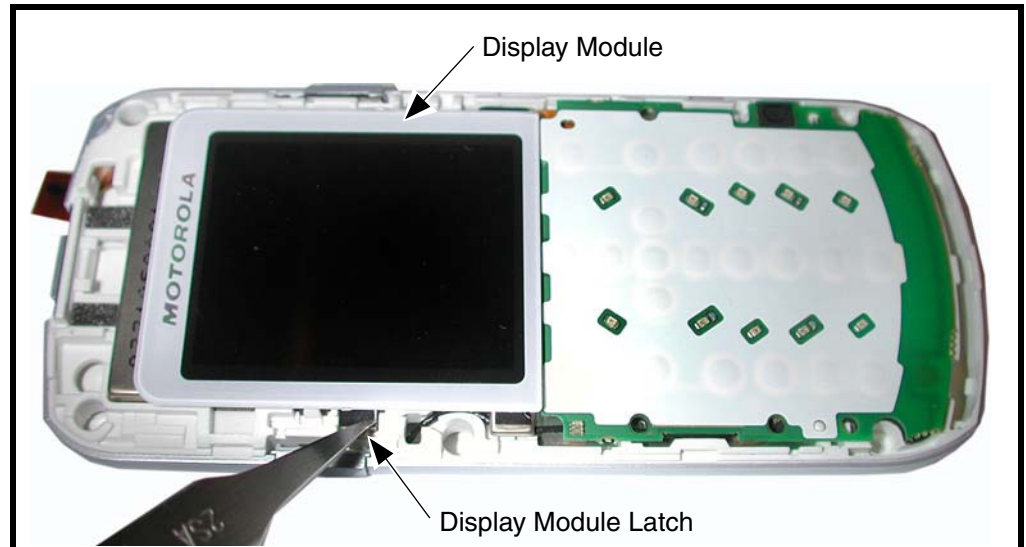
0607290

Figure 29. Removing and Replacing the Keypad

3. To replace, align the keypad with the front housing and press it into place. Use the keypad guide holes in the front housing for correct keypad placement.
4. Reassemble the transceiver PC board, rear housing, SIM, battery, and battery cover as described in the procedures.

Removing and Replacing the Display Module

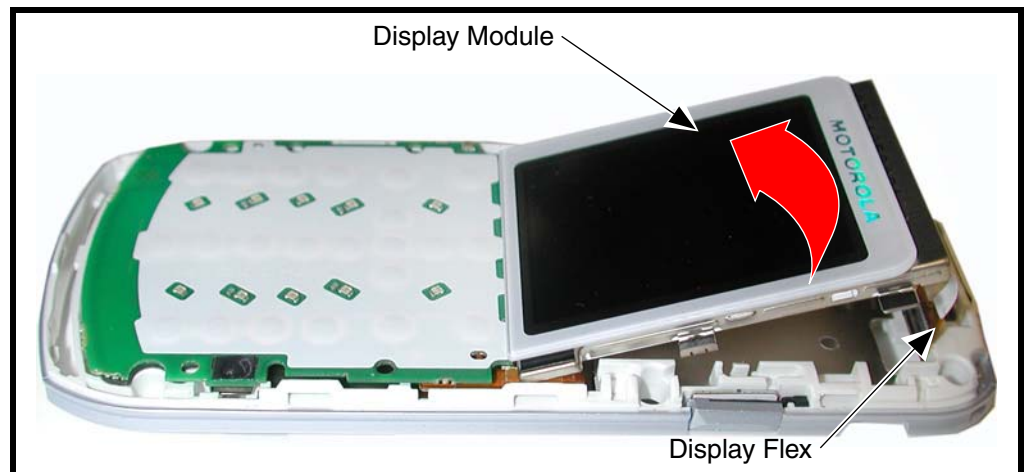
1. Remove the battery cover, battery, rear housing, and transceiver PC board as described in the procedures.
2. Use the metal tweezers to release the display module assembly latch located at the side of the display module (see Figure 31).



0607300

Figure 30. Removing and Replacing the Display Module Latches

3. Lift the top edge of the display module (see Figure 31).



0607310

Figure 31. Removing the Display Module

4. Carefully thread the display flex cable through the slot in the chassis assembly and lift the display module away from the chassis.
5. To replace, align the display module to the chassis assembly.

6. Hold the side of the display module near the flex cable away from the chassis assembly.
7. Carefully thread the display flex connector through the opening on the chassis assembly.
8. Lower the display module fully onto the chassis assembly and gently press it into place.
9. Reassemble the transceiver PC board, antenna, SIM, battery, and battery cover as described in the procedures.

Subscriber Identity Module (SIM) and Identification Label

SIM

A SIM is required to access the existing local GSM network, or remote networks when traveling (if a roaming agreement has been made with the provider).

The SIM card contains:

- All the data necessary to access GSM services
- The ability to store user information such as phone numbers
- All information required by the network provider to provide access to the network

Identification

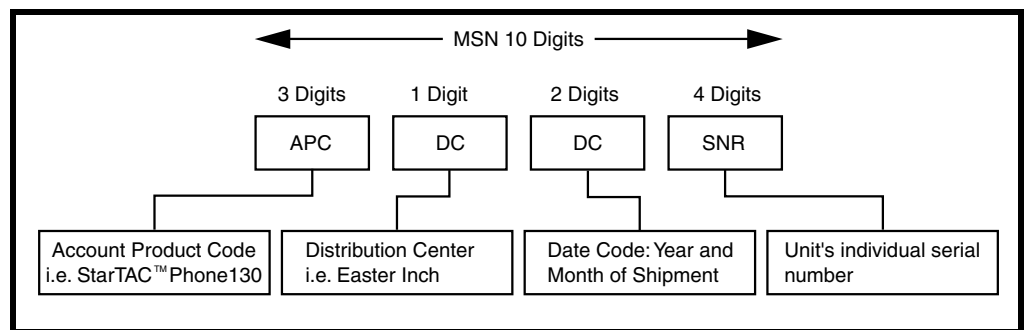
Each Motorola GSM phone is labeled with a variety of identifying numbers. The following information describes the current identifying labels.

Mechanical Serial Number (MSN)

The MSN is an individual unit identity number and remains with the unit throughout its life.

The MSN can be used to log and track a phone on Motorola's Service Center Database.

The MSN is divided into 4 sections as shown in Figure 32.



000807a

Figure 32. MSN label breakdown

International Mobile Station Equipment Identity (IMEI)

The International Mobile station Equipment Identity (IMEI) number is an individual number unique to the PCB and is stored within the unit's memory.

The IMEI uniquely identifies an individual mobile station and thereby provides a means for controlling access to GSM networks based on mobile station types or individual units. The full IMEI structure is listed in Table 2.

Table 2. IMEI Number Breakdown

TAC	Serial Number	Check Digit
NNXXXXXX	ZZZZZZ	A

Where

TAC Type Allocation Code, formerly known as Type Approval Code

NN Reporting body identifier

XXXXXX Type Identifier

ZZZZZZ Individual unit serial number

A Phase 1 = 0.
Phase 2 = check digit defined as a function of all other IMEI digits

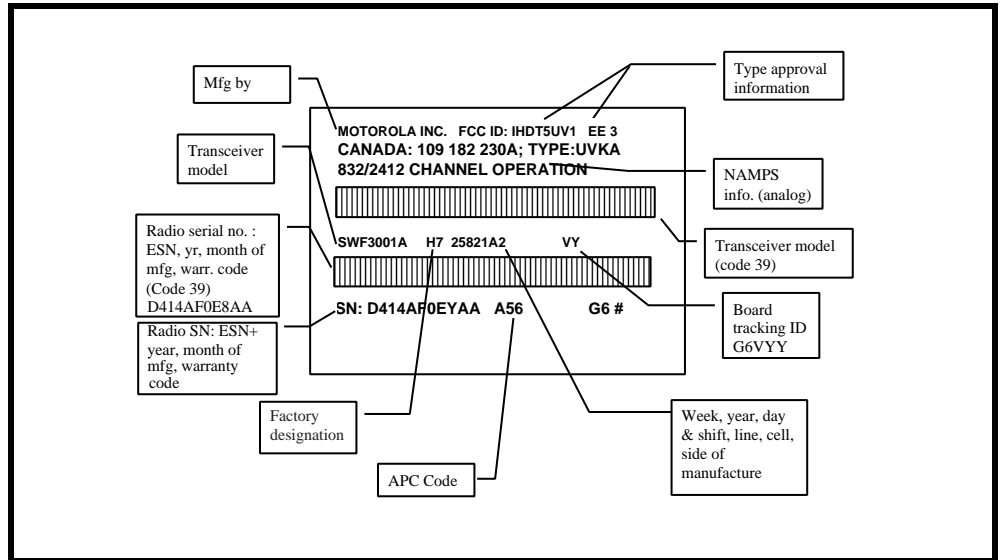
Other label number configurations present are:

- **TRANSCIVER NUMBER:** Identifies the product type. Normally the SWF number. (i.e. V100).
- **PACKAGE NUMBER:** Identifies the equipment type, mode, and language in which the product is shipped.

Telephone Identification

Identification Label

Each Motorola GSM phone is labeled with a variety of identifying numbers. Figure 33 describes the current identifying labels.



0204630

Figure 33. Telephone Identification Label

Troubleshooting

Troubleshooting Chart

Table 3. Level 1 and 2 Troubleshooting Chart

Symptom	Probable Cause	Verification and Remedy
1. Telephone will not turn on or stay on.	a) Battery either discharged or defective.	Measure battery voltage across a 50 ohm (>1 Watt) load. If battery voltage is <3.25 Vdc, recharge the battery using the appropriate battery charger. If battery will not recharge, replace the battery. If battery is not at fault, proceed to b.
	b) Battery terminals open or misaligned.	Visually inspect battery terminals on both the battery and the telephone. Realign and, if necessary, either replace the battery or refer to a Level 3 Service Center for battery connector replacement. If battery terminals are not at fault, proceed to c.
	c) Transceiver board defective.	Remove the transceiver board assembly. Substitute a known good transceiver board and temporarily reassemble the phone. Press the Power/End key; if phone turns on and stays on, disconnect the dc power source and reassemble the phone with the new transceiver board. Verify that the fault has been cleared.
2. Telephone exhibits poor reception or erratic operation such as calls frequently dropping or weak or distorted audio.	a) Antenna defective.	Check connection between the antenna and the transceiver board. If the connection is OK, substitute a known good antenna. If the fault is still present, proceed to b.
	b) Transceiver board defective.	Replace the transceiver board (refer to 1c). Verify that the fault has been cleared and reassemble the phone with the new transceiver board.
3. Display is erratic.	a) Display module defective	Temporarily replace the display module with a known good display module. Verify that the fault is cleared and reassemble the phone with the new display module. If the fault is still present, proceed to b.
	b) Transceiver board defective.	Replace the transceiver board (refer to 1c). Verify that the fault has been cleared and reassemble the phone with the new transceiver board.
4. Incoming call alert transducer audio is distorted.	a) Alert transducer defective	Temporarily replace the alert transducer with a known good alert transducer. Verify that the fault is cleared and reassemble the phone with the new alert transducer. If the fault is still present, proceed to b.
	b) Faulty transceiver board.	Replace the transceiver board (refer to 1c). Verify that the fault has been cleared and reassemble the phone with the new alert transducer.
5. Telephone transmit audio is weak. (usually indicated by called parties complaining of difficulty in hearing voice).	a) microphone obstructed by user while holding the phone	Verify transmit audio quality. If transmit audio quality is still weak and microphone is not obstructed, proceed to b.
	b) Microphone defective.	Replace the microphone as described in the procedures. If fault is not cleared, proceed to c.

Table 3. Level 1 and 2 Troubleshooting Chart (Continued)

Symptom	Probable Cause	Verification and Remedy
	c) Transceiver board defective.	Replace the transceiver board (refer to 1c). Verify that the fault has been cleared and reassemble the phone with the new transceiver board.
6. Receive audio from earpiece speaker is weak or distorted.	a) Connections to or from transceiver board defective.	Check connection from the earpiece to the transceiver board. If connection is not at fault, proceed to b.
	b) Earpiece speaker defective.	Temporarily replace the speaker with a known good speaker. Ensure good connection. Place a call and verify improvement in earpiece audio. If fault is cleared, reassemble the phone with the good transceiver board. If fault is not cleared, proceed to c.
	c) Transceiver board defective.	Replace the transceiver board (refer to 1c). Verify that the fault has been cleared and reassemble the phone with the new transceiver board.
7. Vibrator feature not functioning.	a) Vibrator defective.	Replace vibrator. If the fault has not been cleared, proceed to b.
	b) Transceiver board defective.	Replace the transceiver board (refer to 1c). Verify that the fault has been cleared and reassemble the phone with the new transceiver board.
8. Internal Charger not working.	Faulty charger circuit on transceiver board.	Test a selection of batteries in the rear pocket of the desktop charger. Check LED display for the charging indications. If these are charging properly, then the internal charger is at fault. Replace the transceiver board assembly (refer to 1c). Verify that the fault has been cleared and reassemble the phone with the new transceiver board assembly.

The following section provides a reference for the parts associated with L6 telephones.

Exploded View Diagram

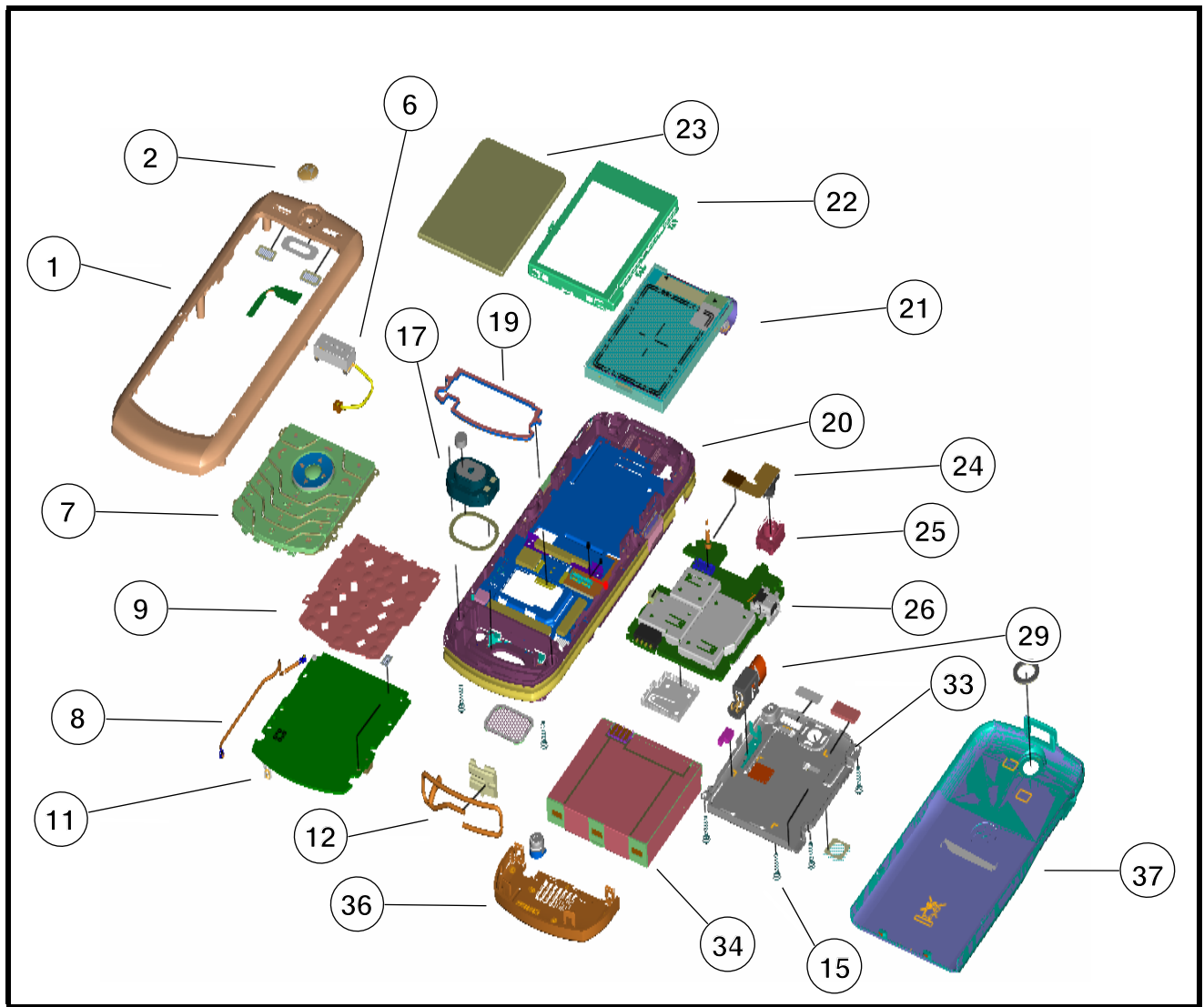


Figure 34. Exploded View Diagram

Exploded View Parts List

Table 4. Parts list

Item	Motorola Part Number	Description	Item	Motorola Part Number	Description
1	1571265A01	Front housing	20	0171373A01	Chassis assembly
2	1371263A01	Logo medallion	21	7271331A01	LCD display 128x160
3	3571266A01	Mesh, front housing	22	0771258A01	Metal display bracket
4	1170314A20	Earpiece speaker adhesive	23	6171259A01	Display lens
5	8571267A01	Bluetooth antenna	24	9471281A01	Camera module
6	0170298Z22	Earpiece speaker assembly	25	3771324A01	Camera grommet
7	7571250A01	Keypad L6 English Keypad L2 English	26	AAUG1858AA	Main PCB assembly
8	3070338B01	Coaxial cable	27	2671252A01	Shield cover
9	4071256A01	Metal dome array	28	7571369A04	PCB cover poron pad
10	3571329A05	Microphone mesh	29	5971287A01	Vibrator Ass'y w/grommet
11	AALG4329AA	Keypad PCB assembly	30	3371408A01	PCB cover label
12	8571365A01	Main antenna Euro Main antenna US	31	7571369A16	Main flex poron pad
13	0771366A01	Antenna support euro Antenna support US	32	6171261A01	Camera lens
14	3571270A01	Polyphonic speaker mesh	33	0170298Z17	Top rear cover assembly
15	0387347Y01	Screw x6	34	SNN5779A SNN5768A	Battery SC4 Battery SC5
16	327123A04	Earpiece speaker assembly	35	3771278A01	RF connector grommet
17	5088317Y01	Polyphonic Speaker	36	1571277A01	Rear bottom cover
18	3271233A06	Polyphonic speaker damper	37	1571372A01 1571249A01	Battery door L6 (SC4) Battery door L6 (SC5)
19	3271271A01	Acoustic gasket	38	3271233A03	Battery door gasket



There is a danger of explosion if the Lithium ion battery pack is replaced incorrectly. Replace only with the same type of battery or equivalent as recommended by the battery manufacturer. Dispose of used batteries according to the manufacturer's instructions.

To order parts please use the following link:

<https://accesssecure.mot.com>

(Password is required)

Accessories

Table 5. List of Accessories

Accessory Description	Accessory Type	Kit Number
Data Cable Mini USB/USB/Serial	Audio & Connectivity	SKN6371
Headset Mono One Touch w/ Send-End (EMU)	Audio & Connectivity	SYN0896
Mobile Phone Tools	Audio & Connectivity	Region-specific
Bluetooth Headset - Oakley RAZRWIRE (Mercury: NA) - H7	Bluetooth Products	98679H
Bluetooth Headset - Oakley RAZRWIRE (Pewter/Black: NA) - H7	Bluetooth Products	98677H
Bluetooth Headset - Oakley RAZRWIRE (Platinum/Rootbeer: NA) - H7	Bluetooth Products	98678H
Bluetooth Car Kit - Asia/Americas	Bluetooth Products	S9642
Bluetooth Car Kit - Euro	Bluetooth Products	S9643
Bluetooth Car Kit - HF850	Bluetooth Products	SJ0014
Bluetooth Car Kit - IHF1000 - Americas/Asia	Bluetooth Products	98676H
Bluetooth Car Kit - IHF1000 - EMEA	Bluetooth Products	CFLN1232
Bluetooth Headset - Glossy Black - HS820	Bluetooth Products	SYN9951
Bluetooth Headset - Green - HS820	Bluetooth Products	SYN0945
Bluetooth Headset - Grey - HS820	Bluetooth Products	SYN1106
Bluetooth Headset - HS850 (Paladin Refresh - Black)	Bluetooth Products	SYN1107
Bluetooth Headset - HS850 (Paladin Refresh - Blue)	Bluetooth Products	SYN1226
Bluetooth Headset (Aphrodite) - H700	Bluetooth Products	SYN1311
Bluetooth Headset (Genie Gray) - HS801	Bluetooth Products	CHYN4590AB
Bluetooth Headset (Genie Pink) - HS801	Bluetooth Products	CHYN4590AC
Bluetooth Headset (Genie Refresh - Dk Blue) - HS815	Bluetooth Products	SYN1201
Bluetooth Headset (Genie Silver) - HS801	Bluetooth Products	CHYN4590
Bluetooth Headset (Mage) - HS830	Bluetooth Products	SYN0996
Bluetooth Headset (Medusa) - H300	Bluetooth Products	SYN1297
Bluetooth Headset (Nexus) - HS805	Bluetooth Products	SYN0986
Bluetooth Headset (Paladin) - HS810	Bluetooth Products	SYN9826
Bluetooth Headset (Persephone) - H600	Bluetooth Products	SYN1303
Bluetooth Helmet Headset - HS830 (Mage)	Bluetooth Products	SYN0997
Bluetooth Mono Headset, Nickel- H500	Bluetooth Products	SYN1290
Bluetooth PC USB Adapter	Bluetooth Products	SYN0717
Bluetooth Speaker (Quadrant Refresh) - HF820	Bluetooth Products	SYN0736C
Bluetooth Speaker Quadrant - HF800	Bluetooth Products	SYN0736
Vehicle Power Adapter EMU - VC700	In-Vehicle Solutions	SYN0847
Self Install Car Kit - Smart Drive - Motorola	In-Vehicle Solutions	SYN1134
Self Install Car Kit - Smart Drive+ - Motorola	In-Vehicle Solutions	SYN1137
Smart Cable EMU - Motorola	In-Vehicle Solutions	SYN1003

Table 5. List of Accessories (Continued)

Accessory Description	Accessory Type	Kit Number
Travel Charger EMU Mid-Rate Switcher - Argentina	Power Solutions	SPN5192
Travel Charger EMU Mid-Rate Switcher - Australia	Power Solutions	SPN5193
Travel Charger EMU Mid-Rate Switcher - BRAZIL	Power Solutions	SPN5187
Travel Charger EMU Mid-Rate Switcher - EURO	Power Solutions	SPN5189
Travel Charger EMU Mid-Rate Switcher - INDIA	Power Solutions	SPN5194
Travel Charger EMU Mid-Rate Switcher - MEXICO	Power Solutions	SPN5186
Travel Charger EMU Mid-Rate Switcher - PRC	Power Solutions	SPN5188
Travel Charger EMU Mid-Rate Switcher - TWN	Power Solutions	SPN5216
Travel Charger EMU Mid-Rate Switcher - UK/HK	Power Solutions	SPN5190
Travel Charger EMU Mid-Rate Switcher - US ENG	Power Solutions	SPN5185
Travel Charger EMU Rapid Switcher - Argentina	Power Solutions	SPN5197
Travel Charger EMU Rapid Switcher - BRAZIL	Power Solutions	SPN5196
Travel Charger EMU Rapid Switcher - HK	Power Solutions	SPN5199
Travel Charger EMU Rapid Switcher - PRC	Power Solutions	SPN5198
Travel Charger EMU Rapid Switcher - US	Power Solutions	SPN5202
Charger Adapter EMU/EMU (Y-cable)	Power Solutions	skn6222
Charger Adapter - Aust/NZ Plug	Power Solutions	SYN8127
Charger Adapter - Euro Plug	Power Solutions	SYN7456
Charger Adapter - UK Plug	Power Solutions	SYN7455
Travel Charger EMU Rapid Switcher - MEXICO	Power Solutions	SPN5200
Travel Charger EMU Rapid TWN	Power Solutions	SPN5270

Programming: Software Upgrade and Flexing

Contact your local technical support engineer for information about equipment and procedures for flashing and flexing.

Index

A

alert settings 13
antenna, removing and replacing 19

B

battery
 charge indicator 13
 function 13
Battery cover, removing and replacing 16
battery, removing and replacing 16, 17

C

caller ID 10
camera assembly, removing and replacing 31
Canadian Interference-Causing Equipment regulations 4
copyrights
 computer software 5

D

disassembly 16
display module, removing and replacing 36

E

exploded view diagram 43
exploded view parts list 44

F

FCC rules 4
features
 caller ID 10
Front Housing, removing and replacing 32

I

identification
 international mobile station equipment identity 39
 mechanical serial number 38
 product 4
identification, labels 38, 40
IMEI 39
Introduction 4

K

keypad PC board, removing and replacing 34, 35
keypad, removing and replacing 35

L

LCD 12
liquid crystal display (LCD) 12

M

motor/vibrator, removing and replacing 22
MSN 38

N

names
 product 4

O

operation 12
 alert settings 13
 battery 13
 controls, indicators, and I/O connectors 12
 icons 13
 LCD 12
 menu navigation 12
overview, product 10

P

parts
 exploded view diagram 43
 exploded view parts list 44
Parts Replacement 7
product
 identification 4
 names 4
product overview 10
 features 10

R

regulatory agency compliance 4
Removing
 keypad 35
removing
 antenna 19
 battery 13, 16, 17
 battery cover 16
 camera assembly 31
 display module 36
 front housing 32
 keypad PC board 34, 35
 motor/vibrator 22
 SIM 18
 Transceiver PC Board 23

Transceiver PC Board Shield 21
replacing
 antenna 19
 battery 16, 17
 battery cover 16
 camera assembly 31
 display module 36
 front housing 32
 keypad 35
 keypad PC board 35
 keypad PC board shield 34
 motor/vibrator 22
 SIM 18
 Transceiver PC Board 23
 Transceiver PC Board Shield 21

S

serial number
 mechanical 38
service manual
 about 5
 audience 5
 conventions 6
 scope 5
service policy 6
 customer support 6
 out of box failure 6
 product support 6
shut down
 upon battery removal 13
SIM, description 38
SIM, removing and replacing 18
specifications 8
subscriber identity module (SIM) 38
support
 customer 6
 product 6

T

test equipment 15
tools, disassembly 15
Transceiver PC Board Shield, removing and replacing 21
Transceiver PC Board, removing and replacing 23
troubleshooting 41
 troubleshooting chart 41

W

warranty service 6



MOTOROLA