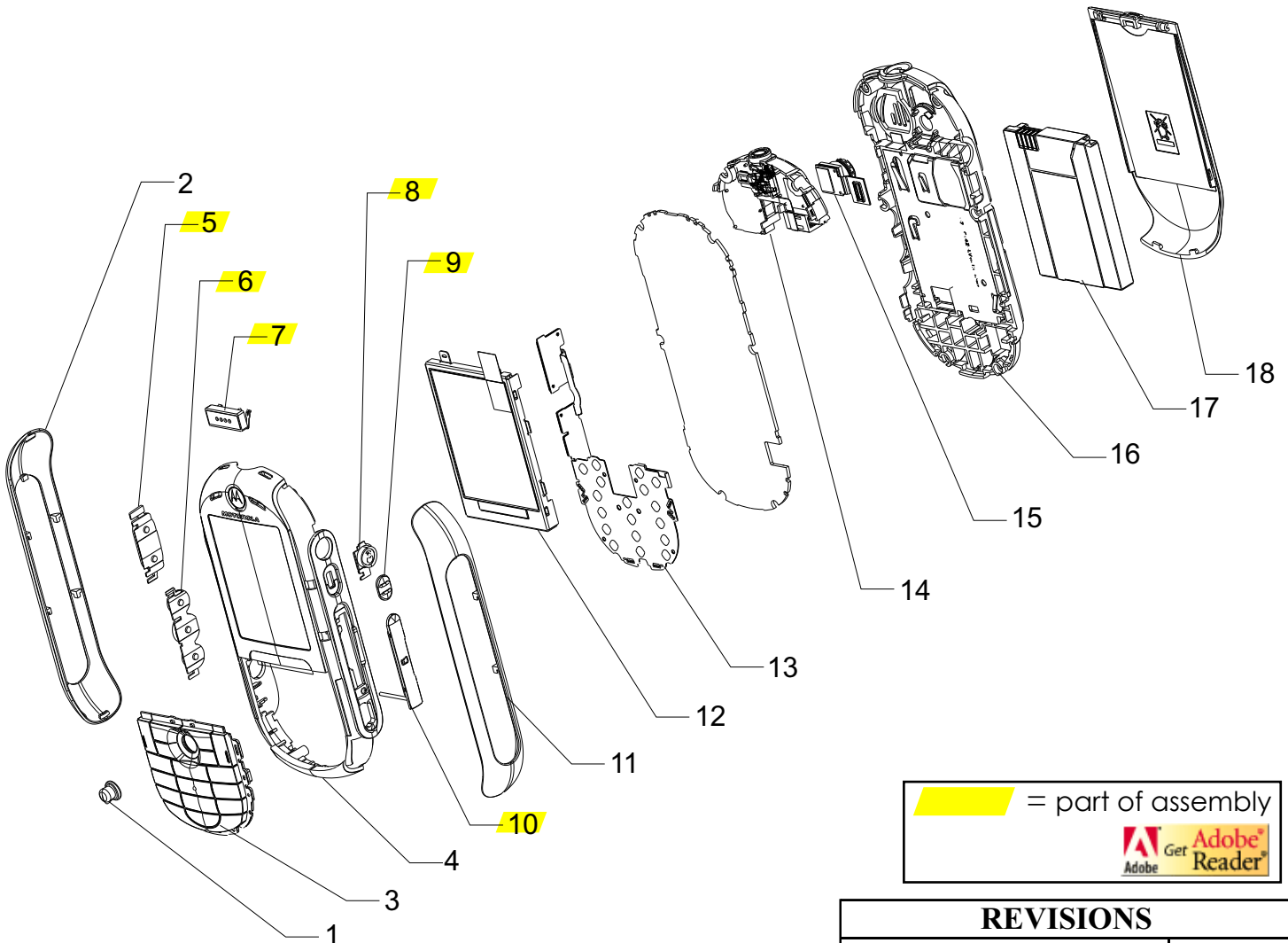


| Item No. | Motorola Part No. | Description |
|----------|-------------------|---------------------------------|
| 1 | 1588535Z01 | Joystick Cap |
| 2 | 1588544Z02 | Side Grip Left White |
| 2 | 1588544Z01 | Side Grip Left Black |
| 3 | 3888586Z08 | Keypad English White |
| 3 | 3888586Z07 | Keypad English Black |
| 3 | 3888586Z23 | Keypad Cyrillic White |
| 3 | 3888586Z22 | Keypad Cyrillic Black |
| 3 | 3888586Z17 | Keypad Arabic White |
| 3 | 3888586Z16 | Keypad Arabic Black |
| 3 | 3888586Z20 | Keypad Hebrew White |
| 3 | 3888586Z19 | Keypad Hebrew Black |
| 4 | 0188533Z26 | Front Housing Assy White |
| 4 | 0188533Z25 | Front Housing Assy Black |
| 5 | ↳3888558Z02 | ↳Button Volume White |
| 5 | ↳3888558Z01 | ↳Button Volume Black |
| 6 | ↳3888553Z02 | ↳Button Music Control White |
| 6 | ↳3888553Z01 | ↳Button Music Control Black |
| 7 | ↳5089574N08 | ↳Speaker |

| Item No. | Motorola Part No. | Description |
|----------|-------------------|-------------------------|
| 8 | ↳3888552Z02 | ↳Button VR White |
| 8 | ↳3888552Z01 | ↳Button VR Black |
| 9 | ↳3888560Z02 | ↳Button Slide White |
| 9 | ↳3888560Z01 | ↳Button Slide Black |
| 10 | ↳1588542Z02 | ↳Cover SD Card White |
| 10 | ↳1588542Z01 | ↳Cover SD Card Black |
| 11 | 1588545Z02 | Side Grip Right White |
| 11 | 1588545Z01 | Side Grip Right Black |
| 12 | 7288614Z01 | Display Assy |
| 13 | 0188532Z01 | Keyboard Assy |
| 14 | 0188530Z02 | Antenna Assy White |
| 14 | 0188530Z01 | Antenna Assy Black |
| 15 | 0188531Z01 | Camera Assy |
| 16 | 0188539Z02 | Rear Housing Assy White |
| 16 | 0188539Z01 | Rear Housing Assy Black |
| 17 | SNN5771A | Battery |
| 18 | CHHN4715A | Battery Door White |
| 18 | CHHN4714A | Battery Door Black |
| - | 0309315B35 | Screw M1.5 x 5.5mm |



= part of assembly

Go to next page

European Spare Parts
Level 1&2 Authorized

| REVISIONS | |
|---------------|-----------------------------------|
| | 2006.06.28 |
| | Version 1.1 |
| Product Name: | E2 |
| Author: | Ralf Lorenzen-Scheil, Kai Nielsen |
| | Page 1 of 2 |

| Level 1-2 Parts List Components | | | |
|---------------------------------|------------|-----------------------------------|----------|
| Ref | Part # | Description | Comments |
| - | CHYN4705A | Headset 3.5mm Stereo White | |
| - | SYN1302A | Headset 3.5mm Stereo Black | |
| - | SPN5189B | Charger Euro | |
| - | TBA | Charger UK | |
| - | 6087603L01 | RTC Battery | |
| J100 | 0988612M01 | CONNECTOR RF | |
| J2001 J800 | 0987817K02 | CONNECTOR 16 PIN | |
| J401 | 0989921N01 | CONNECTOR MAIN DISPLAY | |
| J402 | 0988224Z01 | CONNECTOR 14 PIN | |
| J901 | 0988252L01 | CONNECTOR RTC BATTERY | |
| J902 | 0988486Y01 | USB CONNECTOR | |
| M100 | 4188576Z10 | CONNECTOR SPRING CONTACT | |
| M101-M302 | 3987495Y04 | CONNECTOR SINGLE POGO | |
| M410-M417 | 1188983Y01 | UNDERFILL L-SHAPE | |
| M800 | 3988427Z03 | CONNONNECTOR SIM CARD | |
| M901 | 3988617Z02 | CONNECTOR BATTERY | |
| MK901 | 5089874N01 | MICROPHONE 300HZ TO 3400HZ,100OHM | |
| S401 | 4088758N02 | JOYSICK CLUSTER | |
| S402 | 4088126Z01 | SWITCH SCREENLOCK | |
| S403 | 4070354D03 | SWITCH | |
| U2012 | 3988101Z01 | CONNECTOR SD CARD | |
| | | | |
| | | | |
| | | | |
| | | | |
| | | | |
| | | | |
| | | | |
| | | | |
| | | | |
| | | | |
| | | | |
| | | | |
| | | | |



| REVISIONS | |
|----------------------|-----------------------------------|
| | 2006.06.28 |
| Level 1-2 Parts List | Version 1.1 |
| Product Name: | E2 |
| Author: | Ralf Lorenzen-Scheil, Kai Nielsen |
| | Page 2 of 2 |