

**MOTOROLA**

CELLULAR SERVICE

# Bulletin

CELLULAR SUBSCRIBER PRODUCTS

MOTOROLA UK  
REDWOOD  
CROCKFORD LANE  
CHINEHAM BUSINESS  
PARK  
CHINEHAM  
BASINGSTOKE  
UNITED KINGDOM  
RG24 8WQ

CSB-1389-2  
Country : UK  
Date : 7/10/2007  
APC : ALL  
Repair Level : 2

Subject GSM- V3\_05 CR-Differences between V3\_05 and V3\_06  
Model Effected V3\_05 & V3\_06

---

## Problem

Informational FSB to show the major differences between V3\_05 and V3\_06.

Service is afraid that the similarity of V3\_05 to V3\_06 design may cause confusion during repair processes. Please be advised that many parts are unique to one of the two products and must not be exchanged between the two products. Also the regulatory approval of the product would be lost by building mixtures of both assemblies.

Please treat V3\_06 as a new product, different from V3\_05. For details see below information.

## Software

V3\_05

V3\_06



## Physical

V3\_05

V3\_06

V3\_05 Battery Door

V3\_06 Battery Door

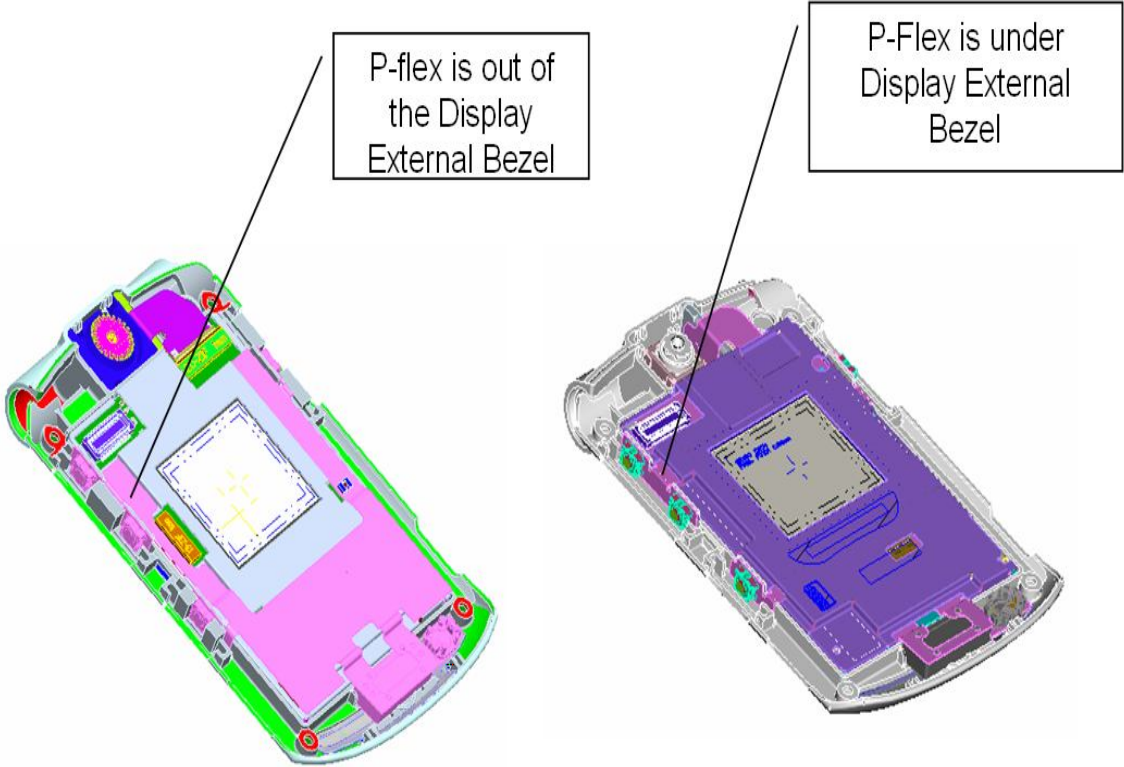
(Flip with hole)

(Metal)

(Plastic)



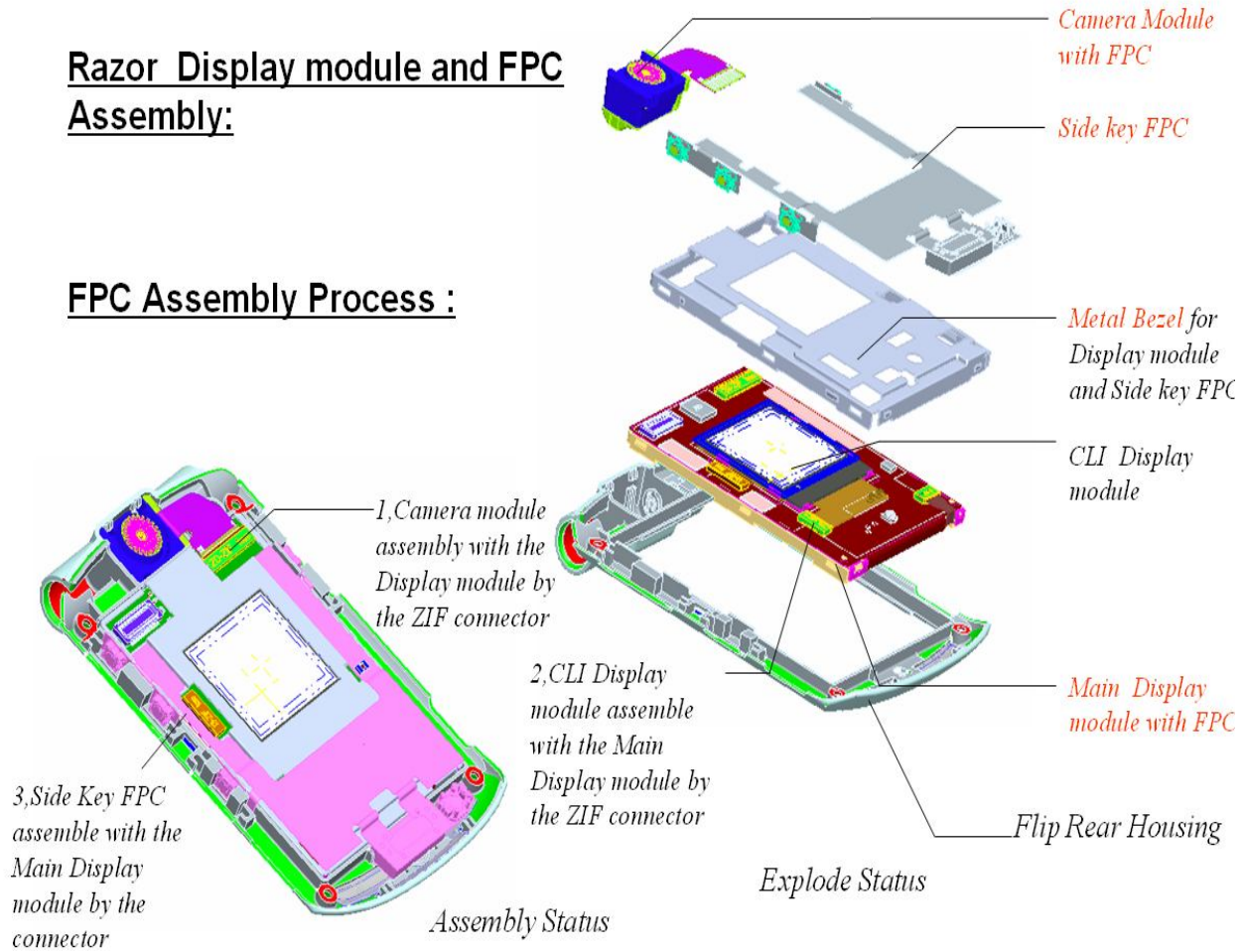
# RAZR06 Flip Structure Vs Razr 05



# RAZR05 Flip Structure

## Razor Display module and FPC Assembly:

### FPC Assembly Process :



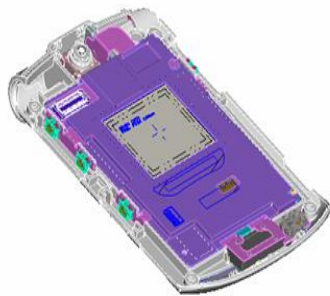
# RAZR06 Flip Structure

## Change of LCD module and FPC

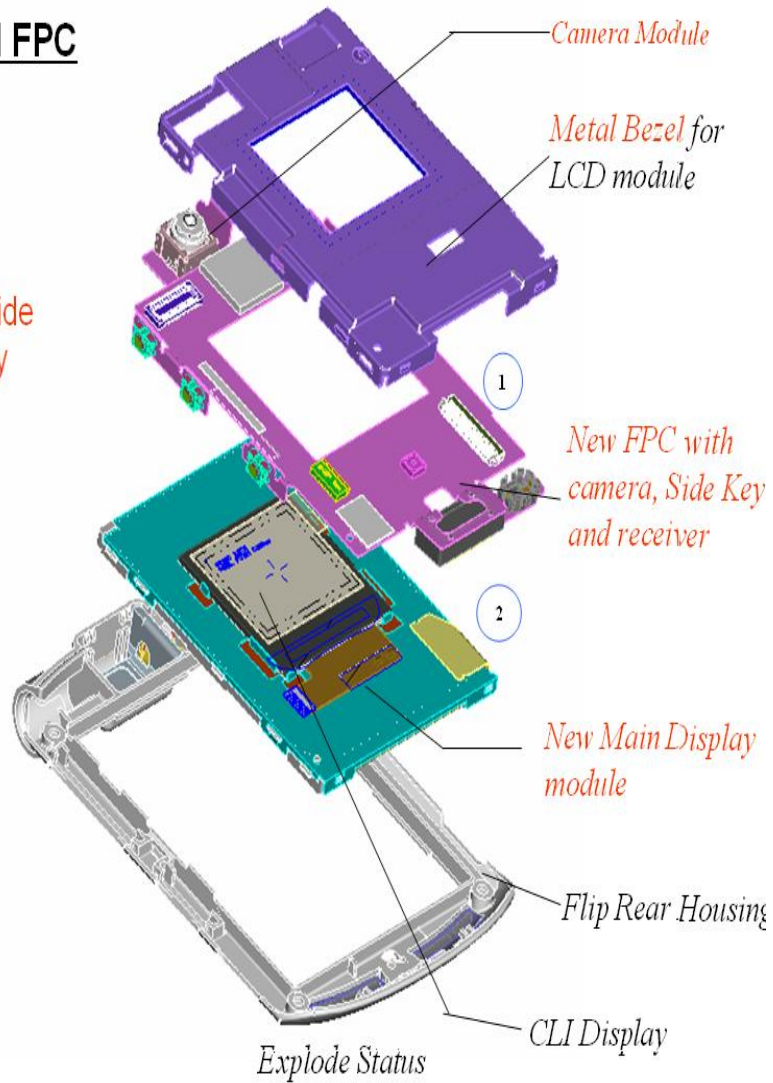
### Assembly:

(The parts write by red are re-designed. )

- Combine the Camera FPC, Side key FPC and the Main Display FPC into to one new FPC;
- Modify the Metal Bezel.



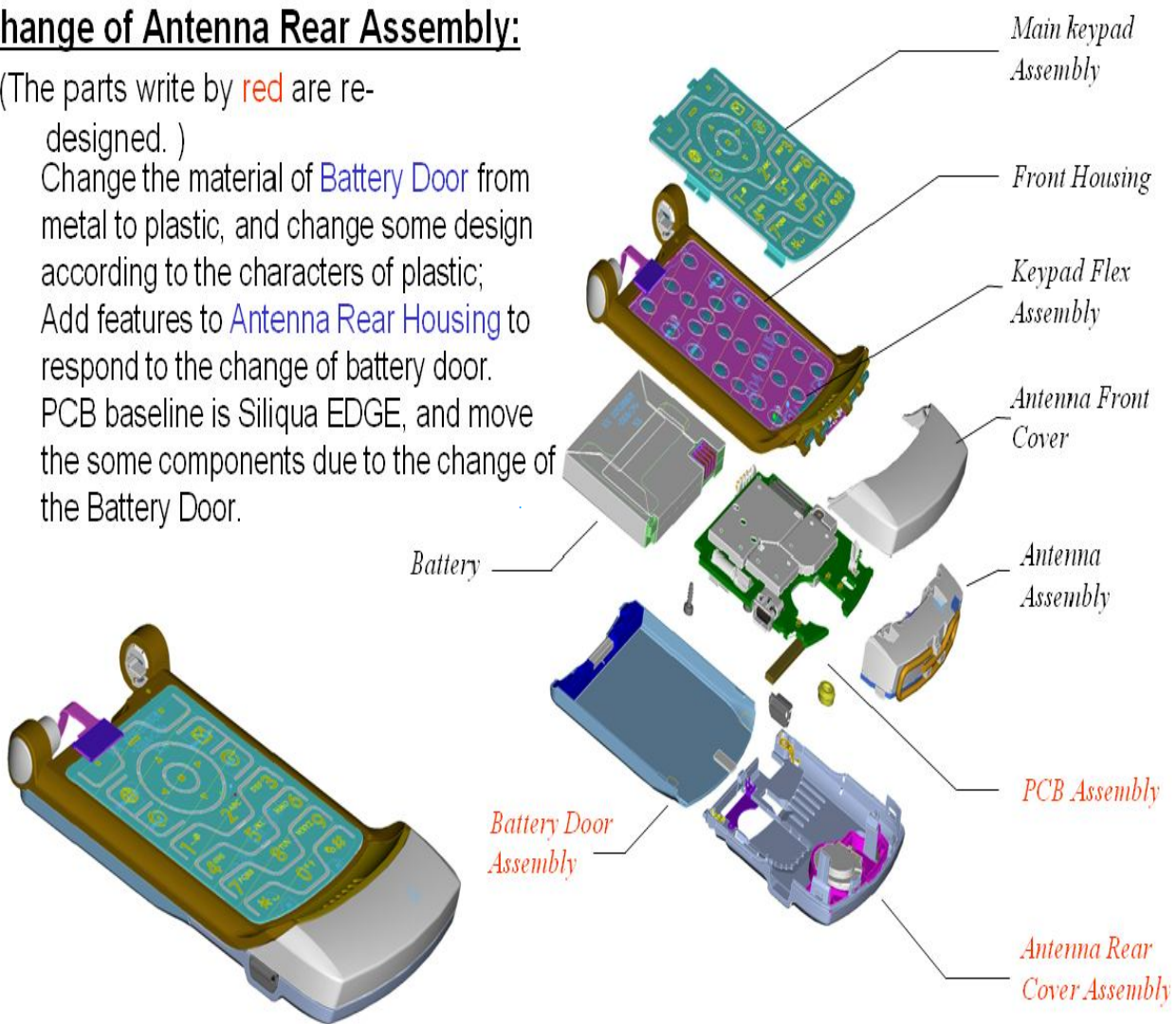
*Assembly Status*



## Change of Antenna Rear Assembly:

(The parts write by **red** are re-designed. )

- Change the material of **Battery Door** from metal to plastic, and change some design according to the characters of plastic;
- Add features to **Antenna Rear Housing** to respond to the change of battery door.
- PCB baseline is Siliqua EDGE, and move the some components due to the change of the Battery Door.



Finished

### **Level Parts List**

V3\_05 Parts List:

[http://md-service.corp.mot.com/internalUsers/SEO\\_ONE\\_VIEW.aspx?id=407&pName=V3\\_05](http://md-service.corp.mot.com/internalUsers/SEO_ONE_VIEW.aspx?id=407&pName=V3_05)

V3\_06 Parts List:

[http://md-service.corp.mot.com/internalUsers/SEO\\_ONE\\_VIEW.aspx?id=482&pName=V3\\_06](http://md-service.corp.mot.com/internalUsers/SEO_ONE_VIEW.aspx?id=482&pName=V3_06)

Note: DO NOT assume that parts from V3\_06 are backward compatible with V3\_05 or vice versa. There are some parts which can be compatible, but it refer to appropriate product's parts list.

**Electrical**

# Comparison with RAZR05

Item \ Project	RAZR06	RAZR05	Comments
	EDGE		
Memory	Sibley 32MB FLASH 8MB PSRAM	TYAX 32B FLASH 8MB PSRAM	•Only <5M user space available. •FDI7.0
RF (EDGE)	RF6029/RF3178 Available	RF6027/RF3178 NO	Support EDGE
Bluetooth	BROADCOM BCM2035B3	BROADCOM BCM2035B3	No Change
Flip	ATI W2240 LM27951	ATI W2250 LM2796	Cost saving
Camera	VGA, OV7670	VGA, MICRON SOC366	Cost saving
T-Flash	Not Available	Not Available	

# Razr 06 vs. Baseline

	Razr06		
	Baseline(Razr05)	Baseline(Silqua)	New Design
<b>EE</b>			
Main board		X	
Flip			
LCD			New Design
P-flex			New Design
CLI	X		
ATI			W2240
Back light			LM27951
Camera			VGA, Socket type, OV7670
Keypad flex	X		
Processor			LTE2, ROM4
BT	X, Class II, BCM2035B3		
Memory			Sibley, 8/32
Memory card	X		No card
RF		X	RF6029/RF3178
Antenna	X		
<b>ME</b>			
Flip			
LCD bezel			New Design
Stack up			New Design
Flip inner			New Design (Close side holes)
Rear Housing			Change internal structure
Battery dooor			Plastic
<b>CMF</b>			
Color	X, Black/Silver		
Paint			New top coat to support pad print on BD

Solution

NA

Field Service Action

**Service Inventory**



V3\_06 should be setup as separate product.

Call Center Action

NA

Service Entry Code

Global Service Codes

Complaint Code:

Problem Found Code:

Reference Designator:

Repair Code:

---

If applicable, note this bulletin number on warranty claim forms and make necessary changes to service manuals.2007-230

**© Copyright 2007 Motorola Inc. All Rights Reserved.**

---