



**MOTOROLA**

Level 1 and 2 Service Manual

# A835

## Wireless Telephone



A835  
GSM 900/1800/1900 and WCDMA 2100 MHz  
Motorola Confidential Proprietary



---

<b>Introduction</b>	<b>5</b>
Product Identification	5
Product Names	5
Product Changes	5
Computer Program Copyrights	5
About This Service Manual	6
Warranty Service Policy	7
Parts Replacement	7
<b>Specifications</b>	<b>8</b>
<b>Product Overview</b>	<b>10</b>
A835 Companion Devices: Video Camera and Location Solutions	10
<b>General Operation</b>	<b>12</b>
Controls, Indicators, and Input/Output (I/O) Connectors	12
User Interface Menu Structure	14
Alert Settings	15
Battery Function	15
Operation	15
<b>Tools and Test Equipment</b>	<b>17</b>
<b>Disassembly</b>	<b>18</b>
Removing and Replacing the Battery Door	18
Removing and Replacing the Battery	18
Removing and Replacing the Rear Housing	20
Removing and Replacing the Endo assembly	23
Removing and Replacing the Front and rear Endo housings	25
Removing and Replacing the Display Assembly	28
Removing and Replacing the Keypad	30
Removing and Replacing the Camera	31
Removing and Replacing the Real-Time Clock (RTC) Battery	32
Removing and Replacing the Microphone	33
<b>UMTS Subscriber Identity Module (USIM) Identification Label</b>	<b>34</b>
USIM	34
Identification	34
<b>Troubleshooting</b>	<b>36</b>
Troubleshooting Chart	36
Manual Test Mode	38
Manual Test Mode Commands	38
Manual Test Mode Response Codes	40
Level 2 Troubleshooting Procedures	41
Programming: Software Upgrade and Flexing	41
<b>Part Number Charts</b>	<b>42</b>
Related Publications	42
Exploded View Parts List	42
Exploded View Diagrams	43
Model Dependant Housing Part Numbers	45
Accessories	45



## Introduction

Motorola® Inc. maintains a worldwide organization that is dedicated to provide responsive, full-service customer support. Motorola products are serviced by an international network of company-operated product care centers as well as authorized independent service firms.

Available on a contract basis, Motorola Inc. offers comprehensive maintenance and installation programs which enable customers to meet requirements for reliable, continuous communications.

To learn more about the wide range of Motorola service programs, contact your local Motorola products representative or the nearest Customer Service Manager.

## Product Identification

Motorola products are identified by the model number on the housing. Use the entire model number when inquiring about the product. Numbers are also assigned to chassis and kits. Use these numbers when requesting information or ordering replacement parts.

## Product Names

Product names are listed on the front cover. Product names are subject to change without notice. Some product names, as well as some frequency bands, are available only in certain markets.

## Product Changes

When electrical, mechanical, or production changes are incorporated into Motorola products, a revision letter is assigned to the chassis or kit affected, for example: -A, -B, or -C, and so on.

The chassis or kit number, complete with revision number, is imprinted during production. The revision letter is an integral part of the chassis or kit number and is also listed on schematic diagrams and printed-circuit board layouts.

## Computer Program Copyrights

The Motorola products described in this manual may include Motorola computer programs stored in semiconductor memories or other media that are copyrighted with all rights reserved worldwide to Motorola. Laws in the United States and other countries preserve for Motorola, Inc. certain exclusive rights to the copyrighted computer programs, including the exclusive right to copy, reproduce, modify, decompile, disassemble, and reverse-engineer the Motorola computer programs in any manner or form without Motorola's prior written consent. Furthermore, the purchase of Motorola products shall not be deemed to grant either directly or by implication, estoppel, or otherwise, any license or rights under the copyrights, patents, or patent applications of Motorola, except for a nonexclusive license to use the Motorola product and the Motorola computer programs with the Motorola product.

---

## About This Service Manual

Using this service manual and the suggestions contained in it assures proper installation, operation, and maintenance of A835 telephones. Refer questions about this manual to the nearest Customer Service Manager.

### Audience

This document aids service personnel in testing and repairing A835 telephones. Service personnel should be familiar with electronic assembly, testing, and troubleshooting methods, and with the operation and use of associated test equipment.

Use of this document assures proper installation, operation, and maintenance of Motorola products and equipment. It contains all service information required for the equipment described and is current as of the printing date.

### Scope

This document provides basic information, procedures, and processes for repairing the phones at Level 1 and 2 service centers including:

- Unit swap out
- Repairing of mechanical faults
- Basic modular troubleshooting
- Testing and verification of unit functionality
- Initiate warranty claims and send faulty modules to Level 3 or 4 repair centers.

### Conventions

Special characters and typefaces, listed and described below, are used in this publication to emphasize certain types of information.



*Note: Emphasizes additional information pertinent to the subject matter.*



*Caution: Emphasizes information about actions which may result in equipment damage.*



*Warning: Emphasizes information about actions which may result in personal injury.*

Information from a screen is shown in text as similar as possible to what appears in the display. For example, **ALERTS**.

Information that you need to type is printed in **boldface type**

## Warranty Service Policy

The product is sold with the standard 12-month warranty terms and conditions. Accidental damage, misuse, and extended warranties offered by retailers are not supported under warranty. Non warranty repairs are available at agreed fixed repair prices.

### Out-of-Box Failure Policy

The standard out of box failure criteria applies. Customer phones that fail very early on after the date of sale, are to be returned to Manufacturing for root cause analysis, to guard against epidemic criteria. Manufacturing to bear the costs of early life failure.

### Product Support

Customer's original phones will be repaired but not refurbished as standard. Appointed Motorola Service Hubs will perform warranty and non-warranty field service for level 2 (assemblies) and level 3 (limited PCB component). The Motorola High Technology Centers will perform level 4 (full component) repairs.

### Customer Support

Customer support is available through dedicated Call Centers and in-country help desks. Product Service training should be arranged through the local Motorola Support Center.

## Parts Replacement

When ordering replacement parts or equipment, include the Motorola part number and description used in the service manual or supplement.

When the Motorola part number of a component is not known, use the product model number or other related major assembly along with a description of the related major assembly and of the component in question.

To order parts online, visit:

**<https://servicelink3.motorola.com>.**

(contact the EMEA Service Parts Group for the password required)

You can contact the EMEA Service Parts Group at:

**+44 131 479 1274.**

# Specifications

**Table 1. Specifications**

General Function	Specification
Frequency Range EGSM	<b>TX:</b> 876 - 915 MHz Frequency (MHz) = $890 + (0.2 \times n)$ where: $0 \leq n \leq 124$ Frequency (MHz) = $890 + (0.2 \times (n - 1024))$ where: $955 \leq n \leq 1023$ <b>RX:</b> 921 - 960 MHz Frequency (MHz) = $935 + (0.2 \times n)$ where: $0 \leq n \leq 124$ Frequency (MHz) = $935 + (0.2 \times (n - 1024))$ where: $955 \leq n \leq 1023$
Frequency Range DCS	<b>TX:</b> 1710 to 1785 MHz Frequency (MHz) = $1710 + (0.2 \times (n - 511))$ where: $512 \leq n \leq 885$ <b>RX:</b> 1805.2 to 1879.8 MHz Frequency (MHz) = $1805 + (0.2 \times (n - 511))$ where: $512 \leq n \leq 885$
Frequency Range PCS	<b>TX:</b> 1850 to 1910 MHz Frequency (MHz) = $1850 + (0.2 \times (n - 511))$ where: $512 \leq n \leq 810$ <b>RX:</b> 1930 to 1990 MHz Frequency (MHz) = $1930 + (0.2 \times (n - 511))$ where: $512 \leq n \leq 810$
Frequency Range UMTS	<b>TX:</b> 1920 to 1980 MHz Frequency (MHz) = $\text{UARFCN}^1 \div 5$ , where: $9612 \leq \text{UARFCN}^1 \leq 9888$ UARFCN <sup>1</sup> in increments of 25  <b>RX:</b> 2110 to 2170 MHz Frequency (MHz) = $\text{UARFCN}^1 \div 5$ , where: $10562 \leq \text{UARFCN}^1 \leq 10838$ UARFCN <sup>1</sup> in increments of 25
Channel Spacing	200 kHz (GSM, DCS, PCS), 5MHz UMTS
Channels	174 EGSM, 374 DCS, 274 PCS carriers with 8 ch. Per carrier, 11 UMTS
Duplex Spacing	45 MHz GSM, 95 MHz DCS, 80 MHz PCS, 190 MHz UMTS
Modulation	GMSK AT BT = 0.3 (GSM, DCS, PCS), QPSK (UMTS)
Transmitter Phase Accuracy	5 degrees RMS, 20 degrees peak
Frequency Error	$\pm 0.1$ ppm
Input/Output Impedance	50 ohms (nominal)
Nominal Operating Voltage	3.6 Vdc $\pm 10\%$ (battery) +4.4 Vdc $\pm 10\%$ (external connector)
Dimensions (Volume)	135 x 53 x 24.2 (mm), 5.3 x 2.1 x 0.95 (in)
Volume	138 cc
Weight	157 g, 5.54 oz
Display	TFT active full-color display (4096 colors) 176 x 220 pixel EL Backlighting 5 row x 15 character: SMS & Phonebook
Battery Life (800mAh) <sup>2</sup>	<b>GSM:</b> Up to 160 min (Talk Time), up to 200 hours (Standby) <b>WCDMA:</b> Up to 100 min (Talk Time), up to 185 hours (Standby)
Nominal Temperature Range	-20° C to +50° C

<sup>1</sup>UTRA Absolute Radio Frequency Channel Number (UARFCN)

<sup>2</sup>All talk time and standby times are approximate and depend on network configuration, signal strength, and features selected



**Table 2. GSM System**

General Function	Specification
Speech Coding Type	Regular Pulse excitation / linear predictive coding with long term prediction (RPE LPC with LTP)
Bit Rate	13.0 kbps
RF Power Output	32 dBm nominal GSM, 30 dBm nominal DCS / PCS
Receive Sensitivity	-107 dBm GSM, -105 dBm DCS / PCS
RX Bit Error Rate	< 2%

**Table 3. UMTS System**

General Function	Specification
Speech Coding Type	Adaptive Multirate (AMR)
RF Power Output	30 dBm
Error Vector Magnitude	< 15%
PN9 Bit Error Rate (VER)	0.1% @ 12.2k, 0.1% @ 64k, 0.1% @ 384k
ACLR	-33 dBm @ $\pm 5$ MHz, -43 dBm @ $\pm 10$ MHz

---

## Product Overview

The A835 is a 3G device. It will deliver on the “promise” of 3G by providing high speed network access and rich multimedia content all in a superior voice-centric unit. Two companion devices, a video camera and a combination video camera with Assisted GPS provide additional value by offering unique business and entertainment solutions.

The mechanical architecture features a 176 x 220 pixel, 0.198mm pitch TFT active color display, a built-in speaker phone, and a removable Li-Polymer battery. The architecture enables full postponement of the front housing and battery door cover by allowing the transceiver brick assembly, keypad, display, microphone, and earpiece speaker to be fully assembled and retained within the rear housing chassis. Front covers may then be snapped in at distribution based on specific orders. Front housing branding is accomplished through thermal transfer decals.

As a 3G product, the A835 complies with all key specifications as defined by the 3GPP. Key product features are:

- UMTS: WCDMA 2100, GSM 900/1800 and 1900-MHz Tri-band technology,
- GPRS High speed packet data (64kbps UL, 384 kbps DL)
- 176 x 220 TFT Active Color, 4096 colors
- 16-MB Flash Memory, SD-MMC memory card
- Integrated Bluetooth
- MP3 Player
- Enhanced Multimedia Capability (Audio/Video, Games, MMS)
- Unique 4-way Navigation Key
- New graphical user interface
- Enhanced internet browser (XHTML)
- Full Personal Information Manager (PIM) with SyncML Synchronization (OTA, Desktop)
- Integrated Video/Still Camera and GPS
- Voice Recognition Driven Dialing and Menu Shortcuts
- Voice Note Voice Recorder
- Polyphonic Speakerphone
- Programmable (J2ME)
- iTAP™ Predictive Text Entry
- Integrated Stereo Headset Jack

*Note: The listed features may be Network, subscription, or service provider dependent. Not available in all areas.*

## A835 Companion Devices: Video Camera and Location Solutions

Video Camera Features:

- JPEG Image Capture @ VGA Resolution
- MPEG4 Video Capture @ QCIF Resolution
- Retractable Lens w/180° Range of Motion (take pictures and video of others or yourself)
- Streaming Video
- Tightly Coupled, Ergonomic Design
- Initial User Applications:
  - Sending captured Video Clips and Pictures through MMS, Email, or Internet channels
  - Simultaneous Voice/Data – Take a picture or video clip and send while

you're on the phone

- Future Capabilities:
  - Video Conferencing (2-Way Video Telephony)

Location (AGPS) Applications:

- Get to specific location, with appropriate choices of destinations and routes and guidance to destination
- Identify local places of interest for hotels, taxi companies, restaurants, theatres, sightseeing, and shopping
- Receive information through alerts or display on map ahead of traffic congestion.
- Receive roadside assistance, with rescue service network and location information from the cellular network used to complement any information the pedestrian/driver is able to separately give.
- E911 Services: When roaming on a 2-2.5G GSM E-OTD-enabled network the mobile phone will respond to a request for location when making an emergency call (Please refer to future AGPS MRS for further details).
- Push, Tracking & B2B Applications such as corporate tracking, routing, fleet management, and Buddy tracking (alert)

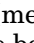
# General Operation

## Controls, Indicators, and Input/Output (I/O) Connectors

The A835 telephone's controls are located on the front of the phone, and on the keyboard as shown. Indicators, in the form of icons, are displayed on the LCD (see "Liquid Crystal Display (LCD)" on page 12).

### Liquid Crystal Display (LCD)

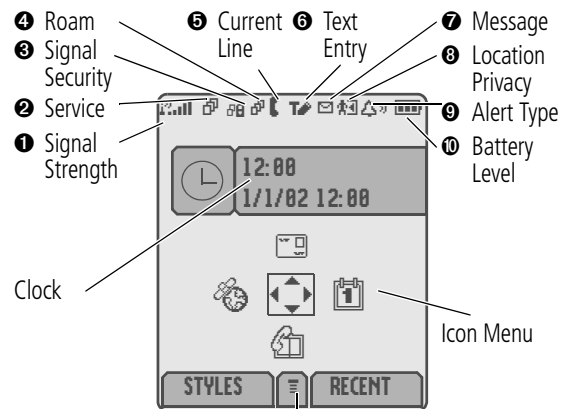
The top section of the display shows phone status indicators. The following illustration shows some of the common indicators that you may see at the top of the display when using the phone.


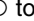
Messages, phone numbers, and menu options appear in the middle of the display. Text labels at the bottom corners of the display show the current soft key functions. A  (menu) indicator in the bottom center of the display indicates that you can open the main menu or a feature sub-menu to see more options.

Some of the phone functions described in this manual must be performed from the idle display. The term *idle display* refers to the standard display that you see when your phone is on and ready to use, when you are *not* on a call or using the menu system.



*Whether a phone displays all indicators depends on the programming and services to which the user subscribes.*



When the **Menu Indicator** () displays, you can press  to open a menu.

**❶ Signal Strength Indicator** Shows the strength of the phone's connection with the network.

Strong No signal

You cannot make or answer calls when the “no signal” indicator is displayed.



**❷ Service Indicator** Shows when a GPRS connection is available. Your service provider may indicate that a GPRS packet data connection is active. This type of connection may be used by the service provider to allow faster data transfer speeds. The GPRS indicator does not mean that you are on a call; it indicates only that you are registered on the network through a GPRS connection.

**❸ Signal Security Indicator** Shows when you have a secure connection for packet data transfers, embedded application connections, or circuit switch data calls.



**❹ Roam Indicator** Shows when the phone uses the home network (📶) or another network (🌐). When the phone leaves the home network area, it *roams* or seeks another network.

**❺ Current Line Indicator** Shows when Voice Privacy is on, a call is in progress, or Call Forwarding is on. This icon also indicates which line is active (if a call is on hold), and whether Caps Lock, Numeric Entry, or Symbol Entry is switched on (when entering text).

**❻ Text Entry Indicator** Indicates your Text Entry Method whenever you are in a text editor (Tap, iTap, etc.).



**❼ Message Indicator** Indicates when a new voice or text message is waiting.

**❽ Location Privacy Indicator** Shows when Location Privacy is on or off, or when there is an Active Busy line.

**❾ Alert Type Indicator** Shows the currently selected alert profile. The default alert setting is a ringer.

🔔 = loud ring

🔔 = soft ring

🔔 = vibrate

🔔 = ring and vibrate

🔔 = silent

**❿ Battery Level Indicator** Shows the amount of charge left in the battery. The more bars visible, the greater the charge.

High Empty

## User Interface Menu Structure

### Menu Navigation

A835 telephones are equipped with a simplified icon and list-based user interface.

#### Main Menu

- **Media Center**
  - Audio
  - Pictures
  - Video
- **Games & Apps**
- **Ring Styles**
- **Shortcuts**
- **Office Tools**
  - Datebook
  - Voice Notes
  - Calculator
- **Settings**
  - (see next column)
- **Web Access**
  - Browser
  - Web Shortcuts
  - Stored Pages
  - History
  - Goto URL
  - Browser Setup
- **Services**
  - SIM Applications
  - Fixed Dial
  - Service Dial
  - Quick Dial



#### Extras


- **Web Sessions**
- **Phonebook**
- **Messages**
- **Recent Calls**
- **Smart Menu**



#### Note:


This is the standard phone menu layout. You or your service provider may have changed the menu layout or changed some feature names. Not all features may be available for all users.


#### Shortcuts

Change display zoom:  
Press , then press and hold 

Lock/unlock keypad:  
Press  

Display my phone number:  
Press  

Go to dialed calls list:  
Press 

Exit menu system:  
Press 

#### Settings

- **Personalize**
  - Main Menu
  - Home Keys
  - Power Up
  - Greeting
  - Banner
  - Banner Graphic
  - Wallpaper
  - Screen Saver
  - Quick Dial
- **Call Forward**
  - Voice Calls
  - Fax Calls
  - Data Calls
  - Cancel All
  - Forward Status
- **Connection**
  - IrDA Link
  - Active Call
  - Bluetooth Link
  - Sync
  - Incoming Call
- **Phone Status**
  - My Tel. Number
  - Active Line
  - Battery Meter
  - User Account
  - Storage Devices
  - Location
  - Other Information
- **Security**
  - Phone Lock
  - Lock Keypad
  - Lock Application
  - Fixed Dialing
  - Call Barring
  - SIM PIN
  - Universal PIN
  - WIM PINs
  - New Passwords
- **Other Settings**
  - Initial Setup
  - Time and Date
  - 1-Touch Dial
  - Display Timeout
  - Backlight
  - Zoom
  - Scroll
  - Animation
  - Language
  - Battery Save
  - DTMF
  - Master Reset
  - Master Clear
  - In-Call Setup
    - In-Call Timer
    - Call Guard
    - Call Cost Setup
    - My Caller ID
    - Talk and Fax
    - Call Waiting
    - Answer Options
  - Network
    - New Network
    - Network Setup
    - Available Networks
    - My Network List
    - Service Tone
    - Call Drop Tone
  - Car Settings
    - Auto Answer
    - Auto Handsfree
    - Power Off Delay
    - Charger Time
  - Headset
    - Auto Answer
    - Ringer Options
  - Java Tools

---

## Alert Settings

Motorola A835 phones incorporate the VibraCall® discreet vibrating alert that helps avoid disturbing others when a ringing phone is unacceptable.

Alerts can be set to ring only, vibrate only, vibrate then ring, or no ring or vibrate.

Additionally, the profiling feature allows users to identify incoming calls by a specific ringer tone.

## Battery Function

### Battery Charge Indicator

The telephone displays a battery charge indicator icon in the idle screen to indicate the battery charge level. The gauge shows four levels: 100%, 66%, 33%, and Low Battery.

### Battery Removal

Removing the battery causes the phone to immediately shut down and any pending work (partially entered phone book entries or outgoing messages, for example) is lost.



*All batteries can cause property damage and / or bodily injury such as burns if a conductive material such as jewelry, keys, or beaded chains touch exposed terminals. The conductive material may complete an electrical circuit (short circuit) and become quite hot. Exercise care in handling any charged battery, particularly when placing it inside a pocket, purse, or other container with metal objects.*



*If the battery is removed while receiving a message, the message will be lost.*



*To ensure proper memory retention, turn the phone OFF before removing the battery. Immediately replace the old battery with a fresh battery.*

## Operation

For detailed operating instructions, refer to the appropriate user guide listed in the Related Publications section.





## Tools and Test Equipment

Table 4 list the tools and test equipment used on A835 telephones. Use either the listed items or equivalents.

**Table 4. General Test Equipment and Tools**

Motorola Part Number <sup>1</sup>	Description	Application
See Table 11	Charger	Used to charge battery and to power phone
0180386A82	Antistatic Mat Kit (includes 66-80387A95 antistatic mat, 66-80334B36 ground cord, and 42-80385A59 wrist band)	Protects phone from damage caused by electrostatic discharge (ESD)
0-00-00-30005 <sup>3</sup>	Disassembly tool, black plastic with flat and pointed ends	Used to assemble/disassemble phone
6680388B01	Tweezers, plastic	Used to assemble/disassemble phone
RSX4043-A	Torque Driver	Used to remove and replace screws
—	Torque Driver Bit T-6 Plus, Apex 440-6IP Torx Plus or equivalent	Used with torque driver
HP34401A <sup>2</sup>	Digital Multimeter	Used to measure battery voltage

1. To order in North America, contact Motorola Aftermarket and Accessories Division (AAD) by phone (800) 422-4210 or fax (800) 622-6210; Internationally, you can reach AAD by phone (847) 538-8023 or fax (847) 576-3023.

2. Not available from Motorola. To order, contact Hewlett Packard at (800) 452-4844.

3. Not available from Motorola. To order, contact:

AMS Software & Elektronik GmbH  
 c/o Holger Grube  
 Lise-Meitner-Straße 9  
 D-24941 Flensburg Tel.: +49-461-90398-0  
 Fax: +49-461-90398-50

## Disassembly

This section describes how to disassemble a A835 telephone. Refer to Table 4 for a list of tools and equipment used.



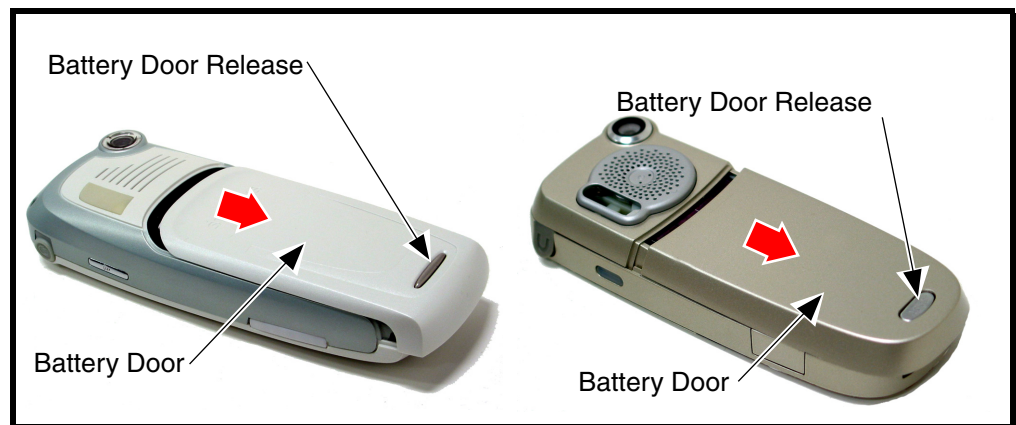
*Many of the integrated devices used in this phone are vulnerable to damage from electrostatic discharge (ESD). Ensure you use adequate static protection when handling, shipping, and servicing the internal components.*



*Avoid stressing the plastic in any way to avoid damage to either the plastic or internal components.*

### Removing and Replacing the Battery Door

1. Ensure the phone is turned off.
2. Press the battery door release button and slide the battery door toward the bottom end of the phone.
3. Lift the battery door up and away from the phone.



031663

**Figure 1. Removing and Replacing the Battery Door**

4. To replace, align the battery door the phone.
5. Lower the battery door onto the phone.
6. Slide the battery door toward the top of the phone to lock the battery door release

### Removing and Replacing the Battery



*All batteries can cause property damage and / or bodily injury such as burns if a conductive material such as jewelry, keys, or beaded chains touch exposed terminals. The conductive material may complete an electrical circuit (short circuit) and become quite hot. Exercise care in handling any charged battery, particularly when placing it inside a pocket, purse, or other container with metal objects.*

We recommend that you store batteries in their protective cases when not in use.

### To remove the battery

1. Ensure the phone is turned off.
2. If the battery door is installed, remove it by pushing down the battery door release latch and lifting the door off the phone.
3. Pinch the top of the battery from the sides and lift it out of the phone, releasing it from the tab at the bottom of the battery compartment (see Figure 2).



031662o, 031725o

Figure 2. Removing and Replacing the Battery

### To replace the battery

1. If necessary, remove the battery from its protective clear plastic case.
2. Insert the battery, printed arrow first, **under the tab** at the bottom of the battery compartment, then press the top of the battery into place.
3. Replace the battery as described in the procedures.



*There is a danger of explosion if the Lithium ion battery is replaced incorrectly. Replace only with the same type of battery or equivalent as recommended by the battery manufacturer. Dispose of used batteries according to the manufacturer's instructions.*

---

## Removing and Replacing the Rear Housing

### To remove the rear housing (Motorola model)

1. Follow the procedures in this section to remove the:
  - Battery door
  - Battery
2. Using the Torx driver and T-6 bit, remove the 2 screws shown in Figure 3. Set the screws aside for reuse.
3. Use the disassembly tool to release the latches along the phone. Lift the rear housing out of the back of the phone as shown in Figure 3.n the sides of the housing to release the boards if necessary.

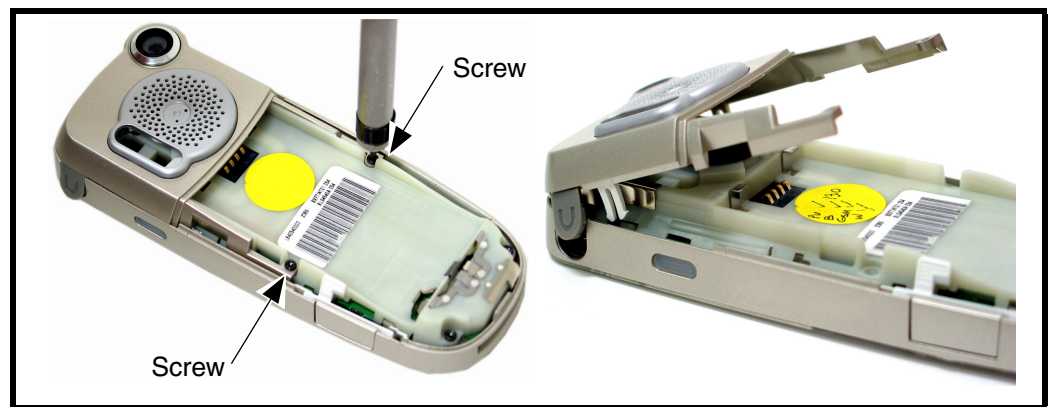


Figure 3. Removing the Rear Housing

### To replace the rear housing

1. Align the display board/transceiver board with the rear housing and set it in place. If necessary, press gently to make sure that it fits all the way in.
2. Insert and tighten the 6 screws to a torque setting of 1.2 in/lbs, using the T-6 Torx driver. Do not overtighten.
3. Follow the procedures to replace the:
  - Battery
  - Battery door

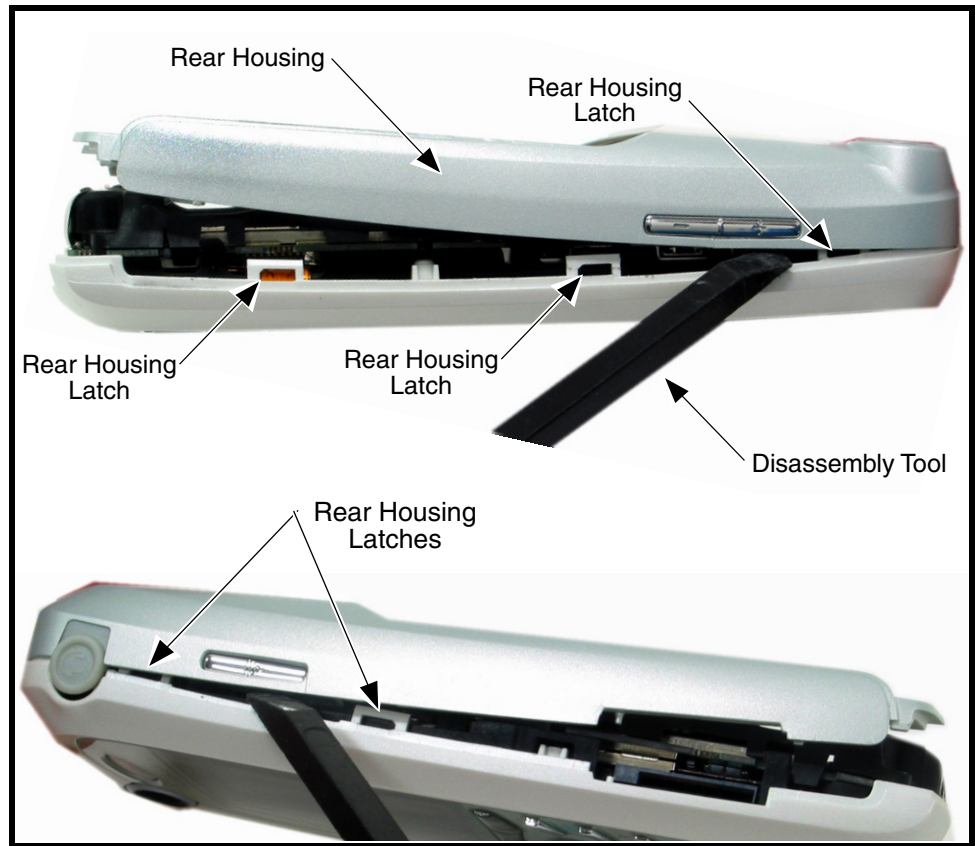
**To remove the rear housing (Siemens model)**

1. Follow the procedures in this section to remove the:
  - Battery door
  - Battery
2. Torx driver and T-6 bit, remove the 4 screws as shown in Figure 4. Set the screws aside for reuse.

**Figure 4. Rear Housing Screws Removal**

3. Using the disassembly tool, release the 3 latches on each side of the phone as shown in Figure 5.

- Carefully lift the rear housing off of the phone.



**Figure 5. Rear Housing Removal (Siemens model)**

### **To replace the rear housing**

- Align the rear housing with the phone (front housing).
- Press the front and rear housings together until the 3 latches on each side snap into place.
- Insert and tighten the 4 screws to a torque setting of 1.2 in/lbs, using the T-6 Torx driver. Do not overtighten.
- Follow the procedures to replace the
  - battery
  - battery door

---

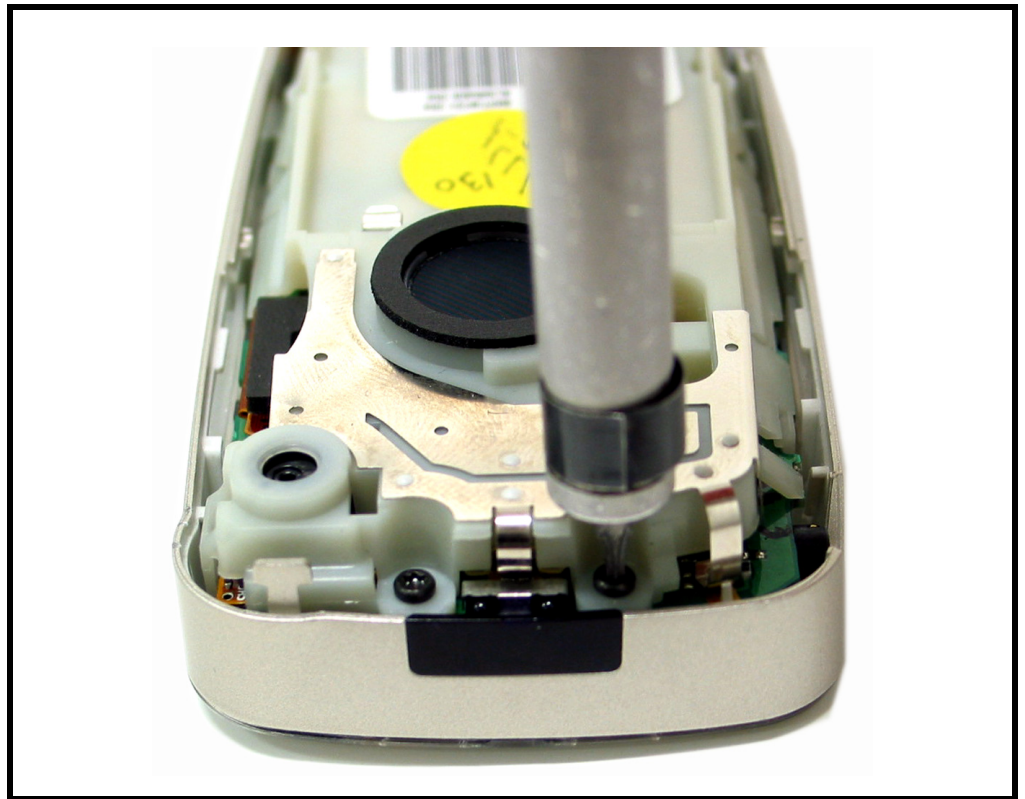
## Removing and Replacing the Endo assembly



*This phone contains static-sensitive devices. Use anti-static handling procedures to prevent electrostatic discharge (ESD) and component damage.*

### To remove the Endo assembly

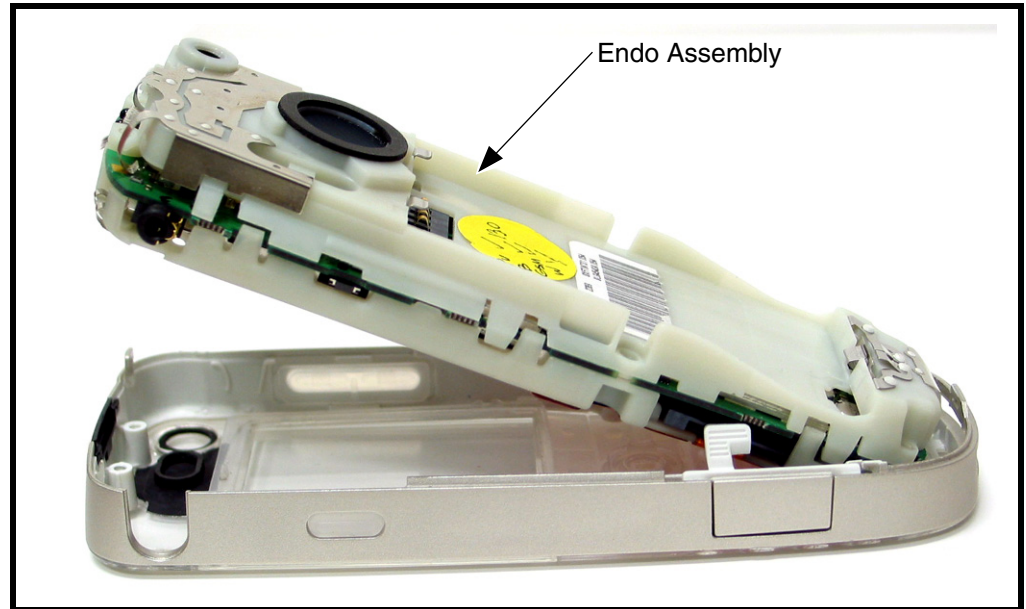
1. Ensure the phone is off.
2. Follow the procedures to remove the
  - battery door
  - battery
  - rear housing
3. Remove 4 screws 2 at the top and 2 at the bottom of the endo assembly (see Figure 8).



**Figure 6. Removing the Endo Assembly Screws**

4. Carefully insert the disassembly tool into the square opening opposite the antenna as shown in Figure 7. Avoid damaging the outer edge of the opening.
5. Push in and up to release the outer snap and the center snap.
6. Slide the disassembly tool along the inside edge of the phone to release the 3 snaps along the side as shown below.

7. Carefully slide the front housing toward the antenna to release the bottom corner tab at the bottom edge of the phone.
8. Carefully release the remaining snaps on the opposite side of the housing.



**Figure 7. Removing the Endo Assembly**

#### **To replace the Endo Assembly**

1. Insert the tabs at bottom end of the front housing into the rear housing.
2. Press the side snaps into place and, then, carefully press the top snap into place.



## Removing and Replacing the Front and rear Endo housings

### To remove the Front and Rear Endo Housings

1. Remove the Battery door, battery, Rear housing, and endo assembly as described in the procedures.
2. Carefully use the flat end of the disassembly tool to pry the camera flex connector out of its socket (see Figure 8).
3. Use the disassembly tool Release the endo assembly clips on both sides of the endo assembly
4. Carefully separate the two halves of the endo assembly.

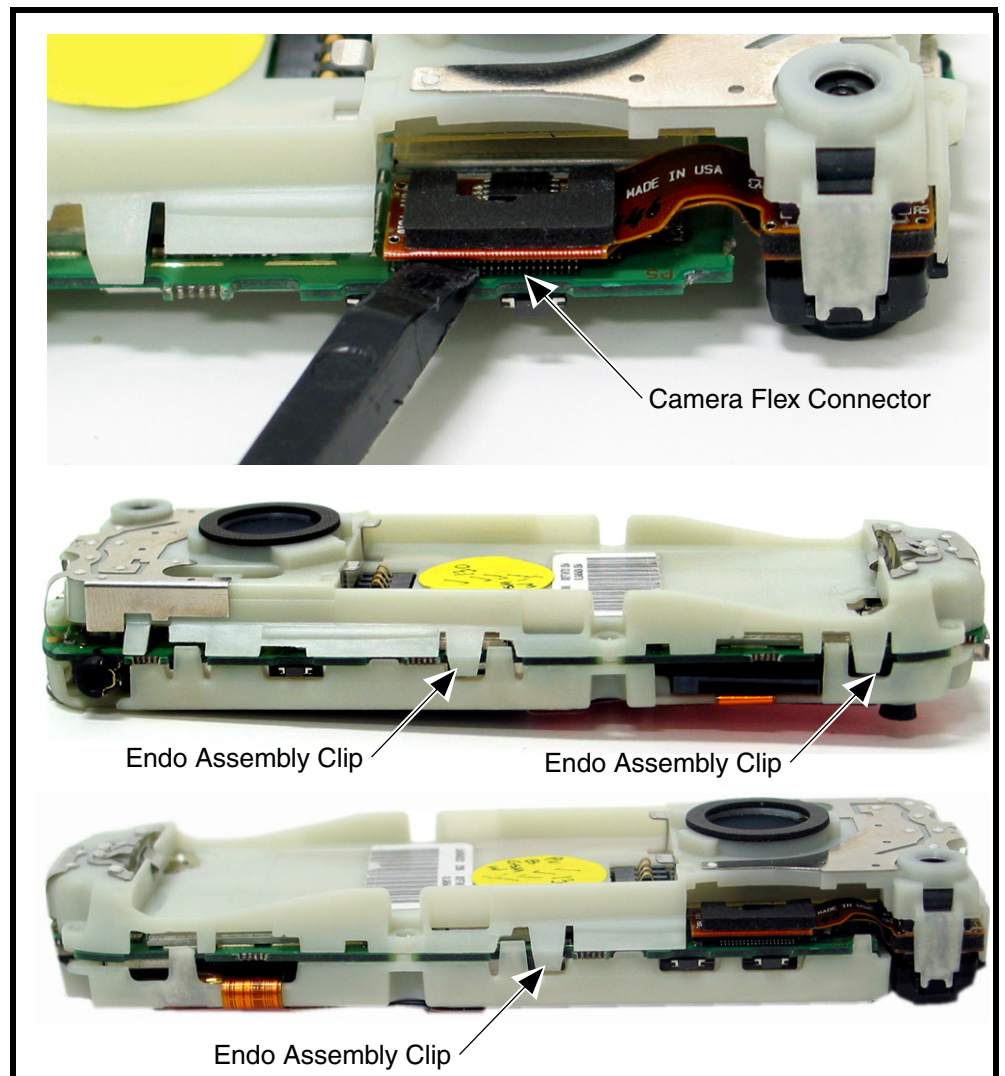


Figure 8. Removing the front and rear Endo housing

- Using the flat end of the disassembly tool, first disconnect the display assembly flex connector and then the keypad flex connector (see Figure 9).

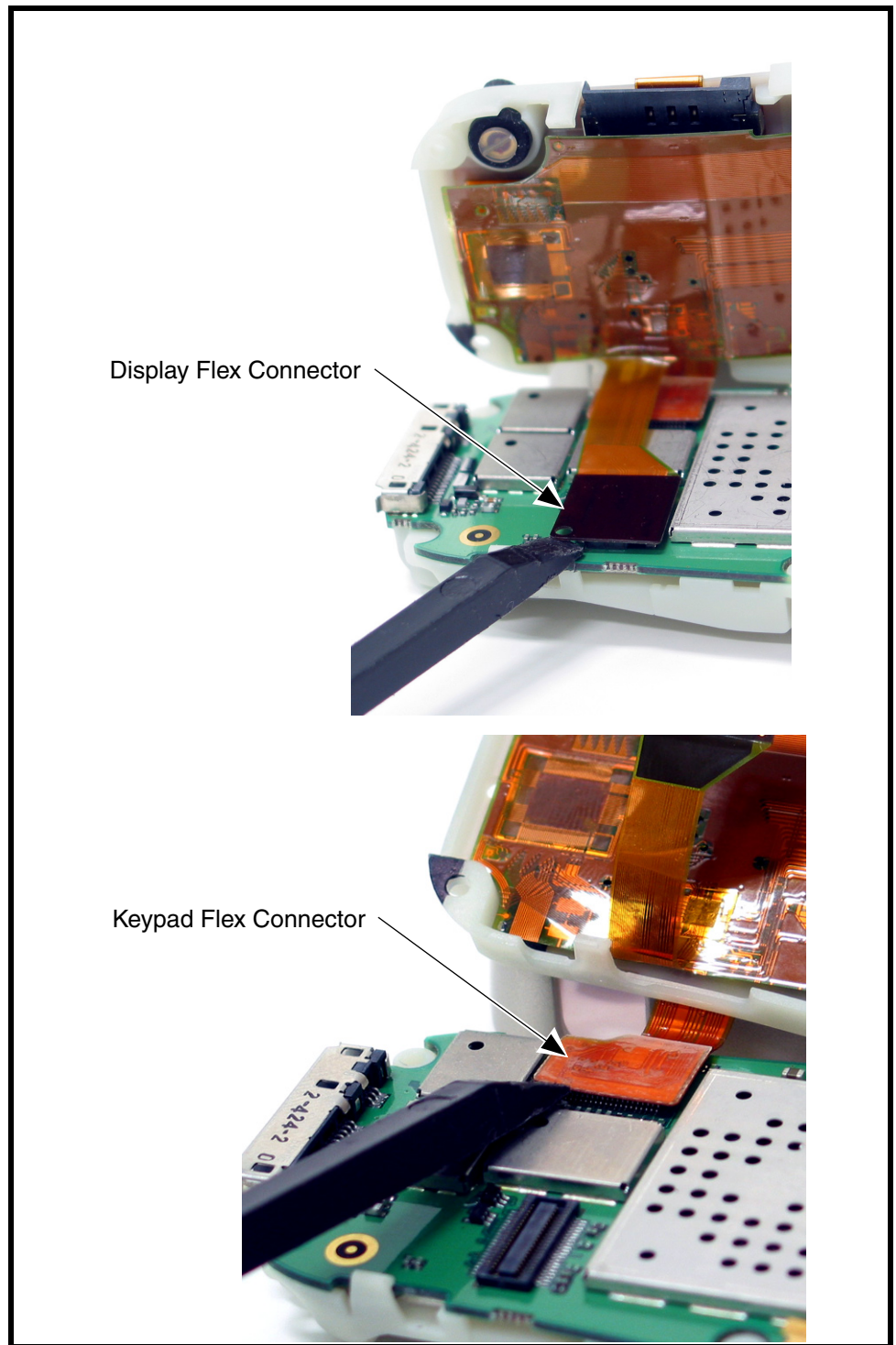


Figure 9. Removing the Display flex connector and Keypad flex connector

031674o

6. Completely separate the front and rear endo housings.

### **To Replace the Front and Rear Endo Housings**

7. Align the front and rear endo housings.
8. Insert the keypad flex connector to its socket.
9. Insert the display flex connector into its socket.
10. Carefully press the front and rear housings together until the side clips engage.
11. Replace the front and rear housings, battery, and battery door as described in the procedures.

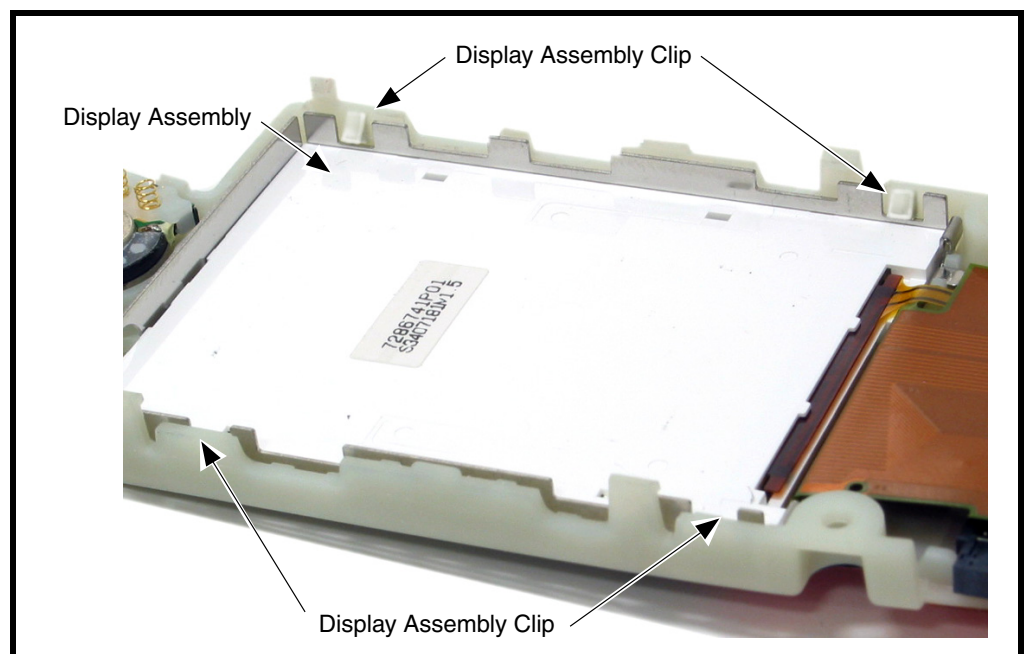
## Removing and Replacing the Display Assembly

### To remove the display assembly

1. Follow the procedures to remove the:
  - Battery
  - Front Housing
  - Rear Housing
  - Front and rear Endo Assembly
2. Peel the softkey connector strip away from the bottom of the display assembly, to disconnect the keyboard flex connector from the display.
3. Release the display assembly clips on each side of the display assembly as shown in Figure 10.



*The flexible printed cable (FPC or flex) connecting the display assembly to the display board is easily damaged. Exercise extreme care when handling.*



**Figure 10. Removing the Display Assembly**

4. Carefully lift the display assembly away from the front endo housing.

### To replace the display assembly

1. Insert the display assembly into its plastic frame.
2. Carefully press the display assembly into position in the front endo housing until the display assembly clips snap into place. Ensure the front end of the display assembly is flush with the front edge of the front endo housing.
3. Follow the procedures to replace the:

- Front and Rear Endo Assembly
- Rear Housing
- Front Housing
- USIM Card
- Battery

---

## Removing and Replacing the Keypad

### To remove the keypad

1. Follow the procedures to remove the:
  - Battery door
  - Battery
  - Endo assembly
2. Use the plastic tweezers to lift the keypad out of the front housing.

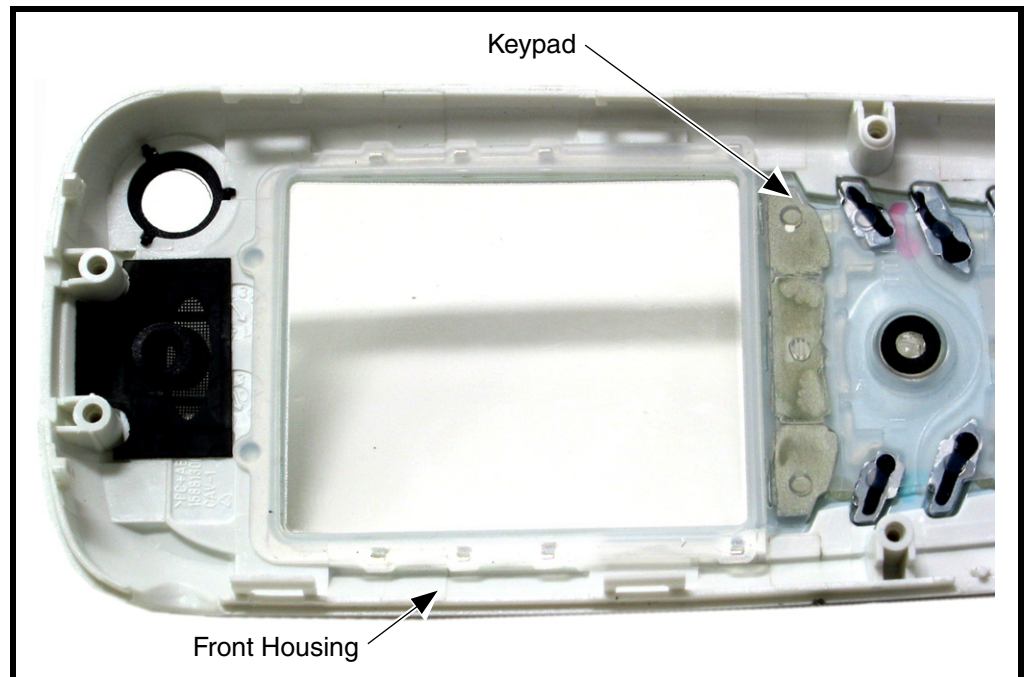


Figure 11. Removing the Keypad

### To replace the keypad

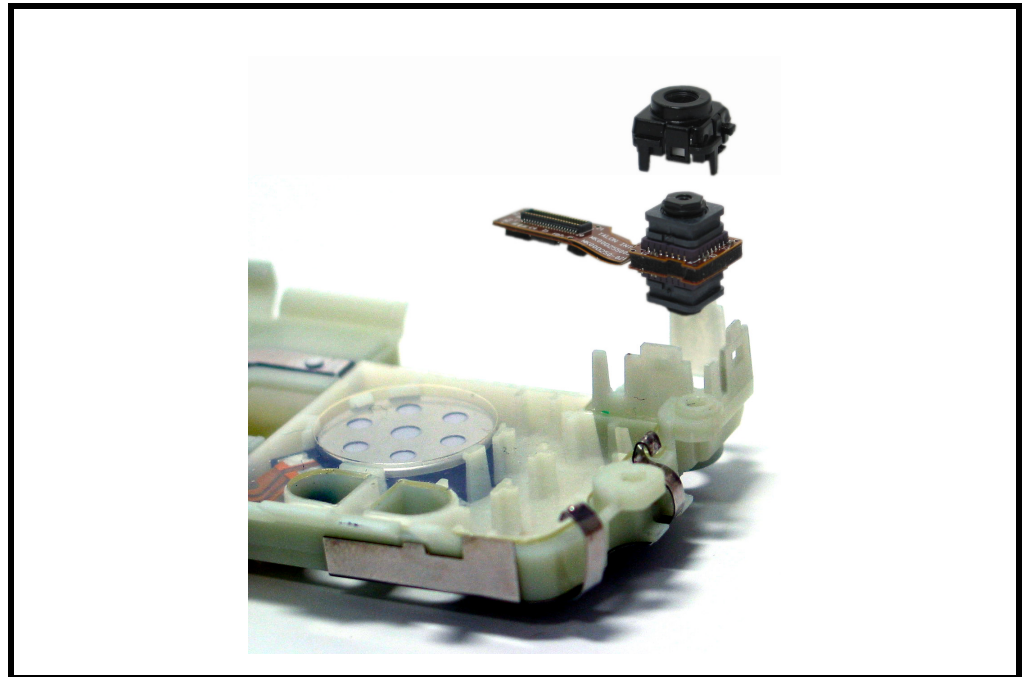
1. Align the keypad to the front housing.
2. To replace, insert the keypad into the front housing. Ensure the keys align with the openings and the keypad is fully seated in the front housing.
3. Follow the procedures to replace the:
  - Endo assembly
  - Battery
  - Battery door

---

## Removing and Replacing the Camera

### To remove the camera

1. Ensure the phone is turned off.
2. Remove the Battery door, battery, Front and rear housings, Endo assembly, and transceiver board as described in the procedures.
- 3.
4. Carefully lift the bottom of the camera away from the phone, sliding it off the phone's antenna at the top.



031667

Figure 12. Replacing the Camera

### To replace the camera

1. If necessary, remove the battery door by pushing down on the battery door release latch and lifting the door off the phone.
2. Slide the camera accessory onto the phone, inserting the phone's antenna into the accessory's antenna socket.
3. Slide the camera latch closed to secure the camera.
4. Replace the Transceiver board, Endo assembly, Front and rear housings, Battery, and Battery door as described in the procedures.

---

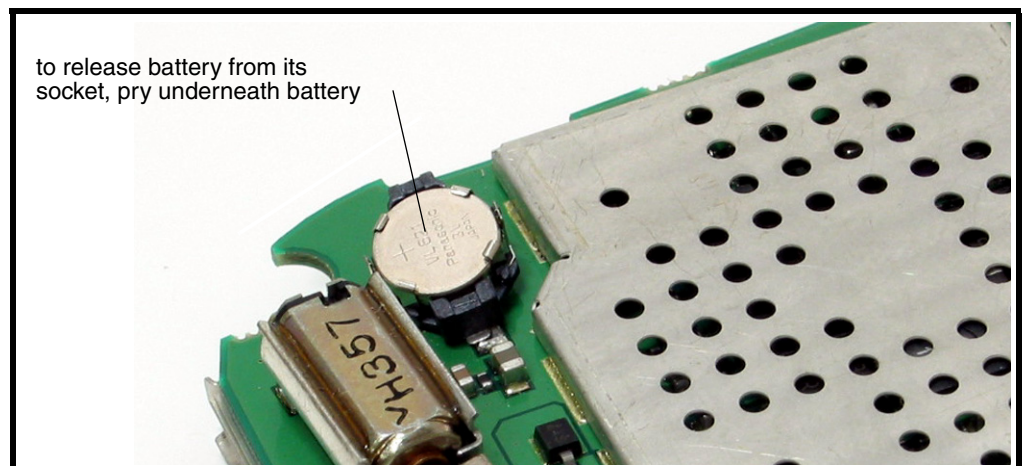
## Removing and Replacing the Real-Time Clock (RTC) Battery



*Use only non-conductive tools, such as the plastic disassembly tool and the plastic tweezer, when removing and replacing the RTC battery.*

### To remove the RTC battery

1. Follow the procedures to remove the:
  - Battery Door
  - Battery
  - Front Housing
  - Endo Assembly
  - Rear Housing
  - Transceiver Board
2. Use the pointed end of the disassembly tool to gently pry the RTC battery from its socket on the back of the transceiver board, as shown in Figure 13.
3. Use the plastic tweezer to remove the battery from the battery holder.



**Figure 13. Removing the Real-Time Clock (RTC) Battery**

### To replace the RTC battery

1. Place the RTC battery over the battery holder. Ensure that the positive terminal (+) is facing up.
2. Using the plastic tweezer or the disassembly tool, press the battery into the battery holder until it is properly seated in its socket.
3. Follow the procedures to replace the:
  - Endo Assembly
  - Rear Housing
  - Front Housing
  - Battery
  - Battery Door

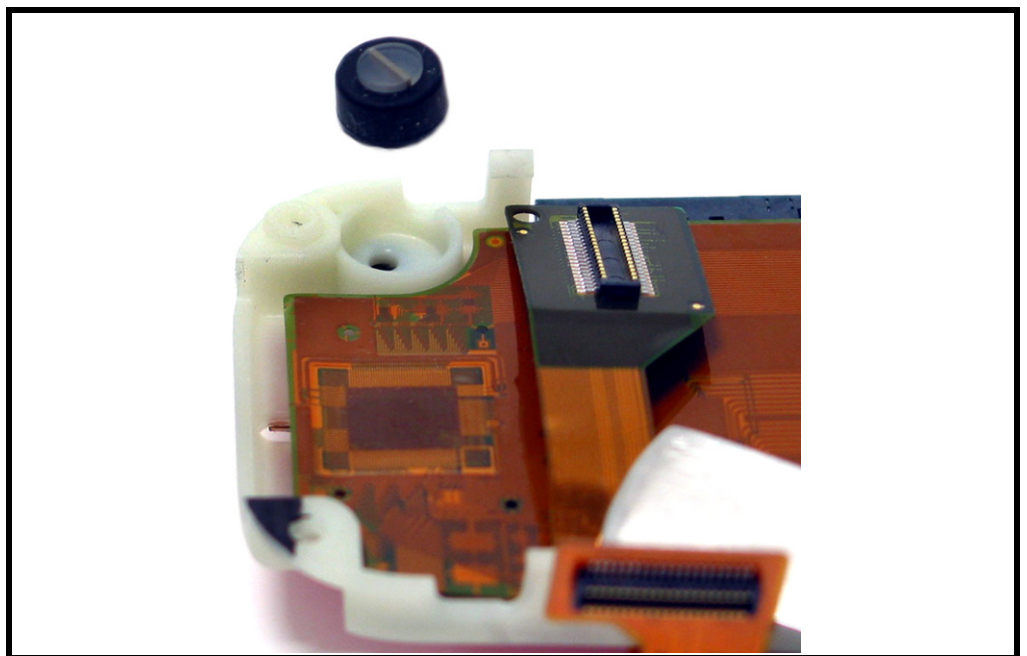


---

## Removing and Replacing the Microphone

### To remove the microphone

1. Follow the procedures to remove the:
  - Battery Door
  - Battery
  - Front Housing
  - Endo assembly
  - Rear Housing
2. Use the pointed end of the disassembly tool to gently pry the microphone from its socket in the shield spacer as shown in Figure 14. The microphone should come away easily.



0316710

**Figure 14. Removing the Microphone**

### To replace the microphone

1. Align the microphone with the hole in the shield spacer and gently press it in until fully seated.
2. Follow the procedures to replace the:
  - Rear Housing
  - Display Board
  - Front Housing
  - Battery

# UMTS Subscriber Identity Module (USIM) Identification Label

## USIM

A USIM is required to access the existing local GSM network, or remote networks when traveling (if a roaming agreement has been made with the provider).

The USIM card contains:

- All the data necessary to access GSM services
- The ability to store user information such as phone numbers
- All information required by the network provider to provide access to the network

## Identification

Each Motorola GSM phone is labeled with a variety of identifying numbers. The following section describes the current identifying labels.

### Mechanical Serial Number (MSN)

The MSN is an individual unit identity number and remains with the unit throughout its life.

The MSN can be used to log and track a phone on Motorola's Service Center Database.

The MSN is divided into 4 sections as shown in Figure 15.

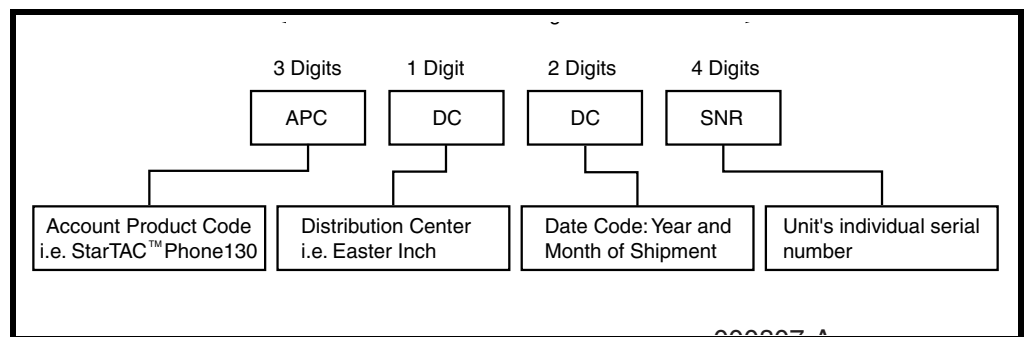


Figure 15. MSN Label Breakdown

000807a

### International Mobile Station Equipment Identity (IMEI)

The International Mobile station Equipment Identity (IMEI) number is an individual number unique to the PCB and is stored within the unit's memory.

The IMEI uniquely identifies an individual mobile station and thereby provides a means for controlling access to GSM networks based on mobile station types or individual units. The full IMEI structure is listed in Table 5.

**Table 5. IMEI Number Breakdown**

TAC	Serial Number	Check Digit
NNXXXX YY	ZZZZZZ	A

Where

- TAC** Type Allocation Code, formerly known as Type Approval Code
- NN** Reporting body identifier
- XXXX** Type Identifier
- YY** YY is set to 00 from 01/01/2003 until 31/03/2004
- ZZZZZZ** Individual unit serial number
- A** Phase 1 = 0.  
Phase 2 = check digit defined as a function of all other IMEI digits

Other label number configurations present are:

- **TRANSCEIVER NUMBER:** Identifies the product type. Normally the SWF number. (i.e. V100).
- **PACKAGE NUMBER:** Identifies the equipment type, mode, and language in which the product is shipped.

# Troubleshooting

## Troubleshooting Chart

**Table 6. PF 0B91 Telephone: Level 1 and 2 Troubleshooting Chart**

Symptom	Probable Cause	Verification And Remedy
1. Telephone will not turn on or stay on.	a) Battery either discharged or defective.	Measure battery voltage across a 50 ohm (>1 Watt) load. If the battery voltage is <3.25 Vdc, recharge the battery using the appropriate battery charger. If the battery will not recharge, replace the battery. If battery is not at fault, proceed to b.
	b) Battery terminals open or misaligned.	Visually inspect the battery terminals on both the battery and the telephone. Realign and, if necessary, either replace the battery or refer to a Level 3 Service Center for battery connector replacement. If battery terminals are not at fault, proceed to c.
	c) Transceiver board defective.	Remove the transceiver board assembly. Substitute a known good transceiver board and temporarily reassemble the unit. Press the PWR button; if unit turns on and stays on, disconnect the dc power source and reassemble the phone with the new transceiver board. Verify that the fault has been cleared.
2. Telephone exhibits poor reception or erratic operation such as calls frequently dropping or weak or distorted audio.	a) Antenna defective	Check connection between the antenna and the transceiver board. If the connection is OK, substitute a known good antenna. If the fault is still present, proceed to b.
	b) Transceiver board defective.	Replace the transceiver board (refer to 1c). Verify that the fault has been cleared and reassemble the unit with the new transceiver board.
3. Display is erratic, or provides partial or no display.	a) Mating connections to or from transceiver board faulty.	Check general condition of flex and flex connector. If the flex and connector are good, check that the display assembly mounting tabs are fully engaged. If connector is not at fault, proceed to b.
	b) Transceiver board defective.	Replace the transceiver board (refer to 1c). Verify that the fault has been cleared and reassemble the unit with the new transceiver board.
4. Incoming call alert transducer audio distorted or volume is too low.	Faulty transceiver board.	Replace the transceiver board (refer to 1c). Verify that the fault has been cleared and reassemble the unit with the new transceiver board.
5. Telephone transmit audio is weak. (usually indicated by called parties complaining of difficulty in hearing voice).	a) Microphone defective.	Replace the microphone as described in the procedures. If fault is not cleared, proceed to b.
	b) Transceiver board defective.	Replace the transceiver board (refer to 1c). Verify that the fault has been cleared and reassemble the unit with the new transceiver board.
6. Receive audio from earpiece speaker is weak or distorted.	a) Connections to or from transceiver board defective.	Check connection from the earpiece to the transceiver board. If connection is not at fault, proceed to b.

Table 6. PF 0B91 Telephone: Level 1 and 2 Troubleshooting Chart (Continued)

Symptom	Probable Cause	Verification And Remedy
	b) Earpiece speaker defective.	Temporarily replace the speaker with a known good speaker. Ensure good connection. Place a call and verify improvement in earpiece audio. If fault is cleared, reassemble the phone with the good transceiver board. If fault is not cleared, proceed to c.
	c) Transceiver board defective.	Replace the transceiver board (refer to 1c). Verify that the fault has been cleared and reassemble the phone with the new transceiver board.
7. Telephone will not recognize or accept USIM card.	a) USIM card defective.	Check the USIM card contacts for dirt. Clean if necessary, and check if fault has been cleared. If the contacts are clean, insert a known good USIM card into the telephone. Power up the unit and confirm that the card has been accepted. If the fault no longer exists, replace the defective USIM card. If the USIM card is not at fault, proceed to b.
	b) Transceiver board defective.	Replace the transceiver board (refer to 1c). Verify that the fault has been cleared and reassemble the phone with the new transceiver board.
8. Vibrator feature not functioning.	a) Vibrator defective.	Replace vibrator as described in the procedures. If the fault has not been cleared, proceed to b.
	b) Transceiver board defective.	Replace the transceiver board (refer to 1c). Verify that the fault has been cleared and reassemble the unit with the new transceiver board.
9. Internal Charger not working.	Faulty charger circuit on transceiver board.	Test a selection of batteries in the rear pocket of the desktop charger. Check LED display for the charging indications. If these are charging properly, then the internal charger is at fault. Replace the transceiver board assembly (refer to 1c). Verify that the fault has been cleared and reassemble the unit with the new transceiver board assembly.
10. No or weak audio when using headset.	a) Headset plug not pushed in fully.	Ensure the headset plug is fully seated in the jack.
	b) Faulty jack on transceiver board.	Replace the transceiver board (refer to 1c). Verify that the fault has been cleared and reassemble the unit with the new transceiver board.

## Manual Test Mode

Motorola PF 0B91 telephones are designed with a manual test mode capability. This allows service personnel to verify functionality and troubleshoot by entering keypad commands.

To enter the manual test command mode, press the following from idle:

☰ 0\* 4 call 8 TUV 2 sec 6 mm 3 m \*

There must be no more than 2 seconds between each of the keys pressed in the sequence. This opens the Opcode entry display, where you can enter test commands in this format:

1. (Opcode) (\*) (Field)  
See "Manual Test Mode Commands" below.
2. Press OK (☰)  
If you enter only the opcode, the phone prompts you for field information. The phone displays the Test Command Response Code. See "Manual Test Mode Response Codes" on page 40.

To end the test command mode, press ☺.

*Note: The handset can only be suspended by executing the SUSPEND test command. The user can exit the feature and return to idle if the handset has not yet been suspended. Otherwise, exiting the feature will cause a restart.*

## Manual Test Mode Commands

Table 7. Level 2 3G Handset Test Commands

Opcode (Decimal)	Opcode Mnemonic	Key Entry Format	Description	Field	Field Value
0	AUD_TN_LST	0 * <Action> * <Tone Identifier> OK	Generate/disable predefined tone	Field 1	0 = start atone
					1 = stop a tone
				Field 2	0-9 = DTMF tones
3	AUD_CTRL	3 * <Device/Process> * <Action> OK	Control various audio functions; enable/disable vibrator	Field 1	0 = Vibrator
					2 = Echo canceling
					3 = Noise suppressor
				Field 2	0 = Disable
					1 = Enable

Table 7. Level 2 3G Handset Test Commands (Continued)

Opcode (Decimal)	Opcode Mnemonic	Key Entry Format	Description	Field	Field Value
4	AUD_LPB	4 * <Loopback Type> * <Action>OK	Enable audio loopback	Field 1	0 = PCAP loopback
					6 = CODEC loopback
					7 = VOCODER (speech) loopback
				Field 2	0 = Disable Audio loopback
					1 = Enable Audio loopback
				Field 3	This field is valid only for VOCODER loopback
					0 = AMR 4.75
					1 = AMR 5.15
					2 = AMR 5.90
					3 = AMR 6.70
					4 = AMR 7.40
					5 = AMR 7.95
					6 = AMR 10.20
					7 = AMR 12.20
	8 = Full Rate				
	16 = Enhanced Full Rate				
	32 = Half Rate				
5	AUD_LVL	5 * <Get/Set> * <Volume>OK	Set audio level	Field 1	0 = Set the volume specified
				Field 2	0 = lowest, 7 = loudest
6	AUD_PATH	6 * <Input Path> * <Output Path> * <RX Mute> * <TX Mute>OK	Change audio path	Field 1	0 = As is.
					1 = Mute input path
					2 = Internal (handset) mic
					3 = Ext audio input (CE Bus)
					4 = Boom (headset) mic
					5 = Ext digital audio (USB)
					7 = Bluetooth time slot 1 audio input
					8 = Bluetooth time slot 2 audio input
					9 = Bluetooth time slot 3 audio input
				Field 2	0 = As is
					1 = Mute output path
					2 = Internal (handset) Speaker
					3 = Alert
					4 = Ext audio output (CE Bus)
	5 = Speakerphone				
	6 = Boom (headset) speaker				
34	RESTART	34 * OK	Generate a software restart	Field 1	As is
54	SUSPEND	54 OK	Terminate normal mode and enter test mode	Field 1	As is

**Table 7. Level 2 3G Handset Test Commands (Continued)**

Opcode (Decimal)	Opcode Mnemonic	Key Entry Format	Description	Field	Field Value
57	VERSION	57 *<version Type>OK	Retrieve SW version information	Field 1	016000 = DSP Version
					017000 = User (login) of process that created this file
					017001 = Build time (universal) in ISO-8601 format
					017002 = Clearcase view tag name
					017003 = Product base label from Clearcase config spec
					017004 = Product ID
					017005 = Version Number
					017006 = Build commentary
					018000 = Flash Booter version number (P2K Booter Only)

## Manual Test Mode Response Codes

**Table 8. Level 2 3G Handset Test Command Response Codes**

Opcode (Decimal)	Field Value
0	parse error (no data follows): invalid data length for command
1	parse error (no data follows): inadequate security level for command/parameter
2	parser error (no data follows): command/parameter not supported for current protocol (CDMA, GSM, TDMA)
3	parse error (no data follows): command/parameter not supported for current mode (normal, test mode, handset test mode)
4	parse error (no data follows): unsupported/invalid opcode
5	parse error (no data follows): unsupported/invalid parameter for opcode
6	command response: generic success (no data follows)
7	command response: generic failure (no data follows)
8	command response: data follows
9	unsolicited/multiple response: data follows (sequence tag is 0)
10	error: couldn't allocate memory
11	error: internal task error
12	error: Test Command task timed out waiting for response from another SW component
13	CDMA: parse error (no data follows): command/parameter not supported for current sub-mode TDMA: command not supported in current Call Stack Test Mode
14	error: length specified in command header greater than length received by transport layer
15	error: irrecoverable error; phone state has been lost. Phone is being powered down



## Level 2 Troubleshooting Procedures

A fully charged battery is all that's needed to perform the procedures described in this section. For each test, enter the Manual Test Command Mode as described in "Manual Test Mode" on page 38, then enter the codes listed.

### Vibrator Test

1. **50ms** **4cm** (Suspend)
2. **3ms** **\*** **0+** **\*** **1.0** (Enable Vibrator)
3. **3ms** **\*** **0+** **\*** **0+** (Disable Vibrator)
4. Verify vibration function when enabled.

### Handset Mic/Speaker test

1. **50ms** **4cm** (Suspend)
2. **6ms** **\*** **2.5s** **\*** **2.5s** (Enable internal mic and handset speaker)
3. **4cm** **\*** **7ms** **\*** **1.0** **\*** **1.0** **6ms** (Enable VOCODER loopback at Enhanced Full Rate)
4. Speak into the handset mic and listen for undistorted speech in the handset speaker.

### Headset Mic/Speaker test

1. **50ms** **4cm** (Suspend)
2. **6ms** **\*** **4cm** **\*** **6ms** (Enable headset mic and headset speaker)
3. **4cm** **\*** **7ms** **\*** **1.0** **\*** **1.0** **6ms** (Enable VOCODER loopback at Enhanced Full Rate)
4. Speak into the headset mic and listen for undistorted speech in the headset speaker.

### Software Version Check

1. **50ms** **7ms** **\*** **0+** **1.0** **7ms** **0+** **0+** **50ms** (Read version number)
2. Returned data is read as follows: F1 (D): 80530002 which translates to SW Version 53.00.02

## Programming: Software Upgrade and Flexing

Contact your local technical support engineer for information about equipment and procedures for flashing and flexing.

## Part Number Charts

The following section provides a reference for the parts associated with A835 telephones.

### Related Publications

Motorola A835 Wireless Phone User Guide

6809468A81 (SJJN5396)

Motorola A835 Wireless Phone Reference Guide

6809471A86 (SJJN5590)

### Exploded View Parts List

Table 9. Parts List

Item	Motorola Part No.	Description
1	6188083N01	main lens
2	See Table 10	front housing complete with lens and buttons
3	3888143N01	keypad
4	3888146N01	joy stick cap
5	7286741P01	display assembly
6	1588121N01	front endo (complete with keypad mylar)
7	5089081L01	speaker earpiece
8	5085600J02	mic
9	--	Main PC Board
10	1588311N01	camera cap front
11	0188744N01	camera assembly
12	3288074N01	Acoustic seal
13	3988072N01	speaker elastomer conn for back endo
14	1588120N01	back endo (complete with speaker)
15	0388708L04	screws
16	3888138N01	smart button
17	6188160N01	IRDA lens
18	See Table 10	rear housing
19	3888137N01	volume button
20	SNN5639	battery
21	See Table 10	battery door
--	5088905N01	speaker (part of back endo)

You may use the following web link to order parts online (Password is required):

[https://wissc.motorola.com/wissc\\_root/main/BrowserOK.html](https://wissc.motorola.com/wissc_root/main/BrowserOK.html)

For information on ordering parts please contact EMEA at +49 461 803 2690.

### Exploded View Diagrams

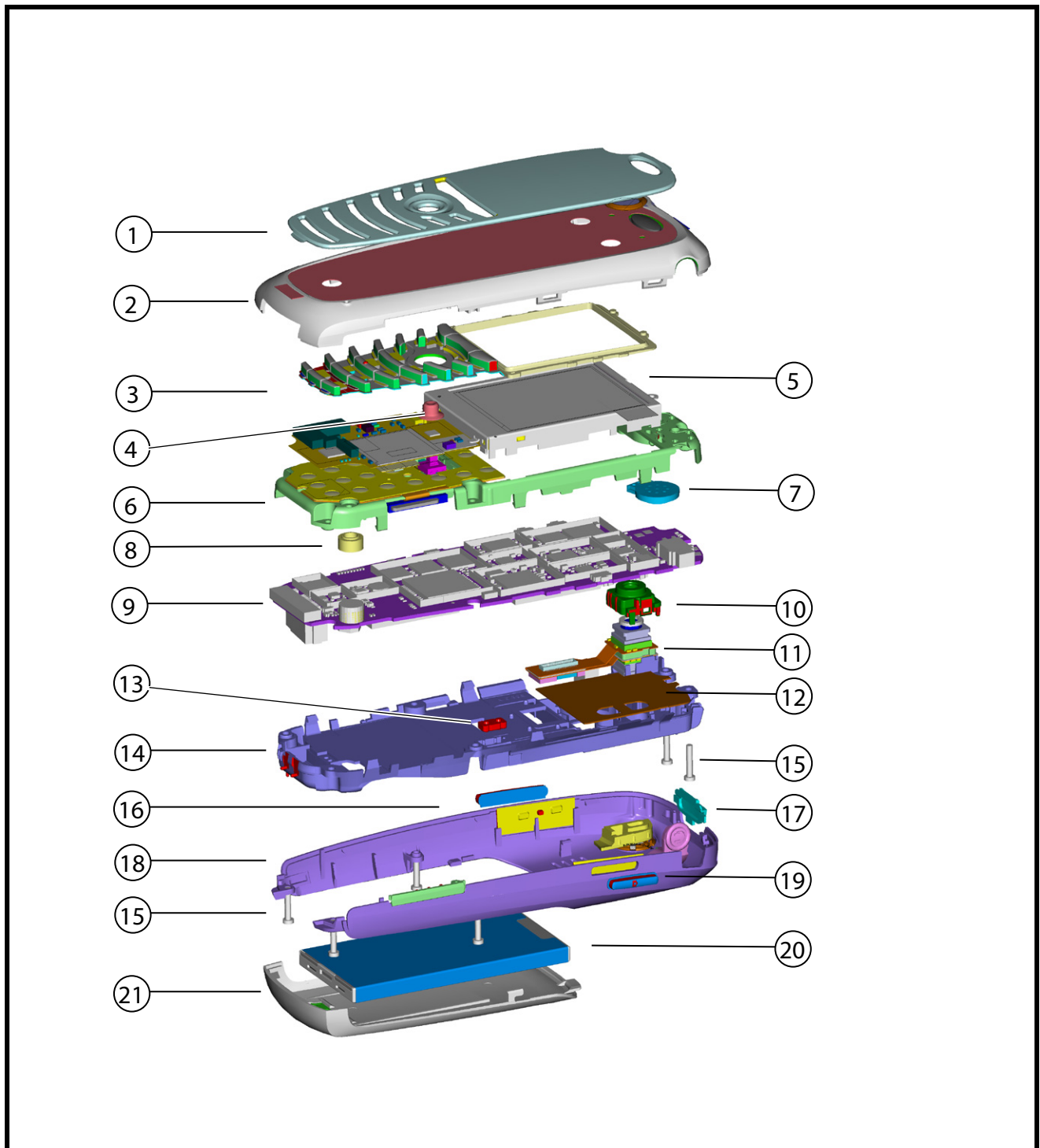


Figure 16. Exploded View Diagram (Siemens Model)

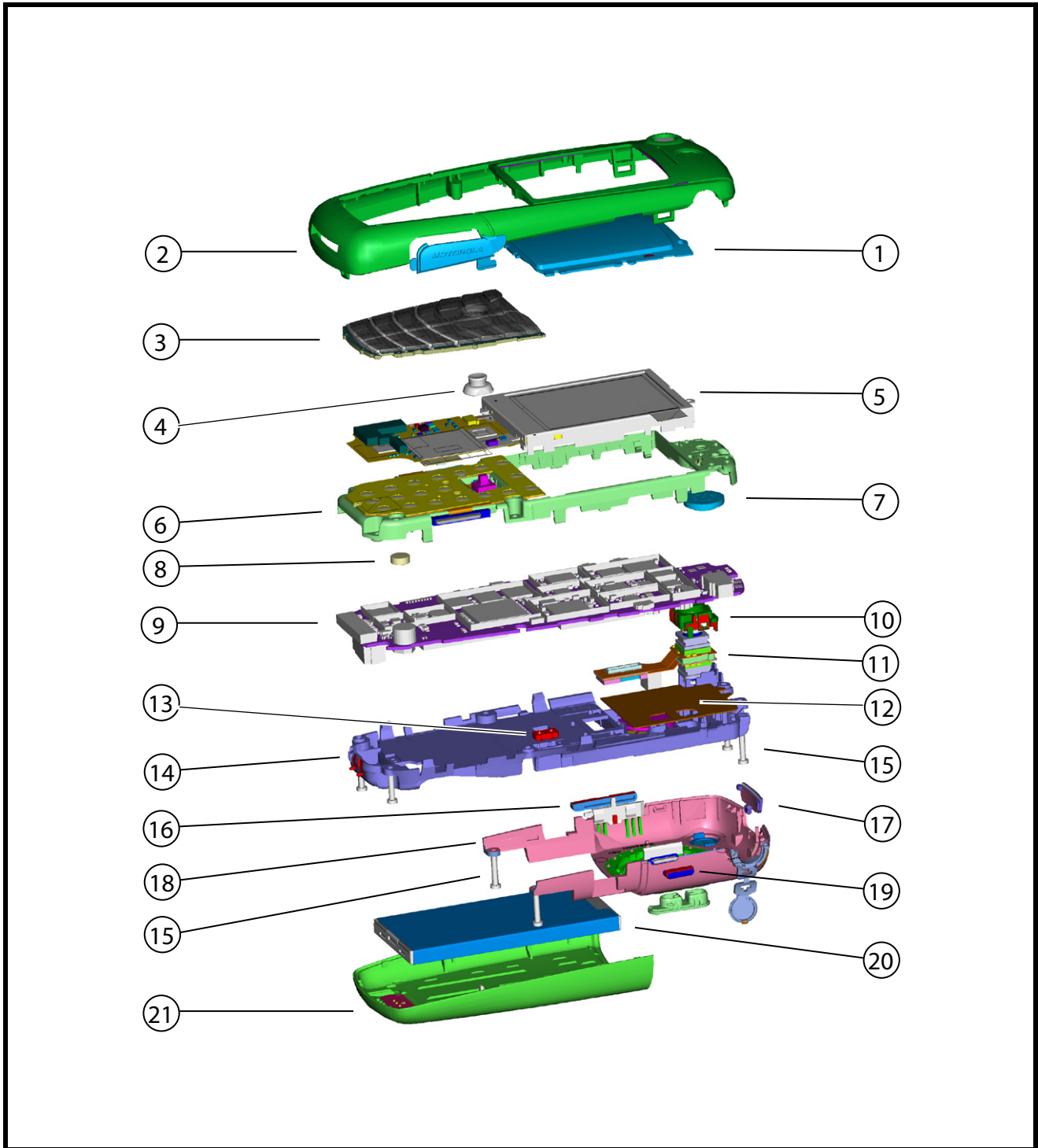


Figure 17. Exploded View Diagram (Motorola Model)

## Model Dependant Housing Part Numbers

**Table 10. Model Dependent Housing Part Numbers**

Item	Description	Part Number
2	Front Housing Assembly Motorola	1589270N01
2	Front Housing Assembly Siemens	1588133N02
18	Rear housing Assembly Motorola	1589242N01
18	Rear Housing Assembly Siemens	1588122N01
21	Battery door Motorola	SHN8426
21	Battery door Siemens	SHN8336

## Accessories

**Table 11. List of Accessories**

Description	Part Number
FreeCharge	U.S. Retail: 98418H-blue & 98419H-yellow
Travel Charger	SPN4940 (switchable mid rate)
VPA (Vehicle Power Adaptor)	SYN7818
Easy Install	SYN8597 (optional external mic SYN5708)
Pro Install Car Kit	S9609 or S9609+HUC (part number TBD)
Universal Customizable One Touch (Standard Monophonic Headset)	SYN9351
Bluetooth Headset	SYN9006
Retractable Headset	SYN9050
Mono Headset (new) Universal Customizable	SYN9350
Over-the-Ear Headset	SYN8908
Neckloop	SYN7875
Bluetooth PCMCIA Card	SYN8625

---

**Symbols**

28

**A**

accessories  
connector ports 12  
alert  
indicators 13  
alert settings 15

**B**

battery  
charge indicator 15  
function 15  
level indicator 13  
battery cover, removing and replacing 18  
battery, removing and replacing 18

**C**

changes  
product 5  
clock 12  
commands, manual test mode 38  
commands, response codes 40  
copyrights  
computer software 5  
cover plate, removing and replacing 34

**D**

disassembly 18  
display  
described ??-13  
illustration 12  
display assembly, removing and replacing 34

**E**

earpiece  
illustration 12  
end key  
functions 12  
exploded view diagram 43  
exploded view parts list 42

**F**

flashing and flexing 41

**H**

housing cover rear, removing and replacing 28

**I**

identification  
international mobile station equipment identity 35  
mechanical serial number 34  
product 5  
identification, labels 34  
IMEI 35  
indicators  
alert setting 13  
battery level 13  
menu 12  
message 13  
ring alert 13  
roam 13  
signal strength 13  
silent alert 13  
text entry 13  
vibrate alert 13  
Introduction 5

**K**

key  
end 12  
left soft key 12  
menu 12  
right soft key 12  
send 12  
keypad, removing and replacing 30

**L**

LCD 12  
left soft key  
functions 12  
liquid crystal display (LCD) 12  
loud ring alert 13

**M**

manual test mode 38  
menu indicator  
illustration 12  
menu key 12  
menu structure 14  
message indicator  
defined 13  
microphone 12, 33

---

MSN 34

**N**

names  
product 5

**O**

operation 12  
alert settings 15  
battery 15  
controls, indicators, and I/O connectors 12  
LCD 12  
menu navigation 14  
menu structure 14  
overview, product 10

**P**

parts  
exploded view diagram 43  
exploded view parts list 42  
replacement parts 42  
phone  
text entry indicator 13  
product  
changes 5  
identification 5  
names 5  
product overview 10  
publications, related 42

**R**

Real Time Clock Battery, removing and replacing 28  
regulatory agency compliance 5  
related publications 42  
removing  
battery 15, 18  
battery cover 18  
cover plate 34  
display assembly 34  
keypad 30  
microphone 33  
Real Time Clock Battery 28  
rear housing 28  
rear housing cover 28  
rtc battery 28  
transceiver board 20  
replacement parts  
ordering 7

replacing  
battery 18  
battery cover 18  
cover plate 34  
display assembly 34  
keypad 30  
microphone 33  
Real Time Clock Battery 28  
rear housing 28  
rear housing cover 28  
rtc battery 28  
transceiver board 20  
right soft key  
functions 12  
ring alert  
indicators 13  
ring and vibrate alert  
indicator 13  
roam indicator  
defined 13  
rtc battery, removing and replacing 28

**S**

send key 12  
serial number  
mechanical 34  
service manual  
about 6  
audience 6  
conventions 6  
revisions 7  
scope 6  
service policy 7  
customer support 7  
out of box failure 7  
product support 7  
shut down  
upon battery removal 15  
signal strength indicator  
defined 13  
silent alert indicator 13  
SIM 34  
soft keys  
illustration 12  
soft ring alert 13  
specifications 8  
subscriber identity module (SIM) 34  
support  
customer 7  
product 7

**T**

- test equipment 17
- text entry indicator
  - defined 13
- tools, disassembly 17
- transceiver board, removing and replacing 20
- troubleshooting
  - chart 36
  - manual test mode 38
  - manual test mode commands 38
  - procedures 41
  - test command response codes 40

**U**

- UMTS subscriber identity module (USIM) 34
- USIM 34

**V**

- vibrate alert
  - indicator 13

**W**

- warranty service 7





MOTOROLA, the Stylized M Logo, and all other trademarks indicated as such herein are trademarks of Motorola, Inc.

Truesync is a trademark of Starfish Software, Inc..

® Reg. U.S. Pat. & Tm. Off.

© 2003 Motorola, Inc.

All rights reserved.

Personal Communications Sector,  
789 International Parkway Room S2C  
Sunrise, FL 33325-6220



6809464A28-O